

# COMING SOON WHITFIELD PARK INDUSTRIAL CONDOS FOR SALE

February 2022

WHITFIELD PARK INDUSTRIAL CONDOS

2209 WHITFIELD PARK LOOP,  
SARASOTA, FL 34243







### **Purchase Summary**

Price per Unit:	\$268,500-373,500
Initial Deposit due on Contract:	20%
Additional Deposit due on Groundbreaking:	15%
Additional Deposit due on Roof Installation:	15%

### **Property Description**

BRAND NEW INDUSTRIAL CONDOS FOR SALE

Unit Size: Approx. 1,500sf each

41.50' Depth

12' x 14' Garage Doors

270sf Office/Showroom Space

Condominium Fees: Estimated at \$275/Month

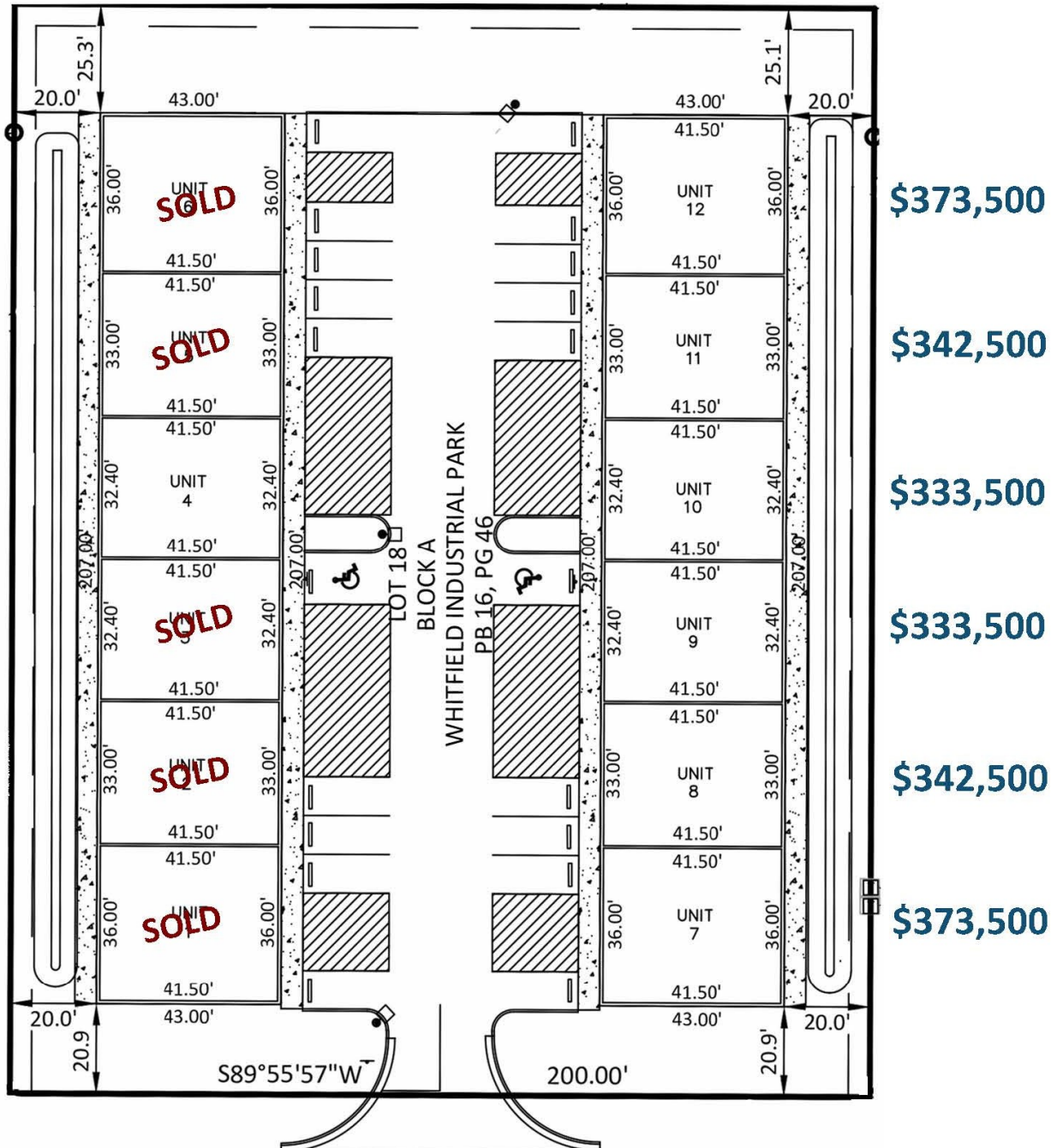
Zoning: LM

Estimated Occupancy: July 2022

### **Location Description**

Located in Whitfield Industrial Park right off 301 and Whitfield Avenue, less than 2 miles from Sarasota/Bradenton airport.

**\$268,500**



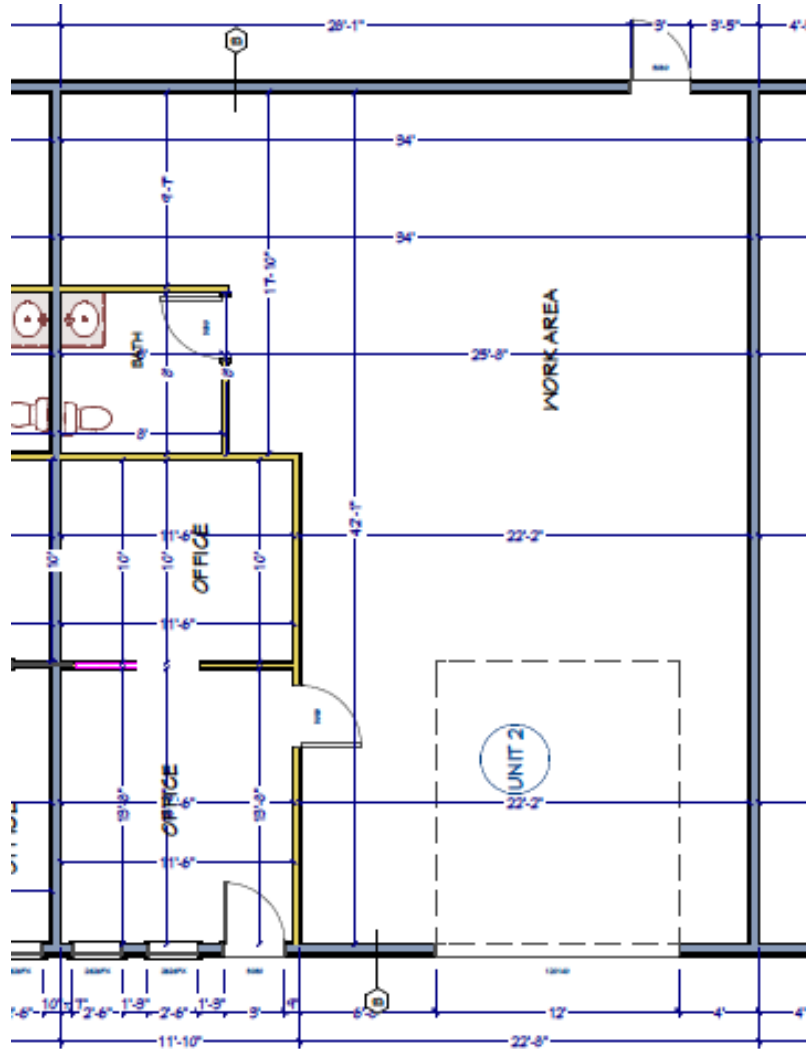


2209 Whitfield Park Loop  
Sarasota, FL 34243

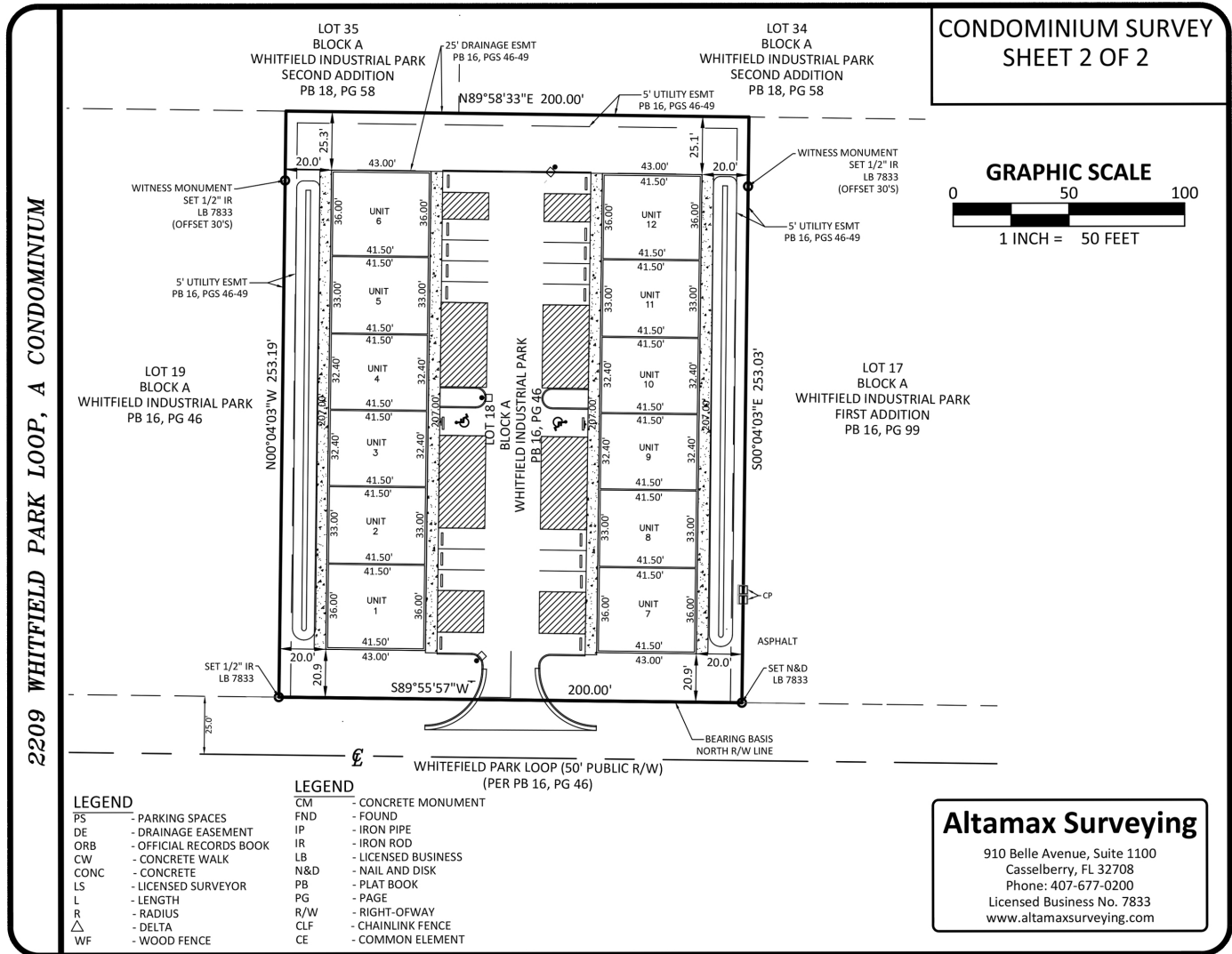
## PROPERTY PHOTOS













2209 Whitfield Park Loop  
Sarasota, FL 34243

LOCATION MAP

