

25 S COURT STREET

MONTGOMERY, AL 36104

Executive Summary



OFFERING SUMMARY

Available SF:

Lease Rate:

Lot Size:

Year Built:

Building Size:

Zoning:

Market:

Negotiable

0.17 Acres

1890

4,326

T-5 Smart Code

Downtown CBD

PROPERTY HIGHLIGHTS

- Centrally located, highly visible renovated office building
- Skylights throughout the building
- Use of in place office furniture, equipment and appliances included in lease
- Second parcel containing 18 exclusively available parking spaces
- 600+ Residential Units existing and more in development, 893 Hotel Rooms in Downtown, 2 New Boutique Hotels in Development
- 4,000± Students enrolled at Troy University Montgomery within 5 Blocks
- 0.6± Miles from Alabama State Capital
- 1.5± Miles from I-85/I-65
- 2.5± Miles from Maxwell Air Force Base: Serving 25,000 Active Duty, Guard, Reserves, Contractors, and Retirees. The Air Force University is attended by over 20,000 annually

GENE CODY, CCIM

334.386.2441
gcody@mcrmpm.com

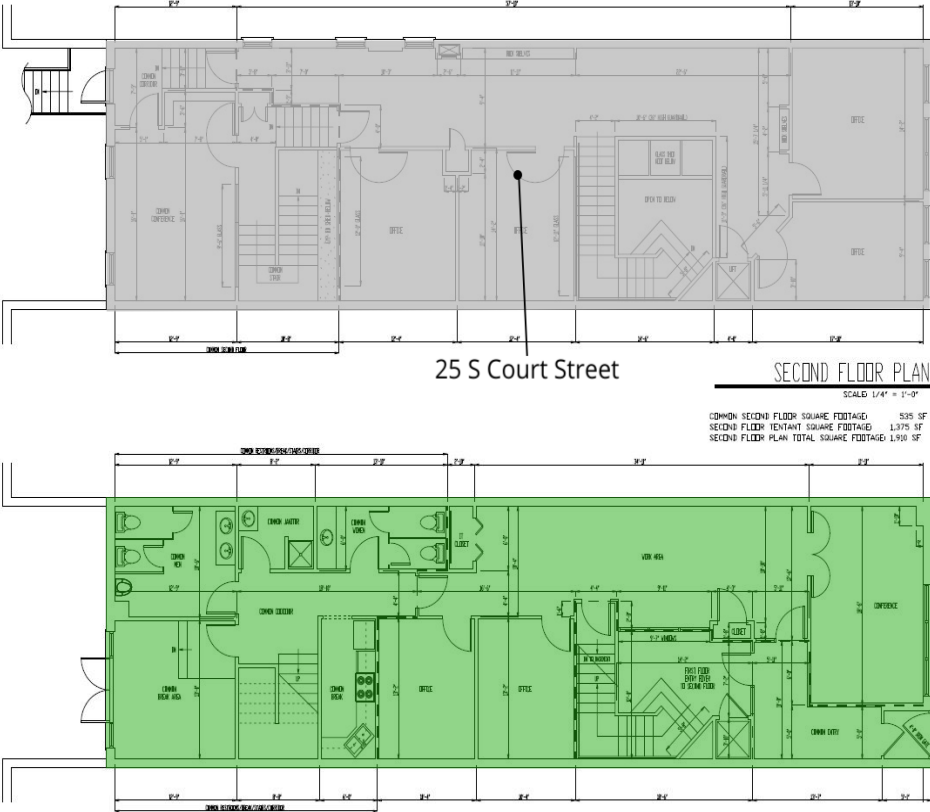
MOORE COMPANY REALTY

312 Catoma St #200, Montgomery, AL 36104
334.262.1958 | moorecompanyrealty.com



25 S COURT STREET
MONTGOMERY, AL 36104

Plans



AVAILABLE SPACES

SUITE	TENANT	SIZE	TYPE	RATE
25 S Court Street	-	4,326 SF	Modified Net	\$14.00 SF/yr

GENE CODY, CCIM
334.386.2441
gcody@mcrrmpm.com

MOORE COMPANY REALTY
312 Catoma St #200, Montgomery, AL 36104
334.262.1958 | moorecompanyrealty.com



25 S COURT STREET

MONTGOMERY, AL 36104

Additional Photos



GENE CODY, CCIM

334.386.2441
gcody@mcrmpm.com

MOORE COMPANY REALTY

312 Catoma St #200, Montgomery, AL 36104
334.262.1958 | moorecompanyrealty.com



25 S COURT STREET

MONTGOMERY, AL 36104

Retail Map



GENE CODY, CCIM

334.386.2441
gcody@mcrmpm.com

MOORE COMPANY REALTY

312 Catoma St #200, Montgomery, AL 36104
334.262.1958 | moorecompanyrealty.com

