

JAMESON.

FOR LEASE

RETAIL / OFFICE

440 West Diversey Parkway
Chicago, IL 60614

Inquire for pricing

Robert Jay Friedman
Vice President, Sales & Leasing
312.810.7203
rjfsite@jameson.com

JAMESONCOMMERCIAL.COM

©Jameson Real Estate LLC. All information provided herein is from sources deemed reliable. No representation is made as to the accuracy thereof & it is submitted subject to errors, omissions, changes, prior sale or lease, or withdrawal without notice. Projections, opinions, assumptions & estimates are presented as examples only & may not represent actual performance. Consult tax & legal advisors to perform your own investigation.



JAMESON.



LEASE OVERVIEW

LEASE PRICE: Inquire for pricing

STORE SIZE: 1,400 SF

YEAR BUILT: 1948

ZONING: B-3-5

MARKET: Lincoln Park

CROSS STREETS: Diversey Parkway & Pine Grove

PROPERTY DESCRIPTION

1,400 sf of top of the line build out

PROPERTY HIGHLIGHTS

- Last available space on Diversey

AREA AND TRANSPORTATION HIGHLIGHTS

- Multiple bus routes
- Heavy pedestrian traffic
- Multiple Divvy Bike stands
- Plenty of metered street parking
- Walk to Lakefront & Lincoln Park Zoo

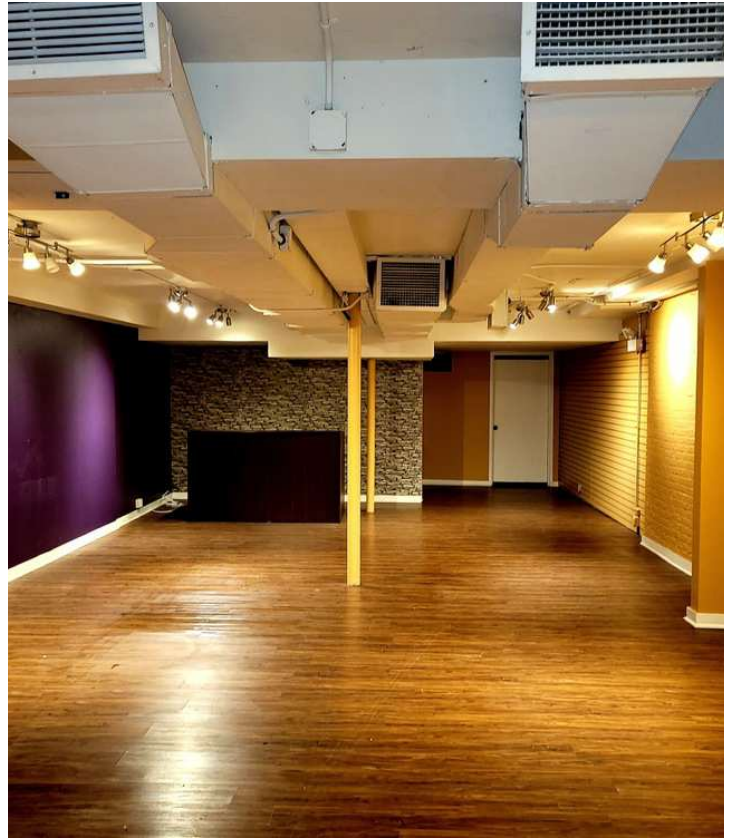
AREA TENANTS

- Eastgate Liquor
- Chimpunks
- Yoke
- Go Grocer
- Diversey Tobacco
- Lux Skin Bar

JAMESON.

INTERIOR PHOTOS

440 West Diversey Parkway, Chicago, IL 60614



JAMESON.

INTERIOR PHOTOS

440 West Diversey Parkway, Chicago, IL 60614



JAMESON.

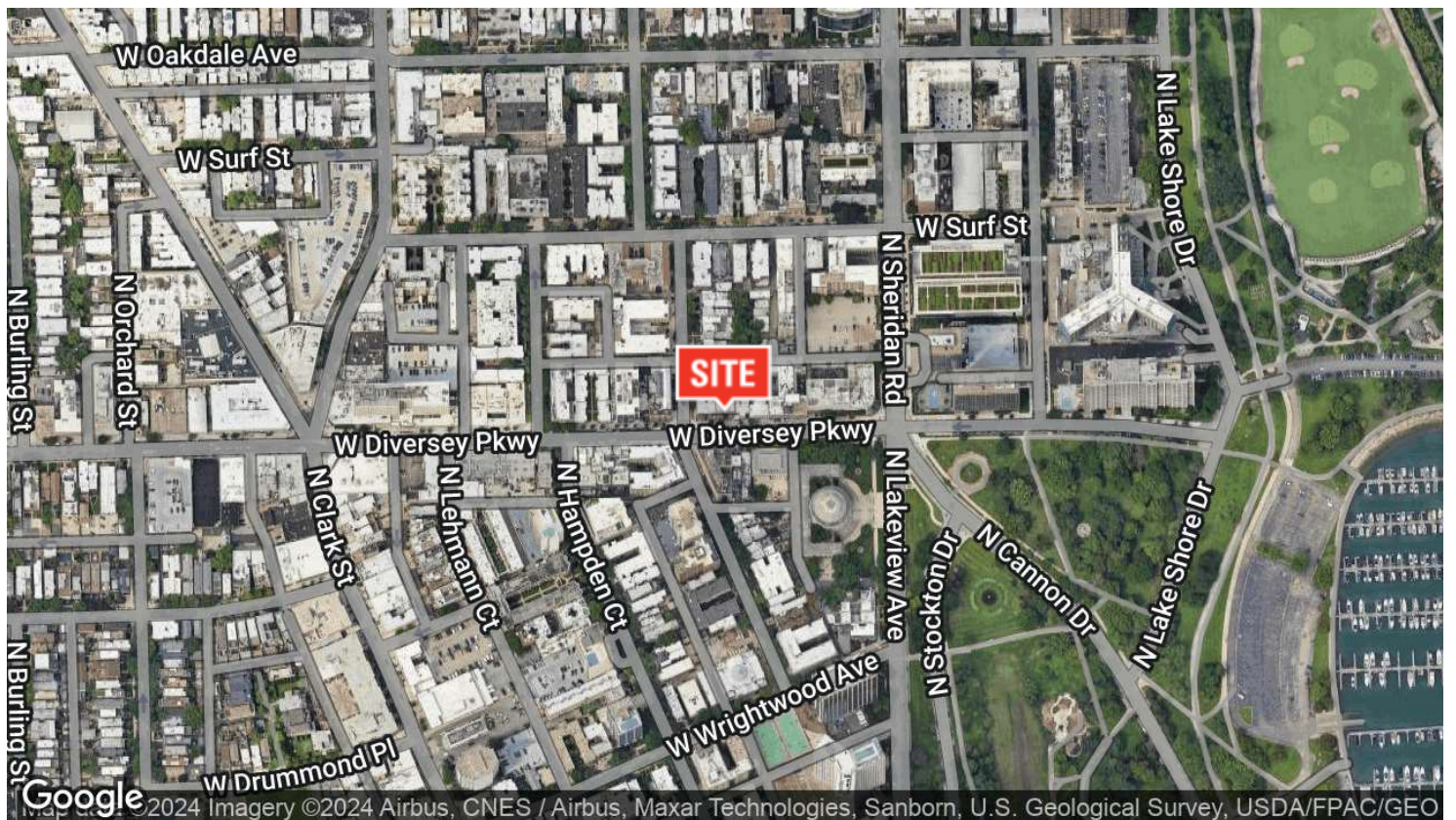
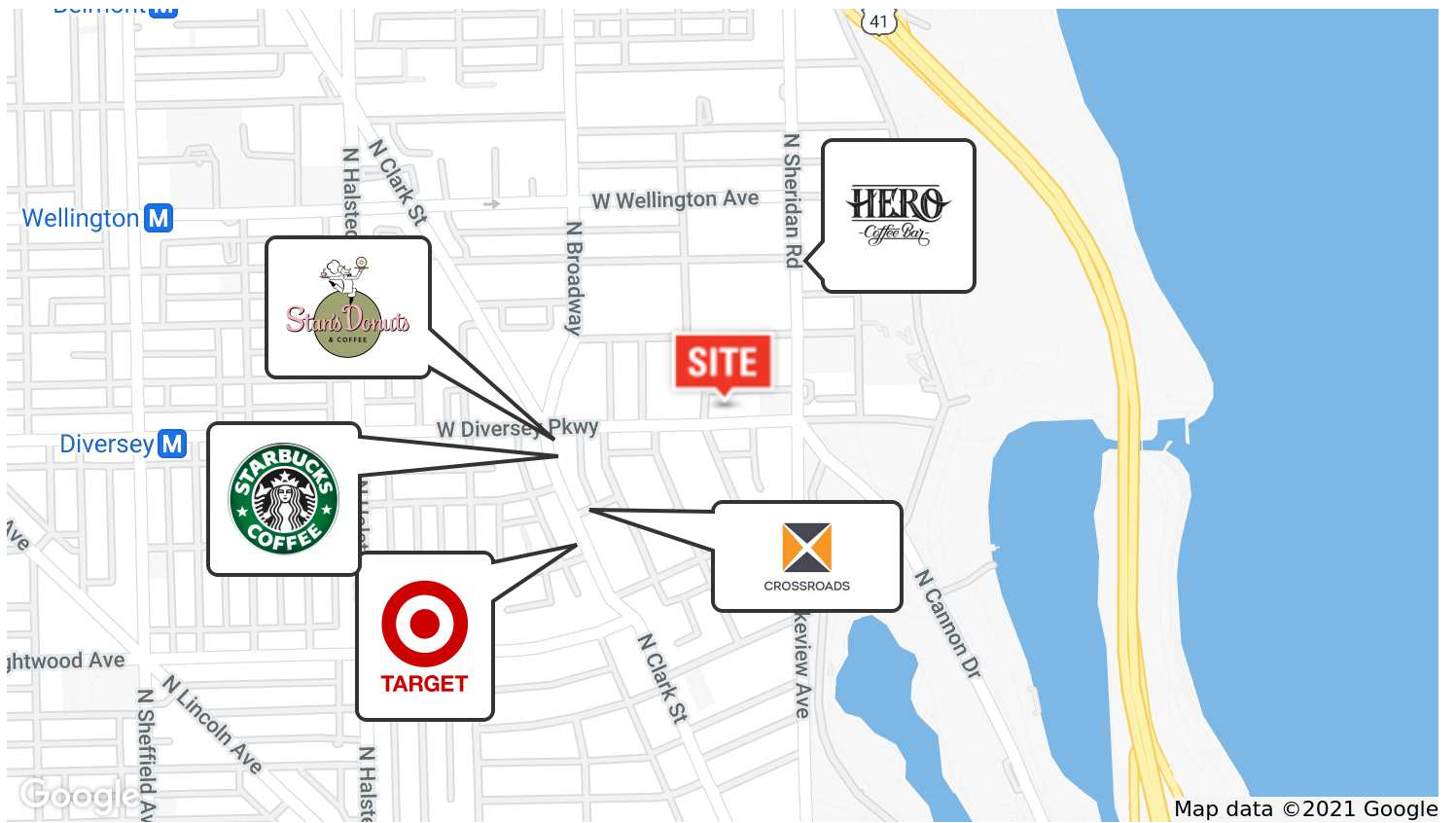
EXTERIOR PHOTOS

440 West Diversey Parkway, Chicago, IL 60614



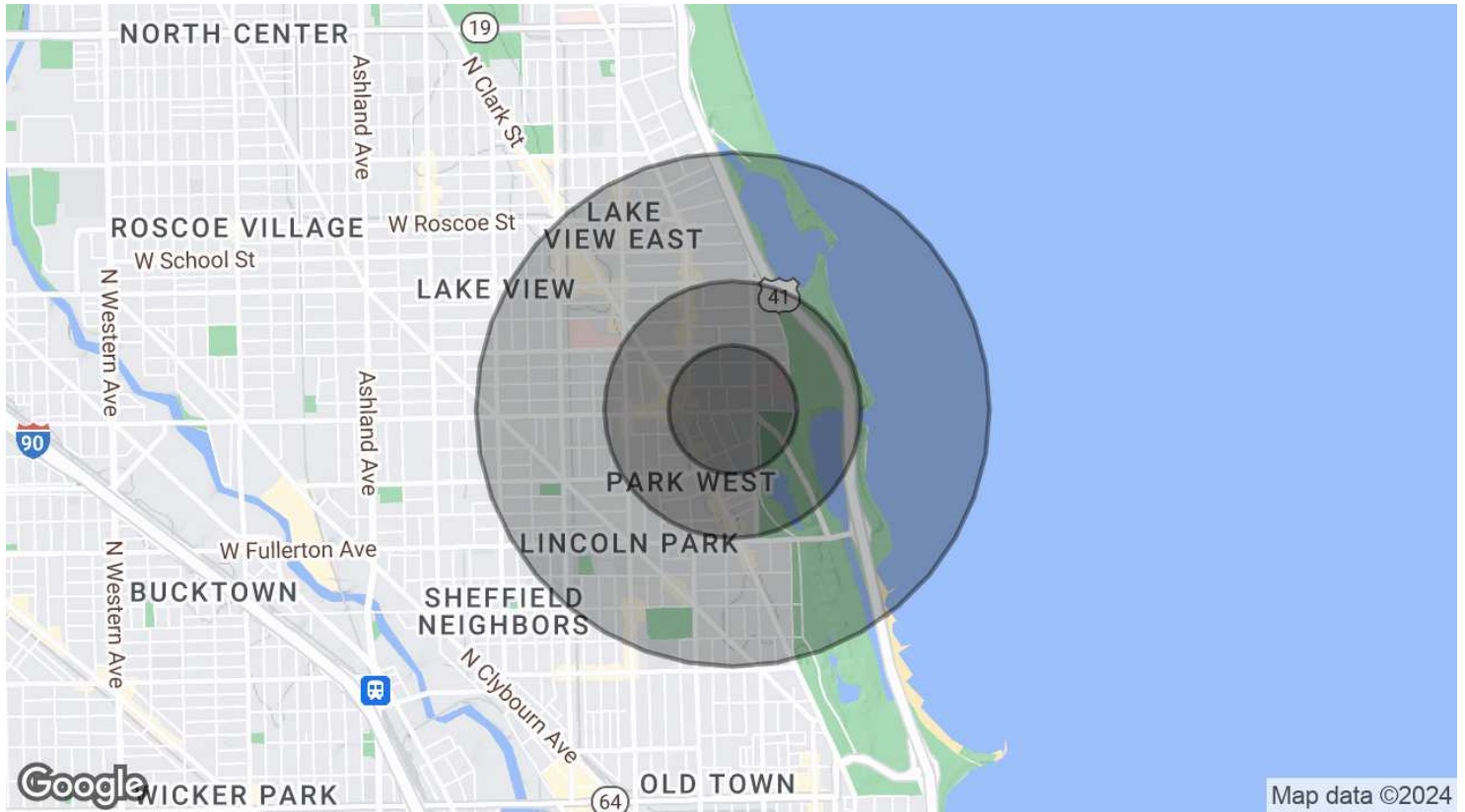
AERIAL & STREET DETAIL

440 West Diversey Parkway, Chicago, IL 60614



DEMOGRAPHICS MAP & REPORT

440 West Diversey Parkway, Chicago, IL 60614



POPULATION

	0.25 MILES	0.5 MILES	1 MILE
Total Population	10,178	24,836	69,301
Average Age	31.1	32.1	31.6
Average Age (Male)	34.2	33.9	32.9
Average Age (Female)	29.8	31.5	30.6

HOUSEHOLDS & INCOME

	0.25 MILES	0.5 MILES	1 MILE
Total Households	7,051	16,581	42,620
# of Persons per HH	1.4	1.5	1.6
Average HH Income	\$80,465	\$85,983	\$99,826
Average House Value		\$532,466	\$535,944

* Demographic data derived from 2020 ACS - US Census