

Downtown Ann Arbor Office Space

205 E. WASHINGTON STREET, ANN ARBOR, MI 48104



Swisher
COMMERCIAL

FOR LEASE



SUMMARY

Lease Rate:

\$28.00 SF/yr
Plus Utilities

Available SF:

Fully Leased

Zoning:

D1

PROPERTY OVERVIEW

Downtown Ann Arbor office space. Second floor furnished office with hardwood floors. Private entrance. Elevator or stair access. Mostly open floor plan with a kitchen and conference room. Private restroom in the suite.

Location provides for street and nearby municipal structure parking, nearby government buildings, and walkable amenities such as restaurants, entertainment, boutique shopping, fitness and specialty wellness businesses.

***Building
relationships.***

208 East Washington Street Ann Arbor, MI 48104

734.663.0501

Randy Maas

734.222.7525

RMAAS@SWISHERCOMMERCIAL.COM

Michael Giraud

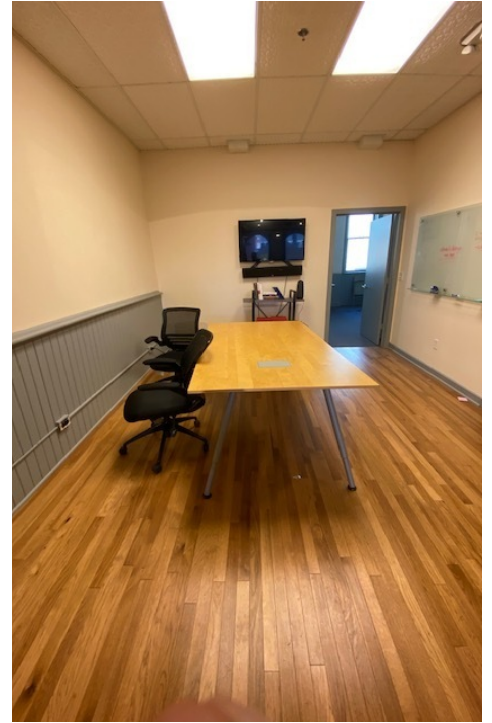
734.662.3617

MGIRAUD@SWISHERCOMMERCIAL.COM

SWISHERCOMMERCIAL.COM

Downtown Ann Arbor Office Space for Lease

205 E. WASHINGTON STREET, ANN ARBOR, MI 48104



***Building
relationships.***

208 East Washington Street Ann Arbor, MI 48104

734.663.0501

Randy Maas
Michael Giraud

734.222.7525
734.662.3617

RMAAS@SWISHERCOMMERCIAL.COM
MGIRAUD@SWISHERCOMMERCIAL.COM

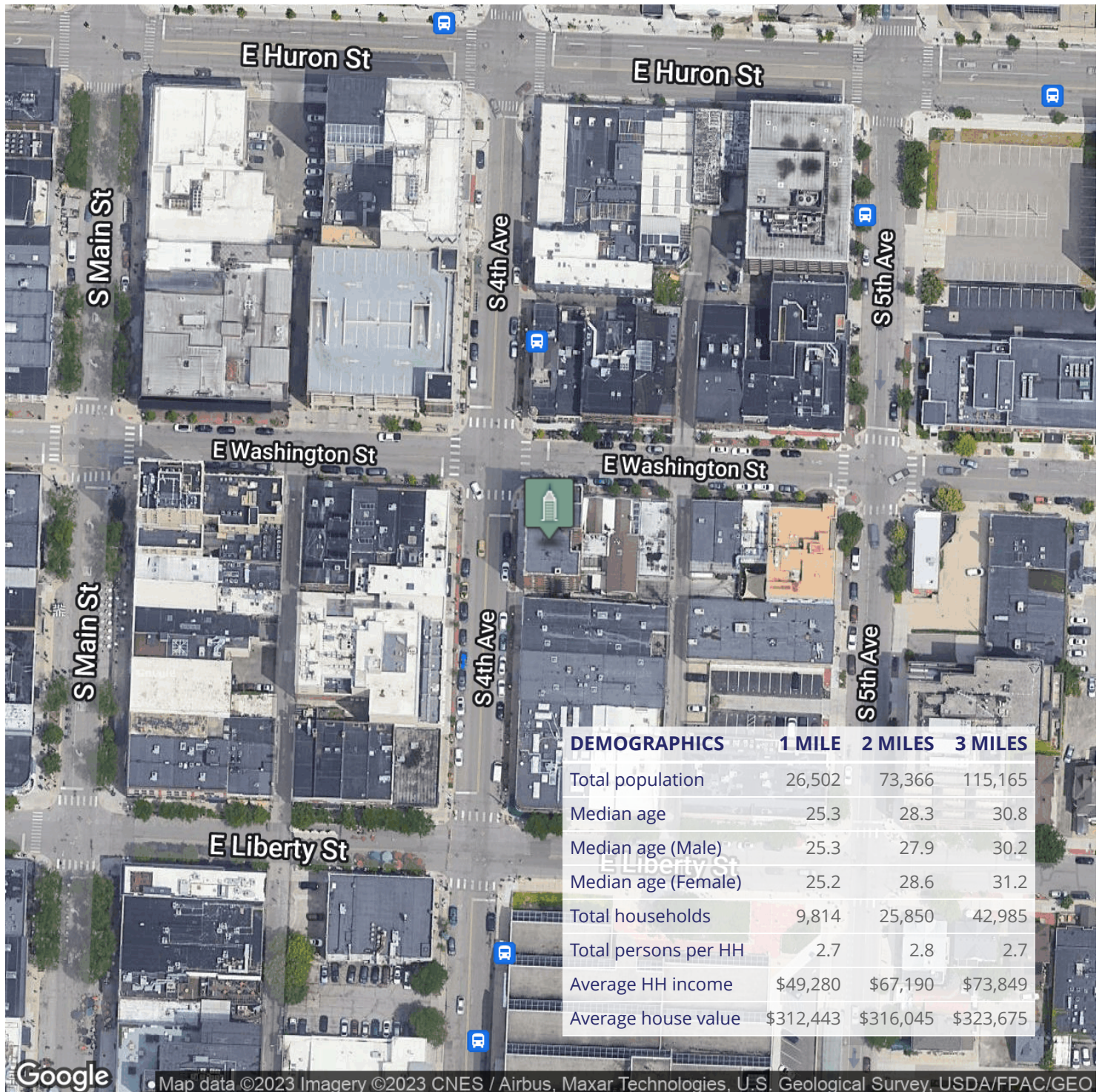
SWISHERCOMMERCIAL.COM

Downtown Ann Arbor Office Space for Lease

205 E. WASHINGTON STREET, ANN ARBOR, MI 48104



Swisher
COMMERCIAL



**Building
relationships.**

208 East Washington Street Ann Arbor, MI 48104

734.663.0501

Randy Maas

734.222.7525

RMAAS@SWISHERCOMMERCIAL.COM

Michael Giraud

734.662.3617

MGIRAUD@SWISHERCOMMERCIAL.COM

SWISHERCOMMERCIAL.COM