

**1,398 - 5,942 SF**

**OFFICE BUILDING; EXECUTIVE SUITES**



**FOR LEASE**



## Towne Square I

10 S. Main Street, Mount Clemens, Michigan 48043

### Property Highlights

- Central Business District (CBD)
- Walkable Downtown
- Professionally Managed Office Building
- 2018 Renovations
- \$24.00/PSF + Electric

### OFFERING SUMMARY

Lease Rate:	\$24/PSF Plus Electric
Available SF:	1,398 - 5,942 SF
Lot Size:	0.62 Acres
Building Size:	39,985 SF

DEMOGRAPHICS	1 MILE	3 MILES	5 MILES
Total Households	5,573	33,923	78,828
Total Population	12,387	78,040	192,873
Average HH Income	\$48,131	\$56,300	\$63,759



Commercial Real Estate Services, Worldwide.

[www.naifarbman.com](http://www.naifarbman.com)

**Wendy Acho**

Leasing and Sales Associate | 248.563.0739  
[acho@farbman.com](mailto:acho@farbman.com)

**Daniel McCleary**

Vice President | 248.351.4384  
[mccleary@farbman.com](mailto:mccleary@farbman.com)

NO WARRANTY, EXPRESS OR IMPLIED, IS MADE AS TO THE ACCURACY OF THE INFORMATION CONTAINED HEREIN. THIS INFORMATION IS SUBMITTED SUBJECT TO ERRORS, OMISSIONS, CHANGE OF PRICE, RENTAL OR OTHER CONDITIONS, WITHDRAWAL WITHOUT NOTICE, AND IS SUBJECT TO ANY SPECIAL LISTING CONDITIONS IMPOSED BY OUR PRINCIPALS, COOPERATING BROKERS, BUYERS, TENANTS AND OTHER PARTIES WHO RECEIVE THIS DOCUMENT SHOULD NOT RELY ON IT, BUT SHOULD USE IT AS A STARTING POINT OF ANALYSIS, AND SHOULD INDEPENDENTLY CONFIRM THE ACCURACY OF THE INFORMATION CONTAINED HEREIN THROUGH A DUE DILIGENCE REVIEW OF THE BOOKS, RECORDS, FILES AND DOCUMENTS THAT CONSTITUTE RELIABLE SOURCES OF THE INFORMATION DESCRIBED HEREIN. LOGOS ARE FOR IDENTIFICATION PURPOSES ONLY AND MAY BE TRADEMARKS OF THEIR RESPECTIVE COMPANIES. NAI Farbman, INC. CA BRE LIC. #01990696.



**1,398 - 5,942 SF**  
OFFICE BUILDING; EXECUTIVE SUITES



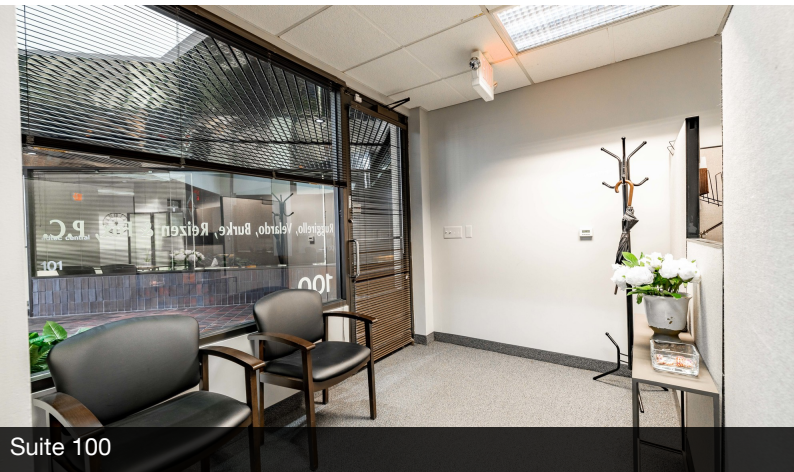
**FOR LEASE**



Suite 100



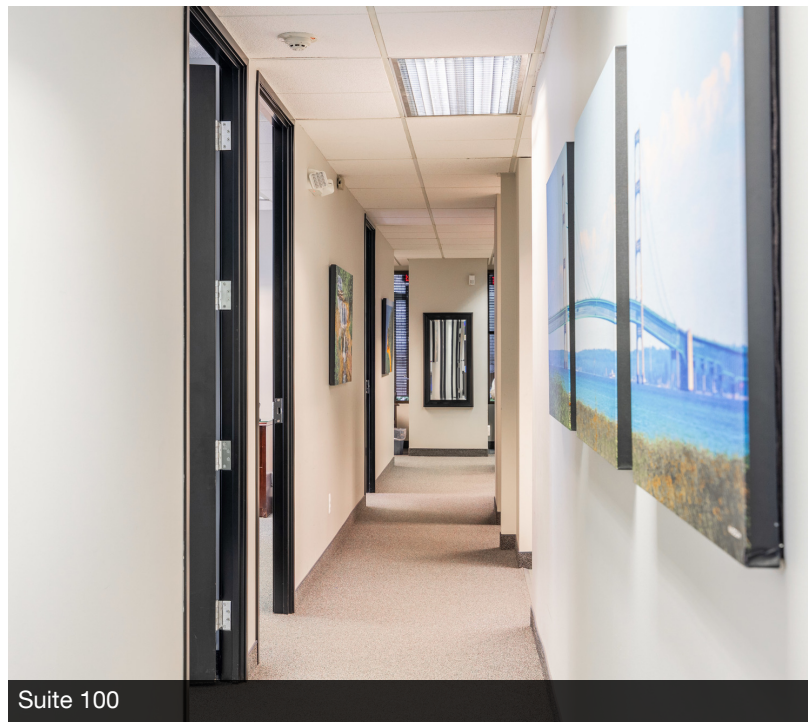
Suite 100



Suite 100



Suite 100



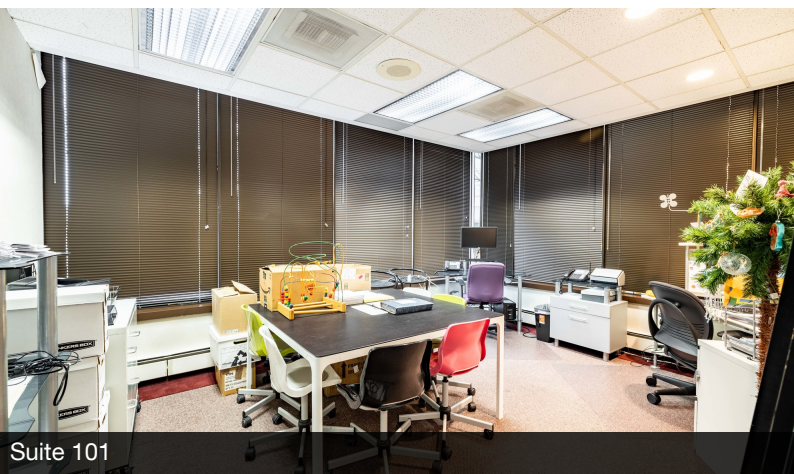
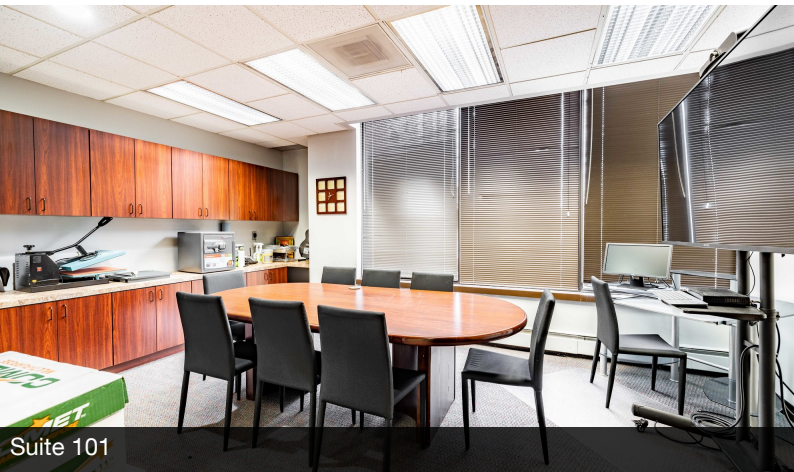
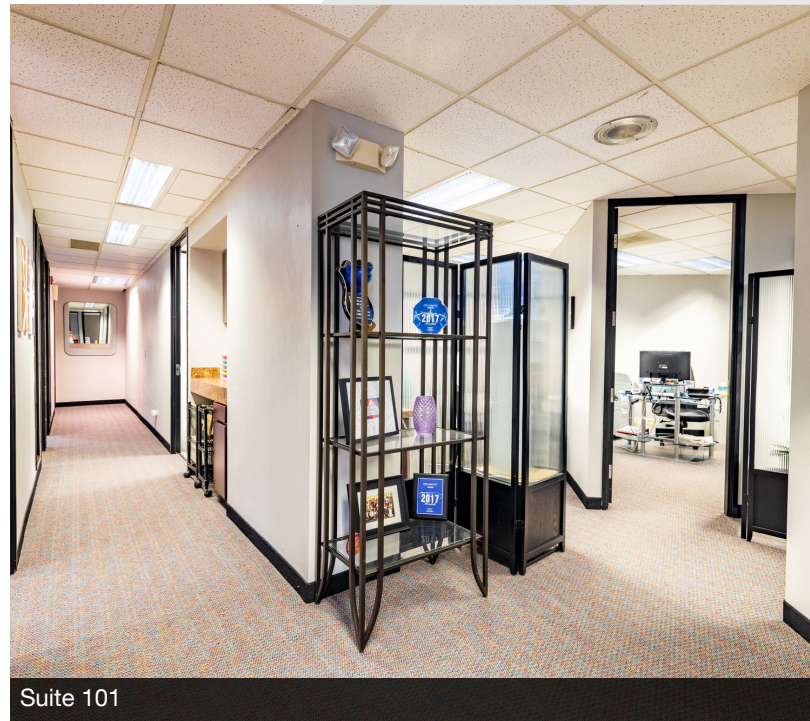
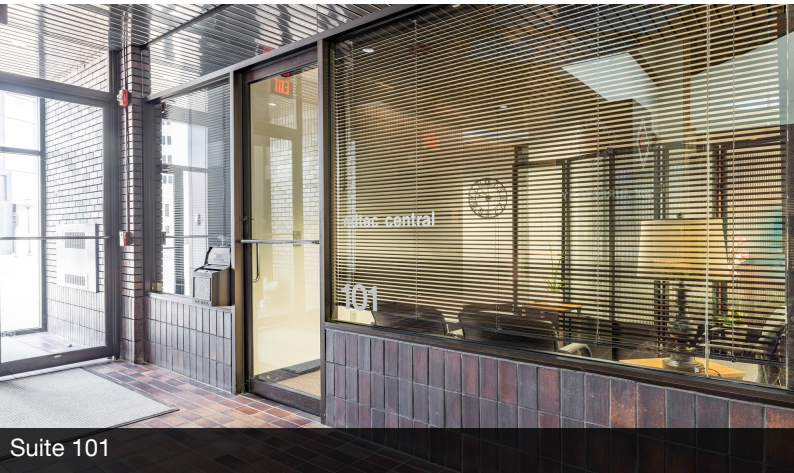
Suite 100



**1,398 - 5,942 SF**  
OFFICE BUILDING; EXECUTIVE SUITES



**FOR LEASE**





1,398 - 5,942 SF

OFFICE BUILDING; EXECUTIVE SUITES



FOR LEASE



**NAI Farbman**

Commercial Real Estate Services, Worldwide.

[www.naifarbman.com](http://www.naifarbman.com)

**Wendy Acho**

Leasing and Sales Associate | 248.563.0739  
[acho@farbman.com](mailto:acho@farbman.com)

**Daniel McCleary**

Vice President | 248.351.4384  
[mccleary@farbman.com](mailto:mccleary@farbman.com)

NO WARRANTY, EXPRESS OR IMPLIED, IS MADE AS TO THE ACCURACY OF THE INFORMATION CONTAINED HEREIN. THIS INFORMATION IS SUBMITTED SUBJECT TO ERRORS, OMISSIONS, CHANGE OF PRICE, RENTAL OR OTHER CONDITIONS, WITHDRAWAL WITHOUT NOTICE, AND IS SUBJECT TO ANY SPECIAL LISTING CONDITIONS IMPOSED BY OUR PRINCIPALS. COOPERATING BROKERS, BUYERS, TENANTS AND OTHER PARTIES WHO RECEIVE THIS DOCUMENT SHOULD NOT RELY ON IT, BUT SHOULD USE IT AS A STARTING POINT OF ANALYSIS, AND SHOULD INDEPENDENTLY CONFIRM THE ACCURACY OF THE INFORMATION CONTAINED HEREIN THROUGH A DUE DILIGENCE REVIEW OF THE BOOKS, RECORDS, FILES AND DOCUMENTS THAT CONSTITUTE RELIABLE SOURCES OF THE INFORMATION DESCRIBED HEREIN. LOGOS ARE FOR IDENTIFICATION PURPOSES ONLY AND MAY BE TRADEMARKS OF THEIR RESPECTIVE COMPANIES. NAI Farbman, INC. CA BRE LIC. #01990696.



# 1,398 - 5,942 SF OFFICE BUILDING; EXECUTIVE SUITES



## FOR LEASE



Suite 302



Suite 302



Suite 302



Suite 302



Suite 302



Suite 302



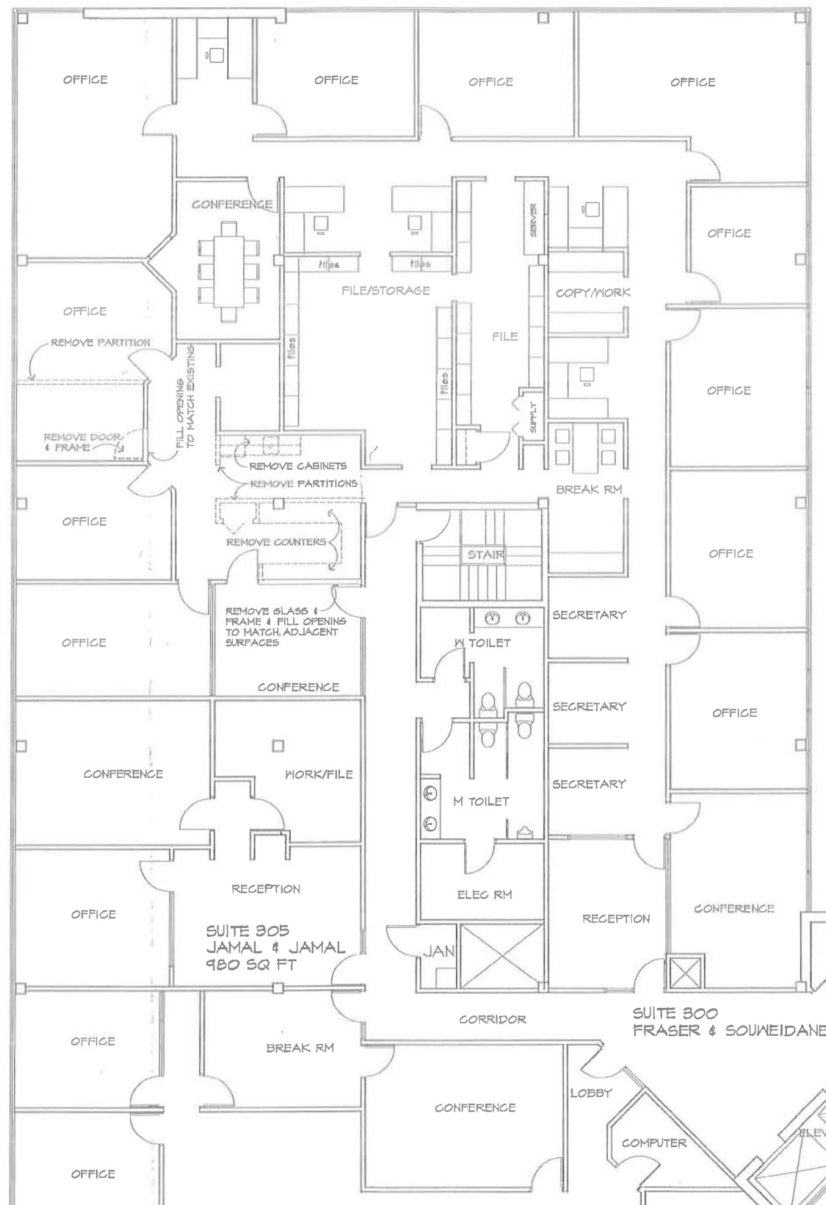
1,398 - 5,942 SF

OFFICE BUILDING; EXECUTIVE SUITES



FOR LEASE

Proposed Suite 300 Expansion



**NAI Farbman**

Commercial Real Estate Services, Worldwide.

[www.naifarbman.com](http://www.naifarbman.com)

**Wendy Acho**

Leasing and Sales Associate | 248.563.0739  
[acho@farbman.com](mailto:acho@farbman.com)

**Daniel McCleary**

Vice President | 248.351.4384  
[mccleary@farbman.com](mailto:mccleary@farbman.com)

NO WARRANTY, EXPRESS OR IMPLIED, IS MADE AS TO THE ACCURACY OF THE INFORMATION CONTAINED HEREIN. THIS INFORMATION IS SUBMITTED SUBJECT TO ERRORS, OMISSIONS, CHANGE OF PRICE, RENTAL OR OTHER CONDITIONS, WITHDRAWAL WITHOUT NOTICE, AND IS SUBJECT TO ANY SPECIAL LISTING CONDITIONS IMPOSED BY OUR PRINCIPALS. COOPERATING BROKERS, BUYERS, TENANTS AND OTHER PARTIES WHO RECEIVE THIS DOCUMENT SHOULD NOT RELY ON IT, BUT SHOULD USE IT AS A STARTING POINT OF ANALYSIS, AND SHOULD INDEPENDENTLY CONFIRM THE ACCURACY OF THE INFORMATION CONTAINED HEREIN THROUGH A DUE DILIGENCE REVIEW OF THE BOOKS, RECORDS, FILES AND DOCUMENTS THAT CONSTITUTE RELIABLE SOURCES OF THE INFORMATION DESCRIBED HEREIN. LOGOS ARE FOR IDENTIFICATION PURPOSES ONLY AND MAY BE TRADEMARKS OF THEIR RESPECTIVE COMPANIES. NAI Farbman, INC. CA BRE LIC. #01990696.

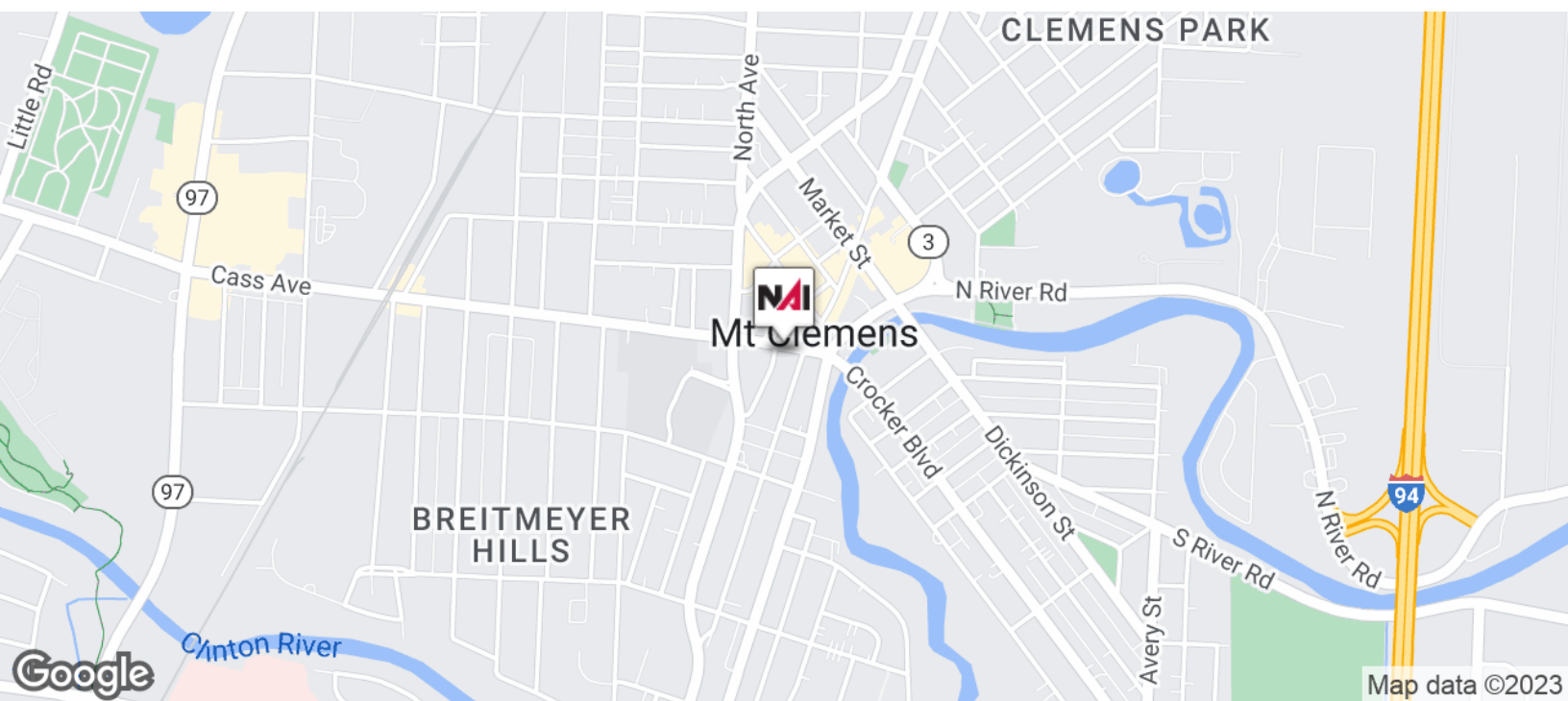
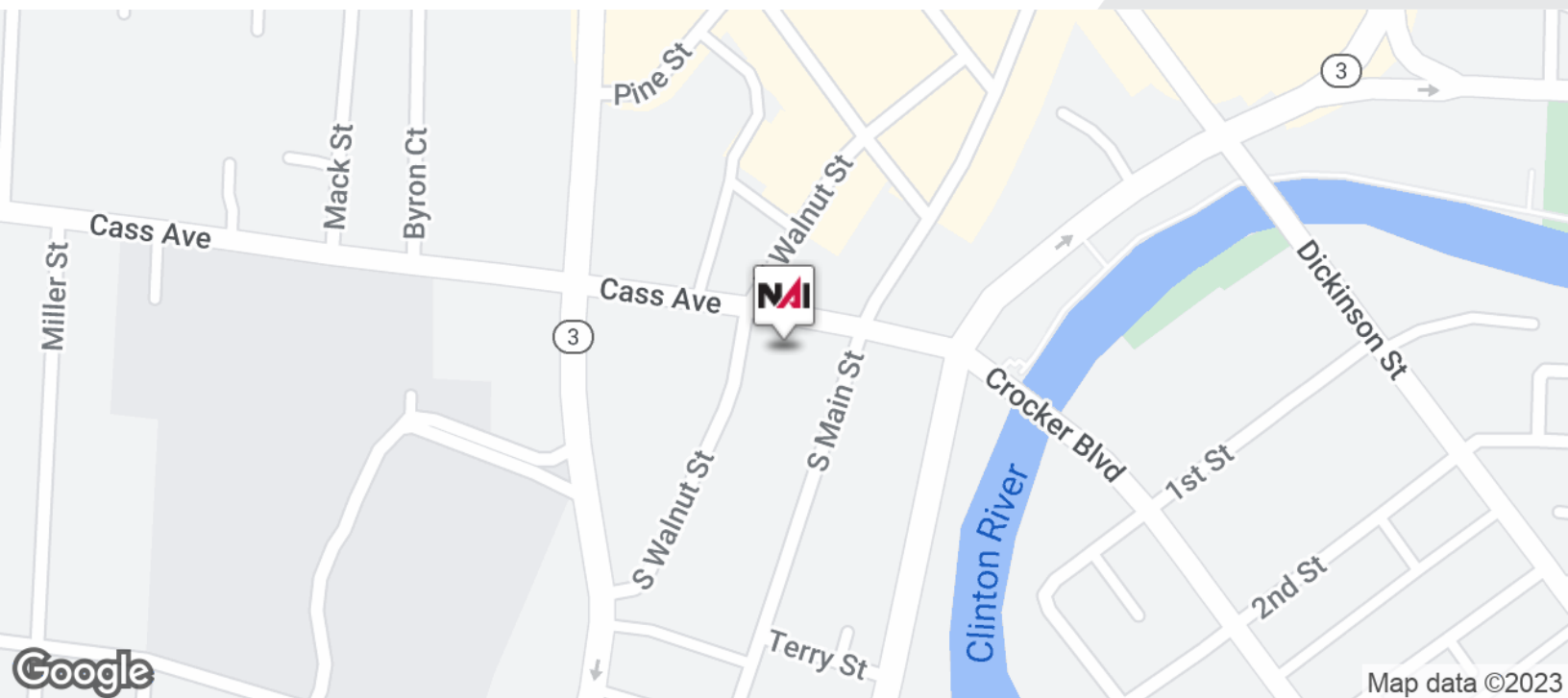


1,398 - 5,942 SF

OFFICE BUILDING; EXECUTIVE SUITES



**FOR LEASE**



Commercial Real Estate Services, Worldwide.

[www.naifarbman.com](http://www.naifarbman.com)

**Wendy Acho**

Leasing and Sales Associate | 248.563.0739  
[acho@farbman.com](mailto:acho@farbman.com)

**Daniel McCleary**

Vice President | 248.351.4384  
[mccleary@farbman.com](mailto:mccleary@farbman.com)

NO WARRANTY, EXPRESS OR IMPLIED, IS MADE AS TO THE ACCURACY OF THE INFORMATION CONTAINED HEREIN. THIS INFORMATION IS SUBMITTED SUBJECT TO ERRORS, OMISSIONS, CHANGE OF PRICE, RENTAL OR OTHER CONDITIONS, WITHDRAWAL WITHOUT NOTICE, AND IS SUBJECT TO ANY SPECIAL LISTING CONDITIONS IMPOSED BY OUR PRINCIPALS. COOPERATING BROKERS, BUYERS, TENANTS AND OTHER PARTIES WHO RECEIVE THIS DOCUMENT SHOULD NOT RELY ON IT, BUT SHOULD USE IT AS A STARTING POINT OF ANALYSIS, AND SHOULD INDEPENDENTLY CONFIRM THE ACCURACY OF THE INFORMATION CONTAINED HEREIN THROUGH A DUE DILIGENCE REVIEW OF THE BOOKS, RECORDS, FILES AND DOCUMENTS THAT CONSTITUTE RELIABLE SOURCES OF THE INFORMATION DESCRIBED HEREIN. LOGOS ARE FOR IDENTIFICATION PURPOSES ONLY AND MAY BE TRADEMARKS OF THEIR RESPECTIVE COMPANIES. NAI Farbman, INC. CA BRE LIC. #01990696.

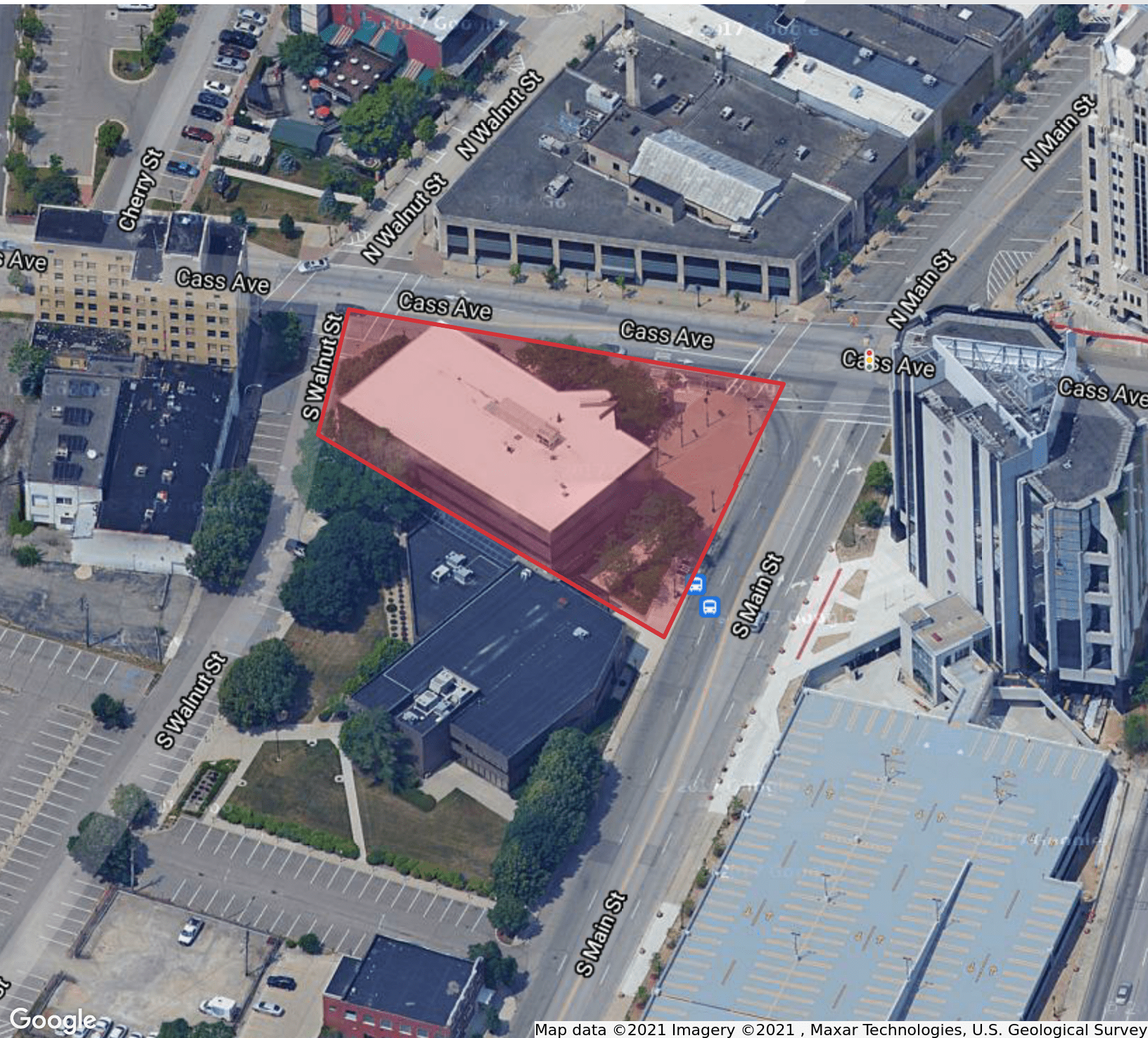


1,398 - 5,942 SF

OFFICE BUILDING; EXECUTIVE SUITES



**FOR LEASE**



Map data ©2021 Imagery ©2021 , Maxar Technologies, U.S. Geological Survey



Commercial Real Estate Services, Worldwide.

[www.naifarbman.com](http://www.naifarbman.com)

**Wendy Acho**

Leasing and Sales Associate | 248.563.0739  
[acho@farbman.com](mailto:acho@farbman.com)

**Daniel McCleary**

Vice President | 248.351.4384  
[mccleary@farbman.com](mailto:mccleary@farbman.com)

NO WARRANTY, EXPRESS OR IMPLIED, IS MADE AS TO THE ACCURACY OF THE INFORMATION CONTAINED HEREIN. THIS INFORMATION IS SUBMITTED SUBJECT TO ERRORS, OMISSIONS, CHANGE OF PRICE, RENTAL OR OTHER CONDITIONS, WITHDRAWAL WITHOUT NOTICE, AND IS SUBJECT TO ANY SPECIAL LISTING CONDITIONS IMPOSED BY OUR PRINCIPALS, COOPERATING BROKERS, BUYERS, TENANTS AND OTHER PARTIES WHO RECEIVE THIS DOCUMENT SHOULD NOT RELY ON IT, BUT SHOULD USE IT AS A STARTING POINT OF ANALYSIS, AND SHOULD INDEPENDENTLY CONFIRM THE ACCURACY OF THE INFORMATION CONTAINED HEREIN THROUGH A DUE DILIGENCE REVIEW OF THE BOOKS, RECORDS, FILES AND DOCUMENTS THAT CONSTITUTE RELIABLE SOURCES OF THE INFORMATION DESCRIBED HEREIN. LOGOS ARE FOR IDENTIFICATION PURPOSES ONLY AND MAY BE TRADEMARKS OF THEIR RESPECTIVE COMPANIES. NAI Farbman, INC. CA BRE LIC. #01990696.

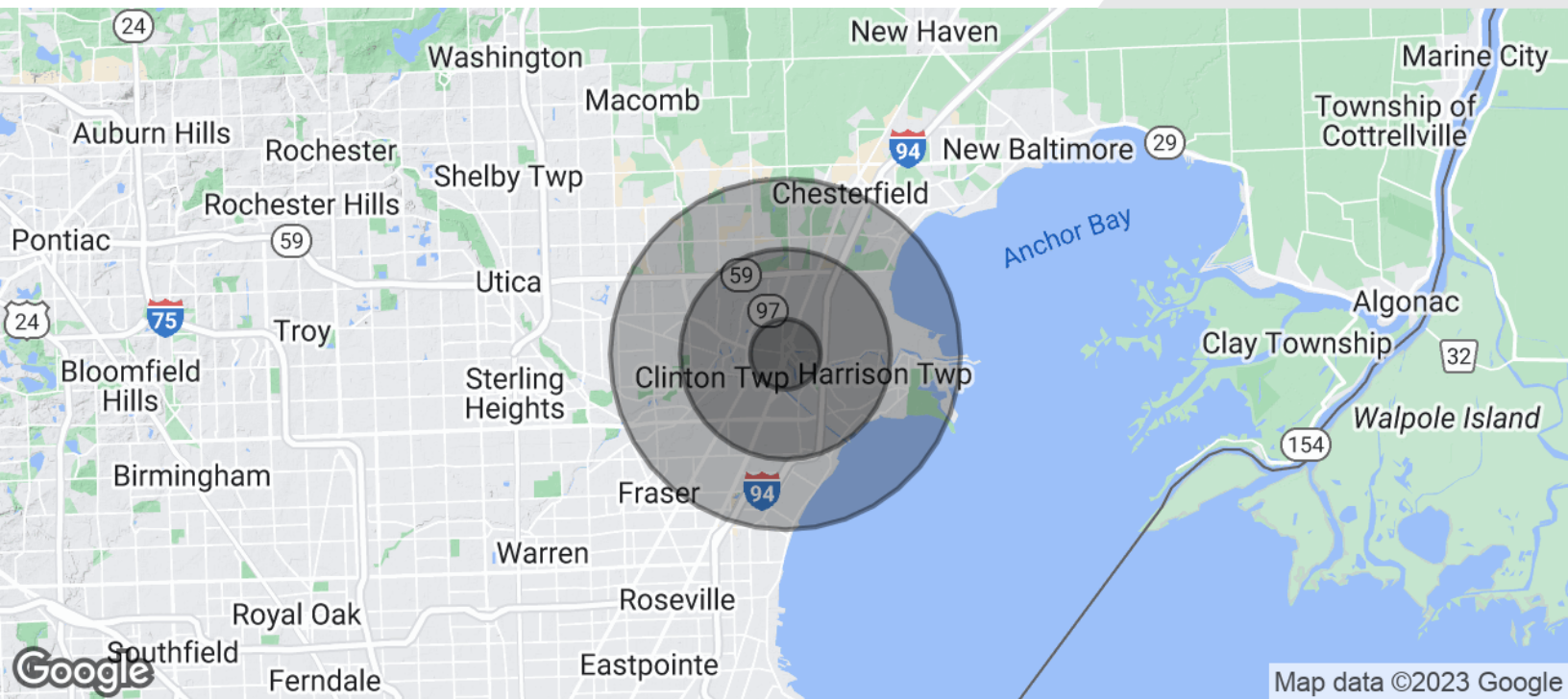


1,398 - 5,942 SF

OFFICE BUILDING; EXECUTIVE SUITES



FOR LEASE



#### POPULATION

	1 MILE	3 MILES	5 MILES
Total Population	12,387	78,040	192,873
Average Age	39.9	39.4	39.2
Average Age (Male)	39.5	37.8	37.8
Average Age (Female)	39.8	40.6	40.2

#### HOUSEHOLDS & INCOME

	1 MILE	3 MILES	5 MILES
Total Households	5,573	33,923	78,828
# of Persons per HH	2.2	2.3	2.4
Average HH Income	\$48,131	\$56,300	\$63,759
Average House Value	\$103,203	\$144,872	\$166,231

\* Demographic data derived from 2020 ACS - US Census



Commercial Real Estate Services, Worldwide.  
www.naifarbman.com

#### Wendy Acho

Leasing and Sales Associate | 248.563.0739  
acho@farbman.com

#### Daniel McCleary

Vice President | 248.351.4384  
mccleary@farbman.com

NO WARRANTY, EXPRESS OR IMPLIED, IS MADE AS TO THE ACCURACY OF THE INFORMATION CONTAINED HEREIN. THIS INFORMATION IS SUBMITTED SUBJECT TO ERRORS, OMISSIONS, CHANGE OF PRICE, RENTAL OR OTHER CONDITIONS, WITHDRAWAL WITHOUT NOTICE, AND IS SUBJECT TO ANY SPECIAL LISTING CONDITIONS IMPOSED BY OUR PRINCIPALS. COOPERATING BROKERS, BUYERS, TENANTS AND OTHER PARTIES WHO RECEIVE THIS DOCUMENT SHOULD NOT RELY ON IT, BUT SHOULD USE IT AS A STARTING POINT OF ANALYSIS, AND SHOULD INDEPENDENTLY CONFIRM THE ACCURACY OF THE INFORMATION CONTAINED HEREIN THROUGH A DUE DILIGENCE REVIEW OF THE BOOKS, RECORDS, FILES AND DOCUMENTS THAT CONSTITUTE RELIABLE SOURCES OF THE INFORMATION DESCRIBED HEREIN. LOGOS ARE FOR IDENTIFICATION PURPOSES ONLY AND MAY BE TRADEMARKS OF THEIR RESPECTIVE COMPANIES. NAI Farbman, INC. CA BRE LIC. #01990696.