

# Ground Lease Development Site

## 2900 Hwy 190 Covington, LA 70433

### PROPERTY SUMMARY



### Property Highlights

- Great development site located directly adjacent to the new Neighborhood Walmart.
- Currently improved with 2 small buildings which are given no value.
- Existing digital billboard to remain on property.

### Offering Summary

Lease Rate:	Negotiable
Available SF:	1.05 Acres
Lot Size:	1.05 Acres

Demographics	1 Mile	5 Miles	10 Miles
Total Households	948	16,446	42,348
Total Population	2,692	43,413	114,185
Average HH Income	\$83,515	\$81,901	\$88,338

**Matthew Pittman, CCIM**  
504.322.1275  
mpittman@beaubox.com

Broker of Record, Beau J. Box; Licensed by the Louisiana Real Estate Commission, Mississippi Real Estate Commission, Alabama Real Estate Commission and Florida Real Estate Commission, USA. This information has been secured from sources we believe to be reliable, but we make no representations or warranties, expressed or implied, as to the accuracy of the information. References to square footage or age are approximate. Buyer must verify the information and bears all risk for any inaccuracies. © Beau Box Commercial Real Estate. | December 21, 2021





# Ground Lease Development Site

2900 Hwy 190 Covington, LA 70433

## SURROUNDING RETAIL



**Matthew Pittman, CCIM**  
504.322.1275  
mpittman@beaibox.com

Broker of Record, Beau J. Box; Licensed by the Louisiana Real Estate Commission, Mississippi Real Estate Commission, Alabama Real Estate Commission and Florida Real Estate Commission, USA. This information has been secured from sources we believe to be reliable, but we make no representations or warranties, expressed or implied, as to the accuracy of the information. References to square footage or age are approximate. Buyer must verify the information and bears all risk for any inaccuracies. © Beau Box Commercial Real Estate. | December 21, 2021

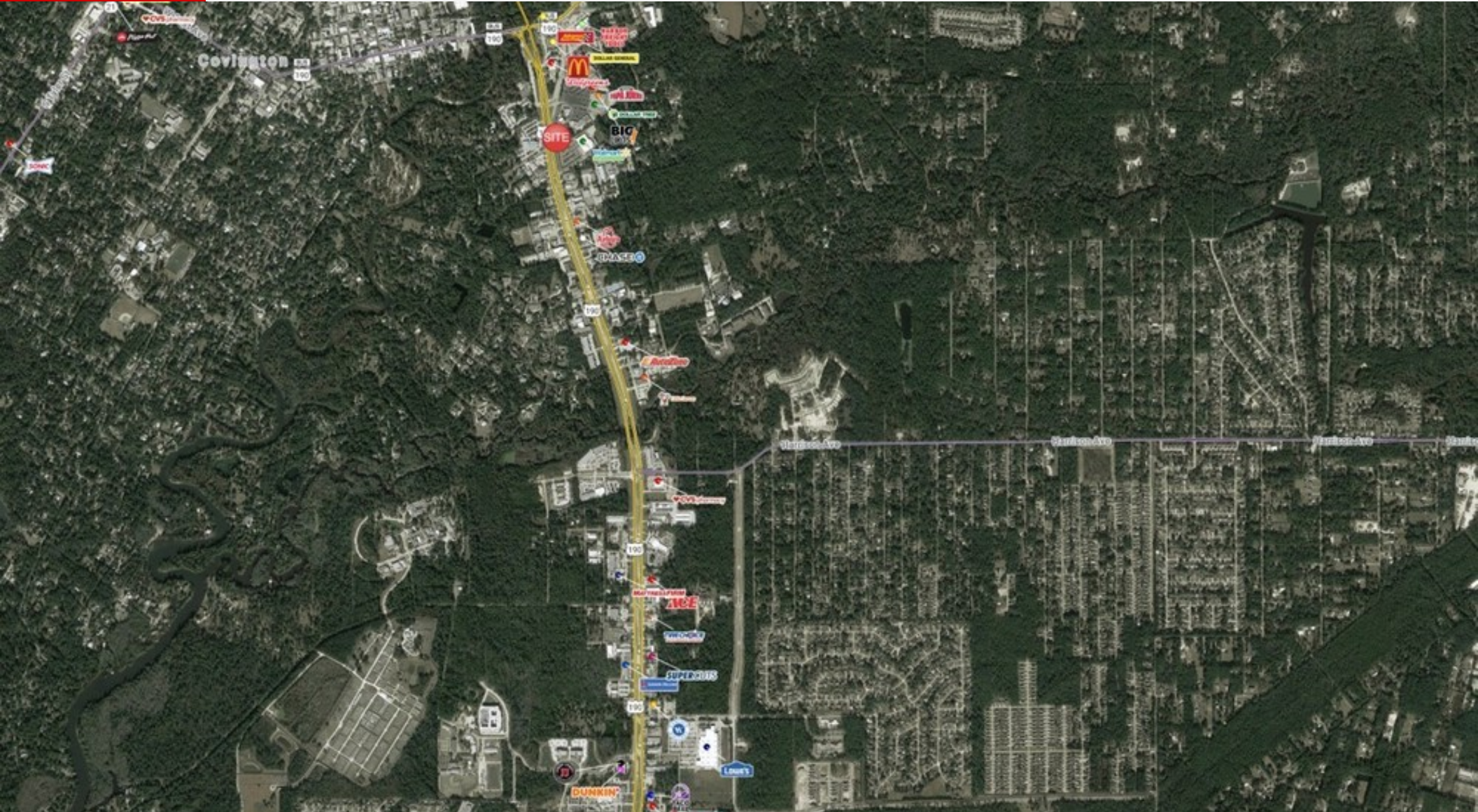




# Ground Lease Development Site

2900 Hwy 190 Covington, LA 70433

## LOCATION MAP



**Matthew Pittman, CCIM**  
504.322.1275  
mpittman@beaibox.com

Broker of Record, Beau J. Box; Licensed by the Louisiana Real Estate Commission, Mississippi Real Estate Commission, Alabama Real Estate Commission and Florida Real Estate Commission, USA. This information has been secured from sources we believe to be reliable, but we make no representations or warranties, expressed or implied, as to the accuracy of the information. References to square footage or age are approximate. Buyer must verify the information and bears all risk for any inaccuracies. © Beau Box Commercial Real Estate. | December 21, 2021

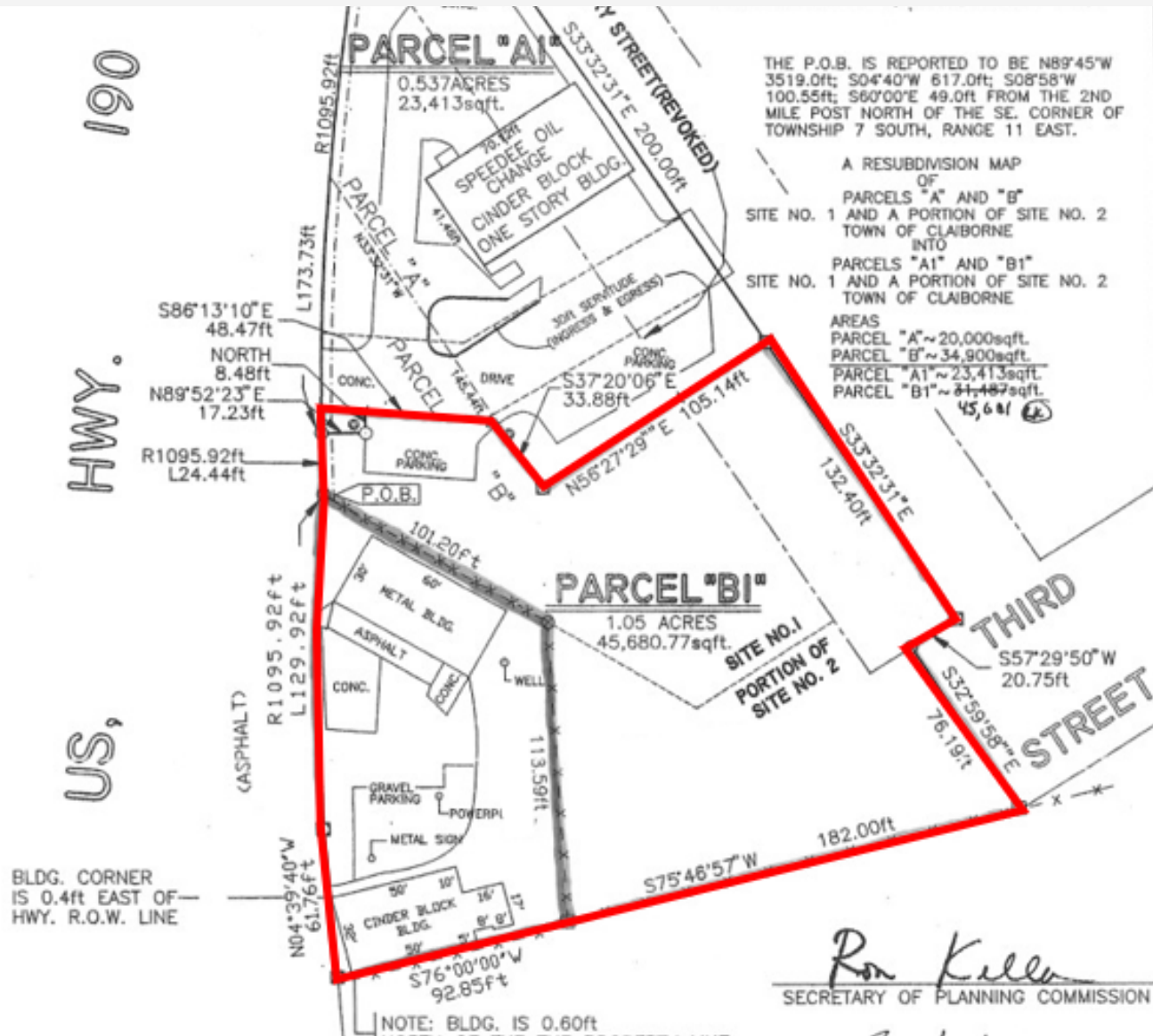




# Ground Lease Development Site

2900 Hwy 190 Covington, LA 70433

SURVEY



**Matthew Pittman, CCIM**  
504.322.1275  
mpittman@beaubox.com

Broker of Record, Beau J. Box; Licensed by the Louisiana Real Estate Commission, Mississippi Real Estate Commission, Alabama Real Estate Commission and Florida Real Estate Commission, USA. This information has been secured from sources we believe to be reliable, but we make no representations or warranties, expressed or implied, as to the accuracy of the information. References to square footage or age are approximate. Buyer must verify the information and bears all risk for any inaccuracies. © Beau Box Commercial Real Estate. | December 21, 2021

