

# 1600 PENFIELD RD

1600 Penfield Rd  
Rochester, NY 14625



## PROPERTY DESCRIPTION

Undeveloped commercial lot is available for purchase. Plans for a 4,000 SF office space are available as well.

## LOCATION DESCRIPTION

Located in the town of Penfield on Penfield Road across from Panorama Plaza, this site is in the heart of a trade area that serves the suburbs of Penfield, Brighton, and East Rochester, as well as communities on the east side of the City of Rochester. This creates a large and diverse trade area population that is overwhelming college-educated working professionals and firmly middle- to upper-middle class. The site is just three minutes from NY-441, a major east-west road in the Rochester MSA.

Nearby retailers of note include Tops, Home Depot, Planet Fitness, Walgreens, Rite Aid, M&T Bank, Citizens Bank, Burger King, Popeyes, Dollar Tree, Advance Auto Parts, and Harbor Freight.

## PROPERTY HIGHLIGHTS

- Shovel ready lot
- Great visibility from both directions
- Across from a large grocery-anchored shopping center

## OFFERING SUMMARY

Sale Price: Subject To Offer

Lot Size: 0.68 Acres

## DEMOGRAPHICS

	1 MILE	3 MILES	5 MILES
Total Households	1,904	20,794	63,691
Total Population	3,886	51,855	152,803
Average HH Income	\$65,108	\$85,587	\$86,208



**Brian Donovan**  
716.998.2943 | brian@donovanres.com  
460 East Ave, Rochester, NY 14607  
www.donovanres.com  
NY #10491202934





# 1600 PENFIELD RD

1600 Penfield Rd  
Rochester, NY 14625



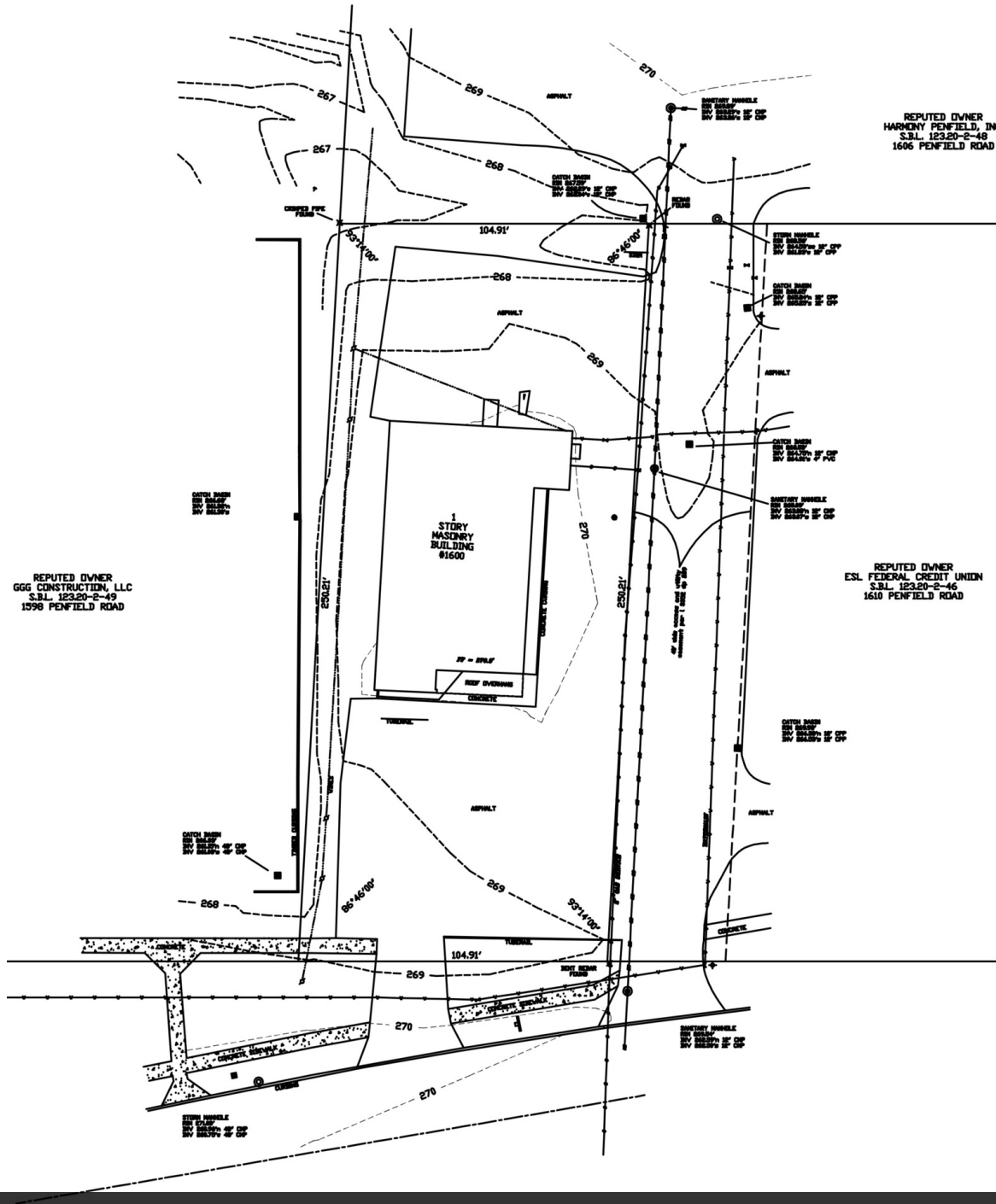
**Brian Donovan**  
716.998.2943 | [brian@donovanres.com](mailto:brian@donovanres.com)  
460 East Ave, Rochester, NY 14607  
[www.donovanres.com](http://www.donovanres.com)  
NY #10491202934





# 1600 PENFIELD RD

1600 Penfield Rd  
Rochester, NY 14625



Survey

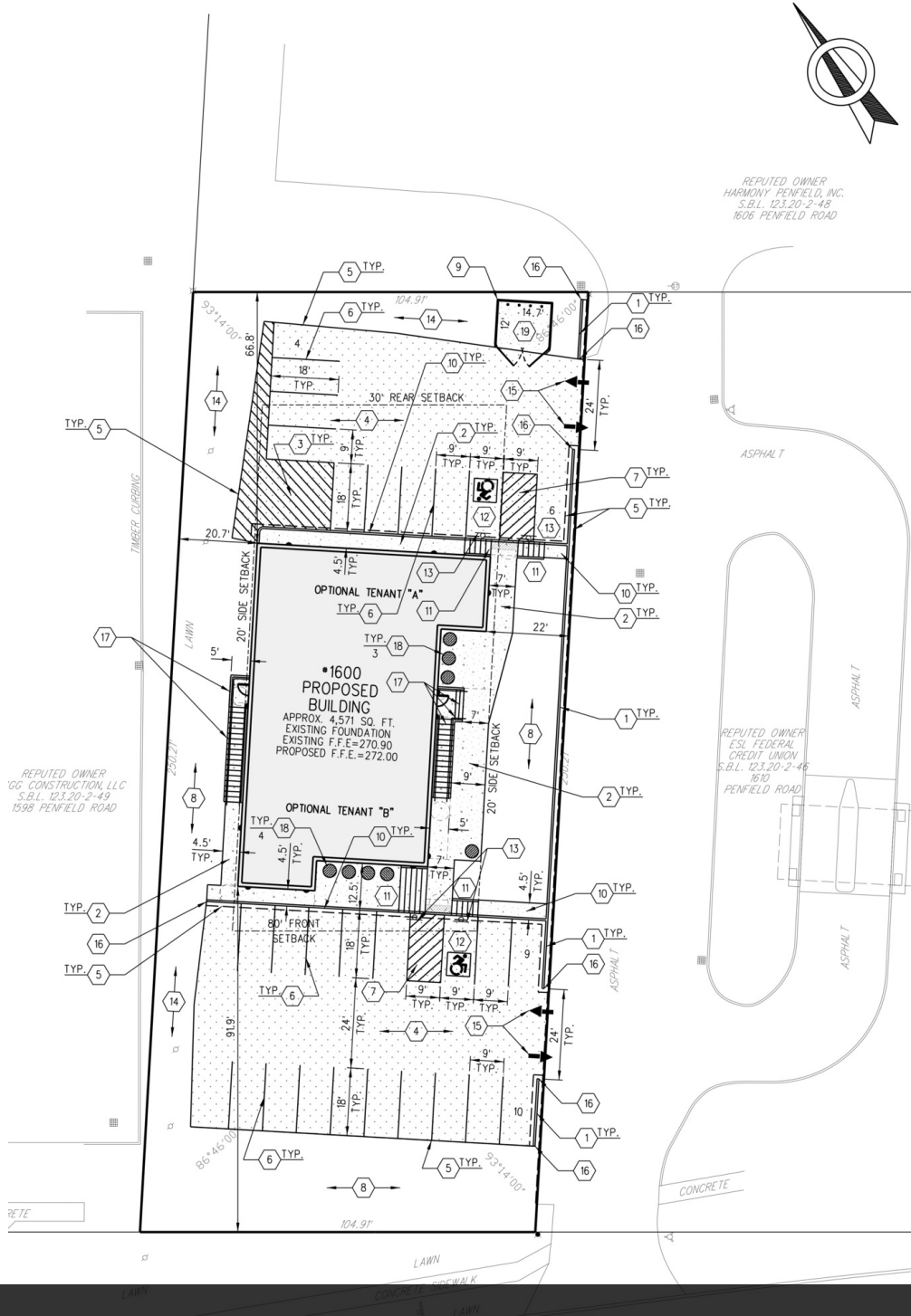


Brian Donovan  
716.998.2943 | [brian@donovanres.com](mailto:brian@donovanres.com)  
460 East Ave, Rochester, NY 14607  
[www.donovanres.com](http://www.donovanres.com)  
NY #10491202934



# 1600 PENFIELD RD

1600 Penfield Rd  
Rochester, NY 14625



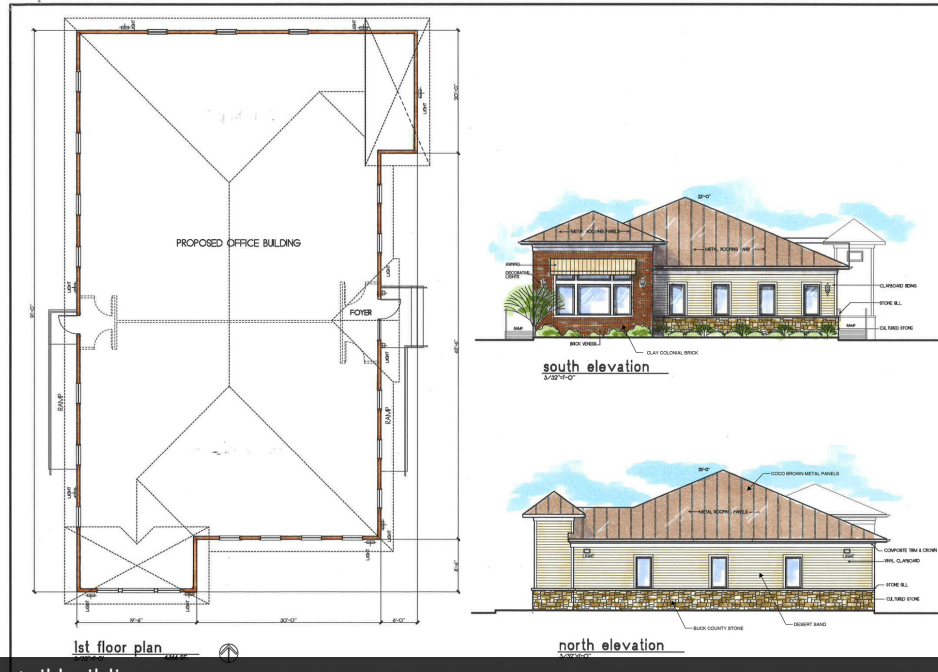
Survey/Concept Site Plan



**Brian Donovan**  
716.998.2943 | [brian@donovanres.com](mailto:brian@donovanres.com)  
460 East Ave, Rochester, NY 14607  
[www.donovanres.com](http://www.donovanres.com)  
NY #10491202934



1600 Penfield Rd  
Rochester, NY 14625



**east elevation**  
3/12/2020

**west elevation**  
3/12/2020



**RETAIL** BROKERS  
NETWORK



# 1600 PENFIELD RD

1600 Penfield Rd  
Rochester, NY 14625



**Brian Donovan**  
716.998.2943 | [brian@donovanres.com](mailto:brian@donovanres.com)  
460 East Ave, Rochester, NY 14607  
[www.donovanres.com](http://www.donovanres.com)  
NY #10491202934





# 1600 PENFIELD RD

1600 Penfield Rd  
Rochester, NY 14625



Brian Donovan  
716.998.2943 | brian@donovanres.com  
460 East Ave, Rochester, NY 14607  
www.donovanres.com  
NY #10491202934





# 1600 PENFIELD RD

1600 Penfield Rd  
Rochester, NY 14625



Brian Donovan  
716.998.2943 | [brian@donovanres.com](mailto:brian@donovanres.com)  
460 East Ave, Rochester, NY 14607  
[www.donovanres.com](http://www.donovanres.com)  
NY #10491202934





# 1600 PENFIELD RD

1600 Penfield Rd  
Rochester, NY 14625



Demographics	1 Mi.	2 Mi.	3 Mi.	10 Min.
<b>Population</b>				
<b>2023 Estimated Population</b>	<b>4,112</b>	<b>23,436</b>	<b>54,195</b>	<b>102,319</b>
2028 Projected Population	4,123	23,140	53,131	100,616
2020 Census Population	4,182	23,716	54,427	102,942
2010 Census Population	3,991	24,120	54,399	102,068
<b>2023 Median Age</b>	<b>53.2</b>	<b>44.4</b>	<b>45.2</b>	<b>41.5</b>
<b>Households</b>				
<b>2023 Estimated Households</b>	<b>2,121</b>	<b>10,302</b>	<b>23,304</b>	<b>47,785</b>
2028 Projected Households	2,115	10,118	22,746	46,831
2020 Census Households	2,134	10,301	23,129	47,471
2010 Census Households	1,959	10,169	22,470	45,704
<b>Race and Ethnicity</b>				
2023 Estimated White	90.5%	84.0%	83.4%	81.5%
2023 Estimated Black or African American	2.9%	3.4%	4.1%	7.4%
2023 Estimated Asian or Pacific Islander	2.0%	7.2%	7.1%	5.0%
2023 Estimated American Indian or Native Alaskan	0.2%	0.1%	0.1%	0.2%
2023 Estimated Other Races	4.4%	5.2%	5.2%	5.9%
2023 Estimated Hispanic	3.6%	4.9%	4.7%	5.6%
<b>Income</b>				
2023 Estimated Average Household Income	\$123,583	\$125,506	\$141,079	\$127,102
<b>2023 Estimated Median Household Income</b>	<b>\$92,017</b>	<b>\$86,037</b>	<b>\$95,145</b>	<b>\$88,166</b>
2023 Estimated Per Capita Income	\$63,841	\$55,606	\$61,075	\$59,643
<b>Education (Age 25+)</b>				
2023 Estimated High School Graduate	15.0%	16.6%	14.8%	14.2%
2023 Estimated Some College	14.9%	14.5%	13.7%	13.4%
2023 Estimated Associates Degree Only	11.9%	10.5%	9.4%	9.0%
2023 Estimated Bachelors Degree Only	25.6%	27.2%	29.8%	30.4%
2023 Estimated Graduate Degree	28.0%	25.6%	27.8%	27.9%
<b>2023 Estimated College Educated</b>	<b>0.80</b>	<b>0.78</b>	<b>0.81</b>	<b>0.81</b>
<b>Business</b>				
2023 Estimated Total Businesses	227	1,043	1,895	4,037
<b>2023 Estimated Total Employees</b>	<b>2,947</b>	<b>12,451</b>	<b>20,495</b>	<b>44,464</b>
2023 Estimated Employee Population per Business	13.0	11.9	10.8	11.0
2023 Estimated Residential Population per Business	18.1	22.5	28.6	25.3



**Brian Donovan**  
716.998.2943 | [brian@donovanres.com](mailto:brian@donovanres.com)  
460 East Ave, Rochester, NY 14607  
[www.donovanres.com](http://www.donovanres.com)  
NY #10491202934

