



BAYSHORE ACRES

22901 Bayshore Rd., Port Charlotte, FL 33980

SALE



OFFERING SUMMARY

Sale Price:	\$4,500,000
Lot Size:	8.5 Acres
Zoning:	Commercial Neighborhood (CN RE 1)
Market:	SW Florida
Submarket:	Sarasota Port Charlotte
Price / SF:	\$12.15

PROPERTY OVERVIEW

The areas natural attractiveness to retirees and single-family homeowners plays a large role in the development of apartments in the metro. The metros population continues to grow at an impressive rate, probably with retirees relocating to an income-tax-free, warm-weather environment.

Rent growth has remained strong due to a complete lack of supply. This location would be ideal for Multi Family development or ALF development. The proximity to the Beach, Parks, Shopping combines with the areas excellent access to health care and hospitals offer an almost unmatched advantage for this property.

PROPERTY HIGHLIGHTS

- 8.5 Acres zoned Multi Family Mixed Use entitled for 157 Units MOL.
- Harbor views at three stories and above.
- Special exception allows 8 stories and additional DU's.

OTHER RESOURCES

[VIDEO](#)

CBCWORLDWIDE.COM

Ray Brunner
415 608 1942
raybrunner@me.com

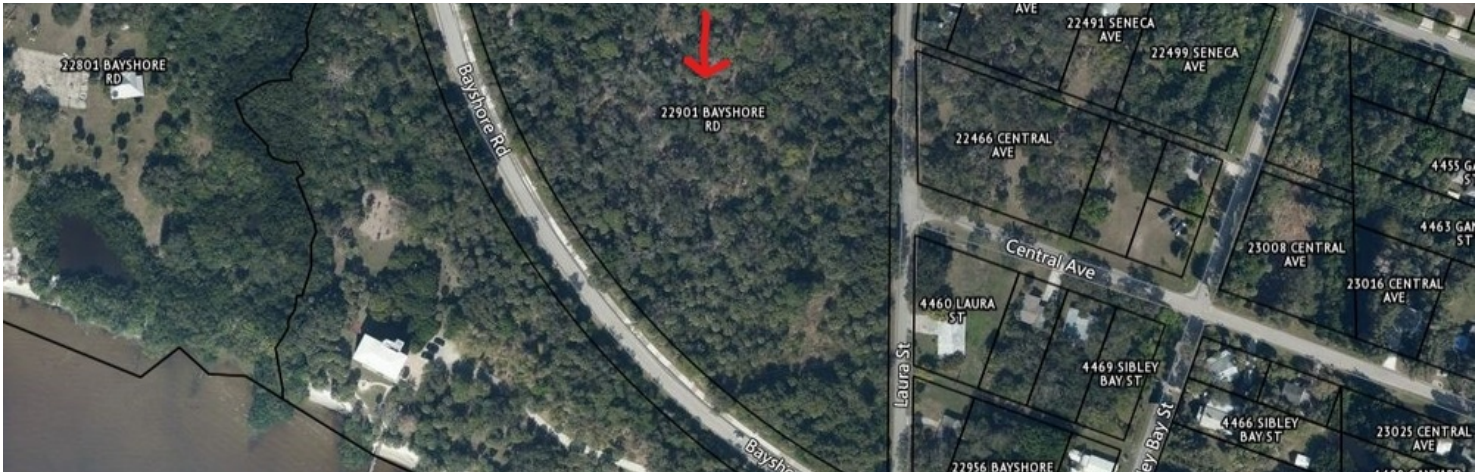
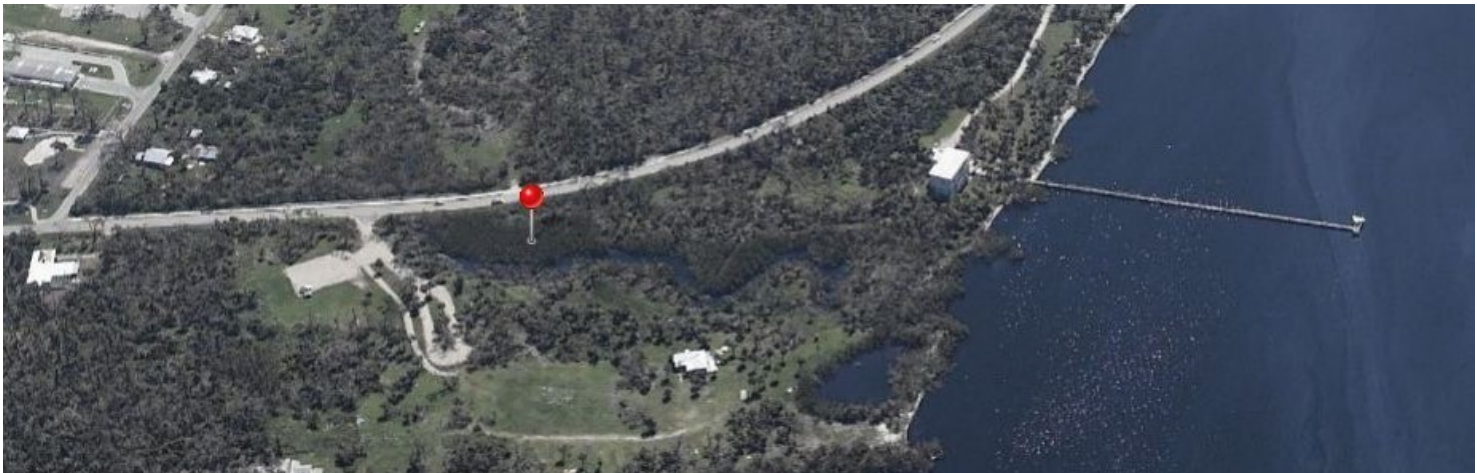
Alfredo Sanchez
941 627 3321
Alsanchez517@gmail.com



BAYSHORE ACRES

22901 Bayshore Rd., Port Charlotte, FL 33980

SALE



CBCWORLDWIDE.COM

Ray Brunner
415 608 1942
raybrunner@me.com

Alfredo Sanchez
941 627 3321
Alsanchez517@gmail.com

