

2,160-27,054 SF
RETAIL



FOR LEASE



Burlington Square

22269-22331 Eureka Rd, Taylor, Michigan 48180

Property Highlights

- **New Ownership and Management Team**, Improvements Forthcoming
- Located in the Epicenter of Taylor's Regional Retail Corridor on Eureka Road. Convenient Ample Parking Fields with Multiple Curb Cuts on Eureka Road and Racho Blvd, Adjacent to the New 300,000 SF Taylor Menard's
- Major Retailers in the Area Include: Burlington Coat Factory, Meijer, Target, Dick's Sporting Goods, Hobby Lobby, Bed Bath & Beyond, Christmas Tree Shoppes, Jo-Ann Fabrics, Art Van Furniture, Home Depot, Best Buy, Macy's, Petsmart and More
- Southland Center Mall Undergoing \$60 Million Renovation, Including a New 12-Screen Cinemark NextGen Theater
- Towneplace Suites Redevelopment of the Former Ramada Inn at I-75 and Eureka Road

OFFERING SUMMARY

Lease Rate:	Contact Listing Agent(s)
Available SF:	2,160 - 27,054 SF
Building Size:	185,635 SF

DEMOGRAPHICS 3 MILES 5 MILES 10 MILES

Total Households	23,625	82,563	262,886
Total Population	61,416	214,332	686,620
Average HH Income	\$54,842	\$59,784	\$59,393



Commercial Real Estate Services, Worldwide.

www.naifarbman.com

Ron Goldstone

Executive Vice President | 248.351.4371
goldstone@farbman.com

Brandon Ben-Ezra

Leasing and Sales Associate | 947.517.6226
ben-ezra@farbman.com

NO WARRANTY, EXPRESS OR IMPLIED, IS MADE AS TO THE ACCURACY OF THE INFORMATION CONTAINED HEREIN. THIS INFORMATION IS SUBMITTED SUBJECT TO ERRORS, OMISSIONS, CHANGE OF PRICE, RENTAL OR OTHER CONDITIONS, WITHDRAWAL WITHOUT NOTICE, AND IS SUBJECT TO ANY SPECIAL LISTING CONDITIONS IMPOSED BY OUR PRINCIPALS. COOPERATING BROKERS, BUYERS, TENANTS AND OTHER PARTIES WHO RECEIVE THIS DOCUMENT SHOULD NOT RELY ON IT, BUT SHOULD USE IT AS A STARTING POINT OF ANALYSIS, AND SHOULD INDEPENDENTLY CONFIRM THE ACCURACY OF THE INFORMATION CONTAINED HEREIN THROUGH A DUE DILIGENCE REVIEW OF THE BOOKS, RECORDS, FILES AND DOCUMENTS THAT CONSTITUTE RELIABLE SOURCES OF THE INFORMATION DESCRIBED HEREIN. LOGOS ARE FOR IDENTIFICATION PURPOSES ONLY AND MAY BE TRADEMARKS OF THEIR RESPECTIVE COMPANIES. NAI Farbman, INC. CA BRE LIC. #01990696.

2,160-27,054 SF
RETAIL



FOR LEASE



2,160-27,054 SF
RETAIL



FOR LEASE



Commercial Real Estate Services, Worldwide.
www.naifarbman.com

Ron Goldstone
Executive Vice President | 248.351.4371
goldstone@farbman.com

Brandon Ben-Ezra
Leasing and Sales Associate | 947.517.6226
ben-ezra@farbman.com

NO WARRANTY, EXPRESS OR IMPLIED, IS MADE AS TO THE ACCURACY OF THE INFORMATION CONTAINED HEREIN. THIS INFORMATION IS SUBMITTED SUBJECT TO ERRORS, OMISSIONS, CHANGE OF PRICE, RENTAL OR OTHER CONDITIONS, WITHDRAWAL WITHOUT NOTICE, AND IS SUBJECT TO ANY SPECIAL LISTING CONDITIONS IMPOSED BY OUR PRINCIPALS. COOPERATING BROKERS, BUYERS, TENANTS AND OTHER PARTIES WHO RECEIVE THIS DOCUMENT SHOULD NOT RELY ON IT, BUT SHOULD USE IT AS A STARTING POINT OF ANALYSIS, AND SHOULD INDEPENDENTLY CONFIRM THE ACCURACY OF THE INFORMATION CONTAINED HEREIN THROUGH A DUE DILIGENCE REVIEW OF THE BOOKS, RECORDS, FILES AND DOCUMENTS THAT CONSTITUTE RELIABLE SOURCES OF THE INFORMATION DESCRIBED HEREIN. LOGOS ARE FOR IDENTIFICATION PURPOSES ONLY AND MAY BE TRADEMARKS OF THEIR RESPECTIVE COMPANIES. NAI Farbman, INC. CA BRE LIC. #01990696.

2,160-27,054 SF
RETAIL



FOR LEASE



Map data © 2022 Google Imagery © 2022 , CNES / Airbus, Maxar Technologies, U.S. Geological Survey, USDA/FPAC/GE

NAI Farbman

Commercial Real Estate Services, Worldwide.

www.naifarbman.com

Ron Goldstone

Executive Vice President | 248.351.4371
goldstone@farbman.com

Brandon Ben-Ezra

Leasing and Sales Associate | 947.517.6226
ben-ezra@farbman.com

NO WARRANTY, EXPRESS OR IMPLIED, IS MADE AS TO THE ACCURACY OF THE INFORMATION CONTAINED HEREIN. THIS INFORMATION IS SUBMITTED SUBJECT TO ERRORS, OMISSIONS, CHANGE OF PRICE, RENTAL OR OTHER CONDITIONS, WITHDRAWAL WITHOUT NOTICE, AND IS SUBJECT TO ANY SPECIAL LISTING CONDITIONS IMPOSED BY OUR PRINCIPALS. COOPERATING BROKERS, BUYERS, TENANTS AND OTHER PARTIES WHO RECEIVE THIS DOCUMENT SHOULD NOT RELY ON IT, BUT SHOULD USE IT AS A STARTING POINT OF ANALYSIS, AND SHOULD INDEPENDENTLY CONFIRM THE ACCURACY OF THE INFORMATION CONTAINED HEREIN THROUGH A DUE DILIGENCE REVIEW OF THE BOOKS, RECORDS, FILES AND DOCUMENTS THAT CONSTITUTE RELIABLE SOURCES OF THE INFORMATION DESCRIBED HEREIN. LOGOS ARE FOR IDENTIFICATION PURPOSES ONLY AND MAY BE TRADEMARKS OF THEIR RESPECTIVE COMPANIES. NAI Farbman, INC. CA BRE LIC. #01990696.

2,160-27,054 SF
RETAIL



FOR LEASE



2,160-27,054 SF RETAIL



FOR LEASE

LEASE INFORMATION

Lease Type:	NNN	Lease Term:	Negotiable
Total Space:	2,160 - 27,054 SF	Lease Rate:	Contact Listing Agent(s)

AVAILABLE SPACES

SUITE	SIZE (SF)
22263 Eureka Rd	22,000 SF
22275 Eureka Rd	27,054 SF
22277 Eureka Rd	3,850 SF
22279 Eureka Rd	6,050 SF
22283 Eureka Rd	3,850 SF
22289 Eureka Rd	3,300 SF
22291 Eureka Rd	7,700 SF
22295 Eureka Rd	2,200 SF
22299 Eureka Rd	2,174 SF
22301 Eureka Rd	4,510 SF
22305 Eureka Rd	2,160 SF
22307 Eureka Rd	3,740 SF



Commercial Real Estate Services, Worldwide.
www.naifarbman.com

Ron Goldstone
Executive Vice President | 248.351.4371
goldstone@farbman.com

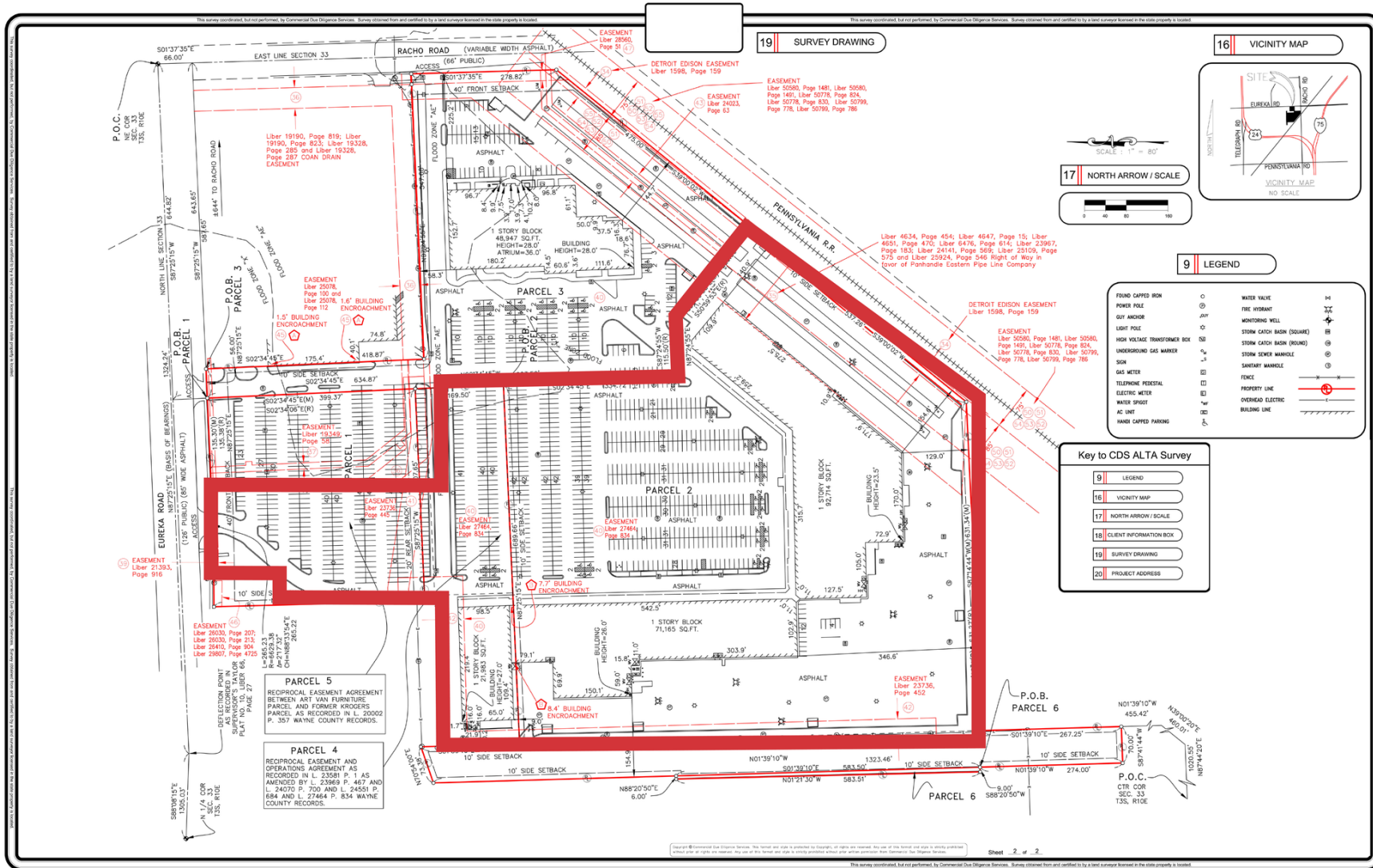
Brandon Ben-Ezra
Leasing and Sales Associate | 947.517.6226
ben-ezra@farbman.com

NO WARRANTY, EXPRESS OR IMPLIED, IS MADE AS TO THE ACCURACY OF THE INFORMATION CONTAINED HEREIN. THIS INFORMATION IS SUBMITTED SUBJECT TO ERRORS, OMISSIONS, CHANGE OF PRICE, RENTAL OR OTHER CONDITIONS, WITHDRAWAL WITHOUT NOTICE, AND IS SUBJECT TO ANY SPECIAL LISTING CONDITIONS IMPOSED BY OUR PRINCIPALS. COOPERATING BROKERS, BUYERS, TENANTS AND OTHER PARTIES WHO RECEIVE THIS DOCUMENT SHOULD NOT RELY ON IT, BUT SHOULD USE IT AS A STARTING POINT OF ANALYSIS, AND SHOULD INDEPENDENTLY CONFIRM THE ACCURACY OF THE INFORMATION CONTAINED HEREIN THROUGH A DUE DILIGENCE REVIEW OF THE BOOKS, RECORDS, FILES AND DOCUMENTS THAT CONSTITUTE RELIABLE SOURCES OF THE INFORMATION DESCRIBED HEREIN. LOGOS ARE FOR IDENTIFICATION PURPOSES ONLY AND MAY BE TRADEMARKS OF THEIR RESPECTIVE COMPANIES. NAI Farbman, INC. CA BRE LIC. #01990696.

2,160 - 27,054 SF
RETAIL



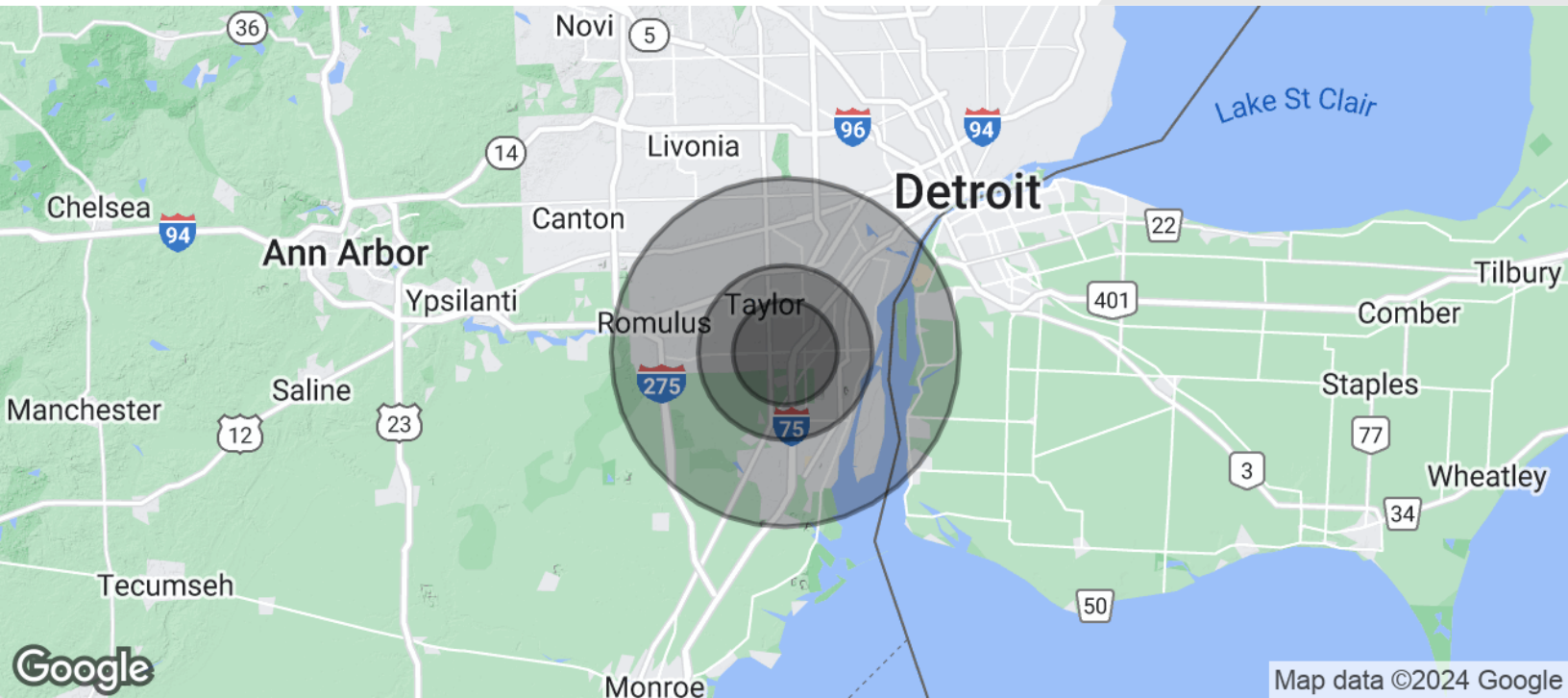
FOR LEASE



2,160-27,054 SF
RETAIL



FOR LEASE



POPULATION

3 MILES

5 MILES

10 MILES

Total Population	61,416	214,332	686,620
Average Age	37.7	38.4	38.3
Average Age (Male)	36.2	37.0	37.1
Average Age (Female)	38.5	39.6	39.4

HOUSEHOLDS & INCOME

3 MILES

5 MILES

10 MILES

Total Households	23,625	82,563	262,886
# of Persons per HH	2.6	2.6	2.6
Average HH Income	\$54,842	\$59,784	\$59,393
Average House Value	\$160,731	\$152,431	\$157,904

* Demographic data derived from 2020 ACS - US Census



Commercial Real Estate Services, Worldwide.

www.naifarbman.com

Ron Goldstone

Executive Vice President | 248.351.4371
goldstone@farbman.com

Brandon Ben-Ezra

Leasing and Sales Associate | 947.517.6226
ben-ezra@farbman.com

NO WARRANTY, EXPRESS OR IMPLIED, IS MADE AS TO THE ACCURACY OF THE INFORMATION CONTAINED HEREIN. THIS INFORMATION IS SUBMITTED SUBJECT TO ERRORS, OMISSIONS, CHANGE OF PRICE, RENTAL OR OTHER CONDITIONS, WITHDRAWAL WITHOUT NOTICE, AND IS SUBJECT TO ANY SPECIAL LISTING CONDITIONS IMPOSED BY OUR PRINCIPALS. COOPERATING BROKERS, BUYERS, TENANTS AND OTHER PARTIES WHO RECEIVE THIS DOCUMENT SHOULD NOT RELY ON IT, BUT SHOULD USE IT AS A STARTING POINT OF ANALYSIS, AND SHOULD INDEPENDENTLY CONFIRM THE ACCURACY OF THE INFORMATION CONTAINED HEREIN THROUGH A DUE DILIGENCE REVIEW OF THE BOOKS, RECORDS, FILES AND DOCUMENTS THAT CONSTITUTE RELIABLE SOURCES OF THE INFORMATION DESCRIBED HEREIN. LOGOS ARE FOR IDENTIFICATION PURPOSES ONLY AND MAY BE TRADEMARKS OF THEIR RESPECTIVE COMPANIES. NAI Farbman, INC. CA BRE LIC. #01990696.