

124 N Court St

124 N COURT ST, MEDINA, OH 44256

FOR LEASE
Office Building



PROPERTY DESCRIPTION

One unit available just steps away from Medina's Historic Town Square. Unit B is a 1600 SF office with waiting area, two private offices, two semi-private offices and two restrooms. There is dedicated parking for employees and clients and signage on the front of the building

OFFERING SUMMARY

Lease Rate:	\$2,250.00 per month (MG)
Number of Units:	1
Available SF:	1,600 SF
Lot Size:	0.304 Acres
Building Size:	4,000 SF



THE MASICA COMPANY

www.SperryCGA.com

Steve Masica

PRINCIPAL
330.714.4415
steve.masica@sperrycga.com
OH #2013002150

Michelle Masica

PRINCIPAL/BROKER
216.293.8900 x1
michelle.masica@sperrycga.com
OH #2019006823

Each office independently owned and operated.

We obtained the information above from sources we believe to be reliable. However, we have not verified its accuracy and make no guarantee, warranty or representation about it. It is submitted subject to the possibility of errors, omissions, change of price, rental or other conditions, prior sale, lease or financing, or withdrawal without notice. We include projections, opinions, assumptions or estimates for example only, and they may not represent current or future performance of the property. You and your tax and legal advisors should conduct your own investigation of the property and transaction.

124 N Court St
124 N COURT ST, MEDINA, OH 44256

FOR LEASE
Office Building



THE MASICA COMPANY

www.SperryCGA.com

Steve Masica

PRINCIPAL

330.714.4415

steve.masica@sperrycga.com

OH #2013002150

Michelle Masica

PRINCIPAL/BROKER

216.293.8900 x1

michelle.masica@sperrycga.com

OH #2019006823

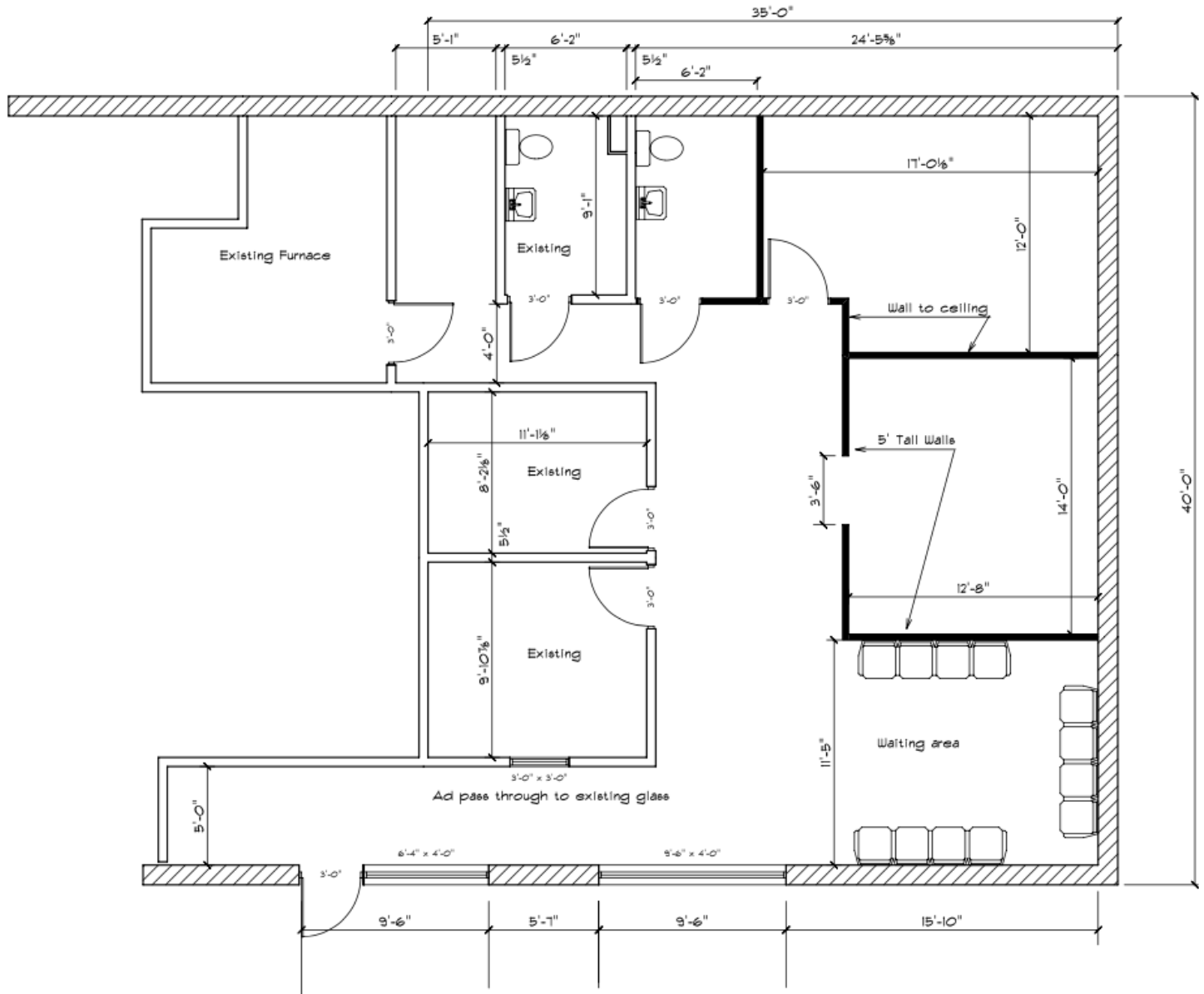
Each office independently owned and operated.

We obtained the information above from sources we believe to be reliable. However, we have not verified its accuracy and make no guarantee, warranty or representation about it. It is submitted subject to the possibility of errors, omissions, change of price, rental or other conditions, prior sale, lease or financing, or withdrawal without notice. We include projections, opinions, assumptions or estimates for example only, and they may not represent current or future performance of the property. You and your tax and legal advisors should conduct your own investigation of the property and transaction.

124 N Court St

124 N COURT ST, MEDINA, OH 44256

FOR LEASE
Office Building



THE MASICA COMPANY

www.SperryCGA.com

Steve Masica

PRINCIPAL

330.714.4415

steve.masica@sperrycga.com

OH #2013002150

Michelle Masica

PRINCIPAL/BROKER

216.293.8900 x1

michelle.masica@sperrycga.com

OH #2019006823

Each office independently owned and operated.

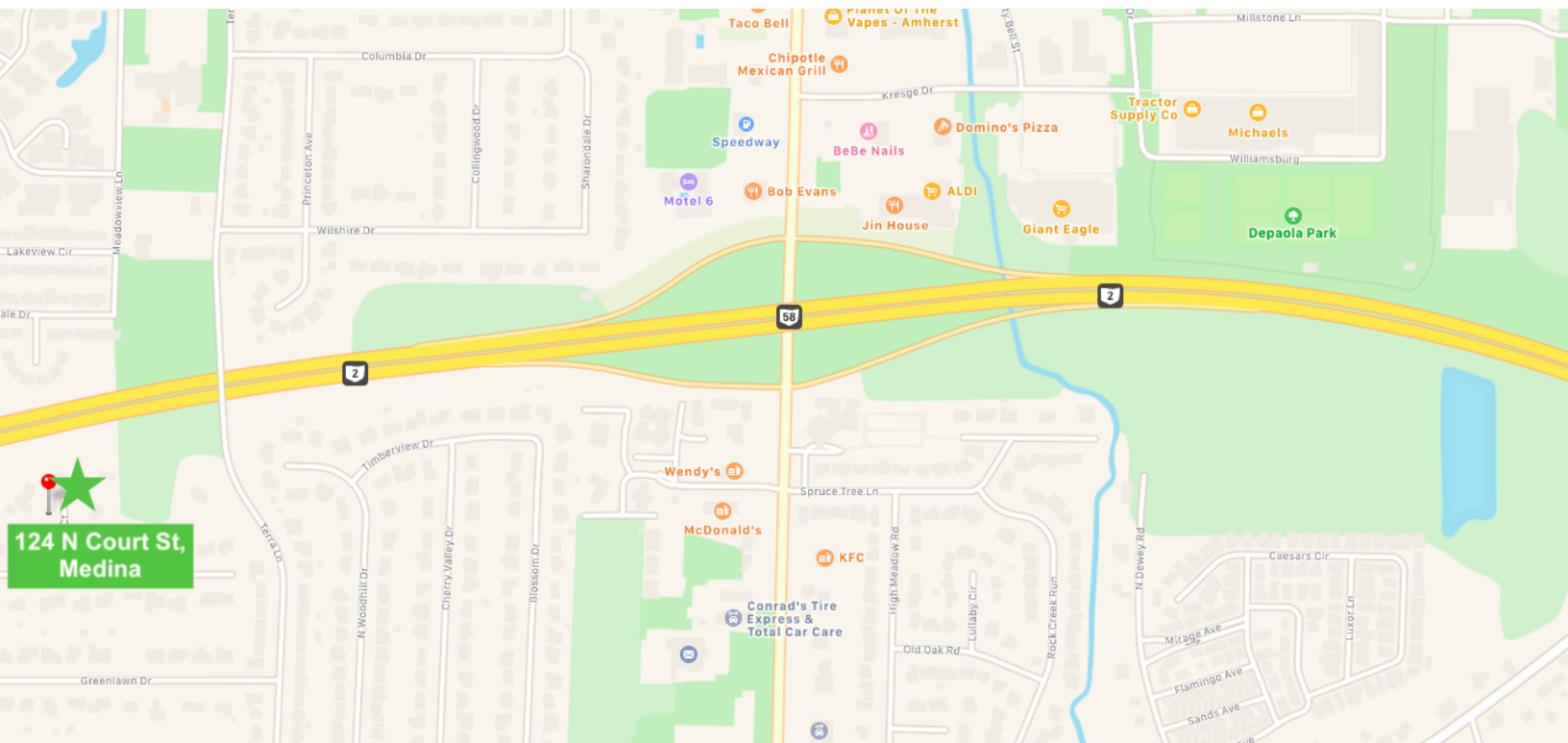
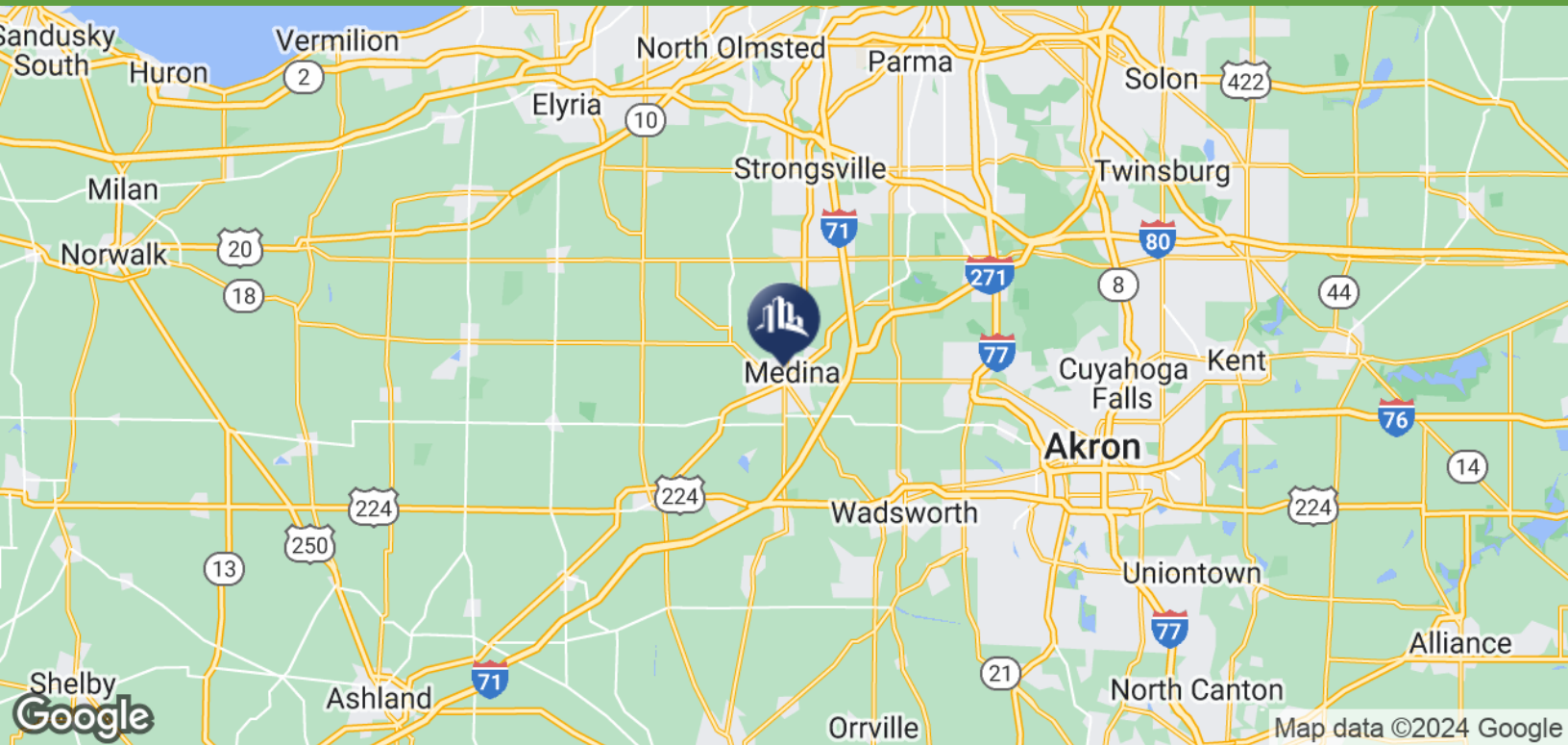
We obtained the information above from sources we believe to be reliable. However, we have not verified its accuracy and make no guarantee, warranty or representation about it. It is submitted subject to the possibility of errors, omissions, change of price, rental or other conditions, prior sale, lease or financing, or withdrawal without notice. We include projections, opinions, assumptions or estimates for example only, and they may not represent current or future performance of the property. You and your tax and legal advisors should conduct your own investigation of the property and transaction.

124 N Court St

124 N COURT ST, MEDINA, OH 44256

FOR LEASE

Office Building



THE MASICA COMPANY

www.SperryCGA.com

Steve Masica

PRINCIPAL

330.714.4415

steve.masica@sperrycga.com

OH #2013002150

Michelle Masica

PRINCIPAL/BROKER

216.293.8900 x1

michelle.masica@sperrycga.com

OH #2019006823

Each office independently owned and operated.

We obtained the information above from sources we believe to be reliable. However, we have not verified its accuracy and make no guarantee, warranty or representation about it. It is submitted subject to the possibility of errors, omissions, change of price, rental or other conditions, prior sale, lease or financing, or withdrawal without notice. We include projections, opinions, assumptions or estimates for example only, and they may not represent current or future performance of the property. You and your tax and legal advisors should conduct your own investigation of the property and transaction.