

Former CVS Pharmacy For Sublease

1600 Lapalco Blvd Harvey, LA 70058

PROPERTY SUMMARY



Property Highlights

- Hard corner site located at the intersection of Lapalco Blvd. & Manhattan Blvd.
- Existing Drive-Thru

Offering Summary

Lease Rate:	\$12.00 SF/yr (NNN)
Available SF:	13,013 SF
Lot Size:	1.19 Acres
Building Size:	13,013 SF
Sublease Expiration:	1/31/2031

Matthew Pittman, CCIM
504.322.1275
mpittman@beaubox.com

Broker of Record, Beau J. Box; Licensed by the Louisiana Real Estate Commission, Mississippi Real Estate Commission, Alabama Real Estate Commission and Florida Real Estate Commission, USA. This information has been secured from sources we believe to be reliable, but we make no representations or warranties, expressed or implied, as to the accuracy of the information. References to square footage or age are approximate. Buyer must verify the information and bears all risk for any inaccuracies. © Beau Box Commercial Real Estate. 5500 Bankers Avenue, Baton Rouge, LA 70808 | 225-237-3343. | February 22, 2024



Former CVS Pharmacy For Sublease

1600 Lapalco Blvd Harvey, LA 70058

LOCATION MAP



Matthew Pittman, CCIM
504.322.1275
mpittman@beaibox.com

Broker of Record, Beau J. Box; Licensed by the Louisiana Real Estate Commission, Mississippi Real Estate Commission, Alabama Real Estate Commission and Florida Real Estate Commission, USA. This information has been secured from sources we believe to be reliable, but we make no representations or warranties, expressed or implied, as to the accuracy of the information. References to square footage or age are approximate. Buyer must verify the information and bears all risk for any inaccuracies. © Beau Box Commercial Real Estate. 5500 Bankers Avenue, Baton Rouge, LA 70808 | 225-237-3343. | February 22, 2024



Former CVS Pharmacy For Sublease

1600 Lapalco Blvd Harvey, LA 70058

ADDITIONAL PHOTOS



Matthew Pittman, CCIM
504.322.1275
mpittman@beaubox.com

Broker of Record, Beau J. Box; Licensed by the Louisiana Real Estate Commission, Mississippi Real Estate Commission, Alabama Real Estate Commission and Florida Real Estate Commission, USA. This information has been secured from sources we believe to be reliable, but we make no representations or warranties, expressed or implied, as to the accuracy of the information. References to square footage or age are approximate. Buyer must verify the information and bears all risk for any inaccuracies. © Beau Box Commercial Real Estate. 5500 Bankers Avenue, Baton Rouge, LA 70808 | 225-237-3343. | February 22, 2024



SURVEY



BEAU BOX
REAL ESTATE

Former CVS Pharmacy For Sublease

1600 Lapalco Blvd Harvey, LA 70058

MICRO AERIAL



Matthew Pittman, CCIM
504.322.1275
mpittman@beaibox.com

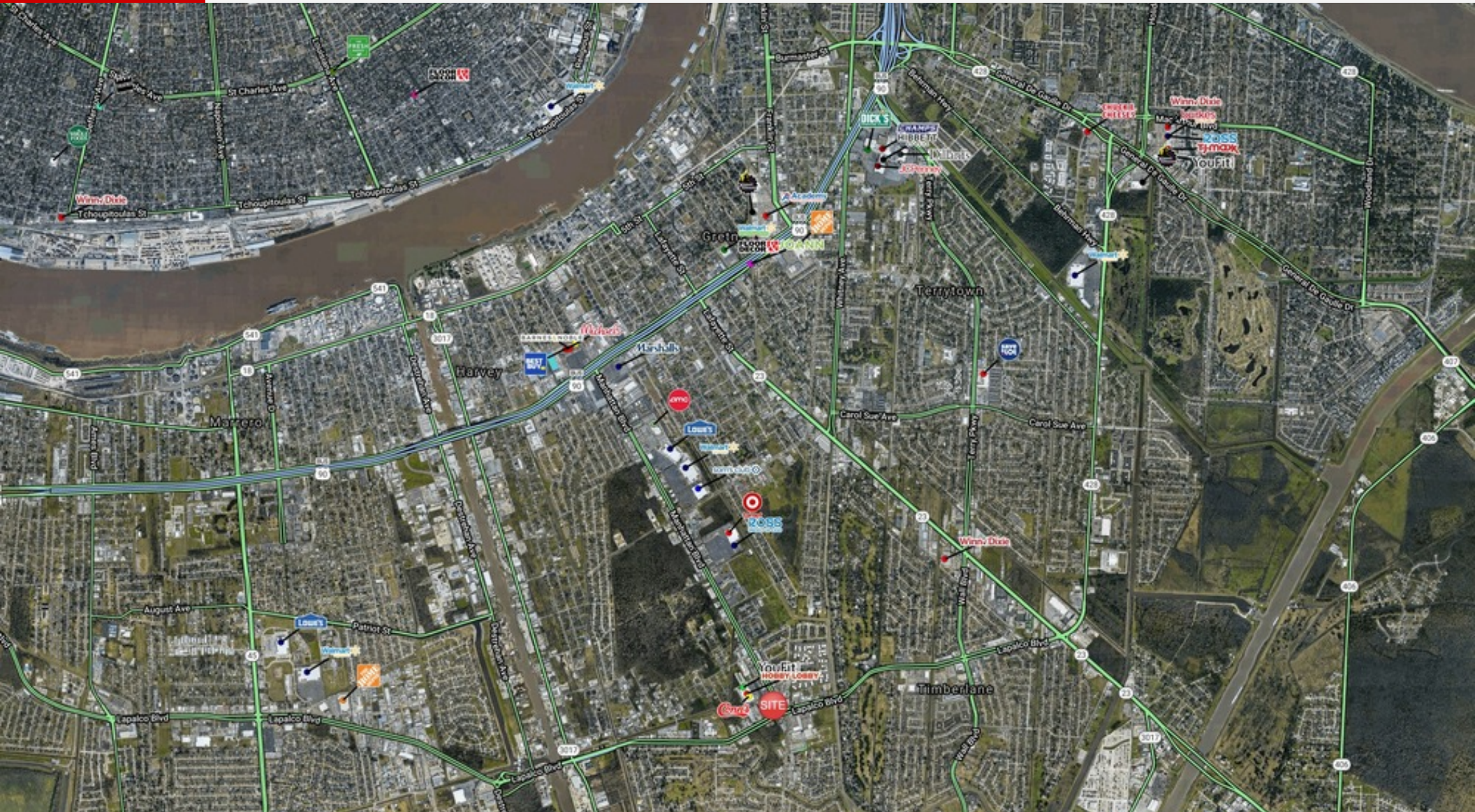
Broker of Record, Beau J. Box; Licensed by the Louisiana Real Estate Commission, Mississippi Real Estate Commission, Alabama Real Estate Commission and Florida Real Estate Commission, USA. This information has been secured from sources we believe to be reliable, but we make no representations or warranties, expressed or implied, as to the accuracy of the information. References to square footage or age are approximate. Buyer must verify the information and bears all risk for any inaccuracies. © Beau Box Commercial Real Estate. 5500 Bankers Avenue, Baton Rouge, LA 70808 | 225-237-3343. | February 22, 2024



Former CVS Pharmacy For Sublease

1600 Lapalco Blvd Harvey, LA 70058

MACRO AERIAL



Matthew Pittman, CCIM
504.322.1275
mpittman@beaibox.com

Broker of Record, Beau J. Box; Licensed by the Louisiana Real Estate Commission, Mississippi Real Estate Commission, Alabama Real Estate Commission and Florida Real Estate Commission, USA. This information has been secured from sources we believe to be reliable, but we make no representations or warranties, expressed or implied, as to the accuracy of the information. References to square footage or age are approximate. Buyer must verify the information and bears all risk for any inaccuracies. © Beau Box Commercial Real Estate. 5500 Bankers Avenue, Baton Rouge, LA 70808 | 225-237-3343. | February 22, 2024

