

NAI Southcoast

±1.7 Acre Professional Site

FOR SALE

±1.7 ACRES

SW BECKER RD

191 SW Becker Road

Port St. Lucie, Florida 34953

\$649,000

Property Features:

Sale Price:	\$649,000
Jurisdiction:	City of Port St. Lucie
Land Area:	±1.7 Acres
Land Use:	ROI
Zoning:	Professional
Frontage:	595'
Parcel ID:	3420-665-0014-000-3

For more information:

Stuart Duffin, P.A., SIOR, CCIM

Broker Associate

+1 772 579 0370 • sduffin@naisouthcoast.com

Carrie Duffin

Sales Associate

+1 772 233 5219 • carrie@naisouthcoast.com

NO WARRANTY OR REPRESENTATION, EXPRESS OR IMPLIED, IS MADE AS TO THE ACCURACY OF THE INFORMATION CONTAINED HEREIN, AND THE SAME IS SUBMITTED SUBJECT TO ERRORS, OMISSIONS, CHANGE OF PRICE, RENTAL OR OTHER CONDITIONS, PRIOR SALE, LEASE OR FINANCING, OR WITHDRAWAL WITHOUT NOTICE, AND OF ANY SPECIAL LISTING CONDITIONS IMPOSED BY OUR PRINCIPALS NO WARRANTIES OR REPRESENTATIONS ARE MADE AS TO THE CONDITION OF THE PROPERTY OR ANY HAZARDS CONTAINED THEREIN ARE ANY TO BE IMPLIED.

100 SW Albany Avenue, 2nd Floor

Stuart, Florida 34994

+1 772 286 6292

www.naisouthcoast.com

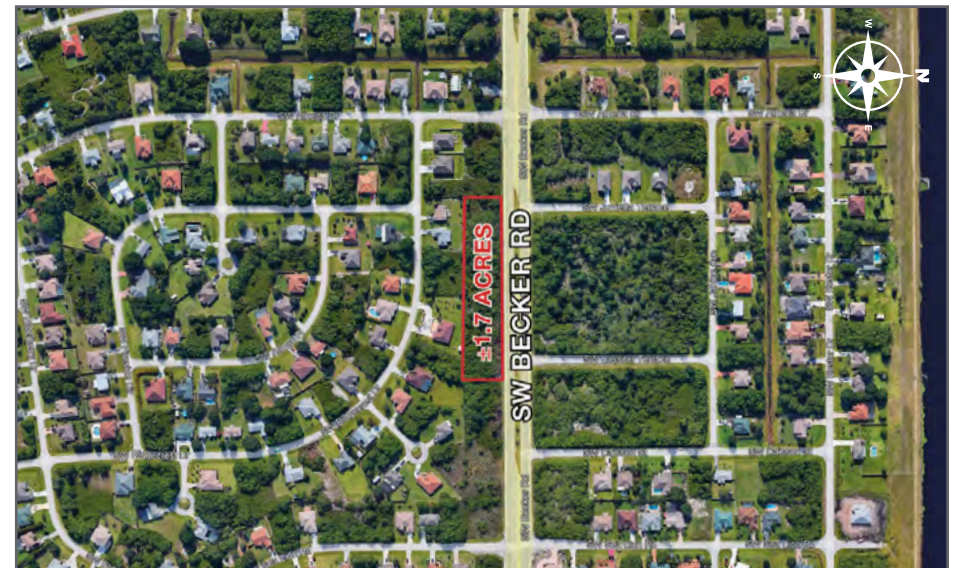
Overview

Property Overview

- 1.71 acre commercial land with nearly 600' feet of exposure to SW Becker Road in Port St. Lucie, FL.
- City of Port St Lucie is the 7th largest and the fastest growing City in Florida
- Current zoning would allow for administrative, business, or professional use along other uses permitted under the Professional Zoning District.
- Connection to municipal services on-site.
- Located in a fast-growing area of Port St. Lucie which is bustling with development activity.
- Large scale single-family home communities as well as townhomes and apartments are being built in the area.
- Further along Becker Rd there is a new storage facility. Retail services and medical offices are slated for the same corridor between I-95 and the FL Turnpike.

Property Highlights

- The City of Port St. Lucie is the 7th largest city in FL and growing quickly.
- 595 Feet of Frontage on busy Becker Rd. in Port St. Lucie, FL.
- Professional office or Administrative Businesses ideal within this zoning.
- Minutes from Becker Rd, FL Turnpike Entrance/Exit.
- Easy access to Tradition and I-95 to the West, and Palm to the South and East.



Zoning Information

Purpose. The purpose of the professional zoning district (P) shall be to locate and establish areas within the City which are deemed to be uniquely suited for the development and maintenance of professional office facilities; to designate those uses and services deemed appropriate and proper for location and development within said zoning district; and to establish such development standards and provisions as are appropriate to ensure proper development and functioning of uses within the district. This district includes those uses formerly designated professional commercial.

(B) Permitted Principal Uses and Structures. The following principal uses and structures are permitted:

(1) Office for administrative, business, or professional use, barber or beauty shop, but not including the sale or storage of merchandise except where clearly incidental to and an accessory component of the rendering of professional services.

(2) Studio for professional work of any form of fine arts or performing arts, but not including the sale or storage of merchandise except where clearly incidental to, and an accessory component of, the rendering of professional services.

(3) Enclosed assembly area 3,000 square feet or less, with or without an alcoholic beverage license for on premises consumption of alcoholic beverages, in accordance with Chapter 110.

(4) One dwelling unit contained within the development which is incidental to and designed as an integral part of the principal structure.

(C) Special Exception Uses. The following uses may be permitted only following the review and specific approval thereof by the City Council:

(1) Any building exceeding thirty-five (35) feet in height.

(2) Model home centers.

(3) Enclosed assembly area over 3,000 square feet, with or without an alcoholic beverage license for on premises consumption of alcoholic beverages, in accordance with Chapter 110.

(4) Any use set forth in subsection (B): "Permitted Principal Uses and Structures" that include drive-through service.

(D) Accessory Uses. As set forth within section 158.217.

(E) Minimum Lot Requirements. Twenty thousand (20,000) square feet and a minimum width of one hundred (100) feet. More than one (1) permitted or special exception use may be located upon the lot as part of a totally-designed development to be maintained under single ownership. Properties located within conversion areas as defined by this chapter shall meet the requirements contained within the City of Port St. Lucie Land Use Conversion Manual.

(F) Maximum Building Coverage. Forty (40) percent, provided that the combined area coverage of all impervious surfaces shall not exceed eighty (80) percent.

(G) Maximum Building Height. Thirty-five (35) feet, except for the ROI (Residential, office and institutional) conversion area as identified in the City of Port St. Lucie Land Use Conversion Manual, lying between Airoso Boulevard and U.S. #1 where the maximum building height shall be one (1) story. (See subsection 158.174(E) for height variations allowed through PUD zoning.)

Minimum Building Size and Minimum Living Area. Commercial and office buildings shall have a minimum total gross floor area of one thousand two hundred (1,200) square feet. Apartment-type unit six-hundred (600) square feet.

(I) Setback Requirements and Landscaping.

(1) **Front Yard.** Each lot shall have a front yard with a building setback line of twenty-five (25) feet.

(2) **Side Yards.** Each lot shall have two (2) side yards, each of which shall have a building setback line of ten (10) feet. A building setback line of twenty-five (25) feet shall be required when the yard adjoins a residential use or a public right-of-way.

(3) **Rear Yard.** Each lot shall have a rear yard with a building setback line of ten (10) feet. A building setback line of twenty-five (25) feet shall be required when the yard adjoins a residential use or a public right-of-way.

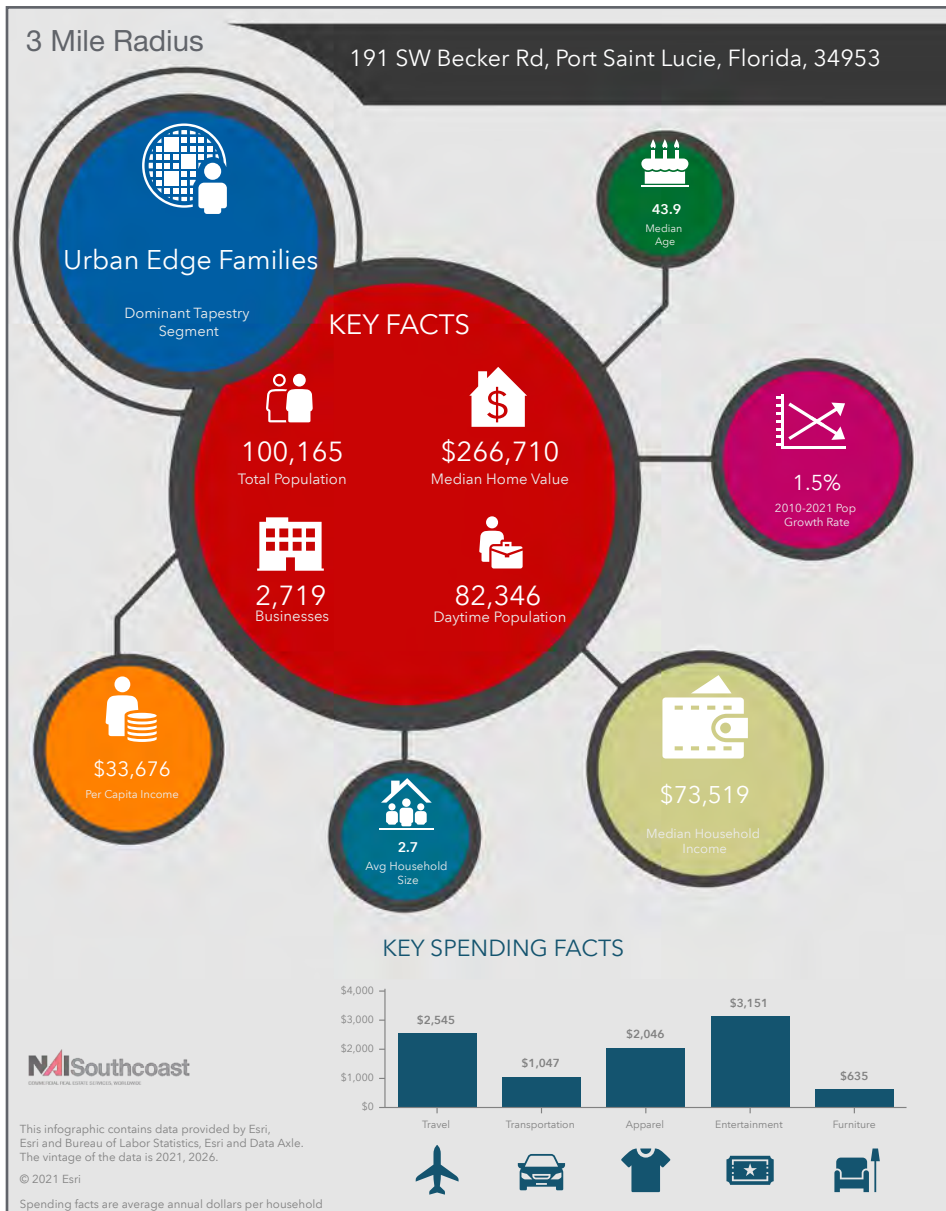
(4) **Landscaping Requirements.** Landscaping and buffering requirements are subject to Chapter 154. All mechanical equipment shall be screened from property zoned residential. This screening shall be designed as both a visual barrier and a noise barrier.

(J) Off-Street Parking and Service Requirements. As set forth in section 158.221.

(K) Site Plan Review. All permitted and special exception uses shall be subject to the provisions of sections 158.235 through 158.245.

(Ord. No. 98-84, § 1, 3-22-99; Ord. No. 02-124, § 1, 11-12-02; Ord. No. 06-81, § 1, 8-14-06; Ord. No. 11-79, § 1(Exh. A), 11-14-11; Ord. No. 12-09, § 1(Exh. A), 3-12-12; Ord. No. 15-85, § 1, 12-7-15)

2021 Demographics



Population

- 1 Mile 4,301
- 3 Mile: 33,688
- 5 Mile: 100,165

Average Household Income

- 1 Mile \$80,489
- 3 Mile: \$91,217
- 5 Mile: \$90,458

Median Age

- 1 Mile 36.7
- 3 Mile: 41.3
- 5 Mile: 43.9

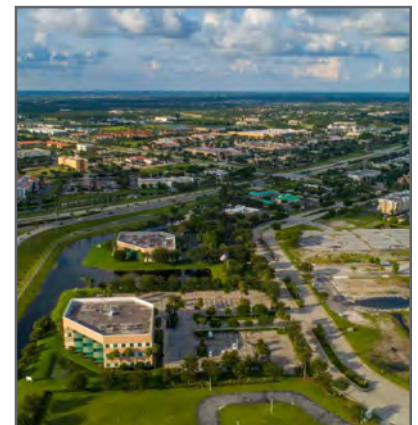
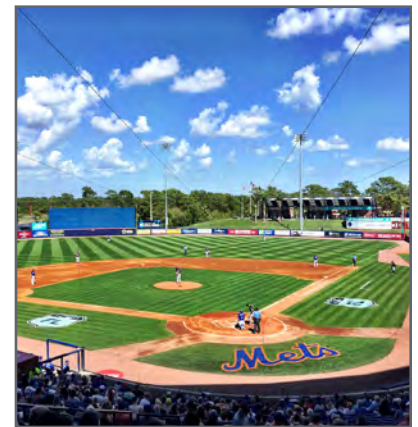
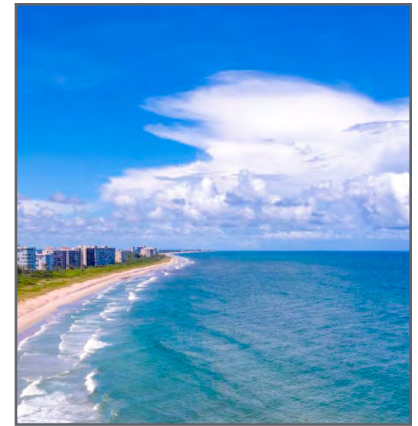


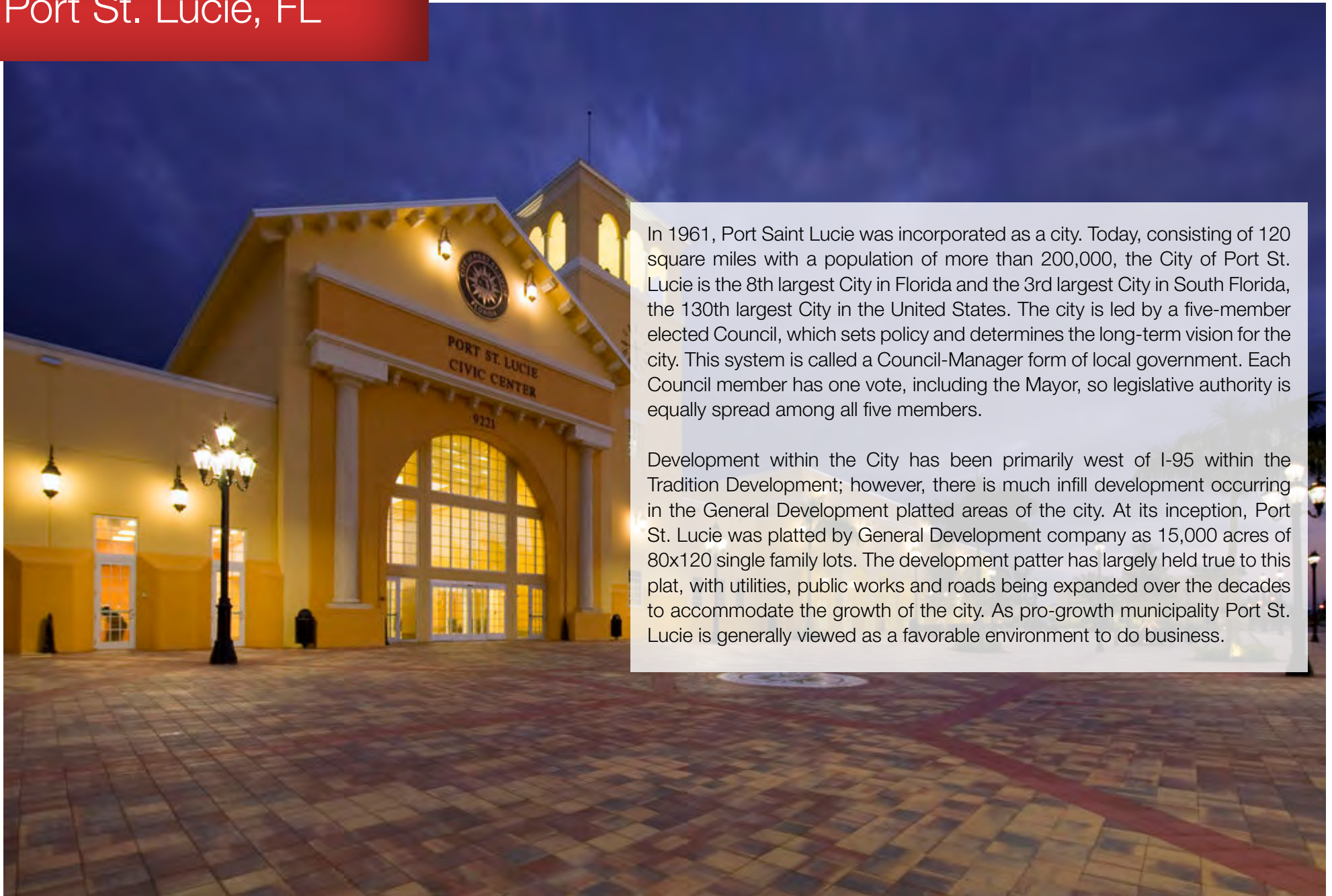
St. Lucie County, FL

Extensive, dependable transportation and easy access is the key to growth, and St. Lucie County has both in abundance. Interstate Highway 95 and U.S. Highway 1 provide easy access to the country's east coast, from Key West to Maine. The Florida Turnpike stretches from just south of Miami through northern-central Florida, while State Road 70 runs from U.S. Highway 1 in Fort Pierce west to Bradenton, Florida. St. Lucie County offers a plethora of transportation linkages which include rail, a custom-serviced international airport, and a deep-water port – all of which enable easy access to all St. Lucie County has to offer. The St. Lucie County International Airport is also one of the busiest general aviation airports in the state.

The county has a population of over 328,000 and has experienced growth of over 18% since 2010. The area economy is a blend of emerging life science R&D with traditional manufacturing, agriculture, tourism and services. St. Lucie County's natural resources are enviable, with more than 21 miles of pristine coastline and beaches, coral reefs, more than 20,000 acres of public parks and nature preserves, and miles of rivers and waterways.. The area boasts over 20 public and semiprivate courses, with prices ranging from upscale to very affordable, and the great weather allows for play all year round. St. Lucie County is home to Clover Park in Port St. Lucie, the Spring training home of the New York Mets.

The county is host to Indian River State College, an institution that has won national recognition for excellence and innovation applied toward training and education. St. Lucie County boasts 39 schools with a total of 41,409 students and 5,205 staff. The Economic Development Council of St. Lucie County (EDC) is a non-profit organization with the goal of creating more, high-paying jobs for residents by working in concert on agreed upon strategies to promote the retention and expansion of existing businesses, as well as attracting new ones to St. Lucie County. Workers employed in St. Lucie County are clustered in the Health Care and Social Assistance (18.4%), and Retail Trade (11.9%) industries. Workers living in St. Lucie County are concentrated in the Health Care and Social Assistance (16.3%), and Retail Trade (14.1%) industries. Since 2017 the EDC has facilitated 40 expansion and new attraction job creating projects with a net growth of building area of approximately 6,500,000 square feet.





In 1961, Port Saint Lucie was incorporated as a city. Today, consisting of 120 square miles with a population of more than 200,000, the City of Port St. Lucie is the 8th largest City in Florida and the 3rd largest City in South Florida, the 130th largest City in the United States. The city is led by a five-member elected Council, which sets policy and determines the long-term vision for the city. This system is called a Council-Manager form of local government. Each Council member has one vote, including the Mayor, so legislative authority is equally spread among all five members.

Development within the City has been primarily west of I-95 within the Tradition Development; however, there is much infill development occurring in the General Development platted areas of the city. At its inception, Port St. Lucie was platted by General Development company as 15,000 acres of 80x120 single family lots. The development pattern has largely held true to this plat, with utilities, public works and roads being expanded over the decades to accommodate the growth of the city. As pro-growth municipality Port St. Lucie is generally viewed as a favorable environment to do business.

NAI Southcoast

±1.7 Acre Professional Site

FOR SALE

±1.7 ACRES

SW BECKER RD

191 SW Becker Road

Port St. Lucie, Florida 34953

\$649,000

Property Features:

Sale Price:	\$649,000
Jurisdiction:	City of Port St. Lucie
Land Area:	±1.7 Acres
Land Use:	ROI
Zoning:	Professional
Frontage:	595'
Parcel ID:	3420-665-0014-000-3



Stuart Duffin, P. A., SIOR CCIM

Broker Associate
+1 772 579 0370
sduffin@naisouthcoast.com



Carrie Duffin

Sales Associate
+1 772 233 5219
carrie@naisouthcoast.com

NAI Southcoast

100 SW Albany Avenue, 2nd Floor
Stuart, Florida 34994
+1 772 286 6292
www.naisouthcoast.com