

FOR SALE

9,538 SF on 1.21 AC

WAREHOUSE with LARGE YARD



## 15011 La Palma Dr

Chino, California 91710

### Property Highlights

- Freestanding 9,538 SF Warehouse on 1.21 Acre Lot
- 100% 6" Concrete Fenced Yard with Two (2) in ground Sump Pumps | Water & Electrical distributed throughout Yard
- +/- 868 SF Office | Approximately 850 SF Bonus Finished Mezzanine
- Two (2) Grade Level Doors (16'x14')(14'x14')
- 16' Minimum Clearance
- LED Motion Sensor Warehouse Lighting
- Fully Sprinklered (.21/1,500)
- M2 Zoning per City of Chino



### For More Information

**Justin Kuehn**

O: 909 243 7627

jkuehn@naicapital.com | CalDRE #01966182

**Richard Lee, SIOR**

O: 909 243 7601

rlee@naicapital.com | CalDRE #01757870

**Nicholas Chang, CCIM, SIOR**

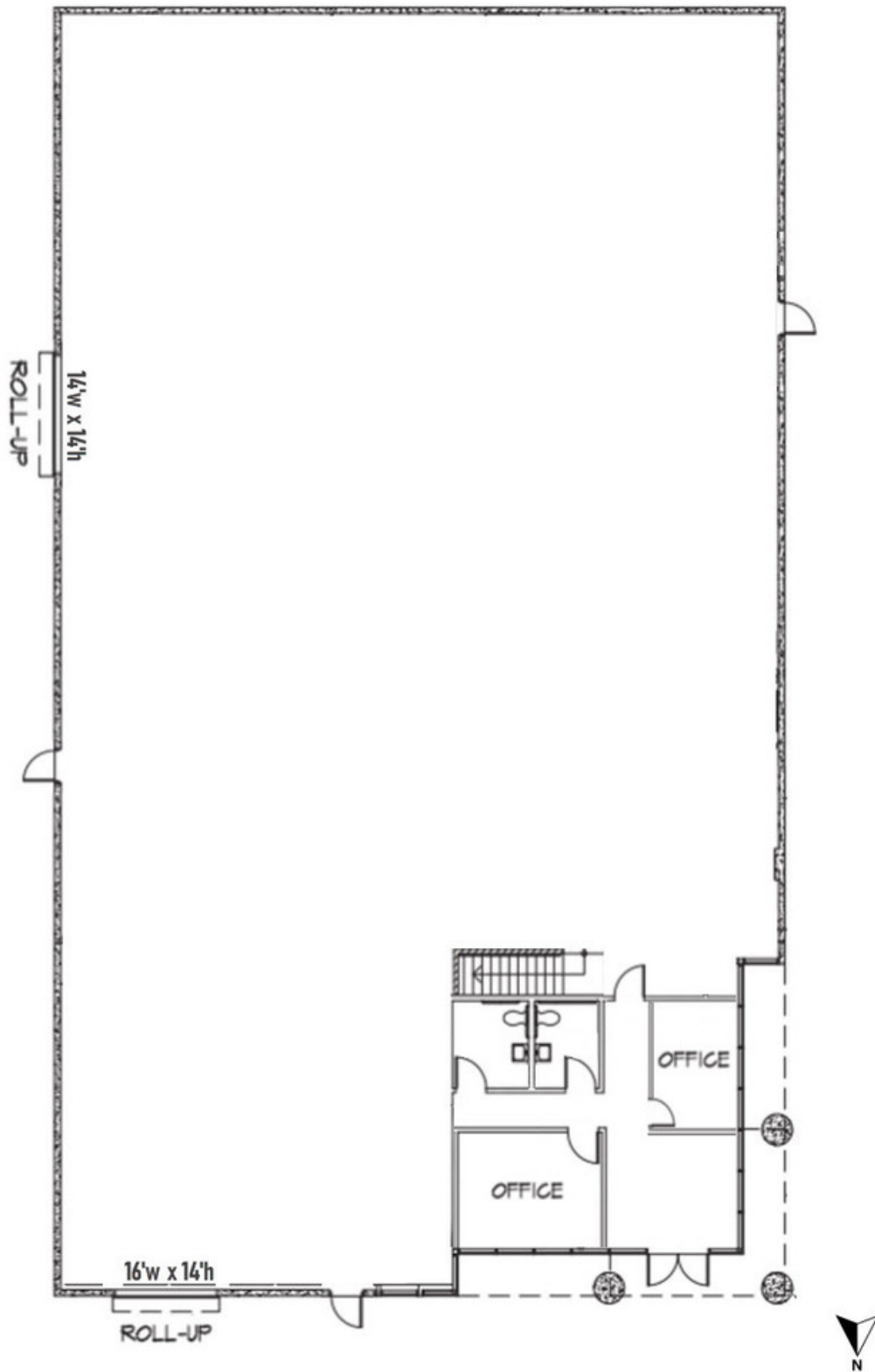
O: 909 243 7614

nchang@naicapital.com | CalDRE #01344844

FOR SALE

9,538 SF on 1.21 AC

WAREHOUSE with LARGE YARD





FOR SALE

9,538 SF on 1.21 AC

WAREHOUSE with LARGE YARD



No warranty, express or implied, is made as to the accuracy of the information contained herein. This information is submitted subject to errors, omissions, change of price, rental or other conditions, withdrawal without notice, and is subject to any special listing conditions imposed by our principals. Cooperating brokers, buyers, tenants and other parties who receive this document should not rely on it, but should use it as a starting point of analysis, and should independently confirm the accuracy of the information contained herein through a due diligence review of the books, records, files and documents that constitute reliable sources of the information described herein. Logos are for identification purposes only and may be trademarks of their respective companies. NAI Capital, Inc. CAL DRE Lic. #02130474

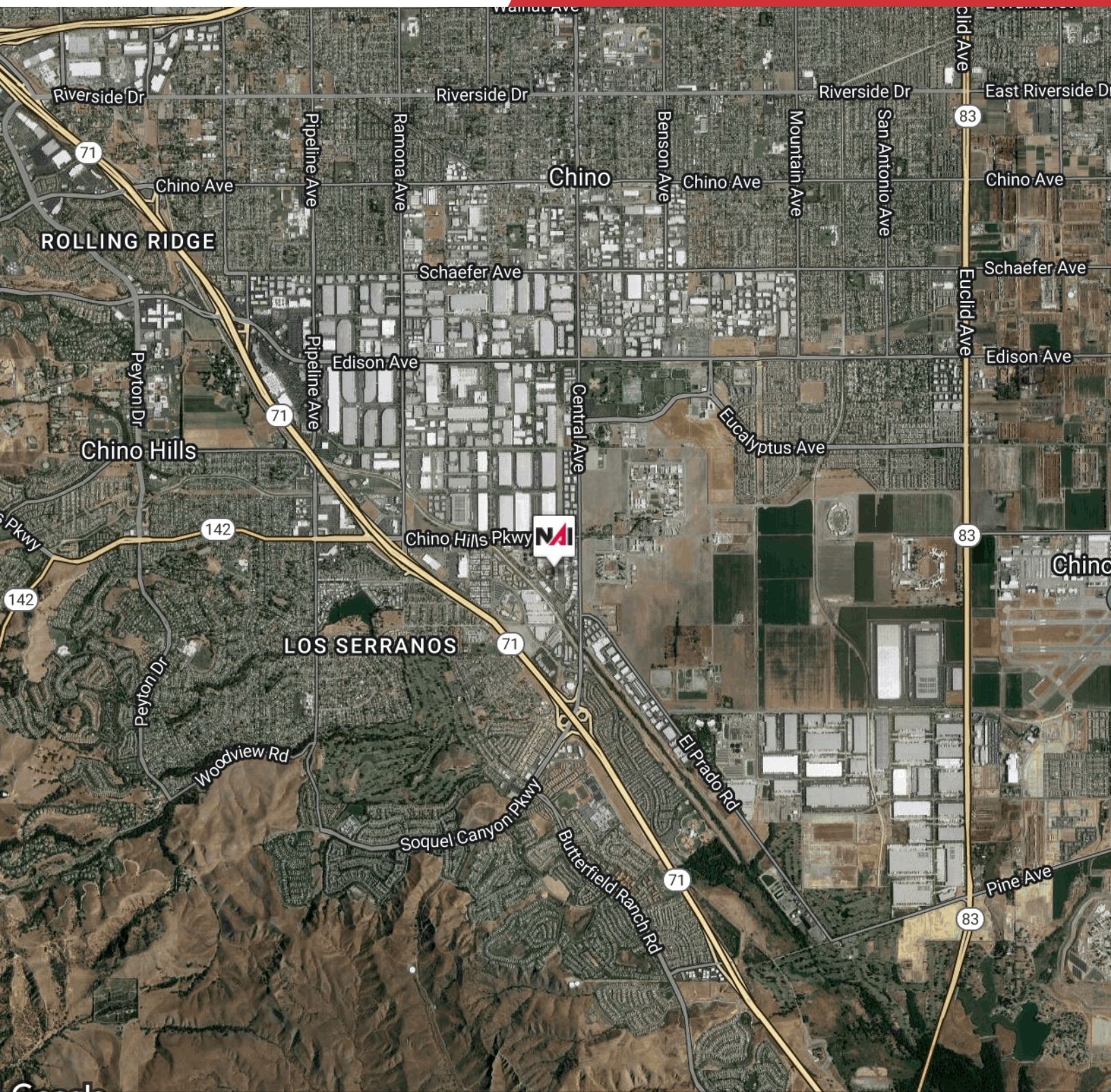
800 N. Haven Ave. #400  
Ontario, CA 91764  
909 945 2339 tel  
[naicapital.com](http://naicapital.com)



FOR SALE

9,538 SF on 1.21 AC

WAREHOUSE with LARGE YARD



Google, Data CSUMB SFML, CA OPC, Landsat / Copernicus, Maxar Technologies, U.S. Geological Survey, USDA/FPAC/GEO

No warranty, express or implied, is made as to the accuracy of the information contained herein. This information is submitted subject to errors, omissions, change of price, rental or other conditions, withdrawal without notice, and is subject to any special listing conditions imposed by our principals. Cooperating brokers, buyers, tenants and other parties who receive this document should not rely on it, but should use it as a starting point of analysis, and should independently confirm the accuracy of the information contained herein through a due diligence review of the books, records, files and documents that constitute reliable sources of the information described herein. Logos are for identification purposes only and may be trademarks of their respective companies. NAI Capital, Inc. CAL DRE Lic. #02130474

800 N. Haven Ave. #400  
Ontario, CA 91764  
909 945 2339 tel  
[naicapital.com](http://naicapital.com)