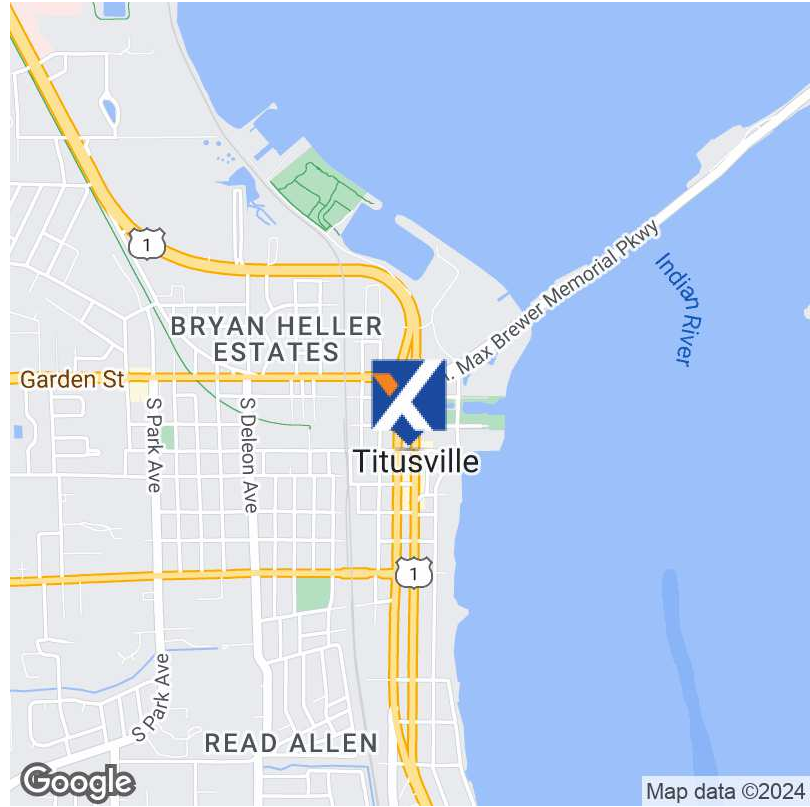


FOR LEASE

Restaurant/Retail in the Historic District



OFFERING SUMMARY

| | |
|------------------|-----------------------------|
| Lease Rate: | \$20.00 - 24.00 SF/yr (NNN) |
| Building Size: | 22,545 SF |
| Available SF: | 1,472 - 9,455 SF |
| Number of Units: | 5 |
| Year Built: | 1924 |
| Renovated: | 2022 |
| Zoning: | DMU - Downtown Mixed Use |

PROPERTY OVERVIEW

READY FOR RETAIL and RESTAURANT.
NOW LEASING 1,472 - 9,455 total sq. feet

BE CREATIVE! Launch Now is the comprehensive renovation of two historic properties, located in the heart of Florida's booming "Space Coast" and just a 13-minute drive to the north gate of Kennedy Space Center (KSC). The new owners are founders of Red Canyon Software, Inc. An aerospace engineering company with contracts at Kennedy Space Center and other NASA centers across the country.

Both buildings were originally built in 1924 and are "contributing" to the National Registry of Historic Places; every square inch is being restored and updated to create modern, clean, creative, and flexible space.

2,900 SF (1st floor of the bank building)
1,472 - 6,555 SF (1st floor of the apartment building)

The bank is graced by a lovely, curved staircase and beautiful French chandelier. Formal events have been held at this iconic property for decades! Wedding and prom photos on the grand staircase. Masquerade parties. It's even rumored that Al Capone handled some of his business here! Listed on the National Historic Registry in the Historic District. Restaurant, professional offices, a wine and tapas bar, a music venue - the possibilities are endless!

Two entrances - Two vintage vaults - Massive open area with 20' + ceiling heights - THIS

Holly Carver

321.243.8967
Holly@RocketCityRE.com

Lisa Earnhardt

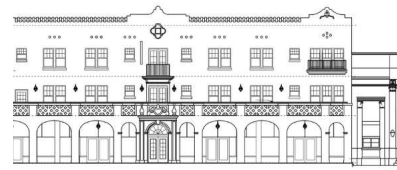
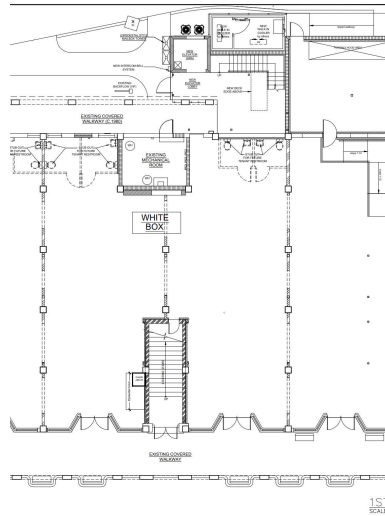
321.291.6601
Lisa@RocketCityRE.com

expTM
COMMERCIAL

ROCKET CITY
COMMERCIAL **exp**
COMMERCIAL

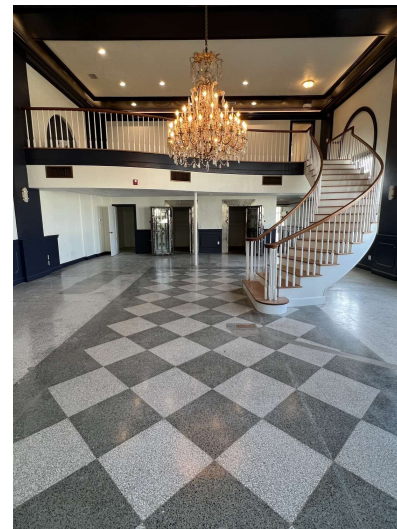
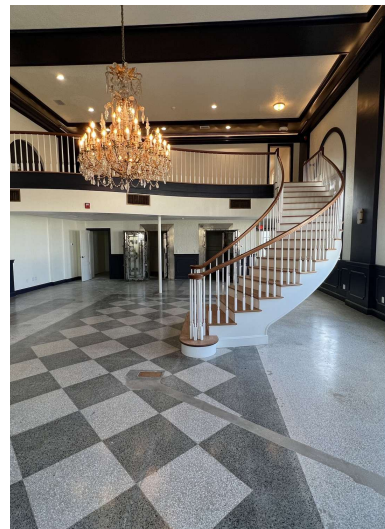
eXp Commercial, LLC, its direct and indirect parents and their subsidiaries (together, "We") obtained the information above from sources believed to be reliable, however, We have not verified its accuracy and make no guarantee, warranty or representation, expressed or implied, about such information. The information contained above is submitted subject to the possibility of errors, omissions, price changes, rental or other conditions, prior sale, lease or financing, or withdrawal without notice. Any projections, opinions, assumptions or estimates of the information contained above or provided in connection therewith, either expressed or implied, are for example only, and they may not represent current or future performance of the subject property. You, together with your tax and legal advisors, should conduct your own thorough investigation of the subject property and potential investment.

FOR LEASE | Restaurant/Retail in the Historic District

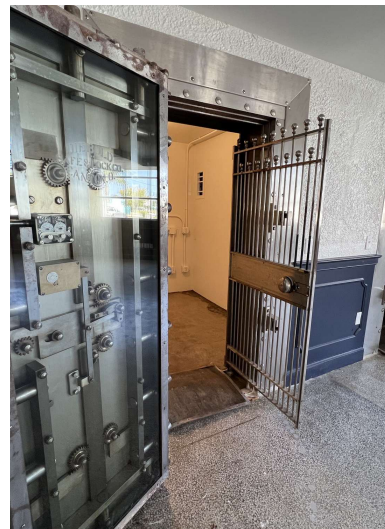


FRONT ELEVATION

HISTORIC WALK HOTEL AND BANK BUILDINGS



"Interior of bank - 1963"



Holly Carver

321.243.8967

Holly@RocketCityRE.com

Lisa Earnhardt

321.291.6601

Lisa@RocketCityRE.com

exp
COMMERCIAL

ROCKET CITY
COMMERCIAL **exp**

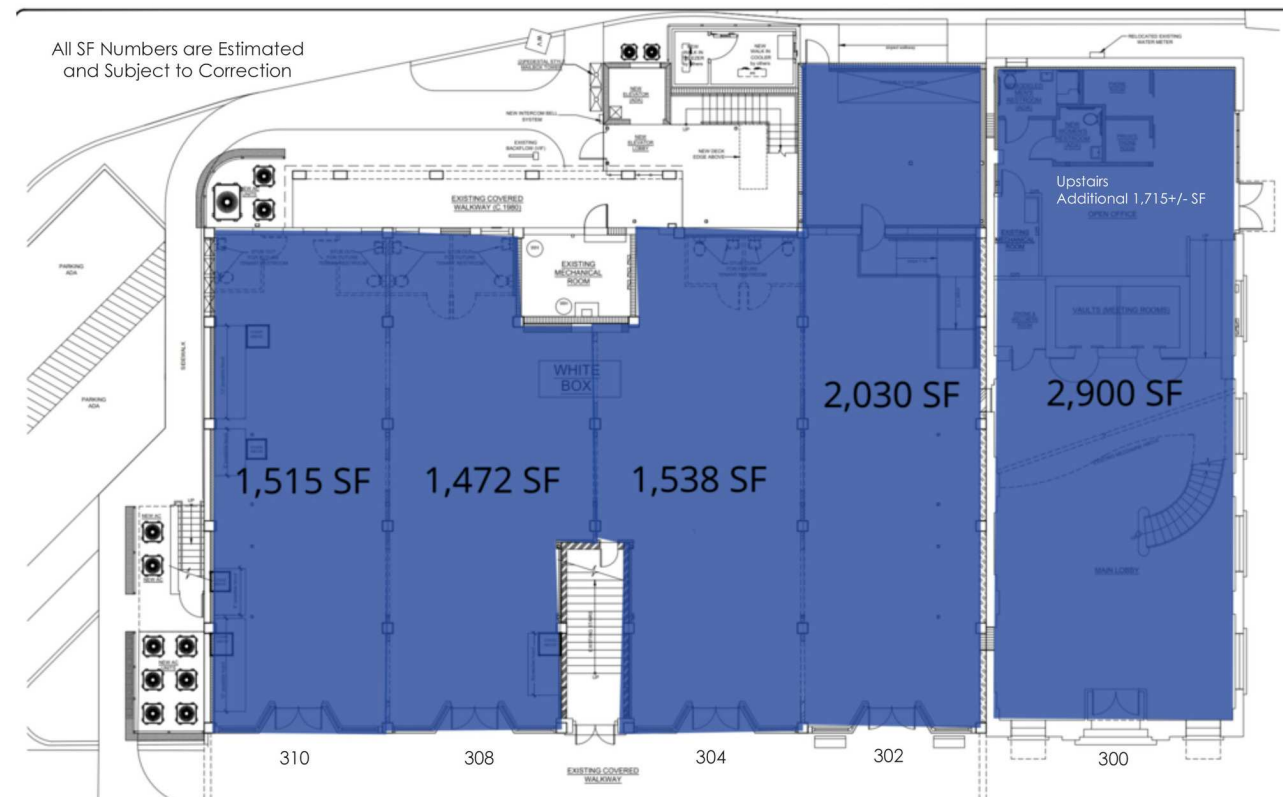
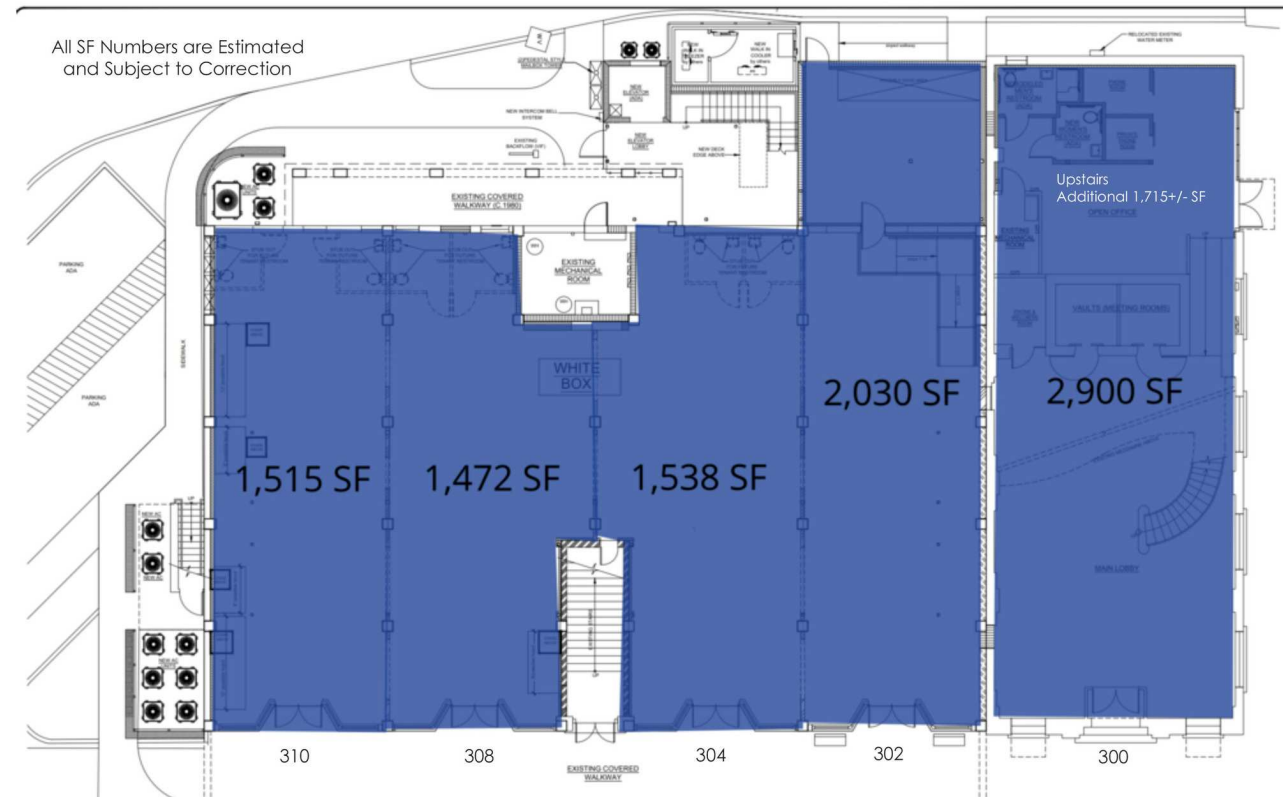
eXp Commercial, LLC, its direct and indirect parents and their subsidiaries (together, "We") obtained the information above from sources believed to be reliable, however, We have not verified its accuracy and make no guarantee, warranty or representation, expressed or implied, about such information. The information contained above is submitted subject to the possibility of errors, omissions, price changes, rental or other conditions, prior sale, lease or financing, or withdrawal without notice. Any projections, opinions, assumptions or estimates of the information contained above or provided in connection therewith, either expressed or implied, are for example only, and they may not represent current or future performance of the subject property. You, together with your tax and legal advisors, should conduct your own thorough investigation of the subject property and potential investment.

Restaurant/Retail in the Historic District



ExP Commercial, LLC, its direct and indirect parents and their subsidiaries (together, "We") obtained the information above from sources believed to be reliable, however, We have not verified its accuracy and make no guarantee, warranty or representation, expressed or implied, about such information. The information contained above is submitted subject to the possibility of errors, omissions, price changes, rental or other conditions, prior sale, lease or financing, or withdrawal without notice. Any projections, opinions, assumptions or estimates of the information contained above or provided in connection therewith, either expressed or implied, are for example only, and they may not represent current or future performance of the subject property. You, together with your tax and legal advisors, should conduct your own thorough investigation of the subject property and potential investment.

FOR LEASE | Restaurant/Retail in the Historic District



Holly Carver

321.243.8967

Holly@RocketCityRE.com

Lisa Earnhardt

321.291.6601

Lisa@RocketCityRE.com

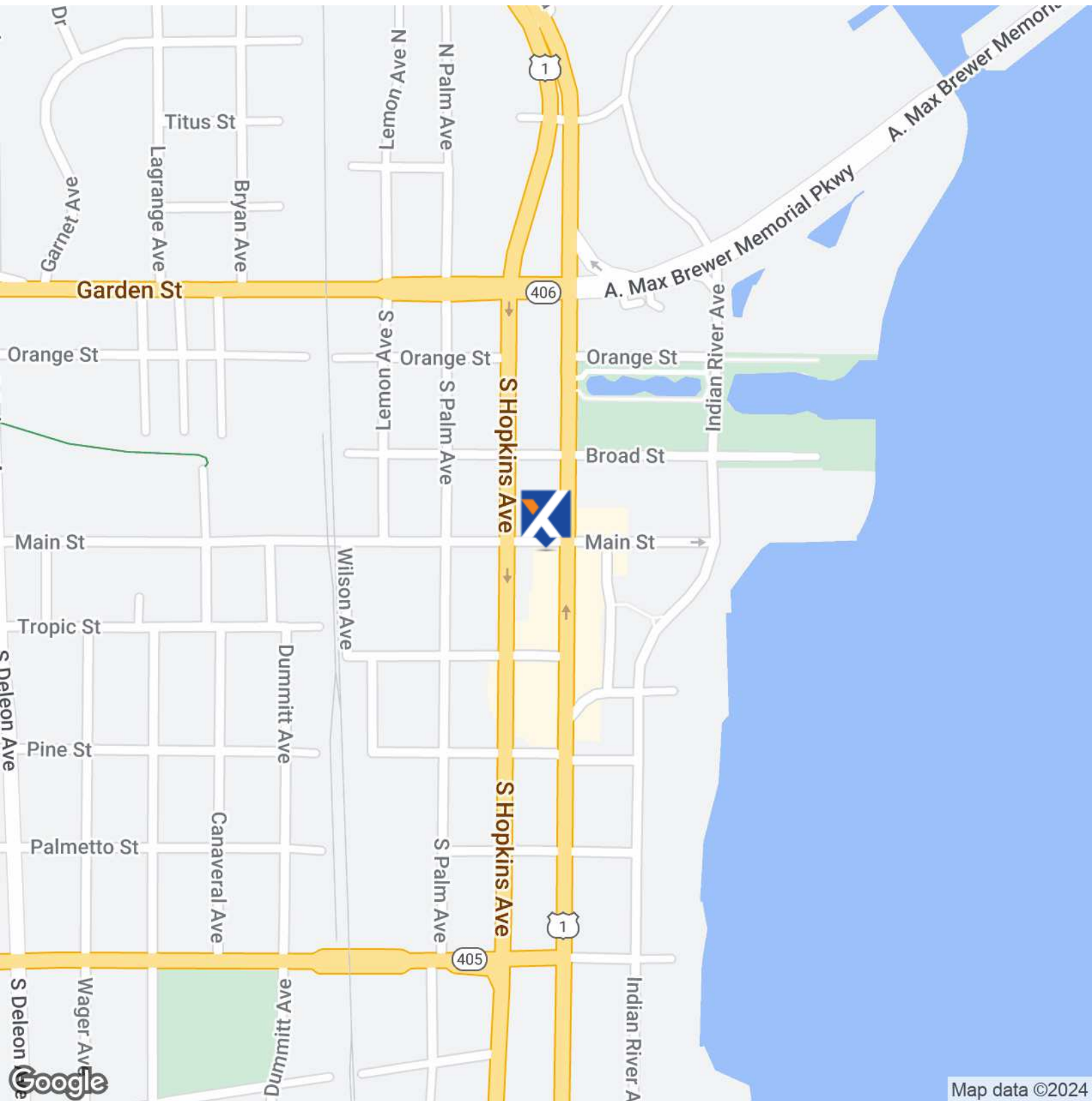
expTM
COMMERCIAL

ROCKET CITY
COMMERCIAL **exp**
COMMERCIAL

eXp Commercial, LLC, its direct and indirect parents and their subsidiaries (together, "We") obtained the information above from sources believed to be reliable, however, We have not verified its accuracy and make no guarantee, warranty or representation, expressed or implied, about such information. The information contained above is submitted subject to the possibility of errors, omissions, price changes, rental or other conditions, prior sale, lease or financing, or withdrawal without notice. Any projections, opinions, assumptions or estimates of the information contained above or provided in connection therewith, either expressed or implied, are for example only, and they may not represent current or future performance of the subject property. You, together with your tax and legal advisors, should conduct your own thorough investigation of the subject property and potential investment.

FOR LEASE

Restaurant/Retail in the Historic District



Holly Carver

321.243.8967

Holly@RocketCityRE.com

Lisa Earnhardt

321.291.6601

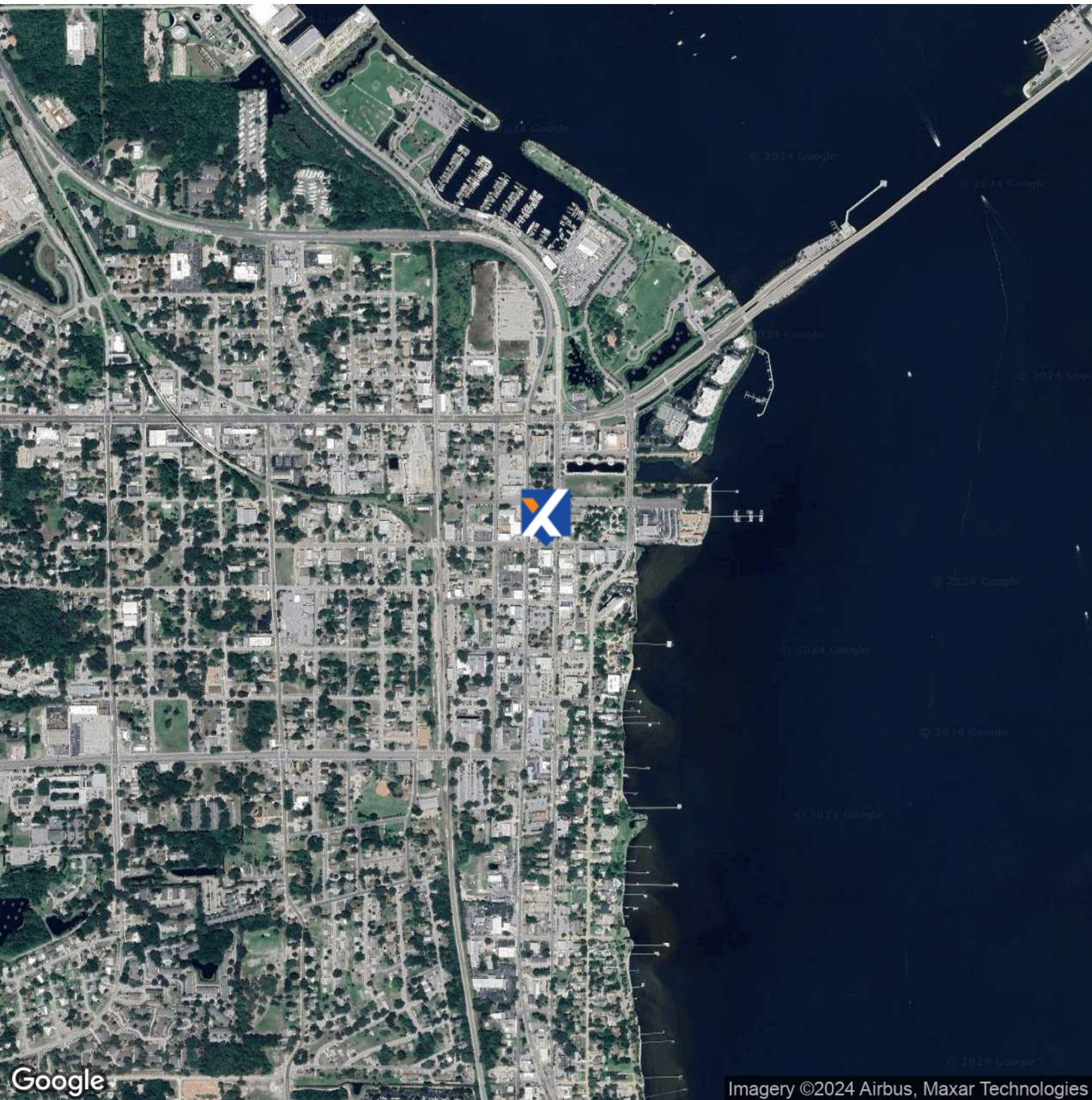
Lisa@RocketCityRE.com

expTM
COMMERCIAL

ROCKET CITY
COMMERCIAL **exp**
COMMERCIAL

eXp Commercial, LLC, its direct and indirect parents and their subsidiaries (together, "We") obtained the information above from sources believed to be reliable, however, We have not verified its accuracy and make no guarantee, warranty or representation, expressed or implied, about such information. The information contained above is submitted subject to the possibility of errors, omissions, price changes, rental or other conditions, prior sale, lease or financing, or withdrawal without notice. Any projections, opinions, assumptions or estimates of the information contained above or provided in connection therewith, either expressed or implied, are for example only, and they may not represent current or future performance of the subject property. You, together with your tax and legal advisors, should conduct your own thorough investigation of the subject property and potential investment.

FOR LEASE | Restaurant/Retail in the Historic District



Holly Carver

321.243.8967

Holly@RocketCityRE.com

Lisa Earnhardt

321.291.6601

Lisa@RocketCityRE.com

expTM
COMMERCIAL

ROCKET CITY
COMMERCIAL **exp**
COMMERCIAL

eXp Commercial, LLC, its direct and indirect parents and their subsidiaries (together, "We") obtained the information above from sources believed to be reliable, however, We have not verified its accuracy and make no guarantee, warranty or representation, expressed or implied, about such information. The information contained above is submitted subject to the possibility of errors, omissions, price changes, rental or other conditions, prior sale, lease or financing, or withdrawal without notice. Any projections, opinions, assumptions or estimates of the information contained above or provided in connection therewith, either expressed or implied, are for example only, and they may not represent current or future performance of the subject property. You, together with your tax and legal advisors, should conduct your own thorough investigation of the subject property and potential investment.

FOR LEASE

Restaurant/Retail in the Historic District



HOLLY CARVER

Broker Associate

C: 321.243.8967

Holly@RocketCityRE.com

FL #3351454



LISA EARNHARDT

Sales and Leasing Associate

C: 407.929.8009

Lisa@RocketCityRE.com

FL # SL3439689

Holly Carver

321.243.8967

Holly@RocketCityRE.com

Lisa Earnhardt

321.291.6601

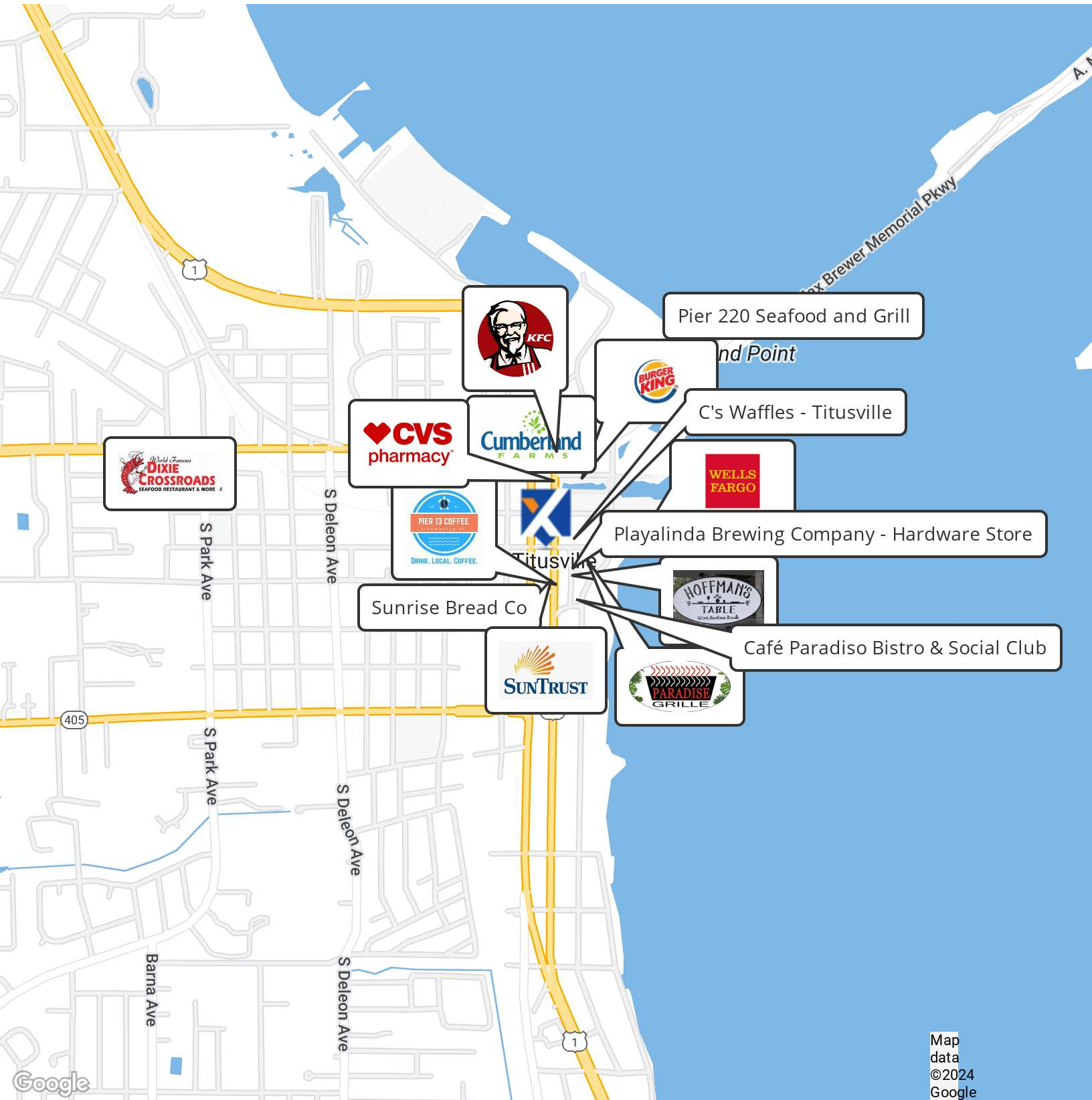
Lisa@RocketCityRE.com



eXp Commercial, LLC, its direct and indirect parents and their subsidiaries (together, "We") obtained the information above from sources believed to be reliable, however, We have not verified its accuracy and make no guarantee, warranty or representation, expressed or implied, about such information. The information contained above is submitted subject to the possibility of errors, omissions, price changes, rental or other conditions, prior sale, lease or financing, or withdrawal without notice. Any projections, opinions, assumptions or estimates of the information contained above or provided in connection therewith, either expressed or implied, are for example only, and they may not represent current or future performance of the subject property. You, together with your tax and legal advisors, should conduct your own thorough investigation of the subject property and potential investment.

FOR LEASE

Restaurant/Retail in the Historic District



Holly Carver

321.243.8967
Holly@RocketCityRE.com

Lisa Earnhardt

321.291.6601
Lisa@RocketCityRE.com

expTM
COMMERCIAL

ROCKET CITY
COMMERCIAL **exp**
COMMERCIAL

eXp Commercial, LLC, its direct and indirect parents and their subsidiaries (together, "We") obtained the information above from sources believed to be reliable, however, We have not verified its accuracy and make no guarantee, warranty or representation, expressed or implied, about such information. The information contained above is submitted subject to the possibility of errors, omissions, price changes, rental or other conditions, prior sale, lease or financing, or withdrawal without notice. Any projections, opinions, assumptions or estimates of the information contained above or provided in connection therewith, either expressed or implied, are for example only, and they may not represent current or future performance of the subject property. You, together with your tax and legal advisors, should conduct your own thorough investigation of the subject property and potential investment.