

THREE OFFICE BLDGS - WILL DIVIDE FOR SALE

2233 PARK AVE - ENTERPRISE PARK

2233 Park Avenue, Orange Park, FL 32073



SALE PRICE: \$2,500,000

LOT SIZE: 3.0 Acres

BUILDING SIZE: 20,294 SF

BUILDING CLASS: C

ZONING: Professional/Office

MARKET: Jacksonville MSA

SUB MARKET: Orange Park

CROSS STREETS: Milwaukee Ave. And Park Ave



DEMOGRAPHICS

	1 Mile	3 Miles	5 Miles
Total Households:	1,481	14,529	36,590
Total Population:	3,608	37,582	96,989
Average HH Income:	\$67,663	\$82,732	\$85,714

KELLER WILLIAMS FIRST COAST REALTY
151 College Dr,
#14
Orange Park, FL 32065

SANDRA KAHLE, CCIM
Managing Director
O: 904.541.0700
C: 904.838.6446
skahle@kahlecg.com

CYNTHIA MCLAIN, CCIM
Broker Associate
O: 904.541.0700
C: 904.545.4195
cmclain@kahlecg.com



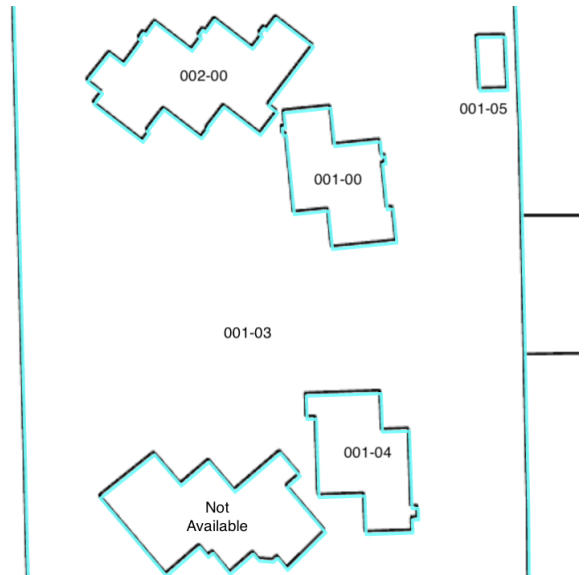
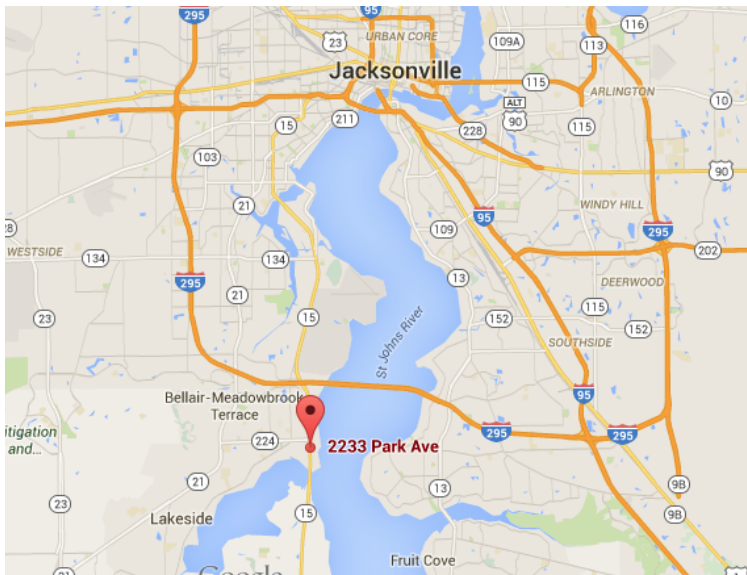
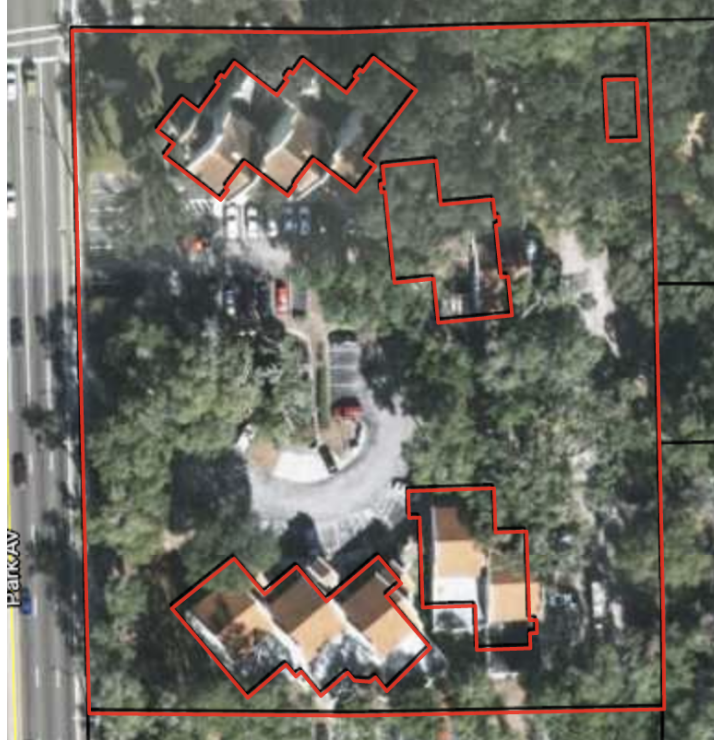
We obtained the information above from sources we believe to be reliable. However, we have not verified its accuracy and make no guarantee, warranty or representation about it. It is submitted subject to the possibility of errors, omissions, change of price, rental or other conditions, prior sale, lease or financing, or withdrawal without notice. We include projections, opinions, assumptions or estimates for example only, and they may not represent current or future performance of the property. You and your tax and legal advisors should conduct your own investigation of the property and transaction.

Each Office Independently Owned and Operated kahlecommercialgroup.com

THREE OFFICE BLDGS - WILL DIVIDE FOR SALE

2233 PARK AVE - ENTERPRISE PARK

2233 Park Avenue, Orange Park, FL 32073



KELLER WILLIAMS FIRST COAST REALTY
151 College Dr,
#14
Orange Park, FL 32065

SANDRA KAHLE, CCIM
Managing Director
O: 904.541.0700
C: 904.838.6446
skahle@kahlecg.com

CYNTHIA MCLAIN, CCIM
Broker Associate
O: 904.541.0700
C: 904.545.4195
cmclain@kahlecg.com



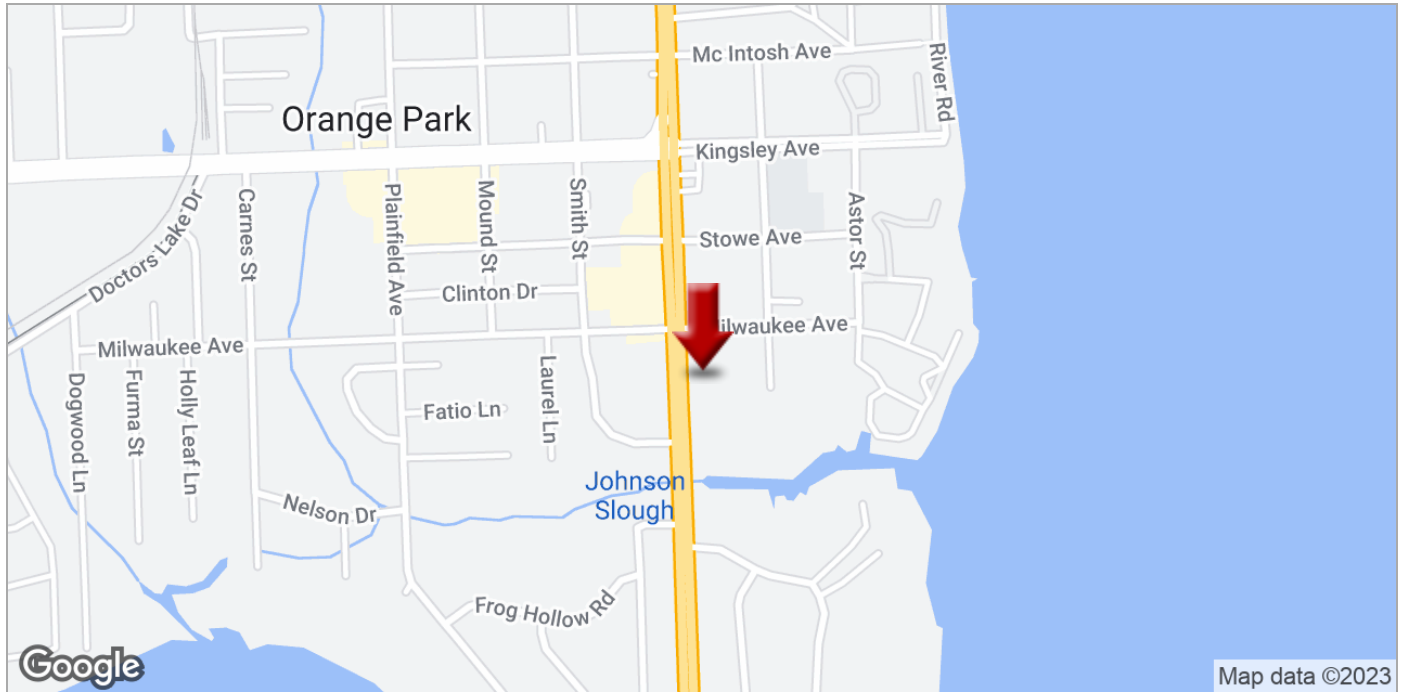
We obtained the information above from sources we believe to be reliable. However, we have not verified its accuracy and make no guarantee, warranty or representation about it. It is submitted subject to the possibility of errors, omissions, change of price, rental or other conditions, prior sale, lease or financing, or withdrawal without notice. We include projections, opinions, assumptions or estimates for example only, and they may not represent current or future performance of the property. You and your tax and legal advisors should conduct your own investigation of the property and transaction.

Each Office Independently Owned and Operated kahlecommercialgroup.com

THREE OFFICE BLDGS - WILL DIVIDE FOR SALE

2233 PARK AVE - ENTERPRISE PARK

2233 Park Avenue, Orange Park, FL 32073



KELLER WILLIAMS FIRST COAST REALTY
151 College Dr,
#14
Orange Park, FL 32065

SANDRA KAHLE, CCIM
Managing Director
O: 904.541.0700
C: 904.838.6446
skahle@kahlecg.com

CYNTHIA MCLAIN, CCIM
Broker Associate
O: 904.541.0700
C: 904.545.4195
cmclain@kahlecg.com



We obtained the information above from sources we believe to be reliable. However, we have not verified its accuracy and make no guarantee, warranty or representation about it. It is submitted subject to the possibility of errors, omissions, change of price, rental or other conditions, prior sale, lease or financing, or withdrawal without notice. We include projections, opinions, assumptions or estimates for example only, and they may not represent current or future performance of the property. You and your tax and legal advisors should conduct your own investigation of the property and transaction.

Each Office Independently Owned and Operated kahlecommercialgroup.com

Traffic Count Map

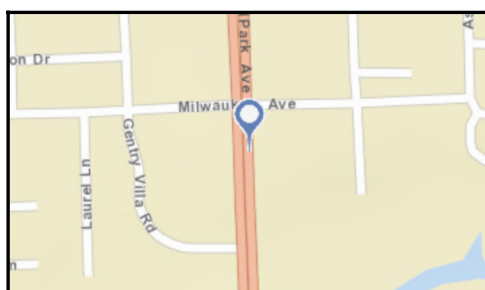
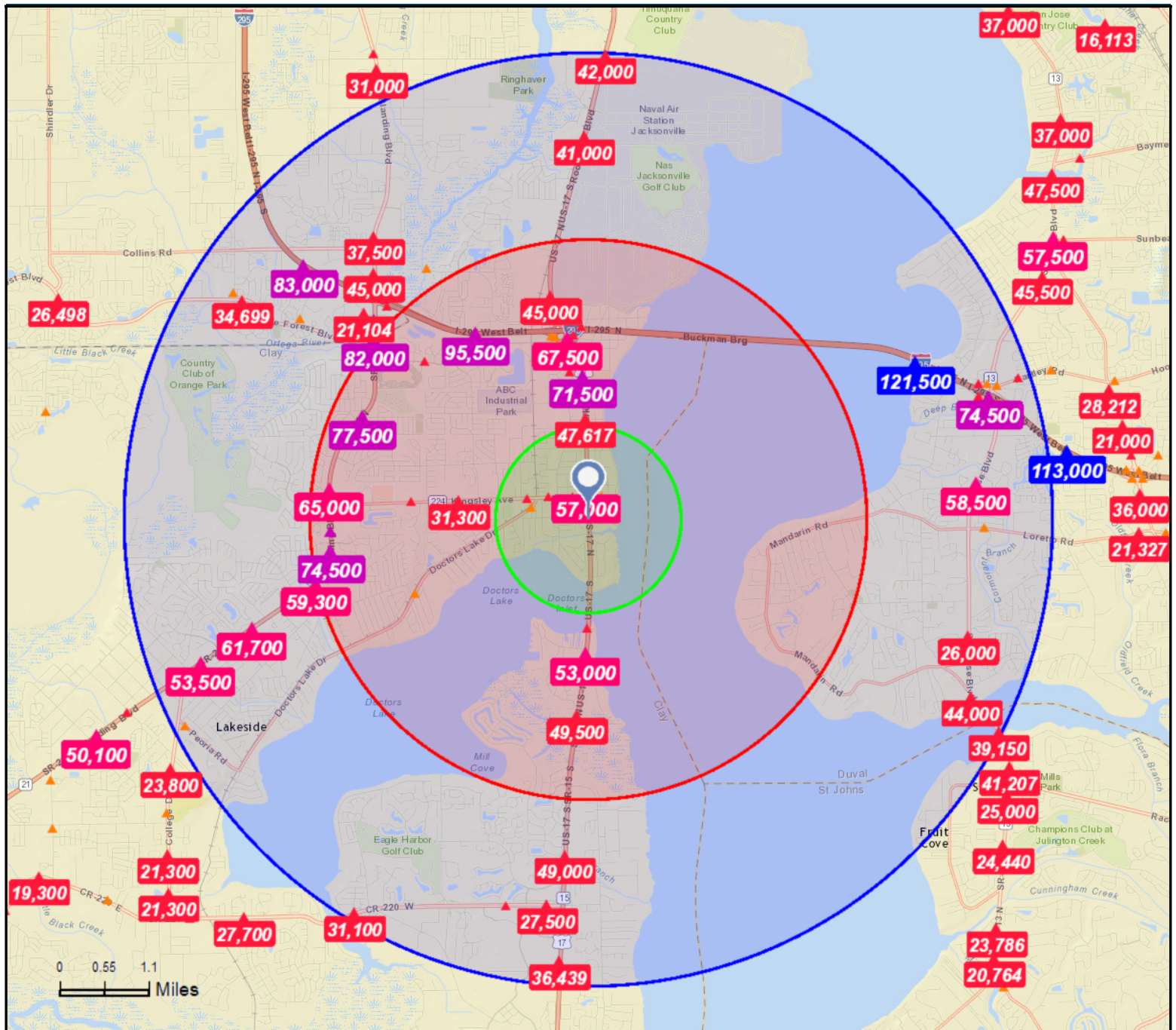
2233 Park Ave, Orange Park, Florida, 32073

Rings: 1, 3, 5 mile radii

Prepared by Esri

Latitude: 30.16217

Longitude: -81.70082



Average Daily Traffic Volume

- ▲ Up to 6,000 vehicles per day
- ▲ 6,001 - 15,000
- ▲ 15,001 - 30,000
- ▲ 30,001 - 50,000
- ▲ 50,001 - 100,000
- ▲ More than 100,000 per day



Source: ©2015 Market Planning Solutions, Inc.

May 10, 2016