

St Lucie West Office Space For Lease



1555 NW St. Lucie West Boulevard
Port St. Lucie, FL 34986

\$20.00/SF NNN

Property Highlights:

- Class B Office Building centrally located near I-95 on major east/west connector road
- Prominent building in established St. Lucie West part of Port St. Lucie, FL
- Ample parking with ingress and egress at light on Central Park and on St. Lucie West Blvd
- Modern Design
- Functional Floor Plan on this 1,964 SF space

For more information:

Stuart Duffin, P.A., SIOR, CCIM

Broker Associate

+1 772 579 0370 • sduffin@naisouthcoast.com

JJ Sanguily

Sales Associate

+1 772 834 3519 • jj@naisouthcoast.com

NO WARRANTY OR REPRESENTATION, EXPRESS OR IMPLIED, IS MADE AS TO THE ACCURACY OF THE INFORMATION CONTAINED HEREIN, AND THE SAME IS SUBMITTED SUBJECT TO ERRORS, OMISSIONS, CHANGE OF PRICE, RENTAL OR OTHER CONDITIONS, PRIOR SALE, LEASE OR FINANCING, OR WITHDRAWAL WITHOUT NOTICE, AND OF ANY SPECIAL LISTING CONDITIONS IMPOSED BY OUR PRINCIPALS NO WARRANTIES OR REPRESENTATIONS ARE MADE AS TO THE CONDITION OF THE PROPERTY OR ANY HAZARDS CONTAINED THEREIN ARE ANY TO BE IMPLIED.

100 SW Albany Avenue, 2nd Floor

Stuart, Florida 34994

+1 772 286 6292

www.naisouthcoast.com

Property Overview



Property Overview

Class B Office Building centrally located for medical or professional office space in St. Lucie West. Ideal for any professional office use.

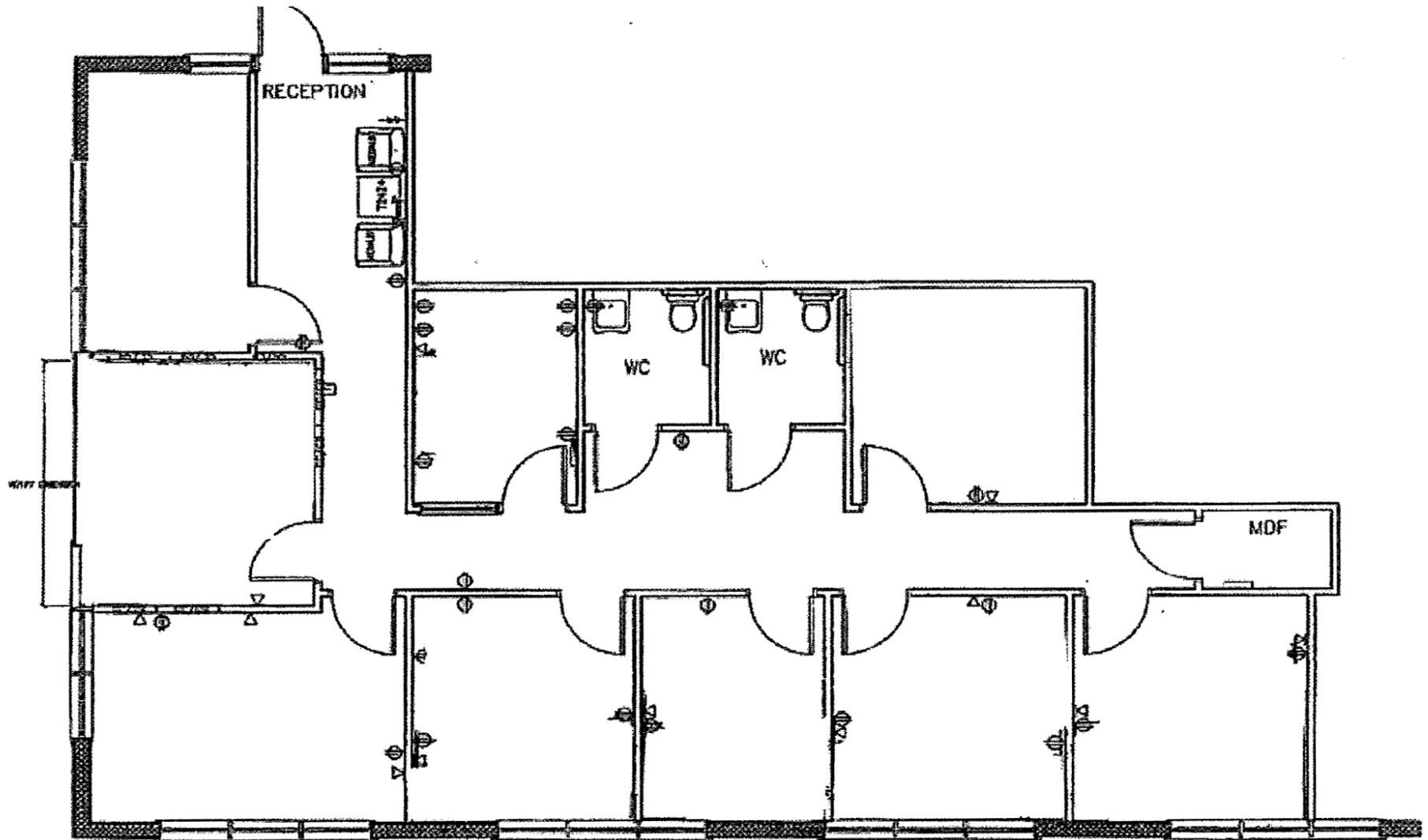
Easy access from St. Lucie West Blvd. at major lighted intersection. Location is a quarter mile from I-95 and one exit from Tradition where rents are much higher.

Property Features

Lease Price:	\$20.00/SF NNN
CAM:	\$8.00/SF NNN
Available Space:	Suite 203, 1,964 SF
Building Type:	Office
RBA:	10,444 SF
Floors:	2
Land Acres:	1.19 Acres
Class:	B
Year Built:	1998
Parking:	80 Spaces; Ratio of 7.66/1,000 SF

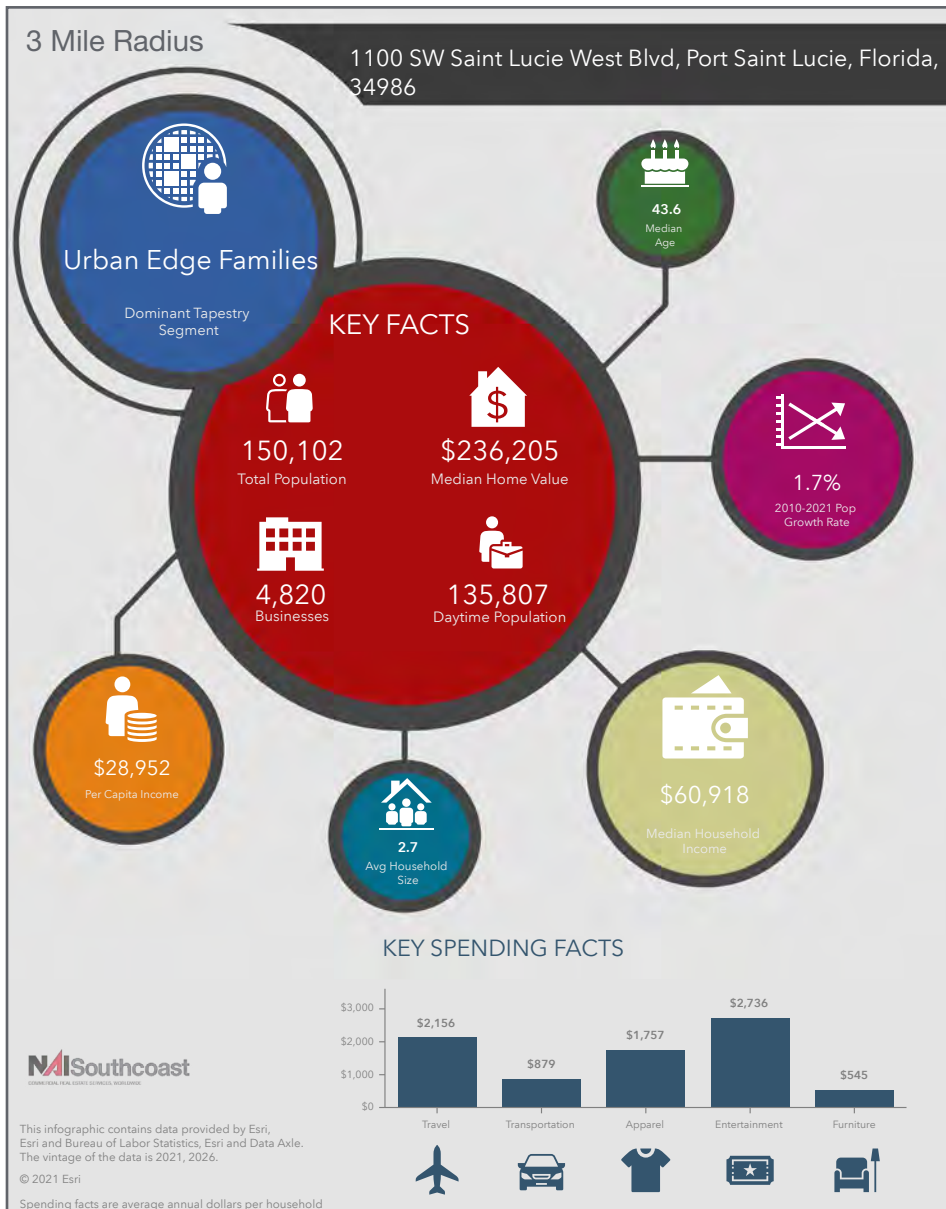
100 SW Albany Avenue, 2nd Floor
Stuart, Florida 34994
+1 772 286 6292
www.naisouthcoast.com

Site Plan



100 SW Albany Avenue, 2nd Floor
Stuart, Florida 34994
+1 772 286 6292
www.naisouthcoast.com

2021 Demographics



2021 Demographics

Population

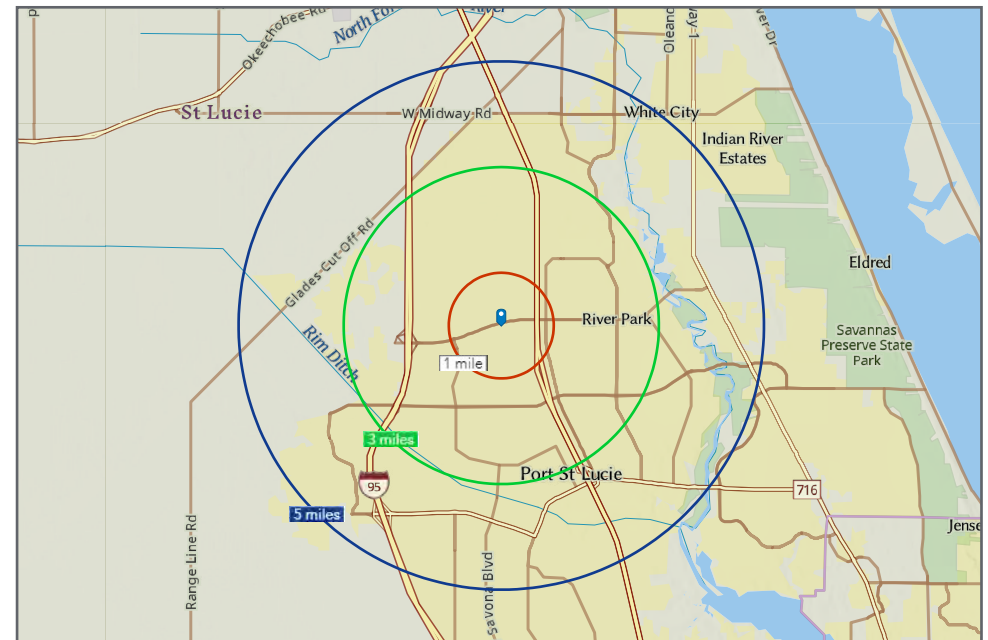
- 1 Mile
- 3 Mile:
- 5 Mile:

Average Household Income

- 1 Mile \$
- 3 Mile: \$
- 5 Mile: \$

Median Age

- 1 Mile
- 3 Mile:
- 5 Mile:

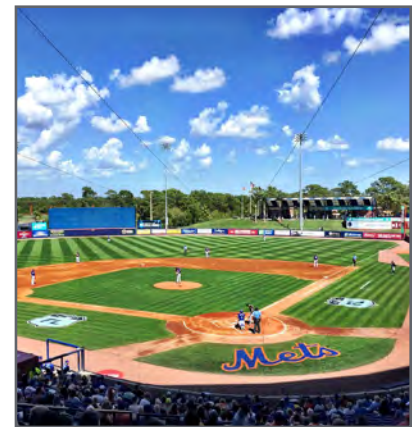


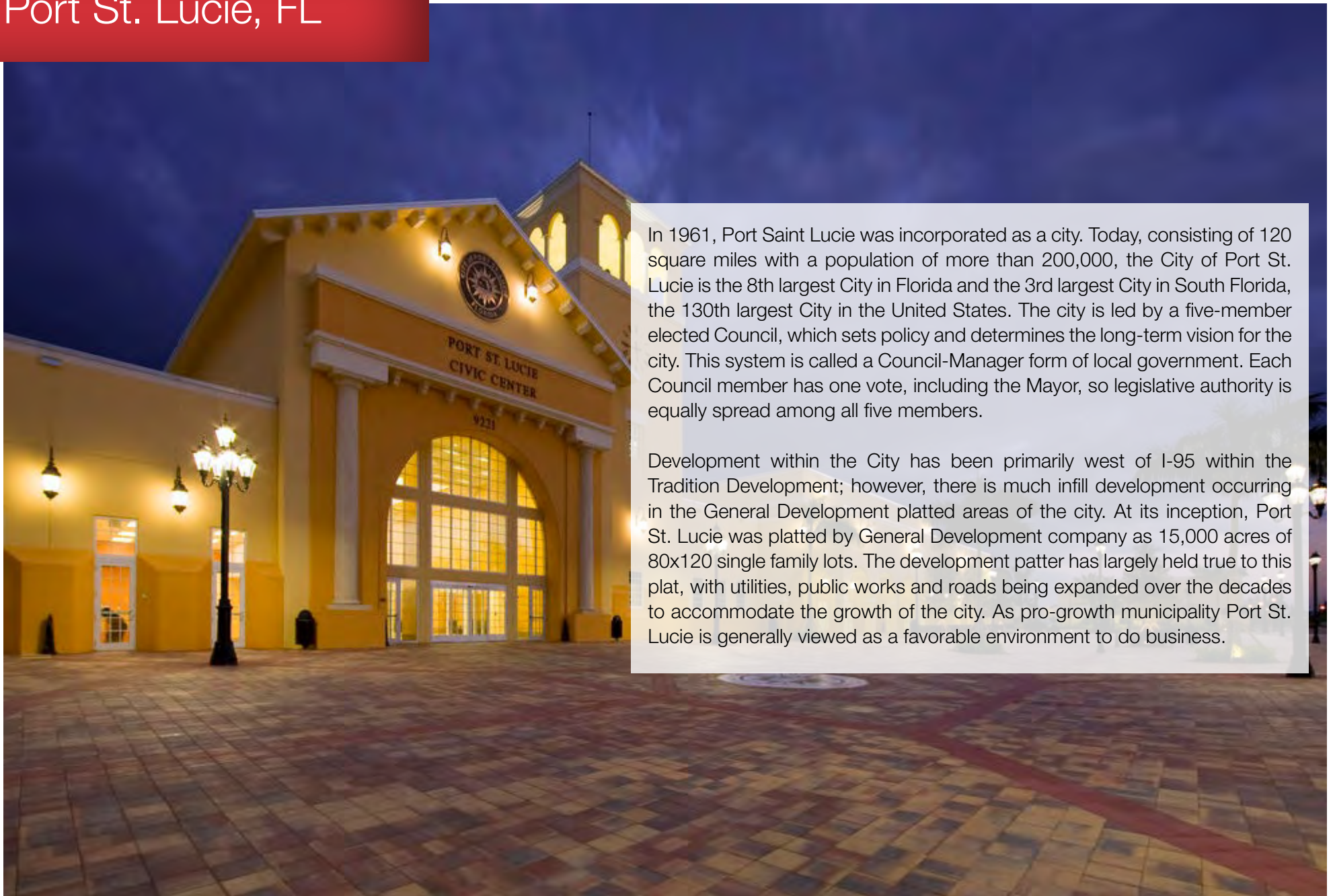
St. Lucie County, FL

Extensive, dependable transportation and easy access is the key to growth, and St. Lucie County has both in abundance. Interstate Highway 95 and U.S. Highway 1 provide easy access to the country's east coast, from Key West to Maine. The Florida Turnpike stretches from just south of Miami through northern-central Florida, while State Road 70 runs from U.S. Highway 1 in Fort Pierce west to Bradenton, Florida. St. Lucie County offers a plethora of transportation linkages which include rail, a custom-serviced international airport, and a deep-water port – all of which enable easy access to all St. Lucie County has to offer. The St. Lucie County International Airport is also one of the busiest general aviation airports in the state.

The county has a population of over 328,000 and has experienced growth of over 18% since 2010. The area economy is a blend of emerging life science R&D with traditional manufacturing, agriculture, tourism and services. St. Lucie County's natural resources are enviable, with more than 21 miles of pristine coastline and beaches, coral reefs, more than 20,000 acres of public parks and nature preserves, and miles of rivers and waterways.. The area boasts over 20 public and semiprivate courses, with prices ranging from upscale to very affordable, and the great weather allows for play all year round. St. Lucie County is home to Clover Park in Port St. Lucie, the Spring training home of the New York Mets.

The county is host to Indian River State College, an institution that has won national recognition for excellence and innovation applied toward training and education. St. Lucie County boasts 39 schools with a total of 41,409 students and 5,205 staff. The Economic Development Council of St. Lucie County (EDC) is a non-profit organization with the goal of creating more, high-paying jobs for residents by working in concert on agreed upon strategies to promote the retention and expansion of existing businesses, as well as attracting new ones to St. Lucie County. Workers employed in St. Lucie County are clustered in the Health Care and Social Assistance (18.4%), and Retail Trade (11.9%) industries. Workers living in St. Lucie County are concentrated in the Health Care and Social Assistance (16.3%), and Retail Trade (14.1%) industries. Since 2017 the EDC has facilitated 40 expansion and new attraction job creating projects with a net growth of building area of approximately 6,500,000 square feet.





In 1961, Port Saint Lucie was incorporated as a city. Today, consisting of 120 square miles with a population of more than 200,000, the City of Port St. Lucie is the 8th largest City in Florida and the 3rd largest City in South Florida, the 130th largest City in the United States. The city is led by a five-member elected Council, which sets policy and determines the long-term vision for the city. This system is called a Council-Manager form of local government. Each Council member has one vote, including the Mayor, so legislative authority is equally spread among all five members.

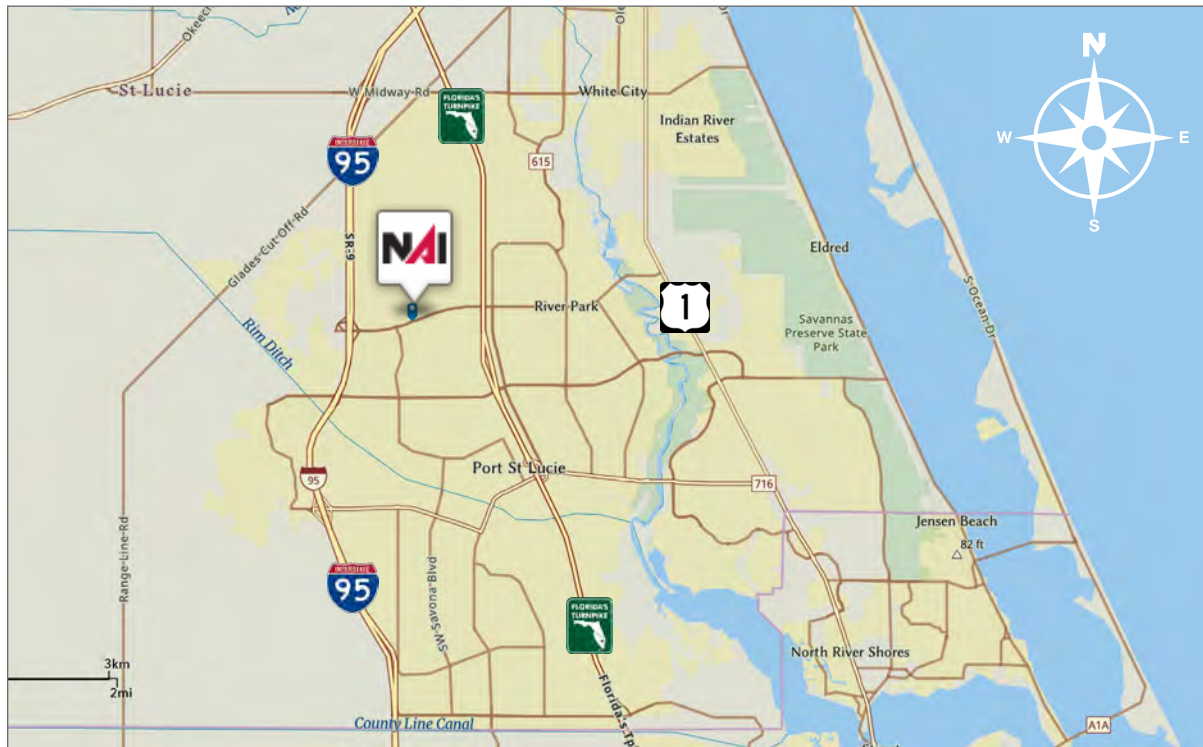
Development within the City has been primarily west of I-95 within the Tradition Development; however, there is much infill development occurring in the General Development platted areas of the city. At its inception, Port St. Lucie was platted by General Development company as 15,000 acres of 80x120 single family lots. The development pattern has largely held true to this plat, with utilities, public works and roads being expanded over the decades to accommodate the growth of the city. As pro-growth municipality Port St. Lucie is generally viewed as a favorable environment to do business.

Drive Time

1555 NW St. Lucie West Boulevard

Port St. Lucie, FL 34986

Destination	Distance	Time
I-95	2.8 Miles	8 Minutes
Florida Turnpike	5 Miles	14 Minutes
US-1	4.8 Miles	10 Minutes



Contact us for more information:



Stuart Duffin, P. A., SIOR, CCIM

Broker Associate
+1 772 579 0370
sduffin@naisouthcoast.com



JJ Sanguily

Sales Associate
+1 772 834 3519
jj@naisouthcoast.com