



21 LEWIS PLAZA 2424 E 21ST ST, TULSA, OK 74114

HIGHLIGHTS

- Easy Access to the BA Expressway
- Located near St John Hospital and Hillcrest Medical Center
- On-Site Bank
- Common Area Break Room
- Loading dock
- Recent Elevator and Common Area Remodel
- LED Lighting Upgrade
- Monument Signage Available

LOCATION DESCRIPTION

Located at the southeast corner of 21st Street and S. Lewis Avenue in Mid-town Tulsa. This highly sought-after location has a high household demographic, with Utica Square Shopping Center, St. John's Hospital and Monte Cassino Catholic School within half a mile of the property. Access to the Broken Arrow Expressway is approximately 1 mile to the east of the property which leads to the east side of Tulsa as well as access to Highway 75 for the north/south access to Tulsa's west side.

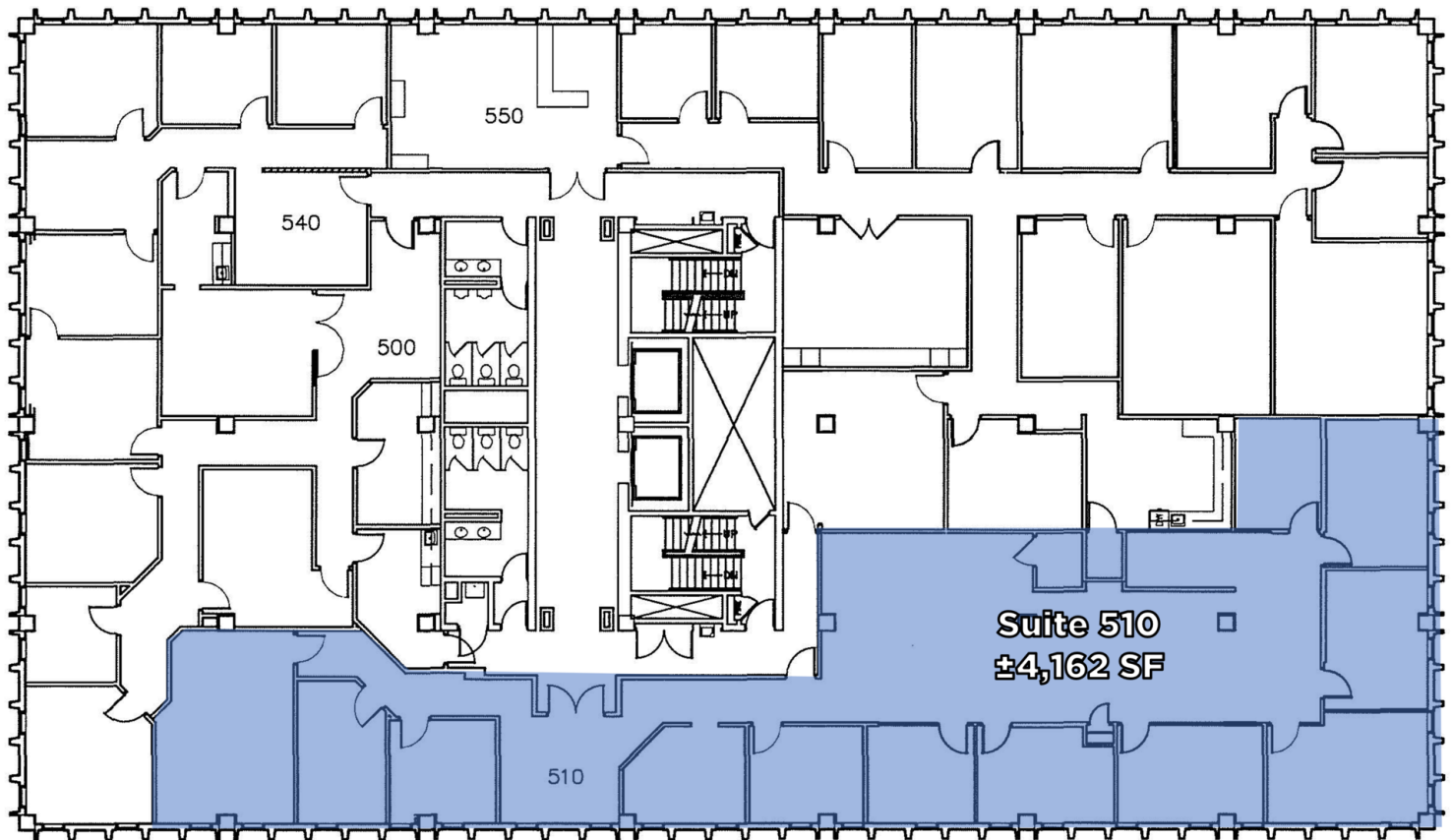
Lease Rate:	\$20.00 SF/yr (Full Service)
Building Class:	A
Available SF:	2,406 - 4,162 SF
Building Size:	58,846 SF
Parking	4.40/1,000 SF



Lisa Brandes, RPA
VICE PRESIDENT
918.978.6155
Lisa@legacypadvisors.com



William Beichler, SIOR, CCIM
PRINCIPAL AND MANAGING BROKER
918.859.8850
bill@legacypadvisors.com



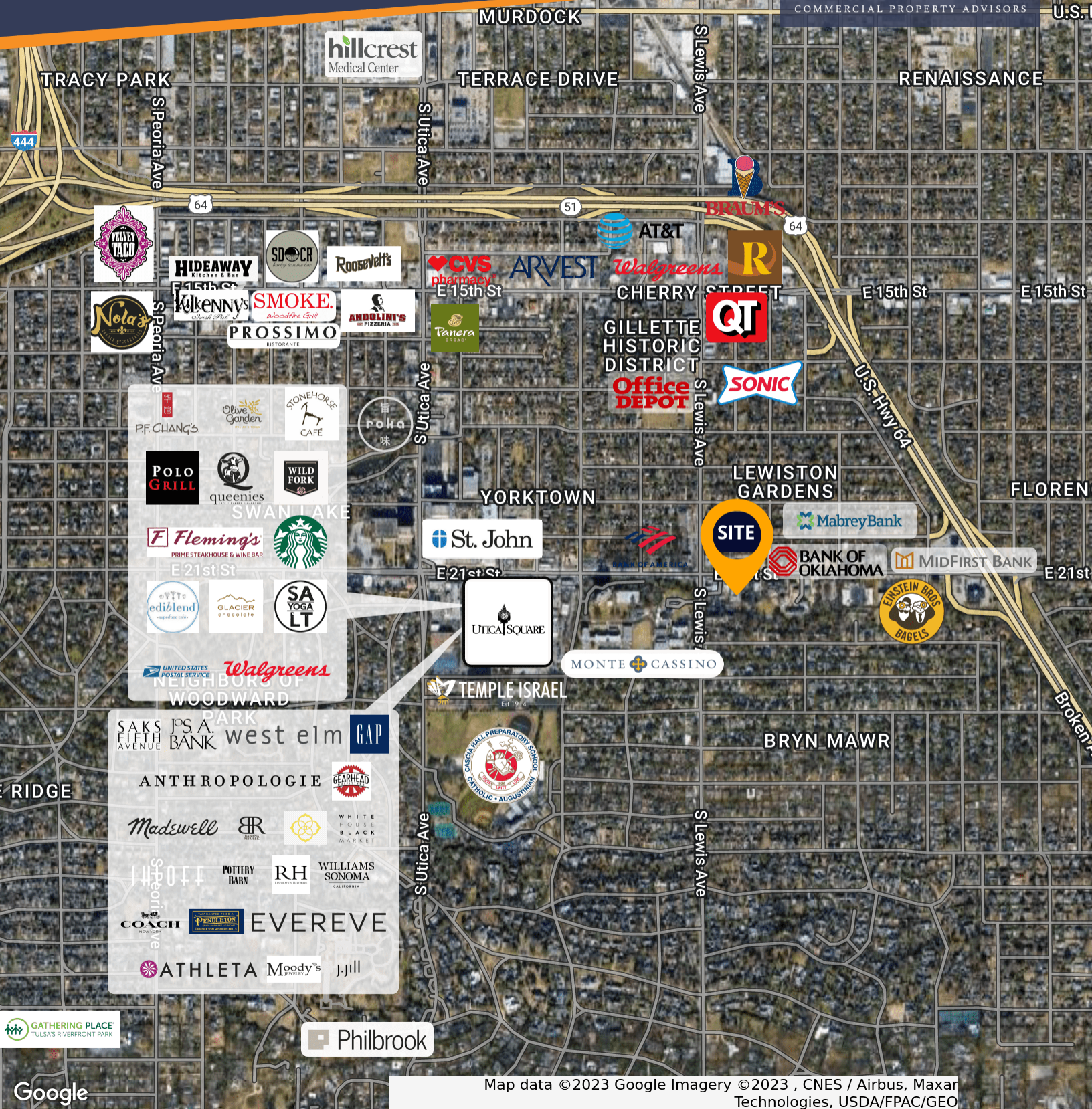
Lisa Brandes, RPA
VICE PRESIDENT
918.978.6155
Lisa@legacypadvisors.com



William Beichler, SIOR, CCIM
PRINCIPAL AND MANAGING BROKER
918.859.8850
bill@legacypadvisors.com

OFFICE | OFFICE BUILDING
FOR LEASE

LEGACY
COMMERCIAL PROPERTY ADVISORS



Map data ©2023 Google Imagery ©2023 , CNES / Airbus, Maxar Technologies, USDA/FPAC/Geo



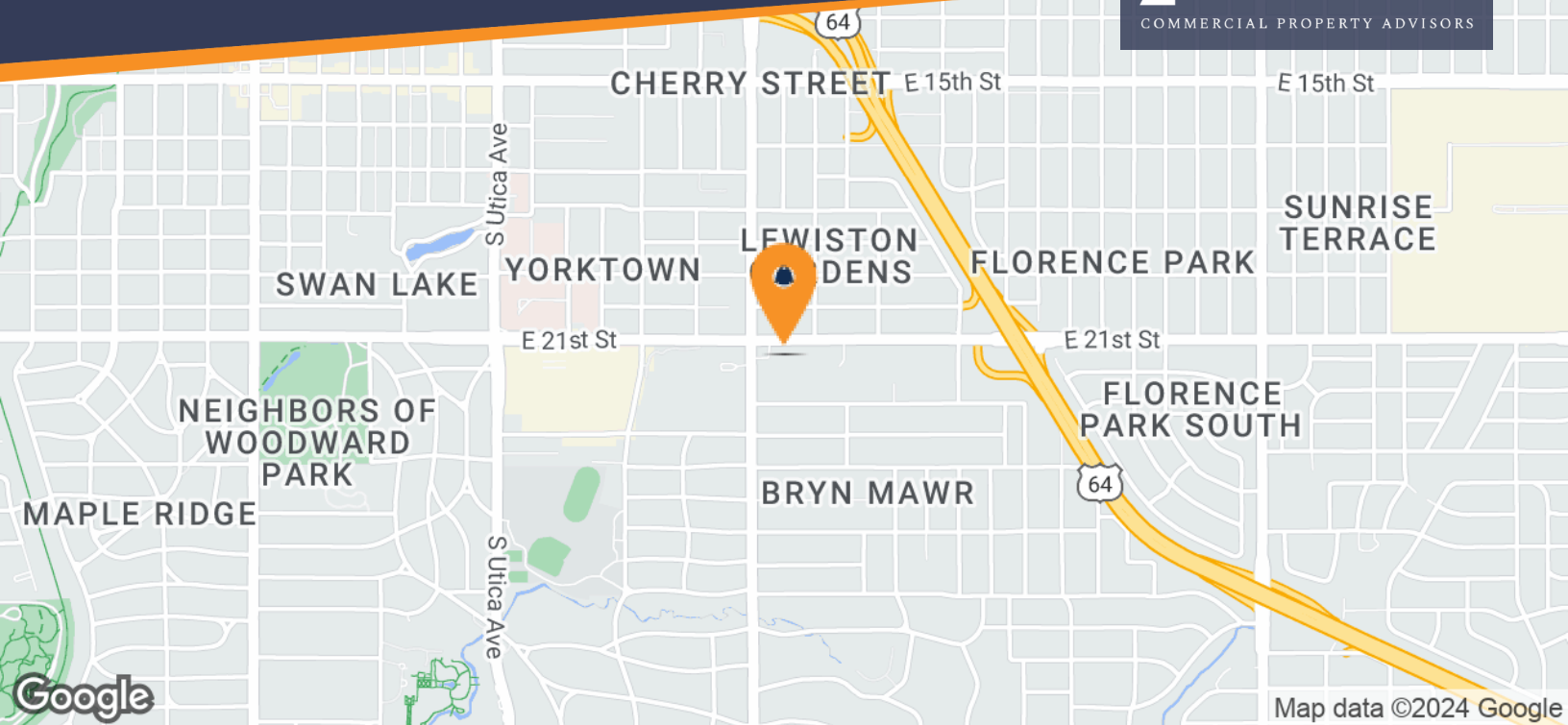
Lisa Brandes, RPA
VICE PRESIDENT
918.978.6155
Lisa@legacypadvisors.com



William Beichler, SIOR, CCIM
PRINCIPAL AND MANAGING BROKER
918.859.8850
bill@legacypadvisors.com

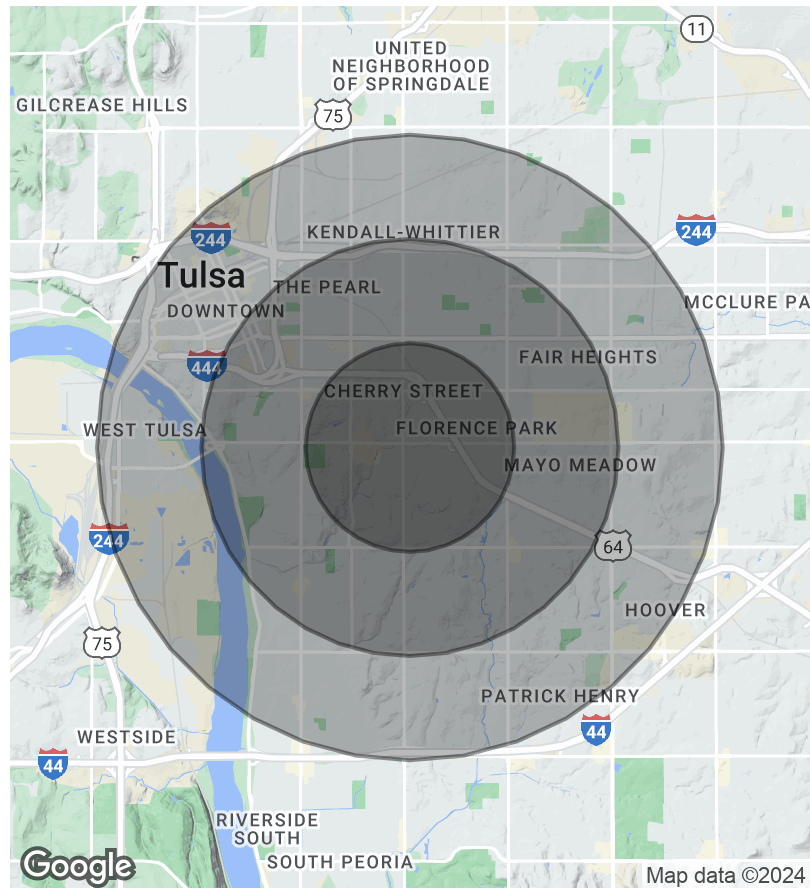
1717 S Boulder Ave Suite 106 | Tulsa, OK 74119 | legacypadvisors.com | 918.438.9999

©2023 Legacy Commercial Property Advisors. All rights reserved. This information has been obtained from sources believed reliable, but has not been verified for accuracy or completeness. You should conduct a careful, independent investigation of the property and verify all information. Any reliance on this information is solely at your own risk. Photos herein are the property of their respective owners. Use of these images without the express written consent of the owner are prohibited.



POPULATION	1 MILE	2 MILES	3 MILES
Total Population	10,637	42,625	91,940
Average Age	41.0	38.4	37.5
Average Age (Male)	40.2	37.5	36.3
Average Age (Female)	41.1	39.5	38.9
HOUSEHOLDS & INCOME	1 MILE	2 MILES	3 MILES
Total Households	5,196	19,525	42,214
# of Persons per HH	2.0	2.2	2.2
Average HH Income	\$101,902	\$86,032	\$70,303
Average House Value	\$412,843	\$386,651	\$268,752

* Demographic data derived from 2020 ACS - US Census



Lisa Brandes, RPA
VICE PRESIDENT
918.978.6155
Lisa@legacypadvisors.com



William Beichler, SIOR, CCIM
PRINCIPAL AND MANAGING BROKER
918.859.8850
bill@legacypadvisors.com