

Fully furnished 9,000 sf suite with private offices and large bullpen available.

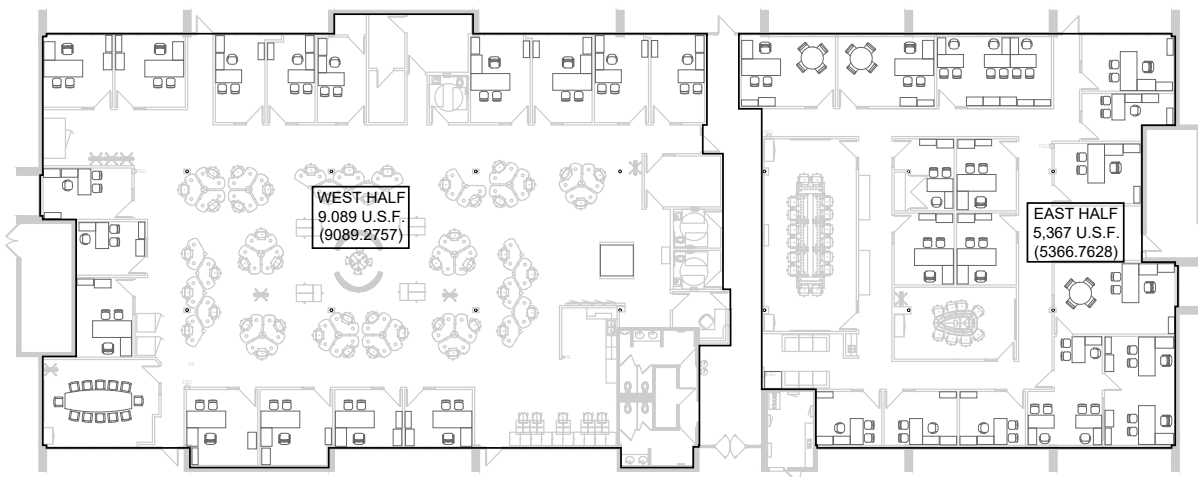
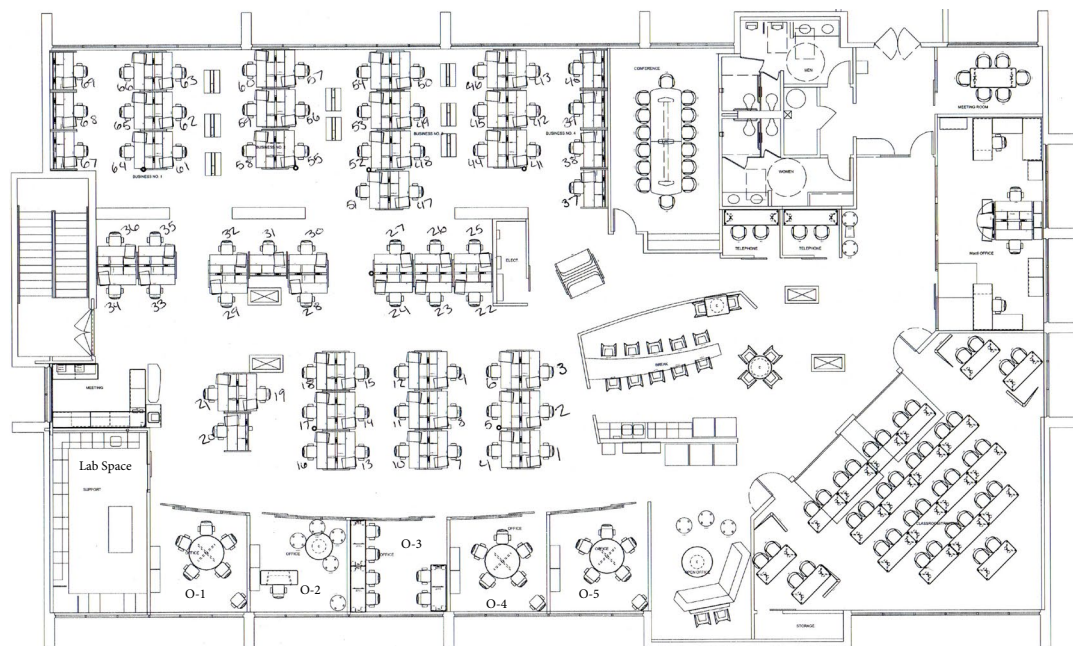
- Individual desks and private offices
- Can accommodate businesses from 1- 70 employees

We pay high broker commissions!

10%: Year 1

3%: Years 2-3

2%: Renewals



Space type

Pricing starting at

Virtual office

\$59/month

Flex desk

\$129/month

Dedicated desk

\$375/month

Private office

\$599/month

Office suite

\$1,999/month

Co-manufacturing

On request

3-6 ksf spaces

On request



View virtual tour



The MAC⁶ Tempe, AZ Entrepreneurial Campus offers three unique coworking environments for entrepreneurs, growing businesses and professional service providers.



1

Desk+ workspace

- Full service private suites range from 1,500 to 9,000 sf serving 10 to 75 employees
- Community Membership options include private offices and dedicated / flex desks starting at \$129 per month

2

Growth+ workspace

- Growth+ offers 10,000 square feet of semi-private coworking suites for growth-oriented businesses ranging from 5 to 25 employees
- Community Membership options include unique combinations of private offices and robust workspace solutions starting at \$1,999 per month

3

Privacy+ workspace

- Privacy+ (un-executive suites) offers 5,000 sf of private office solutions for professional service providers and smaller businesses with enhanced security requirements
- Community Membership options range from one to several private offices starting at \$599 per month

4

Virtual+ office

- A professional image, without paying for a desk. Get mail and an address in the center of Tempe starting at \$59 per month

Member amenities



Guarantee

MAC⁶ offers leases you can break in some circumstances. Literally. It's in the contract.



Technology

Work better with fiber internet, VOIP phone capabilities, on-site IT, and printing, copying and scanning, all included in your rent.



On-site management

On-site management with nightly security and a notary.



Networking

Weekly lunches and other events, along with events from outside community partners.



Healthy space

We encourage health with a 24/7 gym (with trainer), Cartel cold brew coffee, and FloWater systems in each space.



Organizational growth

Programs to help your values-driven culture support profit and purpose in a people-centric system.