

JAMESON.

FOR LEASE

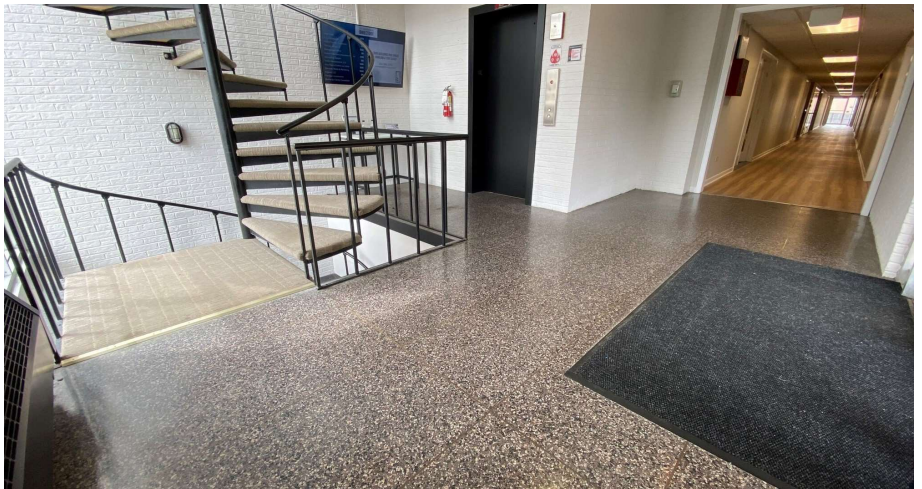
PROFESSIONAL OFFICE SUITES

222 E. Wisconsin Avenue
Lake Forest, IL 60045

Brent Burden, CCIM
Senior Vice President
847.826.7271
bburden@jameson.com

JAMESONCOMMERCIAL.COM

©Jameson Real Estate LLC. All information provided herein is from sources deemed reliable. No representation is made as to the accuracy thereof & it is submitted subject to errors, omissions, changes, prior sale or lease, or withdrawal without notice. Projections, opinions, assumptions & estimates are presented as examples only & may not represent actual performance. Consult tax & legal advisors to perform your own investigation.



JAMESON.



LEASE OVERVIEW

LEASE PRICE: \$25.00 - 36.00 SF/yr

SUITE SIZES: 225-5,647 SF

BUILDING SIZE: 22,000 SF

PARKING: On site surface

ZONING: B-3

MARKET: Lake Forest

CROSS STREETS: Wisconsin
Avenue/Western
Avenue

AREA TENANTS

- Le Colonial
- Deerpath Inn
- Lululemon
- The Fresh Market
- Walgreens
- Lake Forest Bank & Trust
- BMO Harris
- Foodstuffs
- UPS Store
- Starbucks

PROPERTY DESCRIPTION

Gross Leases.
RE Taxes and CAM charges included in rent.
Medical and Professional Office Suites.

PROPERTY HIGHLIGHTS

- 225-5,647 SF available
- On site parking
- New Elevator- fully accessible
- Medical & Professional Office Suites.
- Flexible Suites sizes that will accommodate a wide variety of Professional Tenants.
- Major improvements to light fixtures, ceiling tiles, washrooms, mechanical, electrical and plumbing.
- 2nd floor- Full floor available! 1,500- 5,647 SF!!!
- Internet included!

AREA AND TRANSPORTATION HIGHLIGHTS

- Metra Station- 2 block walk
- Parking- on site
- Skokie Valley Highway (Rte. 41)- 5 minute drive
- I294- 11 minute drive
- O'Hare Int'l Airport- 28 minute drive

INTERIOR PHOTOS

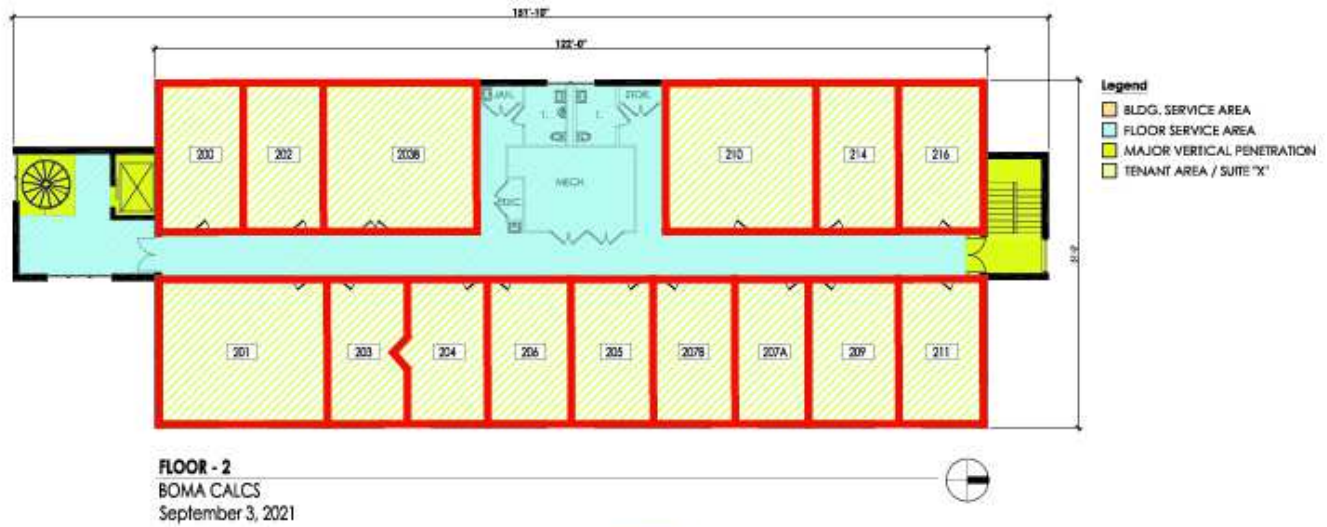
222 E. Wisconsin, Lake Forest, IL 60045



FLOOR PLAN

222 E. Wisconsin, Lake Forest, IL 60045

\$25.00 - 36.00 SF/yr



222 E. WISCONSIN AVE.
LAKE FOREST, IL 60045



222 E. WISCONSIN AVE.
LAKE FOREST, IL 60045

FLOOR PLAN

222 E. Wisconsin, Lake Forest, IL 60045



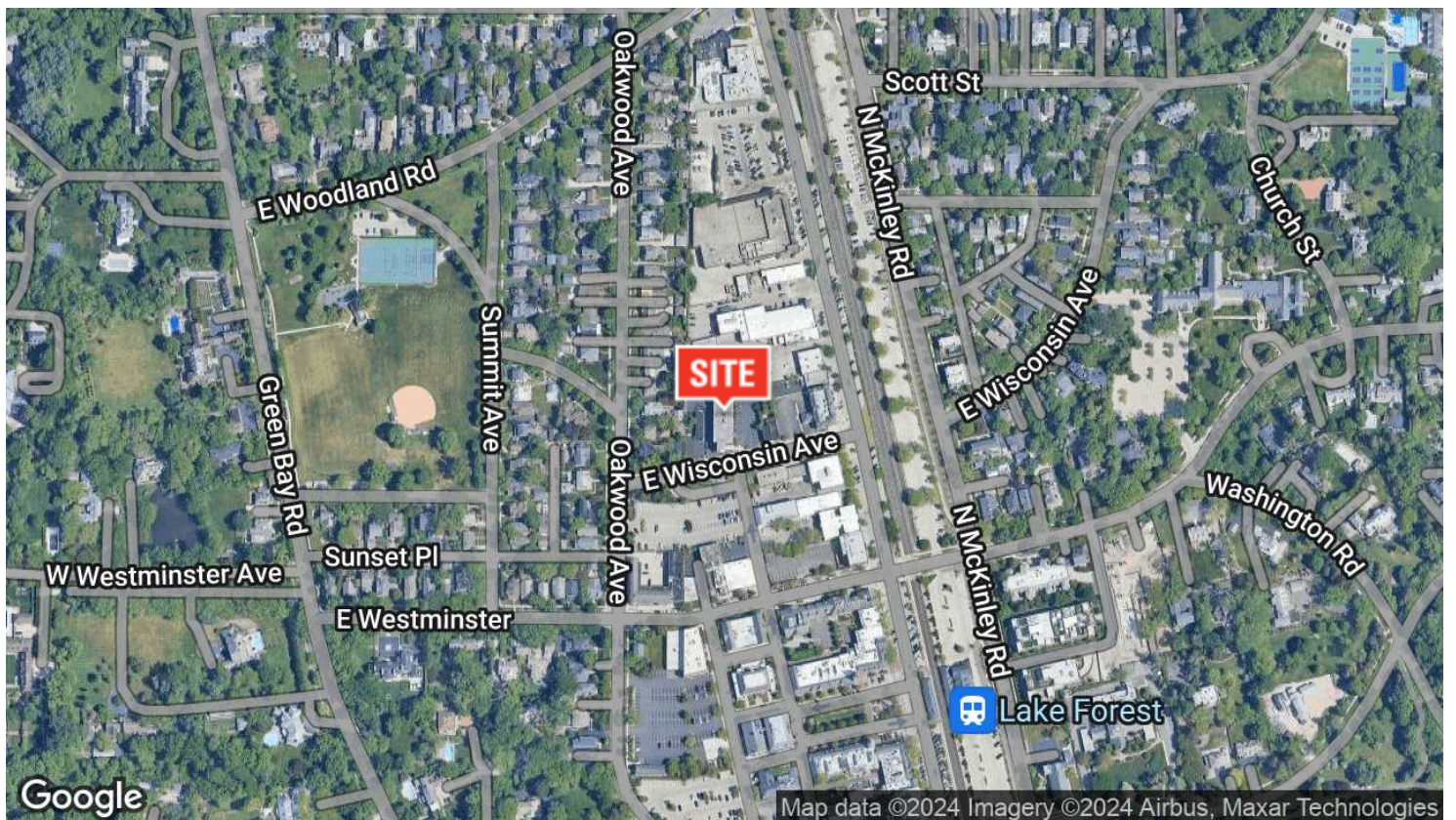
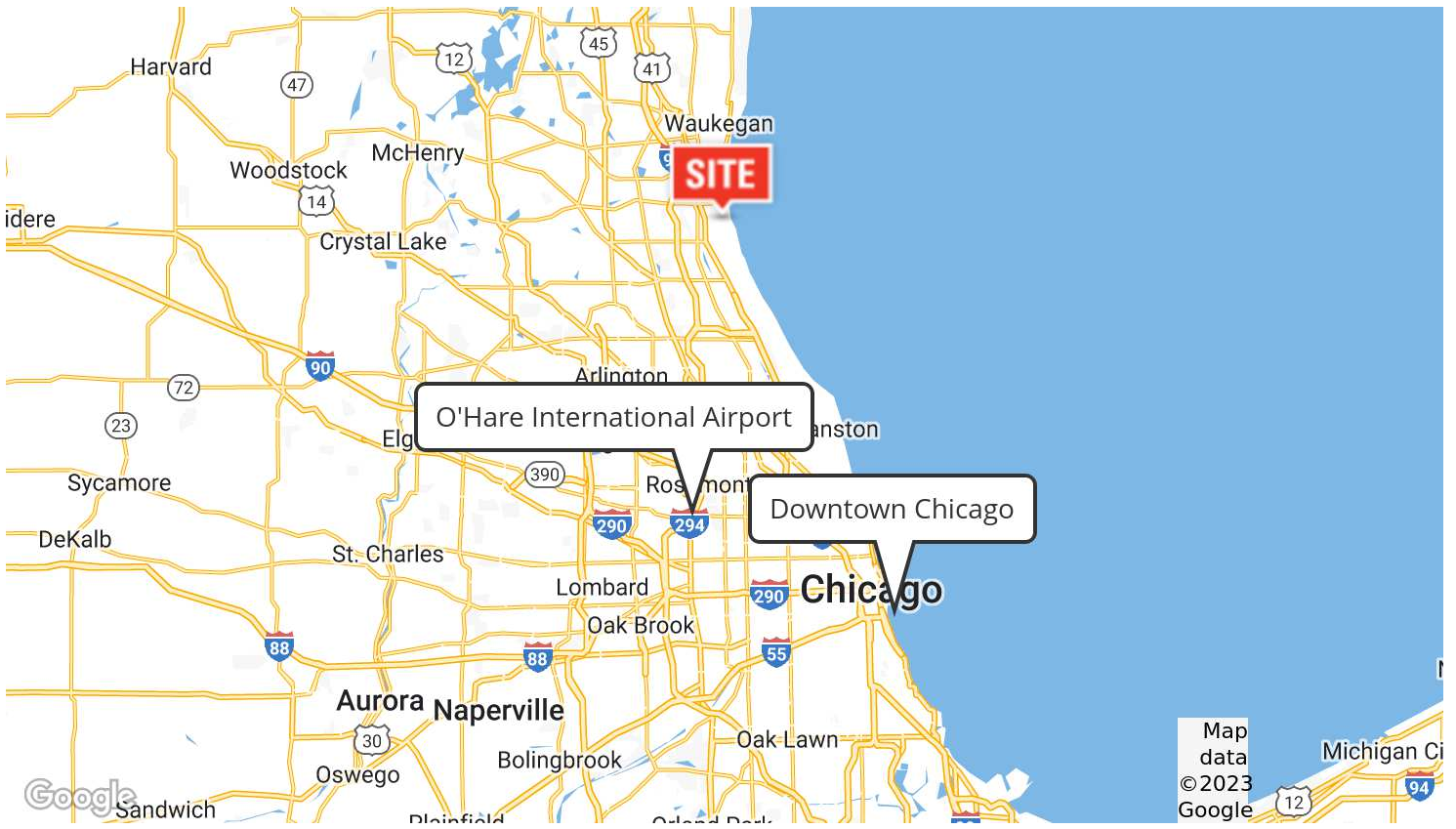
222 E. WISCONSIN AVE.
LAKE FOREST, IL 60045



222 E. WISCONSIN AVE.
LAKE FOREST, IL 60045

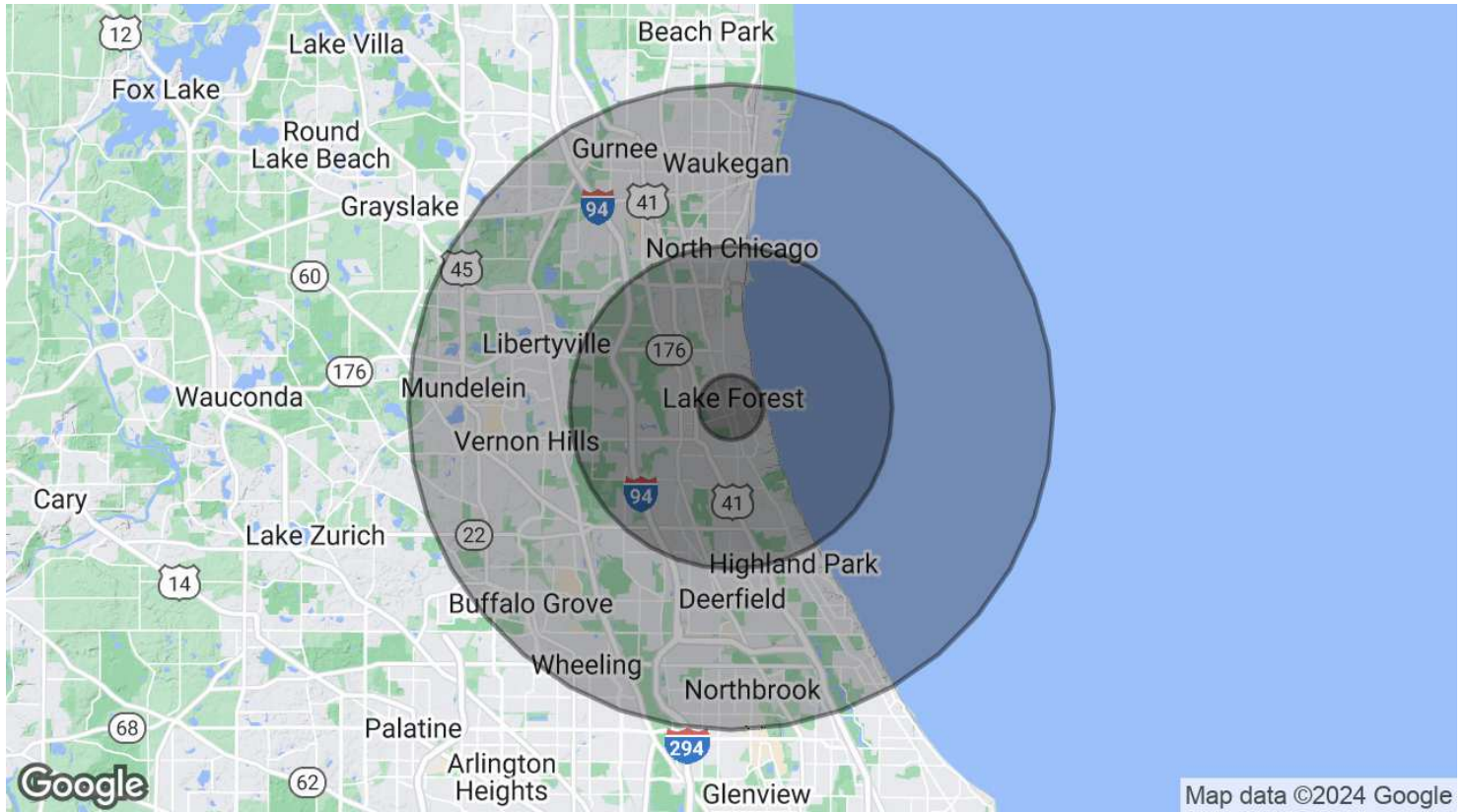
AERIAL & STREET DETAIL

222 E. Wisconsin, Lake Forest, IL 60045



DEMOGRAPHICS MAP & REPORT

222 E. Wisconsin, Lake Forest, IL 60045



POPULATION

	1 MILE	5 MILES	10 MILES
Total Population	3,524	81,270	431,186
Average Age	37.1	38.5	38.1
Average Age (Male)	33.5	37.8	37.0
Average Age (Female)	40.6	39.0	38.8

HOUSEHOLDS & INCOME

	1 MILE	5 MILES	10 MILES
Total Households	1,185	26,249	150,465
# of Persons per HH	3.0	3.1	2.9
Average HH Income	\$233,322	\$168,378	\$123,167
Average House Value	\$812,122	\$672,637	\$492,165

ETHNICITY (%)

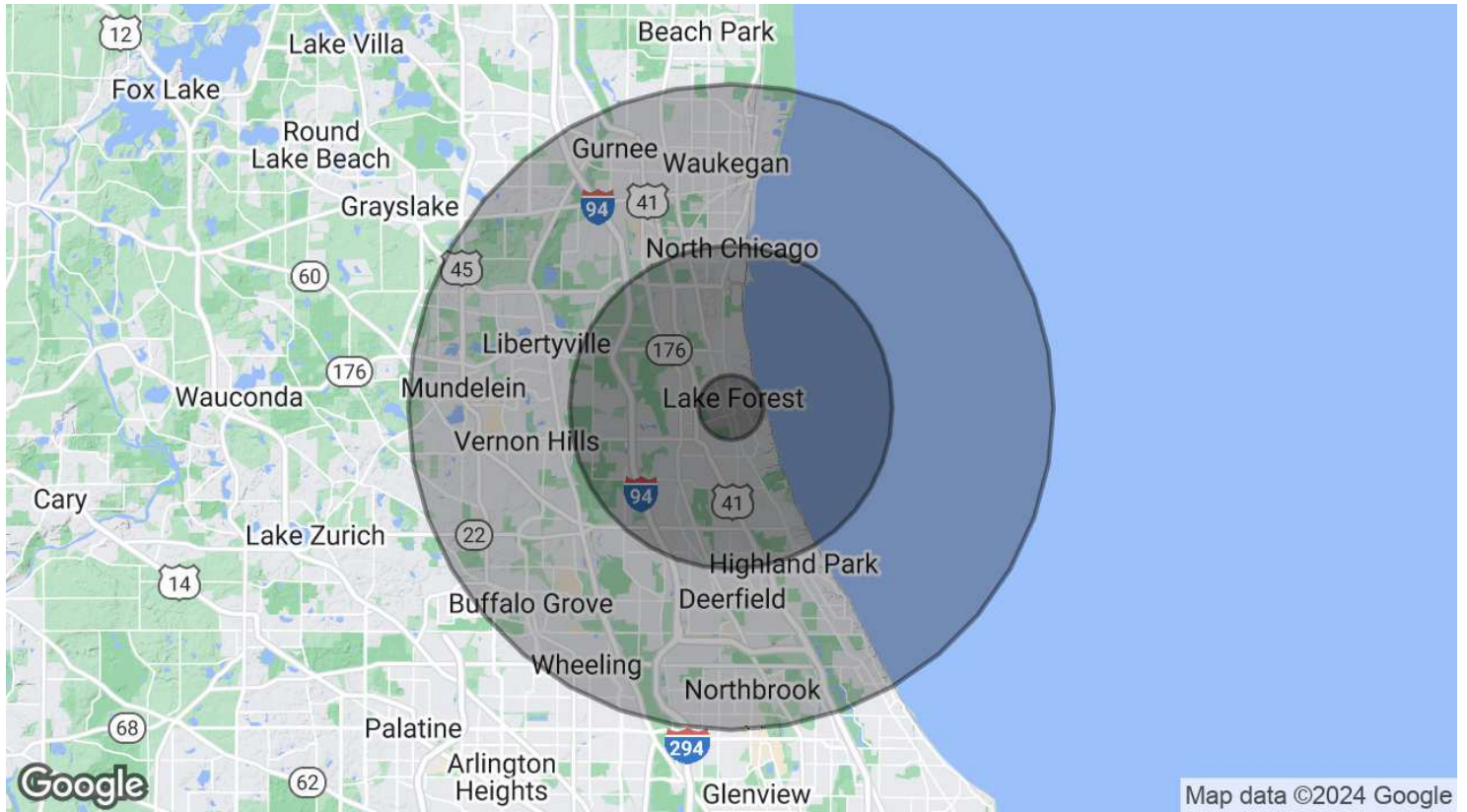
	1 MILE	5 MILES	10 MILES
Hispanic	3.7%	12.3%	21.5%

RACE

	1 MILE	5 MILES	10 MILES
--	--------	---------	----------

DEMOGRAPHICS MAP & REPORT

222 E. Wisconsin, Lake Forest, IL 60045



Total Population - White	3,271	63,788	309,021
% White	92.8%	78.5%	71.7%
Total Population - Black	49	7,047	34,558
% Black	1.4%	8.7%	8.0%
Total Population - Asian	115	3,673	30,121
% Asian	3.3%	4.5%	7.0%
Total Population - Hawaiian	0	73	140
% Hawaiian	0.0%	0.1%	0.0%
Total Population - American Indian	0	122	624
% American Indian	0.0%	0.2%	0.1%
Total Population - Other	61	4,545	47,922
% Other	1.7%	5.6%	11.1%

* Demographic data derived from 2020 ACS - US Census