

RESIDENTIAL LOFTS

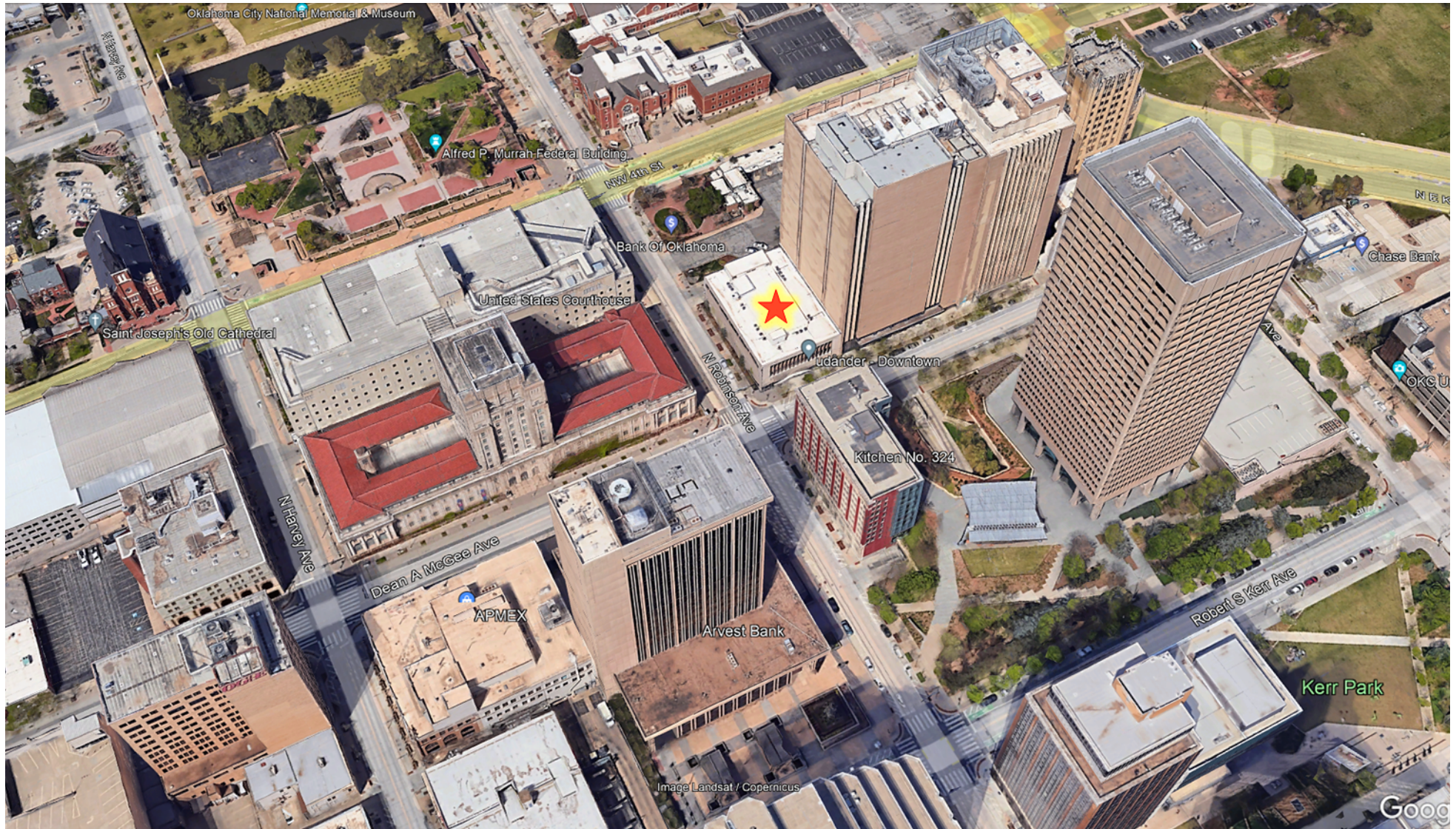
CARNEGIE CENTRE

131 DEAN A MCGEE AVE, OKLAHOMA CITY, OK 73102



CARNEGIE CENTRE

131 DEAN A MCGEE AVE, OKLAHOMA CITY, OK 73102



JUDY J. HATFIELD, CCIM

Equity Commercial Realty Advisors, LLC
jjhatfield@ccim.net

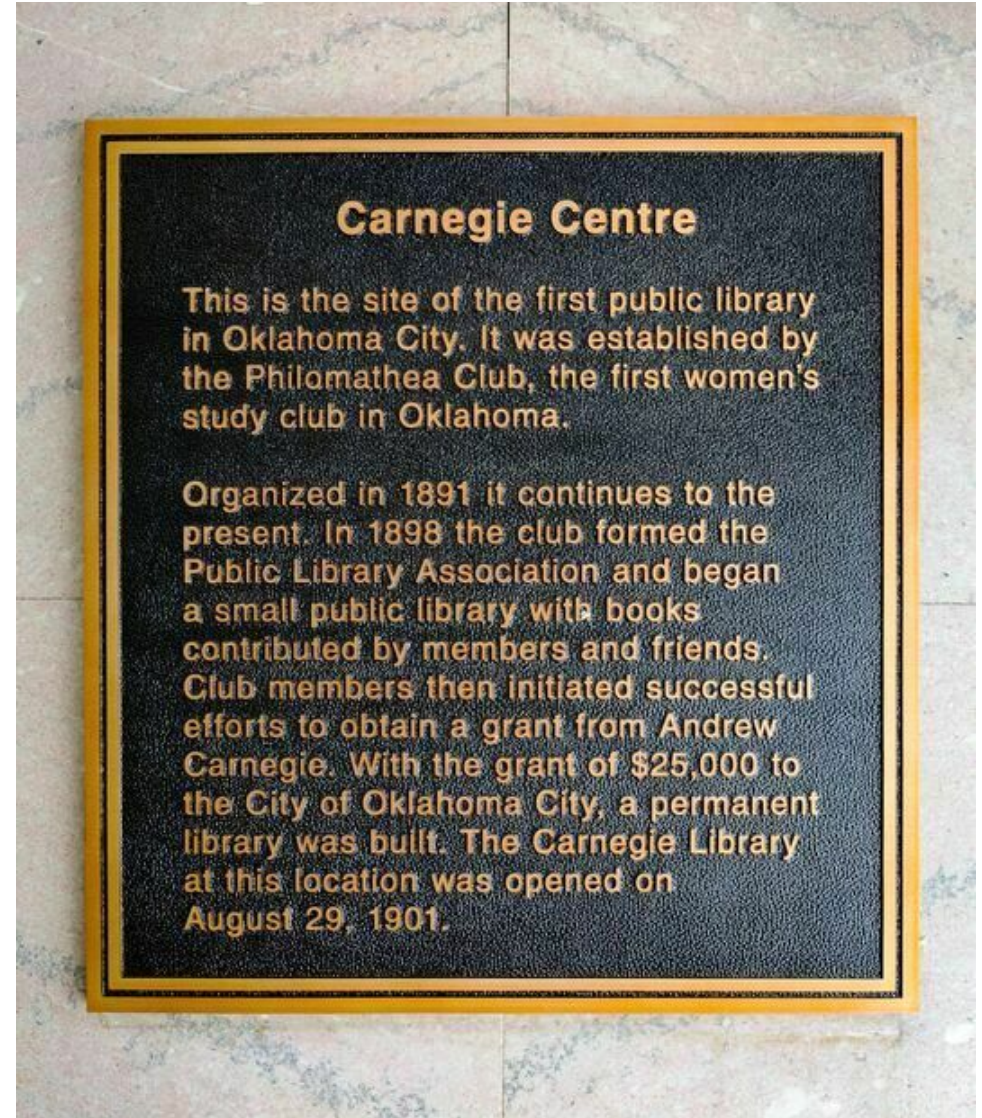
(405) 640- 6167 cell
(405) 364- 5300 office

CARNEGIE CENTRE

131 DEAN A MCGEE AVE, OKLAHOMA CITY, OK 73102



Carnegie Library - 1954



Carnegie Centre

This is the site of the first public library in Oklahoma City. It was established by the Philomathean Club, the first women's study club in Oklahoma.

Organized in 1891 it continues to the present. In 1898 the club formed the Public Library Association and began a small public library with books contributed by members and friends. Club members then initiated successful efforts to obtain a grant from Andrew Carnegie. With the grant of \$25,000 to the City of Oklahoma City, a permanent library was built. The Carnegie Library at this location was opened on August 29, 1901.

JUDY J. HATFIELD, CCIM

Equity Commercial Realty Advisors, LLC
jjhatfield@ccim.net

(405) 640- 6167 cell
(405) 364- 5300 office

CARNEGIE CENTRE

131 DEAN A MCGEE AVE, OKLAHOMA CITY, OK 73102



JUDY J. HATFIELD, CCIM

Equity Commercial Realty Advisors, LLC
jjhatfield@ccim.net

(405) 640- 6167 cell
(405) 364- 5300 office

CARNEGIE CENTRE

131 DEAN A MCGEE AVE, OKLAHOMA CITY, OK 73102



JUDY J. HATFIELD, CCIM

Equity Commercial Realty Advisors, LLC
jjhatfield@ccim.net

(405) 640- 6167 cell
(405) 364- 5300 office

RESIDENTIAL LOFT AMENITIES

Exposed Ceilings

Granite Countertops

GE Stainless Steel Appliances

Front Loading Bosch Washer/Dryer

Spacious Walk-In Closets

Large Bathroom and Storage

Expansive Windows with Downtown Views

Garage Level Parking (Optional)

Private Storage Units (Optional)

COMMUNITY AMENITIES

On-Site Owner/Manager

Controlled Access and Security Cameras

Two Elevators

Pet-Friendly

UPS Door Delivery

Art Gallery with Changing Exhibits

Lobby for Entertaining

Located on Streetcar Route

Downtown Employers & OKC Entertainment
Venues Nearby

Judy J. Hatfield, Broker / Owner

JUDY J. HATFIELD, CCIM

Equity Commercial Realty Advisors, LLC
jjhatfield@ccim.net

(405) 640- 6167 cell
(405) 364- 5300 office

THIRD LEVEL LOFTS

CARNEGIE CENTRE

LOFT 306

1,416 SF

\$2,100 MO.

LOFT 310

1,060 SF

\$1,700 MO.

LOFT 314

1,231 SF

\$1,900 MO.

LOFT 307

1,256 SF

\$2,000 MO.

AVAILABLE

LOFT 311

1,124 SF

\$1,800 MO.

LOFT 315

1,300 SF

\$1,950 MO.

AVAILABLE - 8/1

LOFT 308

1,227 SF

\$1,850 MO.

LOFT 312 (FURNISHED)

1,133 SF

\$3,600 MO.

AVAILABLE - 8/12

OFFICE 316

146 SF

\$350 MO.

AVAILABLE

LOFT 309

1,146 SF

\$1,900 MO.

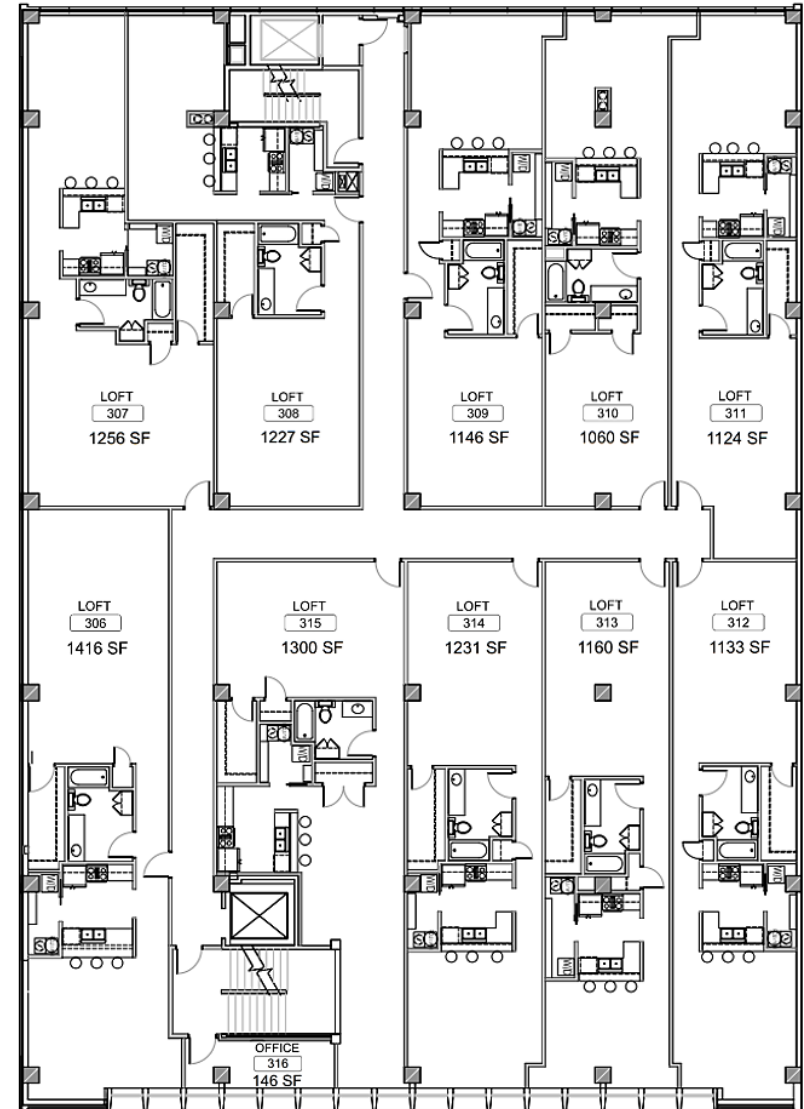
AVAILABLE - 9/1

LOFT 313

1,160 SF

\$1,925 MO.

AVAILABLE - 8/1



JUDY J. HATFIELD, CCIM

Equity Commercial Realty Advisors, LLC
jjhatfield@ccim.net

(405) 640- 6167 cell
(405) 364- 5300 office

FOURTH LEVEL LOFTS

CARNEGIE CENTRE

LOFT 406 (FURNISHED)

723 SF
\$3,300 MO.

AVAILABLE

LOFT 407

1,111 SF
\$1,950 MO.

LOFT 408

1,407 SF
\$2,350 MO.

AVAILABLE - 6/1

LOFT 409

1,448 SF
\$2,375 MO.

LOFT 410

1,039 SF
\$1,950 MO.

LOFT 411

1,362 SF
\$2,050 MO.

LOFT 412

1,641 SF
\$2,850 MO.

LOFT 413

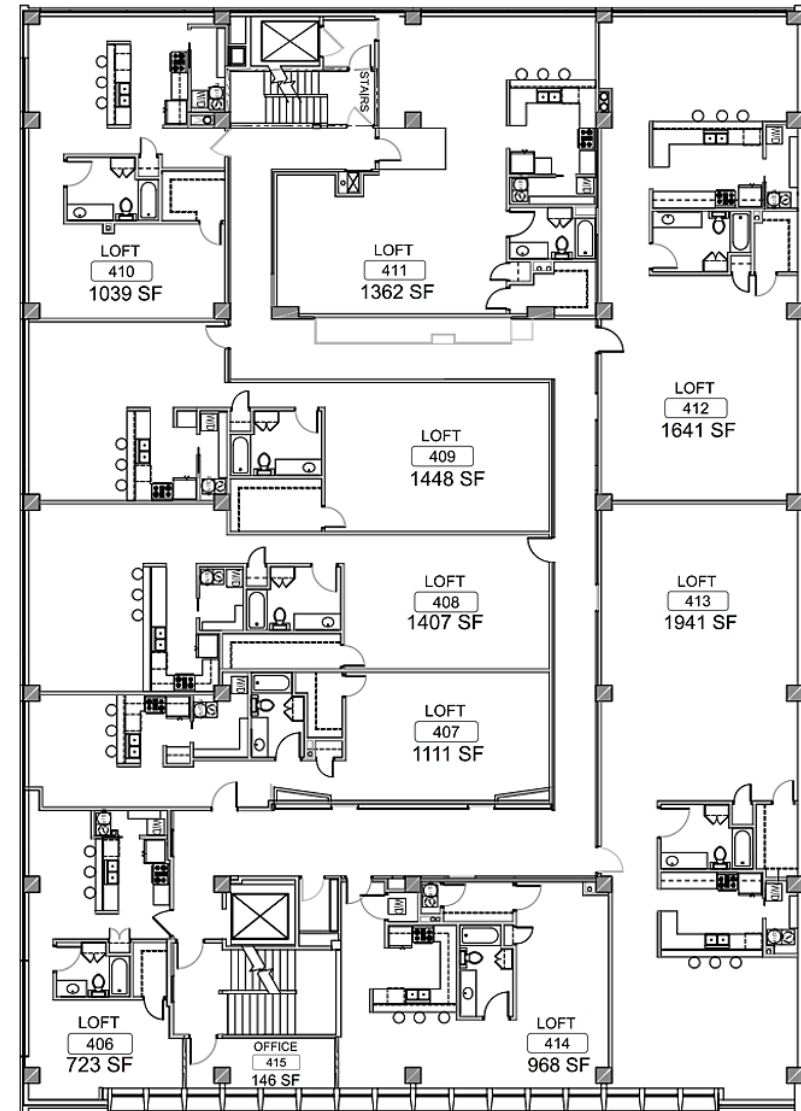
1,941 SF
\$3,150 MO.

LOFT 414

968 SF
\$1,750 MO.

OFFICE 415

146 SF
\$350 MO.



JUDY J. HATFIELD, CCIM

Equity Commercial Realty Advisors, LLC
jjhatfield@ccim.net

(405) 640- 6167 cell
(405) 364- 5300 office

SECURE PARKING GARAGE

CARNEGIE CENTRE



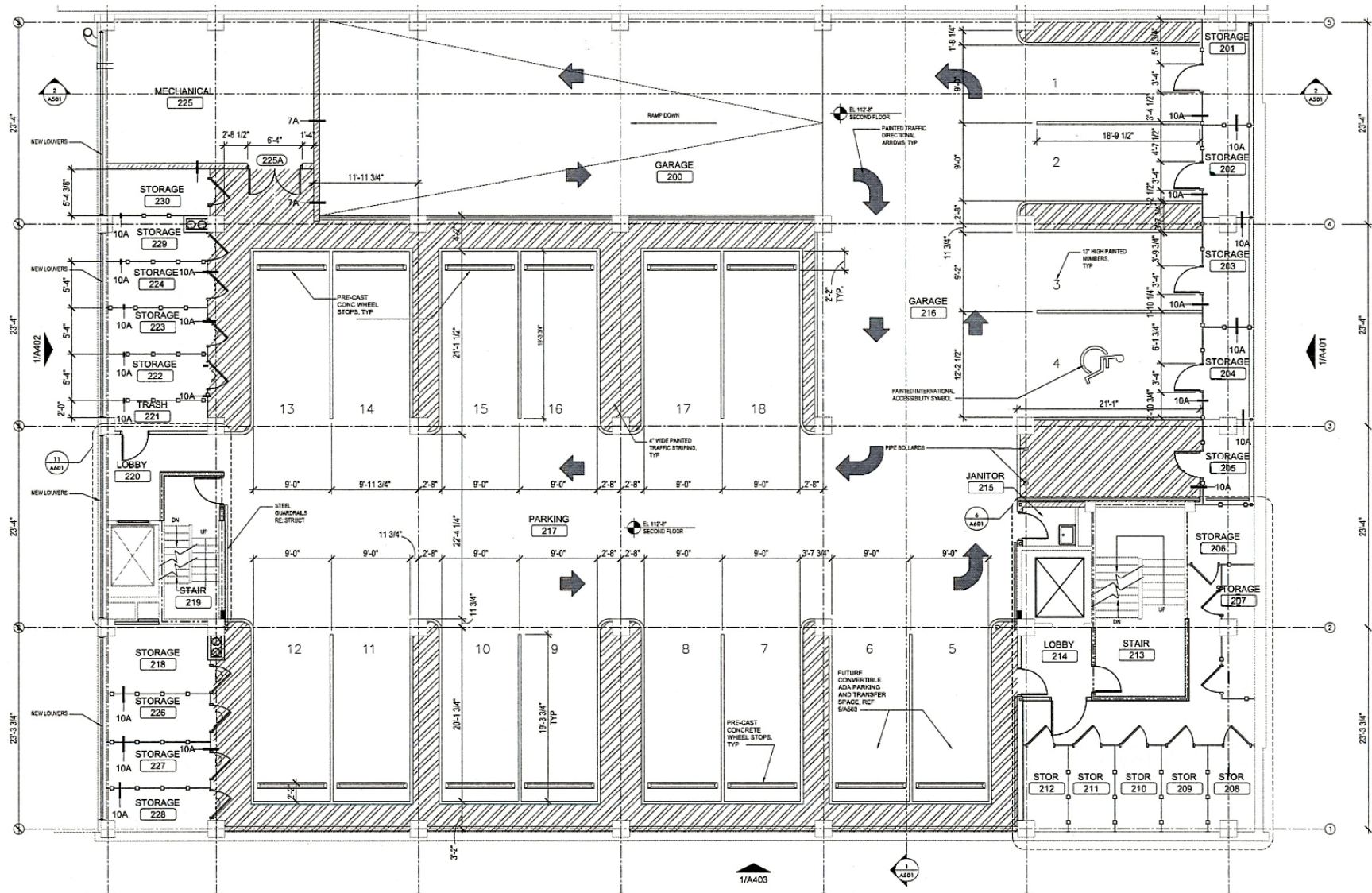
JUDY J. HATFIELD, CCIM

Equity Commercial Realty Advisors, LLC
jjhatfield@ccim.net

(405) 640- 6167 cell
(405) 364- 5300 office

SECURE GARAGE PARKING

CARNEGIE CENTRE



JUDY J. HATFIELD, CCIM

Equity Commercial Realty Advisors, LLC
jjhatfield@ccim.net

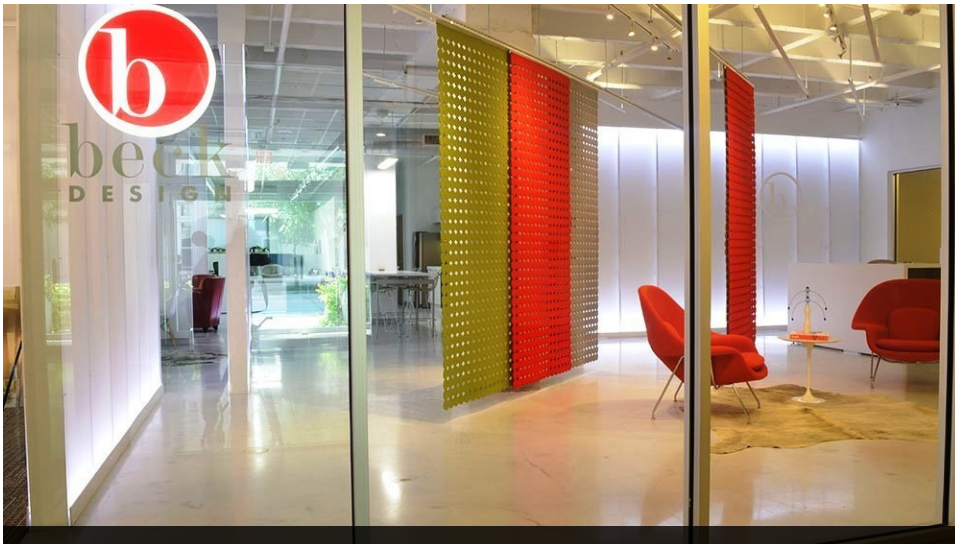
(405) 640- 6167 cell
(405) 364- 5300 office



udånder

TIME TO EXHALE

www.udander.com

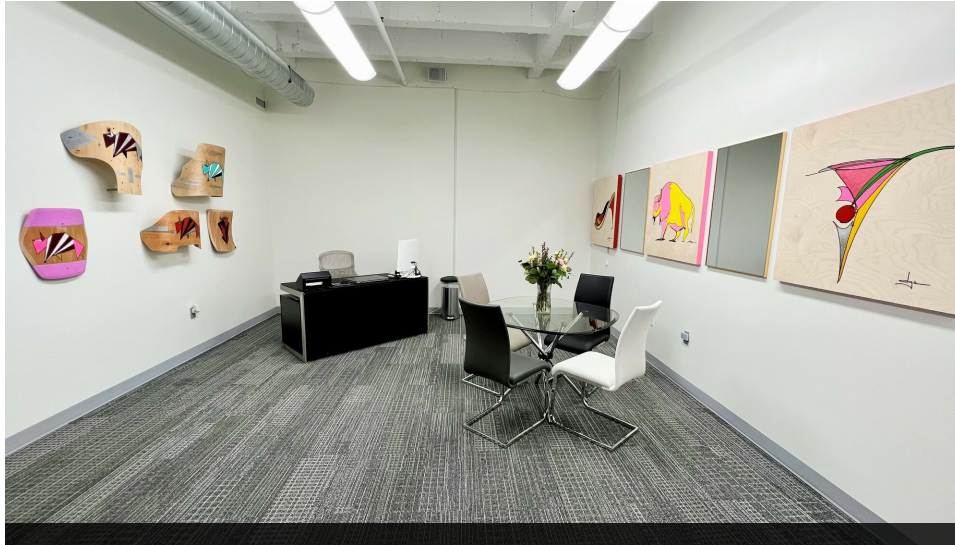


www.beckdesign.com

JUDY J. HATFIELD, CCIM

Equity Commercial Realty Advisors, LLC
jjhatfield@ccim.net

(405) 640- 6167 cell
(405) 364- 5300 office



ER Equity
Commercial
Realty
Advisors
SINCE 1981

www.equityrealty.net



UCOdowntown
UNIVERSITY OF CENTRAL OKLAHOMA • CARNEGIE CENTRE • OKC

www.uco.edu

JUDY J. HATFIELD, CCIM

Equity Commercial Realty Advisors, LLC
jjhatfield@ccim.net

(405) 640- 6167 cell
(405) 364- 5300 office



www.jacksbakehouseokc.com

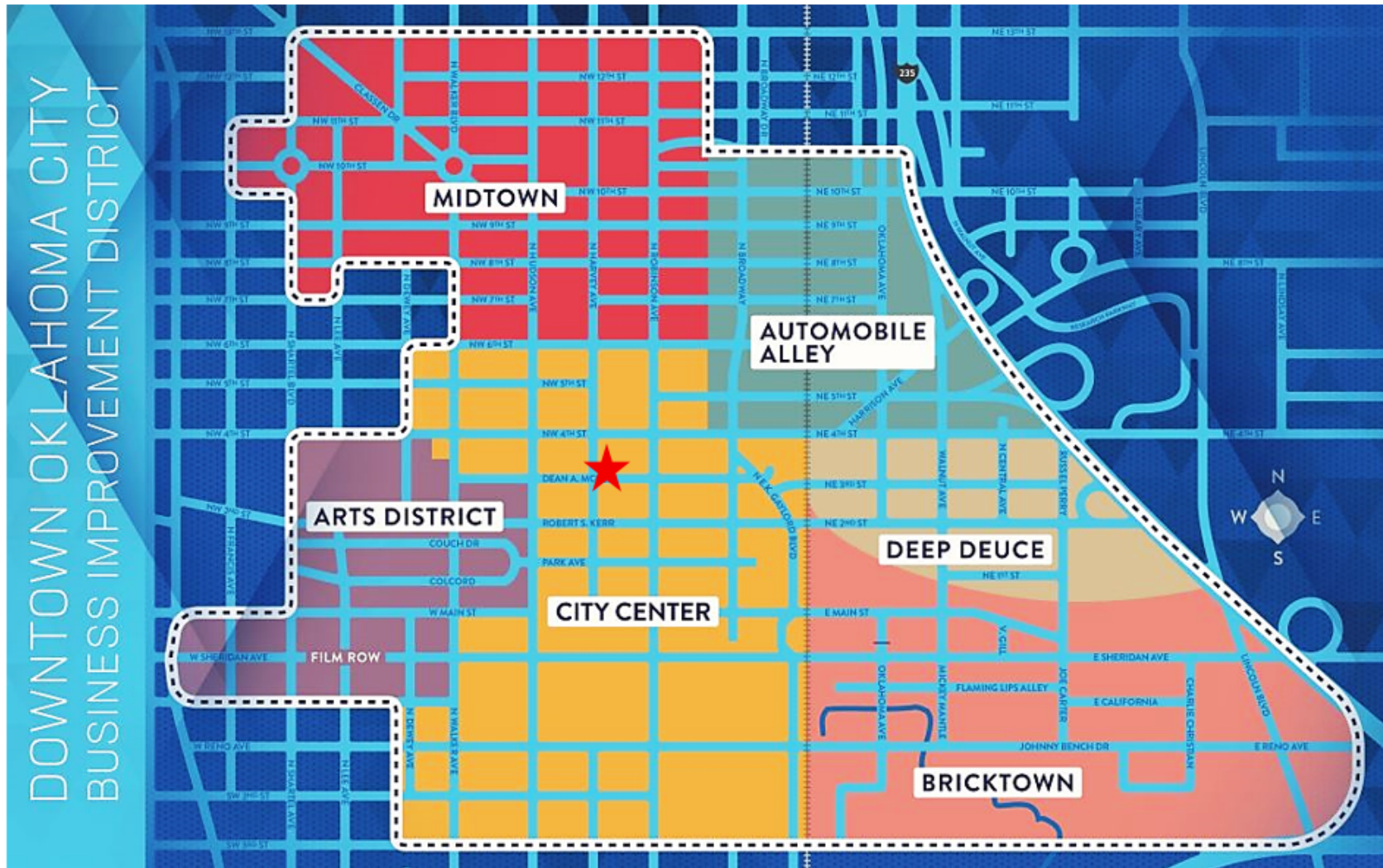
JUDY J. HATFIELD, CCIM

Equity Commercial Realty Advisors, LLC
jjhatfield@ccim.net

(405) 640- 6167 cell
(405) 364- 5300 office

CARNEGIE CENTRE

131 DEAN A MCGEE AVE, OKLAHOMA CITY, OK 73102



★ CARNEGIE CENTRE — 131 Dean A. McGee Avenue

JUDY J. HATFIELD, CCIM

Equity Commercial Realty Advisors, LLC
jjhatfield@ccim.net

(405) 640- 6167 cell
(405) 364- 5300 office