



## Shops available at Fry's- anchored shopping center



Join Fry's Food Stores, UFC Gym fitness,  
and The Melting Pot



Less than 2-miles from I-10 Fwy & Ray Rd  
interchange



One of Metro Phoenix's strongest  
submarkets



Ideal area demographics and traffic counts

### Get more information

**Matt Milinovich**

D 480 423 7959  
C 602 885 9393  
[matt.milinovich@avisonyoung.com](mailto:matt.milinovich@avisonyoung.com)

**James DeCremer**

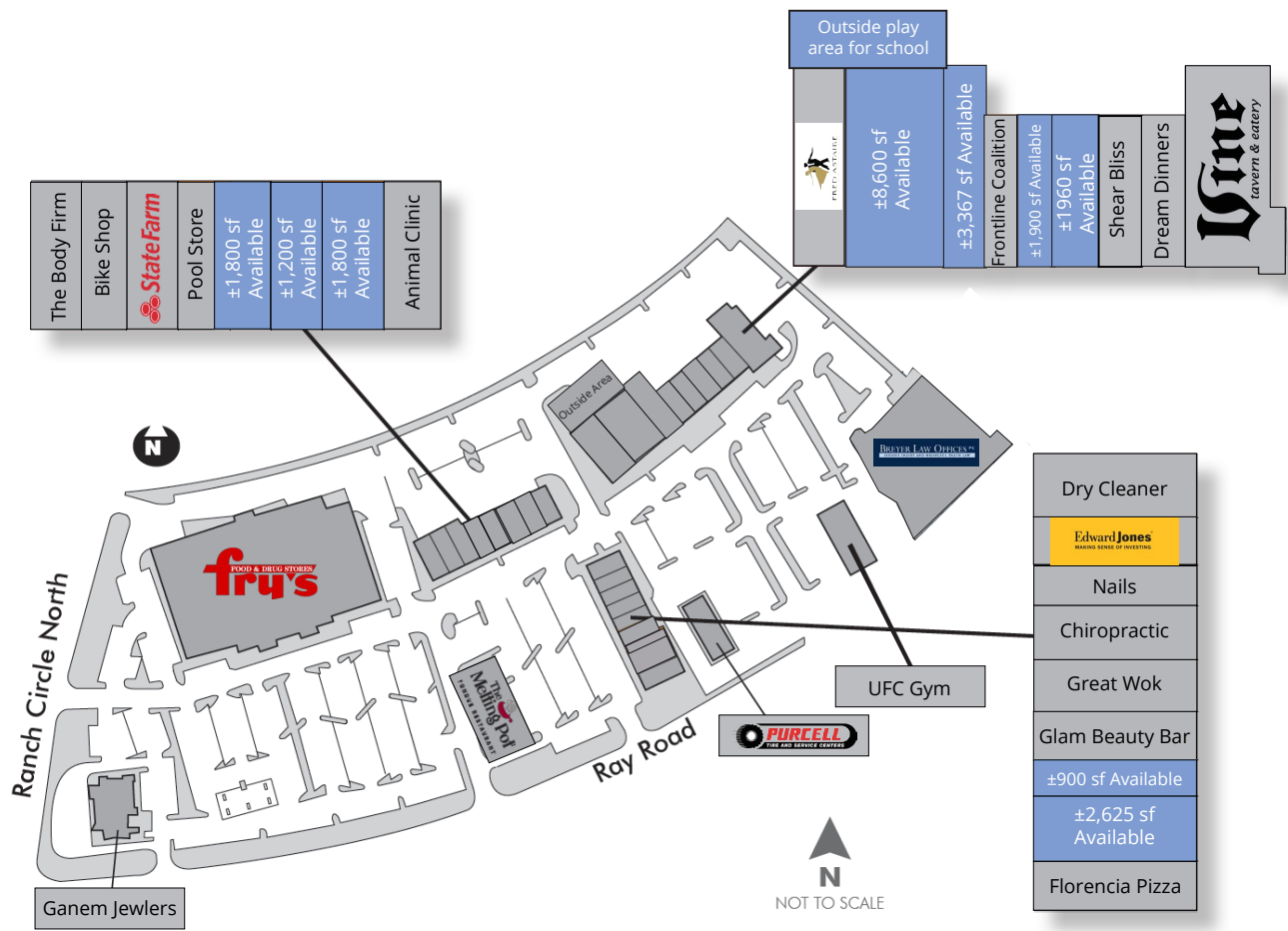
D 480 423 7958  
C 602 909 0957  
[james.decremer@avisonyoung.com](mailto:james.decremer@avisonyoung.com)

**Alec Miller**

D 480 423 7955  
C 480 531 0369  
[alec.miller@avisonyoung.com](mailto:alec.miller@avisonyoung.com)

# Site plan & availability

## Shop space available NEC Ray Road & Ranch Circle North

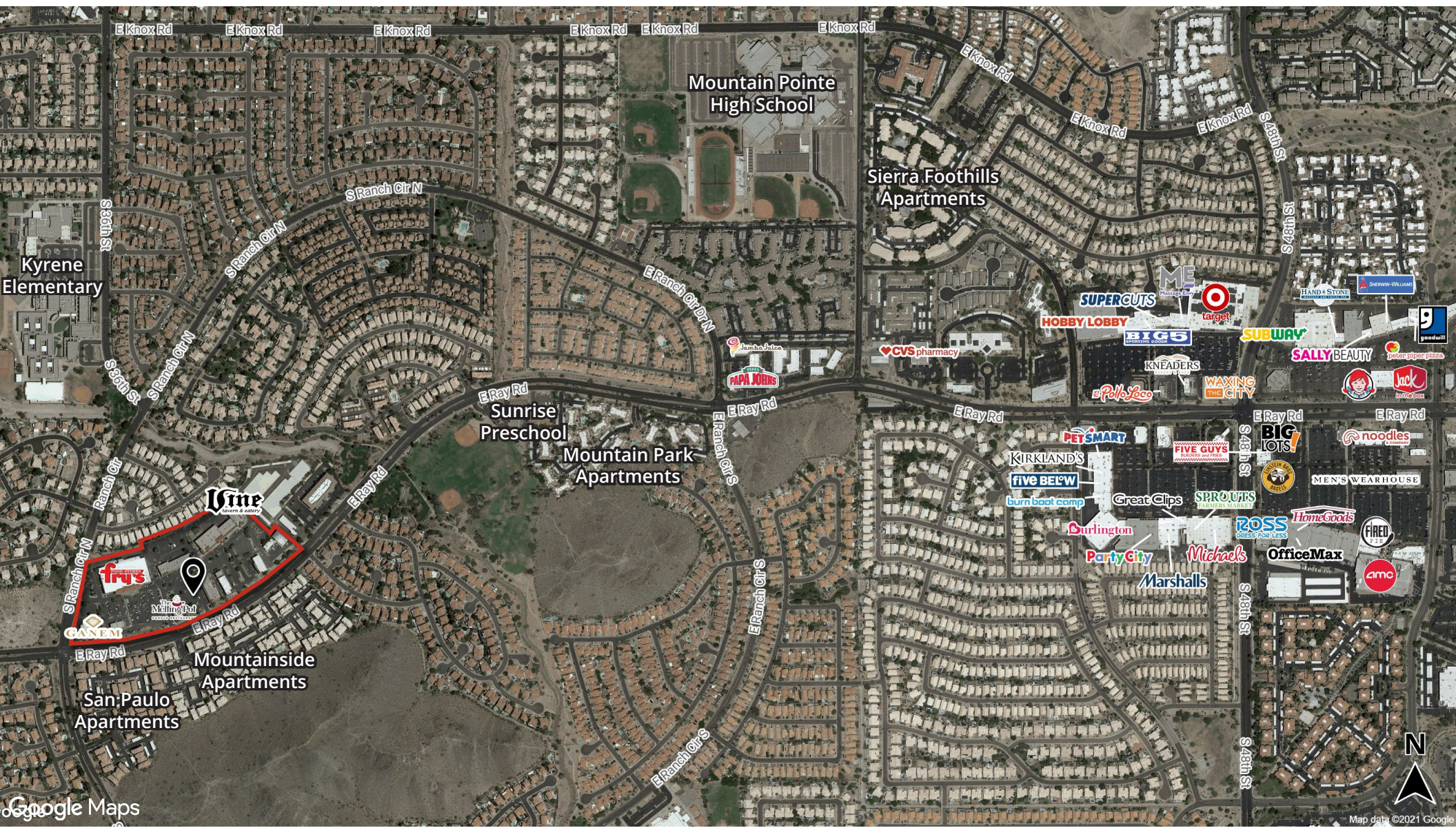


Availability	Size
Available	1,800 sf
Available - former insurance office	1,200 sf
Available - former jewelry store	1,800 sf
Available - former school	8,600 sf
Available - former day spa	3,367 sf
Available	1,900 sf
Available - former yoga studio	1,960 sf
Available	900 sf
Available - former dance studio	2,625 sf




# Trade area


Shop space available  
NEC Ray Road & Ranch Circle North








# Demographics

	1-mile	3-miles	5-miles
Population	<b>14,368</b>	<b>70,528</b>	<b>161,999</b>


	1-mile	3-miles	5-miles
Median age	<b>38.4</b>	<b>39.1</b>	<b>37.2</b>

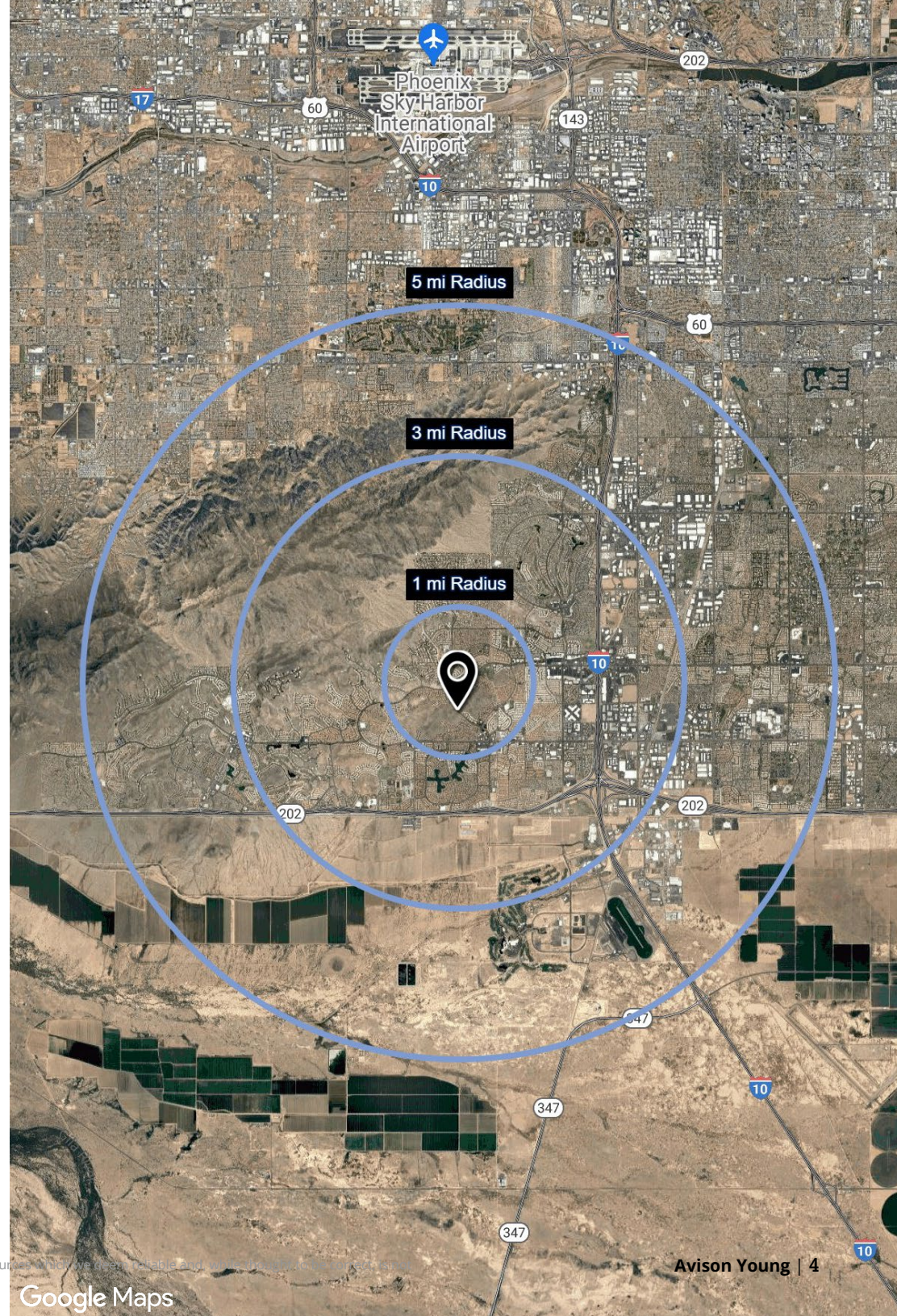
	1-mile	3-miles	5-miles
Daytime employment	<b>3,603</b>	<b>36,286</b>	<b>84,973</b>

	1-mile	3-miles	5-miles
Avg. HH income	<b>\$131,782</b>	<b>\$124,141</b>	<b>\$118,092</b>

	1-mile	3-miles	5-miles
HH units	<b>6,263</b>	<b>31,341</b>	<b>68,842</b>

## Traffic counts

	Ranch Circle North	<b>±30,338 cpd</b>
	Ray Road	<b>±59,300 cpd</b>







**Visit us online**  
[avisonyoung.com](http://avisonyoung.com)

© 2022 Avison Young - Arizona, Ltd. All rights reserved.

E. & O.E.: The information contained herein was obtained from sources which we deem reliable and, while thought to be correct, is not guaranteed by Avison Young.

2720 E Camelback Road | Suite 150 | Phoenix, AZ 85016 | 480 994 8155

**AVISON  
YOUNG**