

PORT OF HOUSTON

DOWNTOWN HOUSTON

BELTWAY
8

HORNBERGER ROAD

2.5 ACRES
AVAILABLE

SECURE ACCESS GATE

GARRETT ROAD

FOR LEASE

2.5 Acres of
Stabilized Yard

11211 Hornberger Rd
Houston, TX 77049

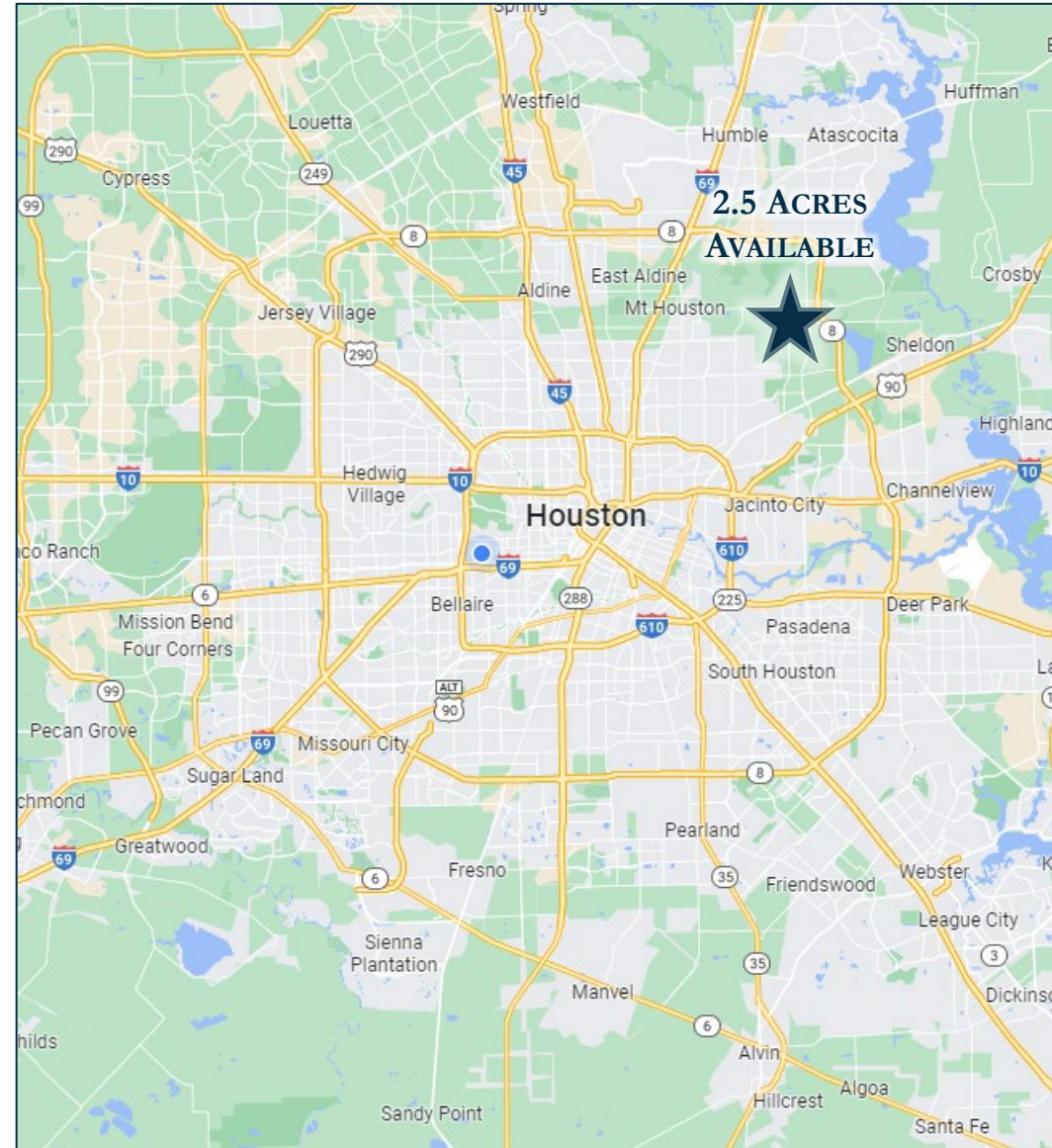
DRYPORT
CAPITAL

DRYPORT
CAPITAL

- **2.5 ACRES AVAILABLE**
- **HEAVY STABILIZATION**
- **FULLY FENCED WITH SECURE ACCESS GATE & SECURITY LIGHTING**
- **UTILITIES ON SITE**
- **EASY ACCESS TO BELTWAY 8, HWY 90, 59, I-45 & I-10**

SAM RAYBURN
713.373.0441
SRayburn@moodyrambinint.com

JIM AUTENREITH
713.773.5593
JAutenreith@moodyrambinint.com



DRYPORT
CAPITAL

PORT OF HOUSTON

BELTWAY
8

HORNBERGER ROAD

2.5 ACRES
AVAILABLE

GARRETT ROAD

SECURE ACCESS GATE

FOR LEASE

2.5 Acres of
Stabilized Yard

11211 Hornberger Rd
Houston, TX 77049

DRYPORT
CAPITAL

FOR LEASE

SITE PLAN

11211 HORNBERGER RD | 2.5 ACRES

YARD INFORMATION

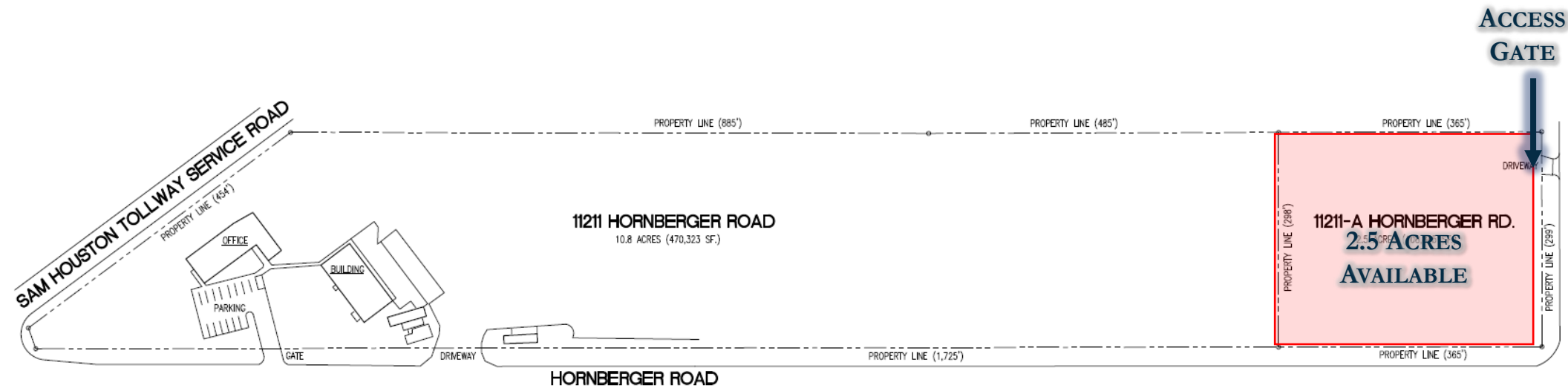
- 2.5 ACRE STABILIZED YARD
 - +/- 299 FT WIDE
 - +/- 365 FT LONG
- UTILITIES ON SITE
- FULLY FENCED
- SECURE GATE
- SECURITY LIGHTING
- PROFESSIONALLY MANAGED
- EASY ACCESS TO BELTWAY 8,
HWY 90, 59, I-45 & I-10



HORNBERGER ROAD

11211-A HORNBERGER ROAD SITE PLAN

0 70 140 280 FT



FOR LEASE

**2.5 Acres of
Stabilized Yard**

**11211 Hornberger Rd
Houston, TX 77049**

DRYPORT
CAPITAL



FOR LEASE

2.5 Acres of
Stabilized Yard

11211 Hornberger Rd
Houston, TX 77049

DRYPORT
CAPITAL