

Baringer Office Block

OFFICE BUILDING FOR LEASE



9373 Baringer Road, 3B Baton Rouge, LA 70817

Brent Garrett | 225.978.2071 | bgarrett@beaubox.com



Baringer Office Block

9373 Baringer Road, 3B Baton Rouge, LA 70817

PROPERTY SUMMARY



Location Description

The Baringer Office Block is located at the intersection of Airline Hwy and Baringer Foreman Road, with close proximity to Woman's Hospital and Long Farm Village. This office park has access from both Baringer Foreman Road and Airline Hwy.

Property Highlights

- Adjacent to Long Farm Village
- Dual Access from Baringer Foreman Road and Airline Hwy
- Close proximity to Woman's Hospital, Highland Rd., Pecue Lane, and Interstate 10

Brent Garrett

225.978.2071
bgarrett@beaubox.com

Broker of Record, Beau J. Box; Licensed by the Louisiana Real Estate Commission, Mississippi Real Estate Commission, Alabama Real Estate Commission and Florida Real Estate Commission, USA. This information has been secured from sources we believe to be reliable, but we make no representations or warranties, expressed or implied, as to the accuracy of the information. References to square footage or age are approximate. Buyer must verify the information and bears all risk for any inaccuracies. © Beau Box Commercial Real Estate. | December 19, 2022

Spaces

9373 Baringer Foreman Rd

Lease Rate

\$21.00 SF/month

Space Size

1,818 SF

Demographics

1 Mile

3 Miles

5 Miles

Total Households

1,483

13,233

39,680

Total Population

3,666

33,910

100,105

Average HH Income

\$85,539

\$96,145

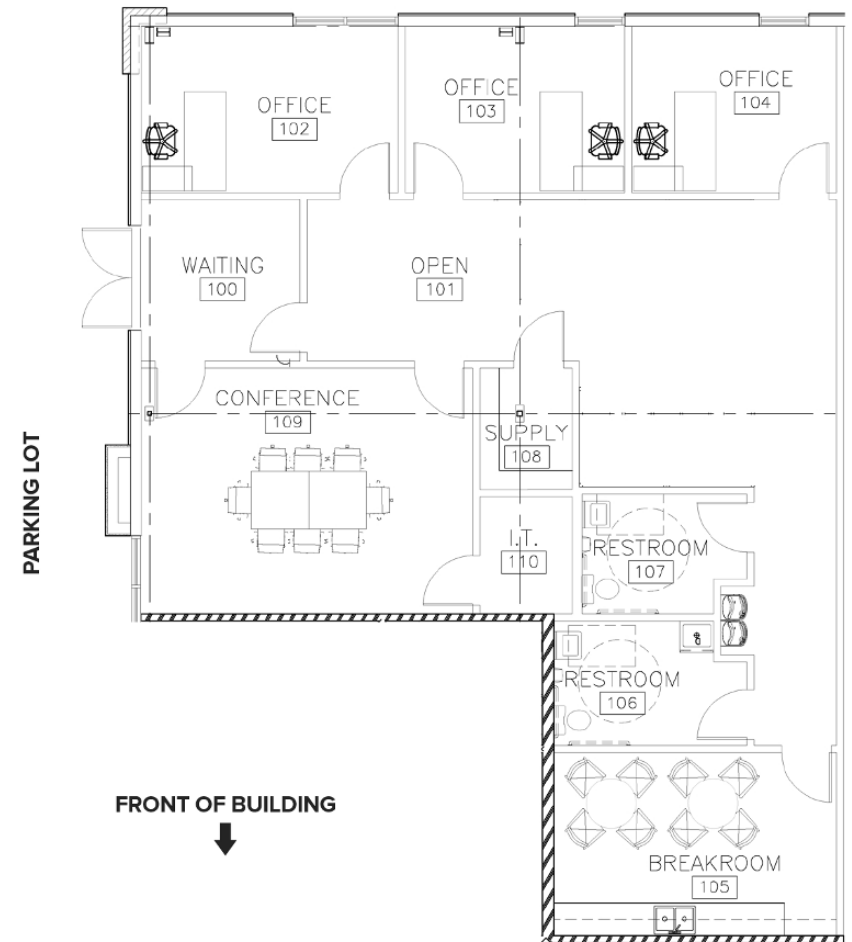
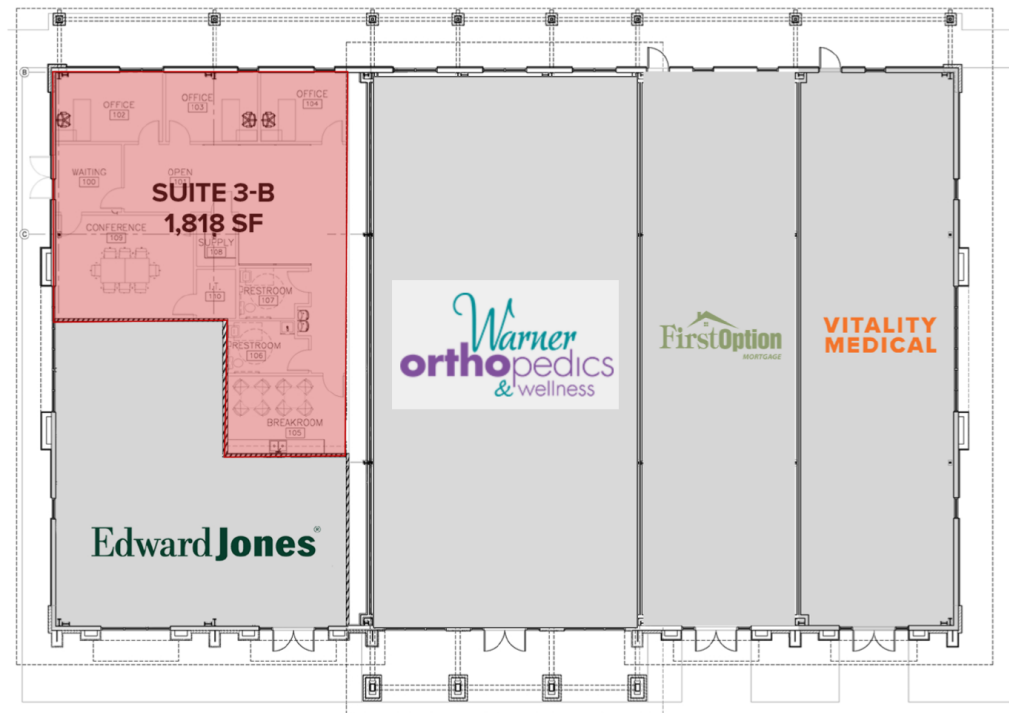
\$91,325



Baringer Office Block
9373 Baringer Road, 3B Baton Rouge, LA 70817

FLOOR PLANS

**BARINGER OFFICE BLOCK
SUITE 3-B**



Brent Garrett
225.978.2071
bgarrett@beaubox.com

Broker of Record, Beau J. Box; Licensed by the Louisiana Real Estate Commission, Mississippi Real Estate Commission, Alabama Real Estate Commission and Florida Real Estate Commission, USA. This information has been secured from sources we believe to be reliable, but we make no representations or warranties, expressed or implied, as to the accuracy of the information. References to square footage or age are approximate. Buyer must verify the information and bears all risk for any inaccuracies. © Beau Box Commercial Real Estate. | December 19, 2022



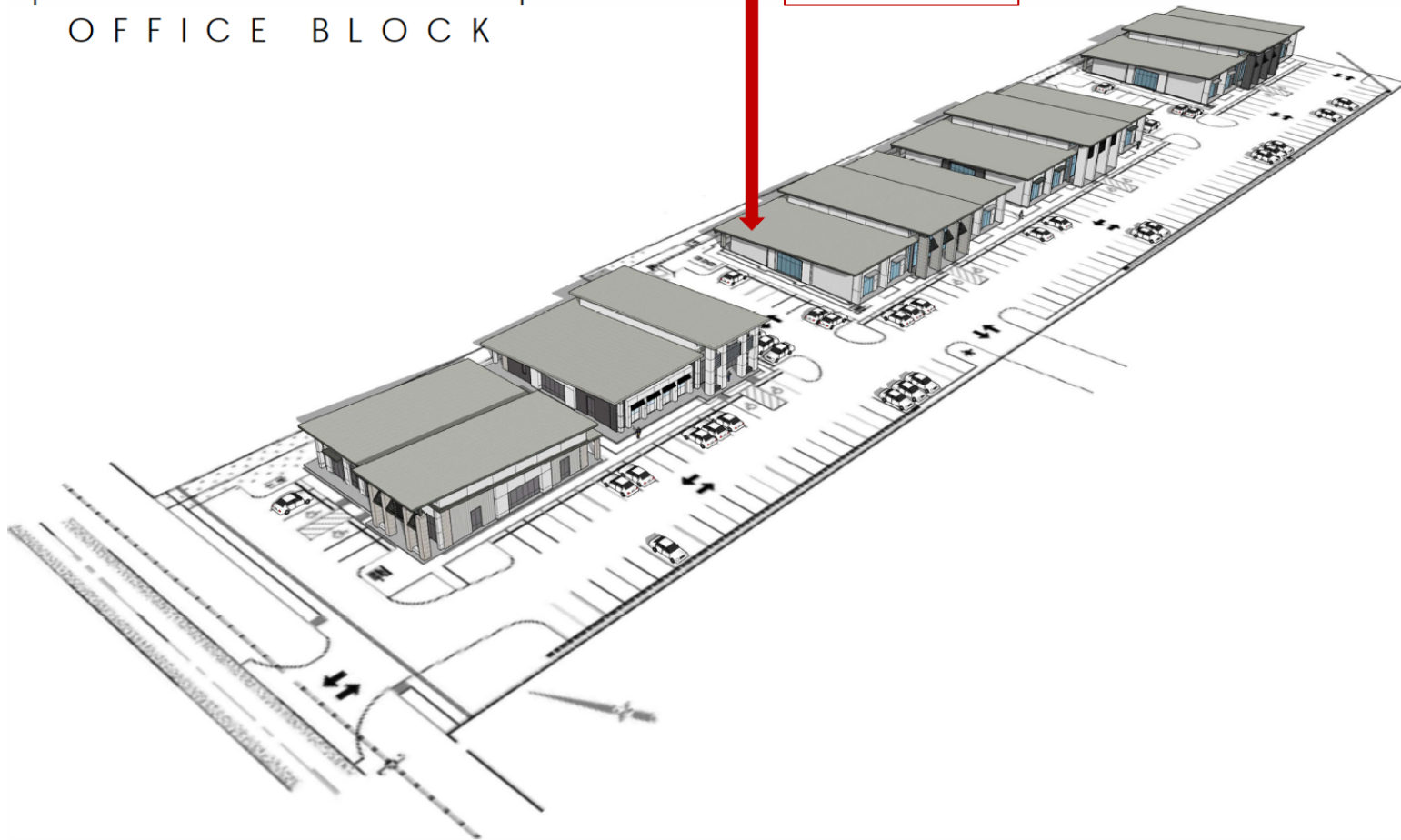
Baringer Office Block
9373 Baringer Road, 3B Baton Rouge, LA 70817

SITE PLANS



| B A R I N G E R |
O F F I C E B L O C K

**FOR LEASE
SUITE 3-B
1,818 SF**



Brent Garrett
225.978.2071
bgarrett@beaibox.com

Broker of Record, Beau J. Box; Licensed by the Louisiana Real Estate Commission, Mississippi Real Estate Commission, Alabama Real Estate Commission and Florida Real Estate Commission, USA. This information has been secured from sources we believe to be reliable, but we make no representations or warranties, expressed or implied, as to the accuracy of the information. References to square footage or age are approximate. Buyer must verify the information and bears all risk for any inaccuracies. © Beau Box Commercial Real Estate. | December 19, 2022



Baringer Office Block
9373 Baringer Road, 3B Baton Rouge, LA 70817

INTERIOR PHOTOS



Brent Garrett
225.978.2071
bgarrett@beaibox.com

Broker of Record, Beau J. Box; Licensed by the Louisiana Real Estate Commission, Mississippi Real Estate Commission, Alabama Real Estate Commission and Florida Real Estate Commission, USA. This information has been secured from sources we believe to be reliable, but we make no representations or warranties, expressed or implied, as to the accuracy of the information. References to square footage or age are approximate. Buyer must verify the information and bears all risk for any inaccuracies. © Beau Box Commercial Real Estate. | December 19, 2022



Baringer Office Block

9373 Baringer Road, 3B Baton Rouge, LA 70817

LOCATION MAP



Brent Garrett
225.978.2071
bgarrett@beaubox.com

Broker of Record, Beau J. Box; Licensed by the Louisiana Real Estate Commission, Mississippi Real Estate Commission, Alabama Real Estate Commission and Florida Real Estate Commission, USA. This information has been secured from sources we believe to be reliable, but we make no representations or warranties, expressed or implied, as to the accuracy of the information. References to square footage or age are approximate. Buyer must verify the information and bears all risk for any inaccuracies. © Beau Box Commercial Real Estate. | December 19, 2022

