

±29,397 SF & SHOP SPACES IN A VALLARTA GROCERY ANCHORED CENTER FOR LEASE

12353 Mariposa Rd D2, Victorville, CA 92395



ROXY KLEIN

Vice President, Retail Leasing & Sales
 O: 909.576.4259 | C: 909.576.4259
 roxy@progressiverep.com
 DRE #01264392

MONICA DAL BIANCO - WEST

Senior Retail Specialist
 O: 909.230.4500 | C: 714.483.4682
 monica@progressiverep.com
 DRE #01878514

Presented By



ROXY KLEIN

Vice President, Retail Leasing & Sales

T 909.576.4259 | **C** 909.576.4259

roxy@progressiverep.com

CalDRE #01264392



MONICA DAL BIANCO - WEST

Senior Retail Specialist

T 909.230.4500 | **C** 714.483.4682

monica@progressiverep.com

CalDRE #01878514

Confidentiality & Disclaimer

EACH PARTY SHALL CONDUCT ITS OWN INDEPENDENT INVESTIGATION AND DUE DILIGENCE

Any party contemplating a lease or sale transaction is urged to verify all information and to conduct their own inspections and investigations including through appropriate third party independent professionals selected by such party.

All financial data, building information, zoning information, demographics, and other information that a tenant or buyer may depend upon for making their business decisions should be verified and confirmed by the party including by obtaining and reading applicable documents and reports and consulting appropriate independent professionals. Any information contained in this marketing brochure was obtained from sources that we deemed reliable. While we do not doubt its accuracy, we do not make any guaranty, warranty, or representation about the accuracy of the information contained herein.

Progressive Real Estate Partners does not serve as a financial or business advisor to any party regarding any proposed transaction.

Legal questions should be discussed by the party with an attorney. Tax questions should be discussed by the party with a certified public accountant or tax attorney. Title questions should be discussed by the party with a title officer or attorney. Questions regarding the condition of the property and whether the property complies with applicable governmental requirements should be discussed by the party with appropriate engineers, architects, contractors, other consultants and governmental agencies.

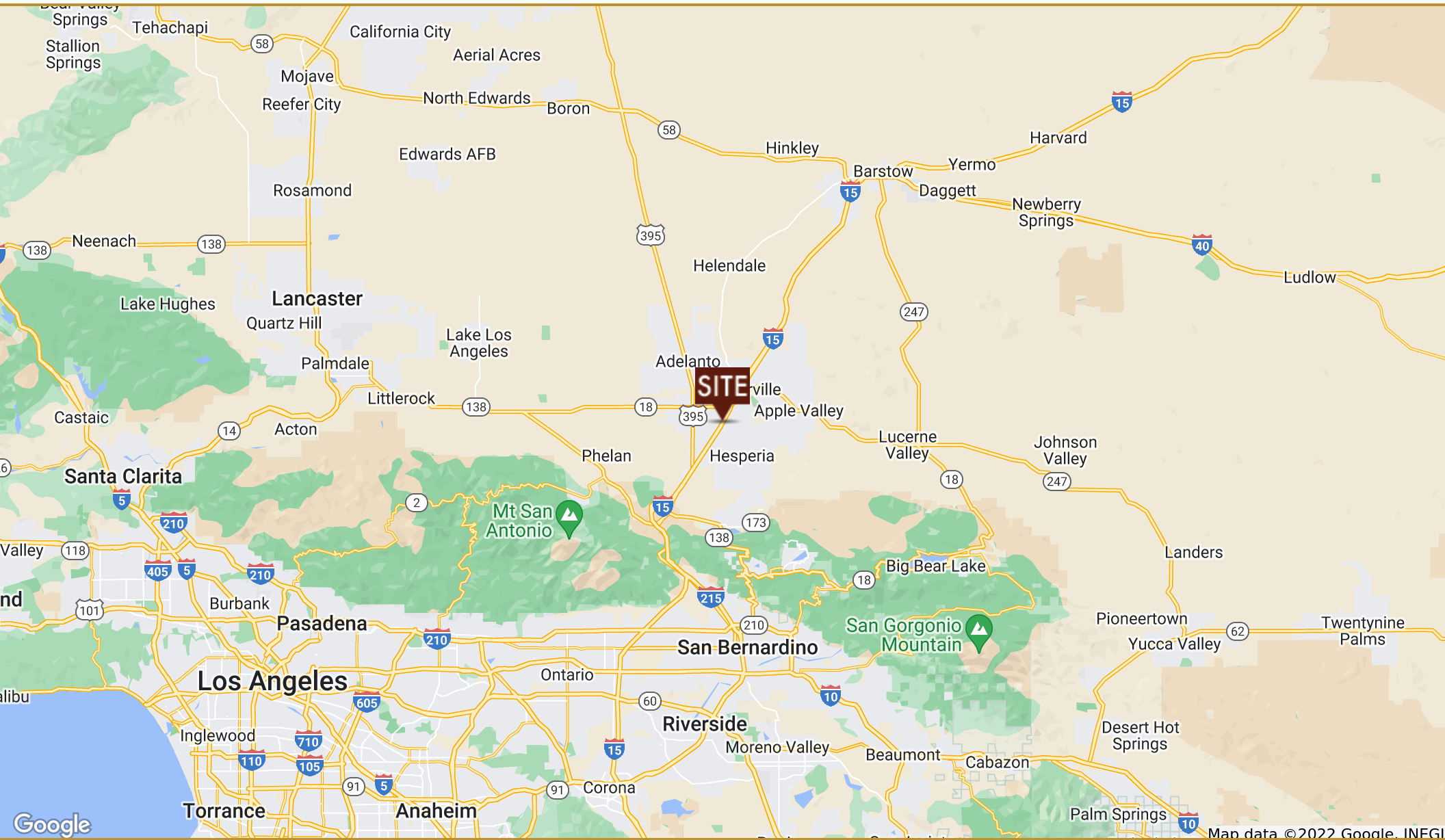
Materials and information from any source, whether written or verbal, that may be furnished for review are not a substitute for a party's active conduct of its own due diligence to determine these and other matters of significance to such party.

PROPERTY HIGHLIGHTS



- ±29,397 SF Free Standing 10 Screen Movie Theater for Lease
- ±1,080 - ±2,400 SF second generation retail spaces for lease
- Anchored by a ±75,040 SF Vallarta Grocery Store that according to SiteSeer Pro is their #2 location
- Co Jr. Anchors include Planet Fitness, Best Deal Furniture, & Inland Empire Health Plan with over 1.5M members
- Entire ±166,417 SF shopping center has excellent visibility from the I-15 Freeway which averages over 98,000 CPD
- Population of over 297,000 people within a 20 minute drive time
- Potential prime panel placement on both sides of an impressive pylon sign visible from the I-15 Freeway
- Conveniently located in close proximity to the Mall of Victor Valley that includes Macy's, Dicks Sporting Goods, Barnes & Noble, JC Penney, and 100 more stores

REGIONAL MAP



SITE PLAN

12353 Mariposa Road Victorville, CA 92395		
UNIT	TENANT	SF
A1/A3	The Love Store	7,500
B-1	Planet Fitness	23,980
C-1	Best Deal Furniture	23,325
MAJA1	IEHP	23,547
D-1	Dentist	1,800
D-2	Available	1,200-2,400
E-1	Available	29,397
F-1	Italian Bakery	2,190
F-2	Tikal Express Taxes	810
F-3	Available	1,080
F-4	Zen Beauty Nails	1,080
F-5	Aqua Pura	2,160
F-7	Oscar's Barbershop	1,080
F-8	Smoke Shop	1,080
F-9	Taxes Immigration	1,080
F-10	Hair Salon	1,080
F-11	Pho Saigon Le	1,080
F-12/13	Michoacana	2,160
F-14	Yey's Place	1,080
F-15	Casa Rodeo Boots	1,080
Pad 1	Land Size	25,700
Pad 2	Pollo Campero	23,958

Available
 Not A Part



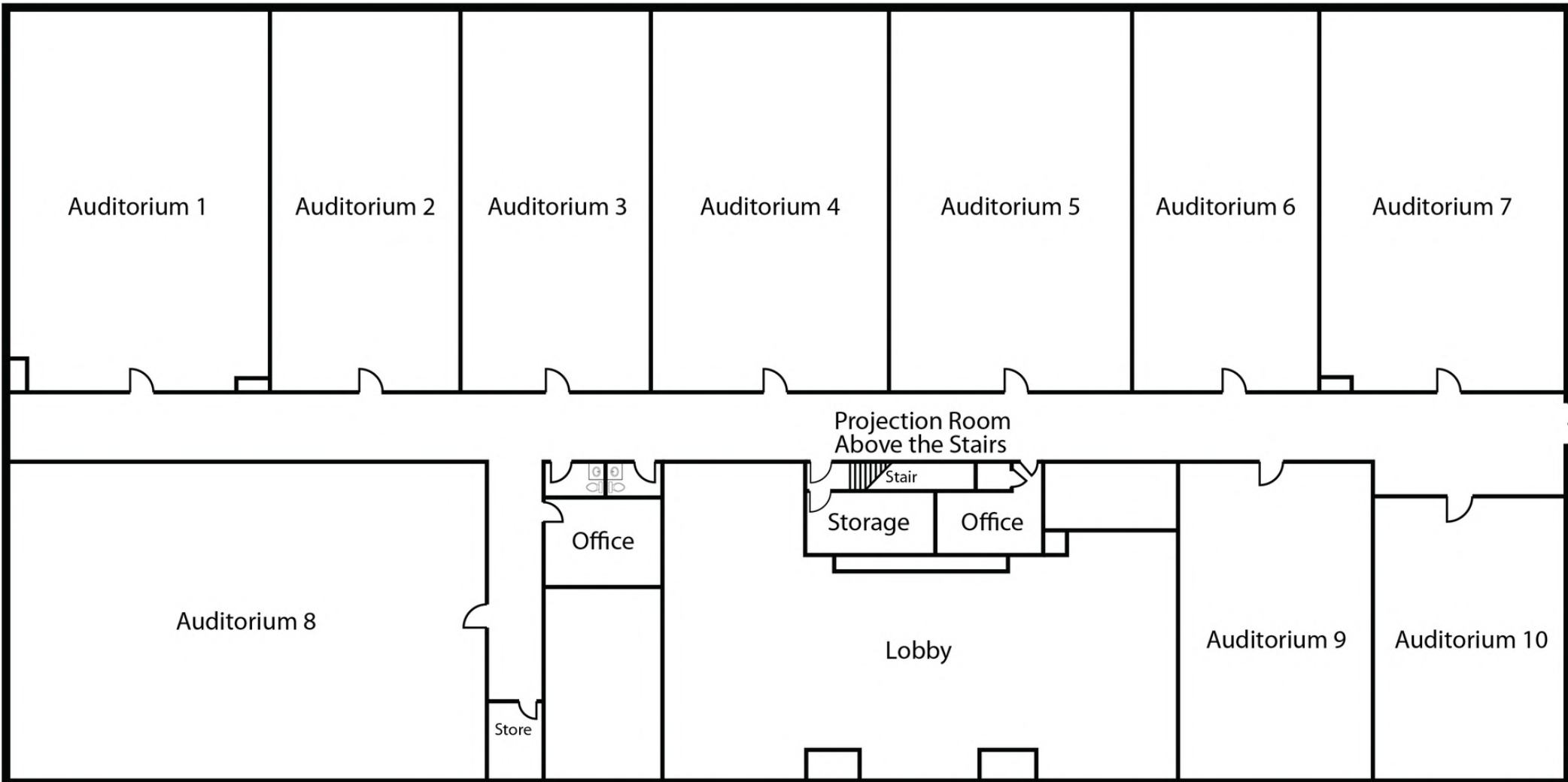
THEATER BUILDING FOR LEASE



THEATER INTERIOR PHOTOS



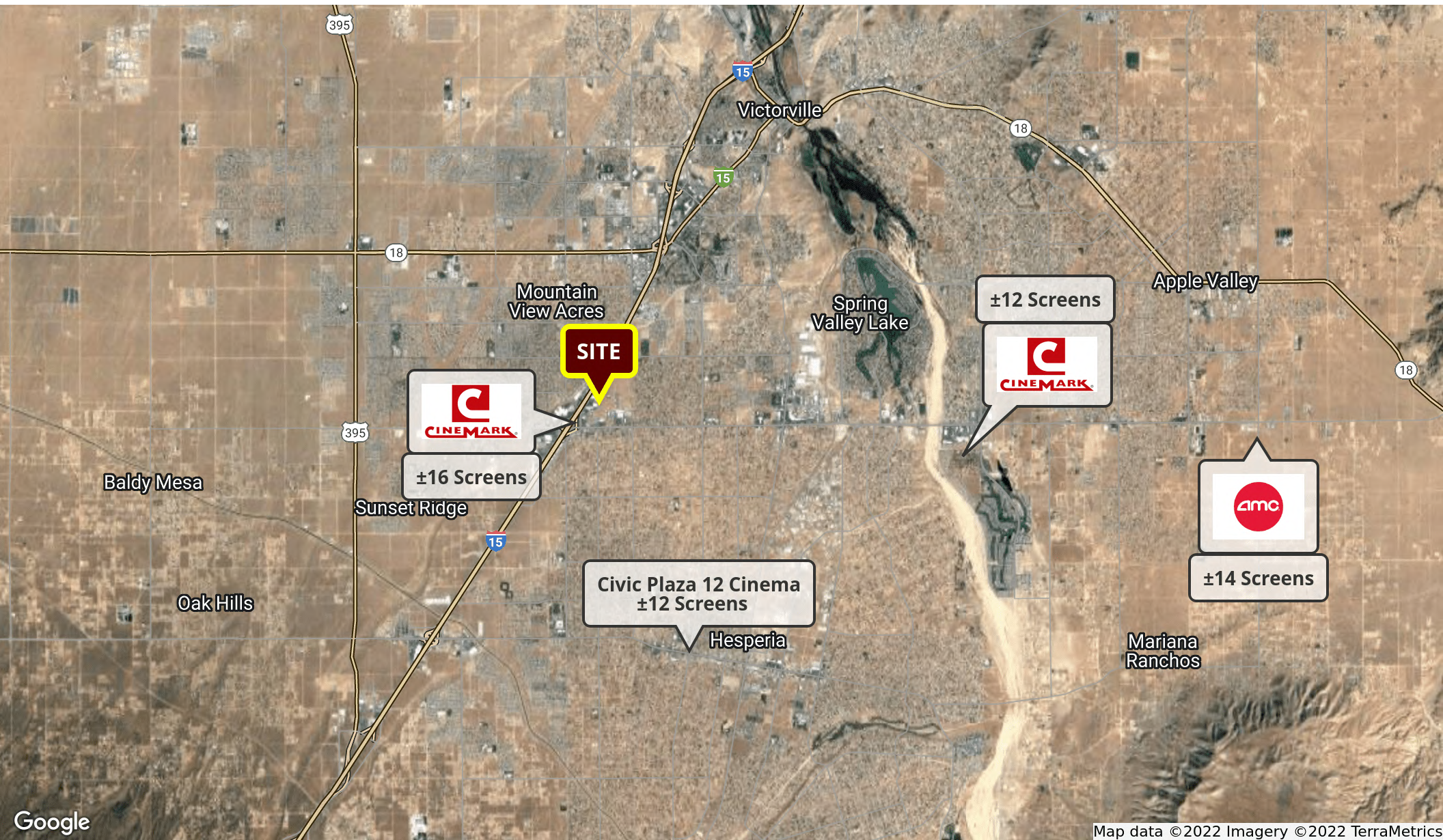
FLOOR PLAN



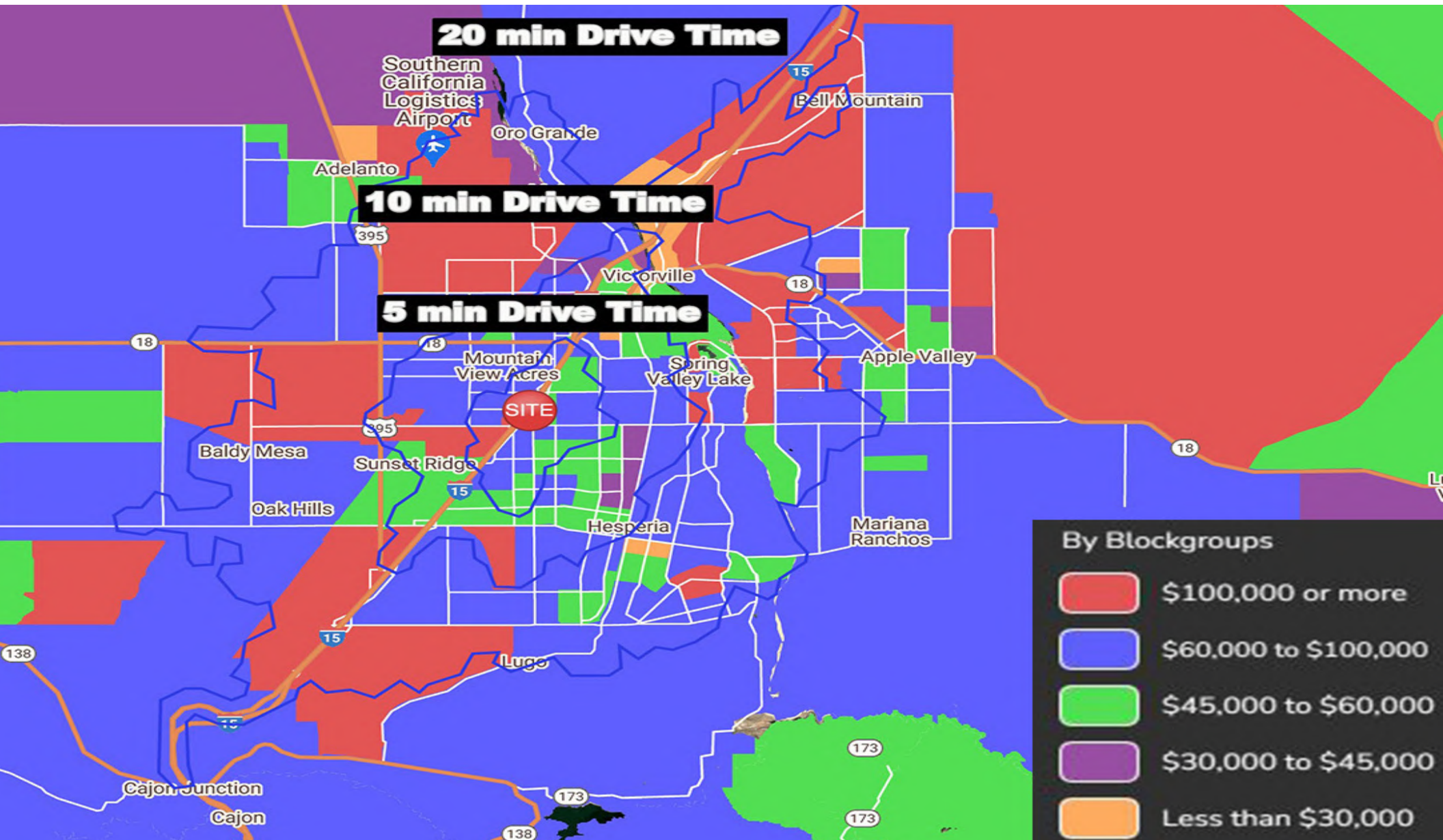
RETAILER MAP



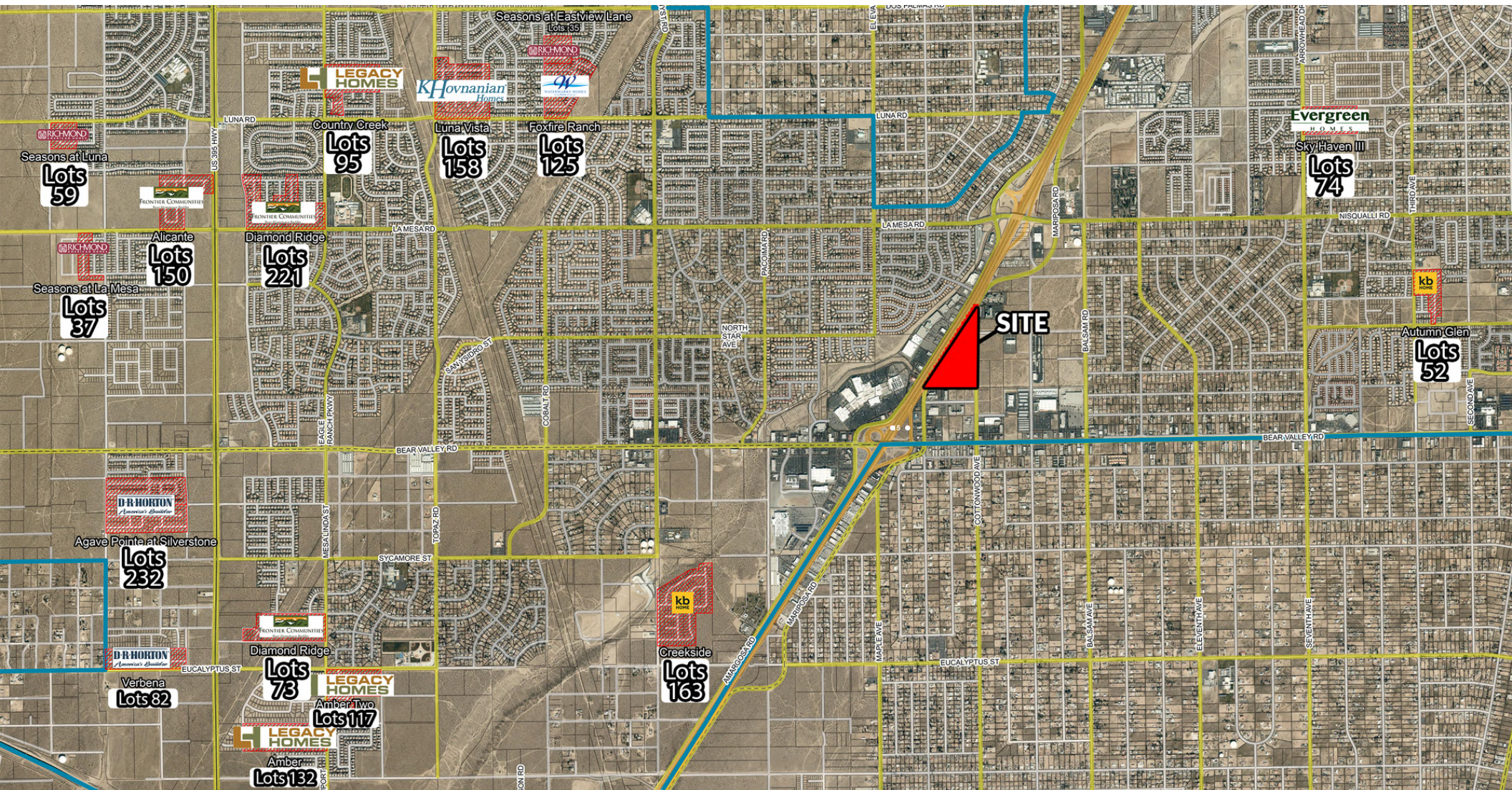
MOVIE THEATER COMPETITION MAP



AVERAGE HOUSEHOLD INCOME MAP



ACTIVE FAMILY HOME DEVELOPMENTS



DEMOGRAPHICS

	5 min	10 min	20 min
<u>POPULATION</u>			
2023 Total Population	20,442	135,157	297,872
2023 Median Age	33.0	32.8	33.6
2023 Total Households	6,054	38,287	85,807
2023 Average Household Size	3.4	3.5	3.4
<u>INCOME</u>			
2023 Average Household Income	\$92,743	\$95,020	\$99,159
2023 Median Household Income	\$71,629	\$69,744	\$75,604
2023 Per Capita Income	\$27,530	\$26,98	\$28,659
<u>BUSINESS SUMMARY</u>			
2023 Total Businesses	971	4,021	7,387
2023 Total Employees	7,167	28,878	52,505
RACE POPULATION			
White	34.6%	33.8%	36.3%
Black or African American	11%	12.9%	12.6%
Asian	4.4%	4.7%	4.6%
Hispanic	58.5%	57.9%	55.4%
Other	31.5%	31.0%	29.0%

