

OFFICE FOR LEASE

PRIVATE OFFICE SUITE

118 Middle St, Manchester, NH 03101



PROPERTY DESCRIPTION

Space available for lease. This recently renovated office suite is a short walk to downtown Manchester and is located in a mixed use neighborhood. The unit has a private bathroom, on-street parking and private entrance. It would be perfect for a single office user or professional looking for a centrally located office on the ground floor, which is easily accessible to clients and customers.

PROPERTY HIGHLIGHTS

- Private entrance, visibility
- Right off Middle Street, great proximity to downtown
- Off-street parking, unit is located on the ground level

OFFERING SUMMARY

Lease Rate:	Negotiable
Number of Units:	1
Available SF:	300 SF - Unit 118
Entrance:	Private, off Middle St
Building Size:	300 SF

DEMOGRAPHICS	1 MILE	3 MILES	5 MILES
Total Households	10,842	48,576	66,914
Total Population	26,199	117,820	165,711
Average HH Income	\$47,496	\$62,292	\$69,582

We obtained the information above from sources we believe to be reliable. However, we have not verified its accuracy and make no guarantee, warranty or representation about it. It is submitted subject to the possibility of errors, omissions, change of price, rental or other conditions, prior sale, lease or financing, or withdrawal without notice. We include projections, opinions, assumptions or estimates for example only, and they may not represent current or future performance of the property. You and your tax and legal advisors should conduct your own investigation of the property and transaction.

VIKTORIA ALKOVA
Commercial Real Estate Agent, MiCP
O: 603.610.8500
C: 646.577.1194
viktoriam@kwclcg.com
NH #074657

DAVE GARVEY
Managing Director
O: 603.610.8523
C: 603.491.2854
davegarvey@kwcommercial.com
NH #004637

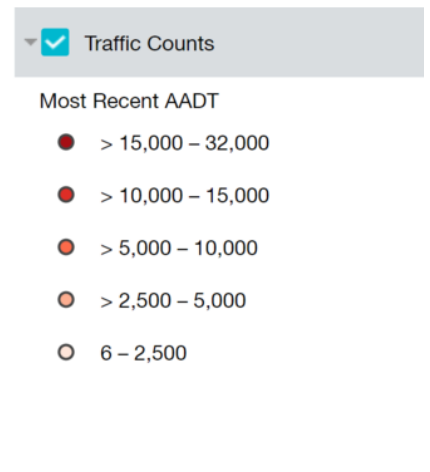
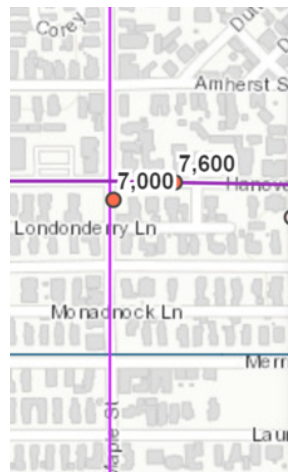
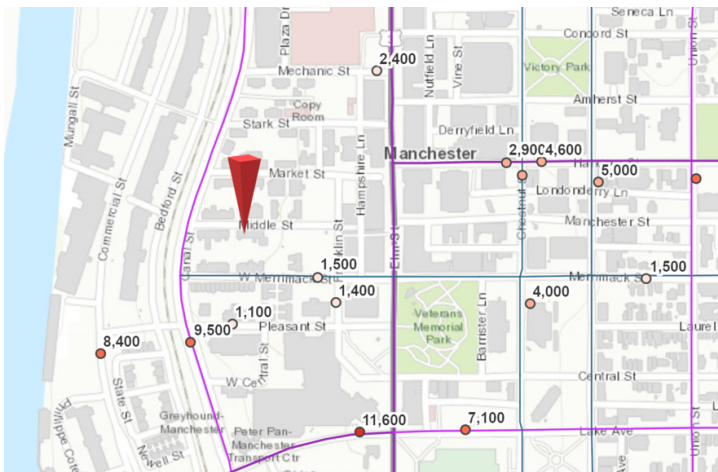
KELLER WILLIAMS COASTAL REALTY
603.610.8500
750 Lafayette Rd.
Suite 201 - Coastal Land & Commercial Group
Portsmouth, NH 03801

Each Office Independently Owned and Operated kwclcg.com

OFFICE FOR LEASE

PRIVATE OFFICE SUITE

118 Middle St, Manchester, NH 03101



We obtained the information above from sources we believe to be reliable. However, we have not verified its accuracy and make no guarantee, warranty or representation about it. It is submitted subject to the possibility of errors, omissions, change of price, rental or other conditions, prior sale, lease or financing, or withdrawal without notice. We include projections, opinions, assumptions or estimates for example only, and they may not represent current or future performance of the property. You and your tax and legal advisors should conduct your own investigation of the property and transaction.

VIKTORIA ALKOVA
Commercial Real Estate Agent, MiCP
O: 603.610.8500
C: 646.577.1194
viktoria@kwclcg.com
NH #074657

DAVE GARVEY
Managing Director
O: 603.610.8523
C: 603.491.2854
davegarvey@kwcommercial.com
NH #004637

KELLER WILLIAMS COASTAL REALTY
603.610.8500
750 Lafayette Rd.
Suite 201 - Coastal Land & Commercial Group
Portsmouth, NH 03801

Each Office Independently Owned and Operated kwclcg.com

Neighborhood: Economic Stats and Charts

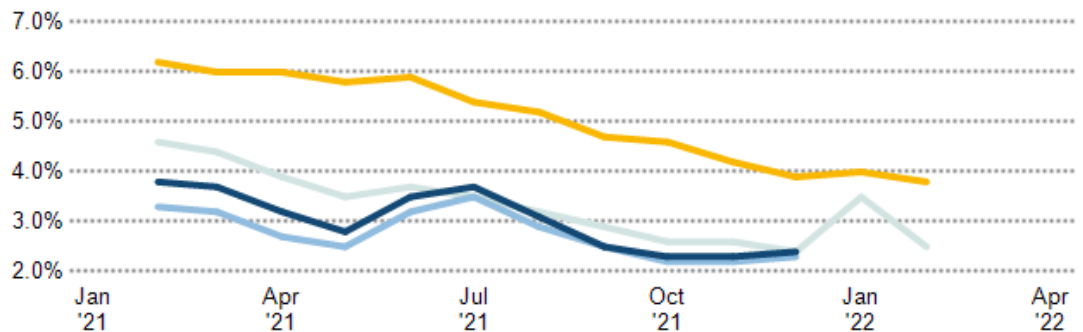
	03101	Manchester	Hillsborough County	New Hampshire	USA
Income Per Capita	\$34,865	\$31,951	\$40,955	\$40,003	\$34,103
Median Household Income	\$35,395	\$60,711	\$81,460	\$76,768	\$62,843
Unemployment Rate	—	2.4%	2.3%	2.5%	3.8%
Unemployment Number	—	1.49K	5.27K	18.8K	6.27M
Employment Number	—	—	—	743K	158M
Labor Force Number	—	62.6K	233K	762K	164M

Unemployment Rate

This chart shows the unemployment trend in the area of your search. The unemployment rate is an important driver behind the housing market.

Data Source: Bureau of Labor Statistics

Update Frequency: Monthly



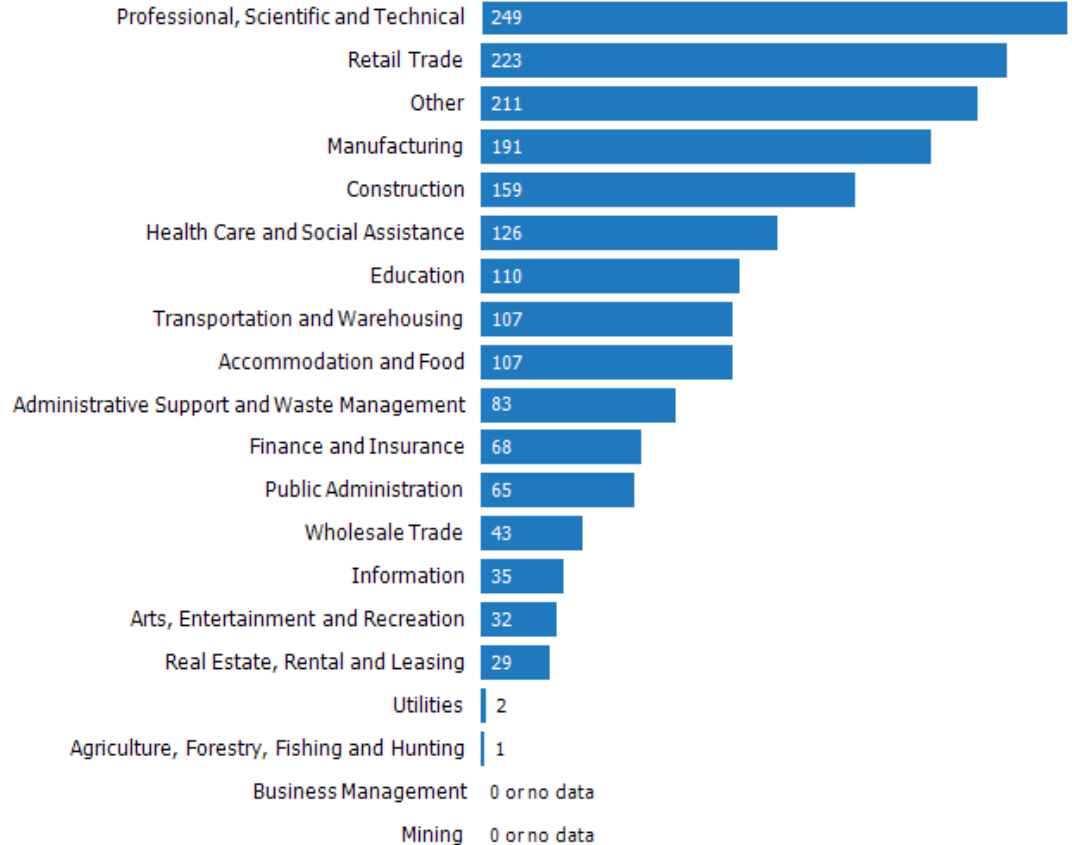
Occupational Categories

This chart shows categories of employment within an area.

Data Source: U.S. Census

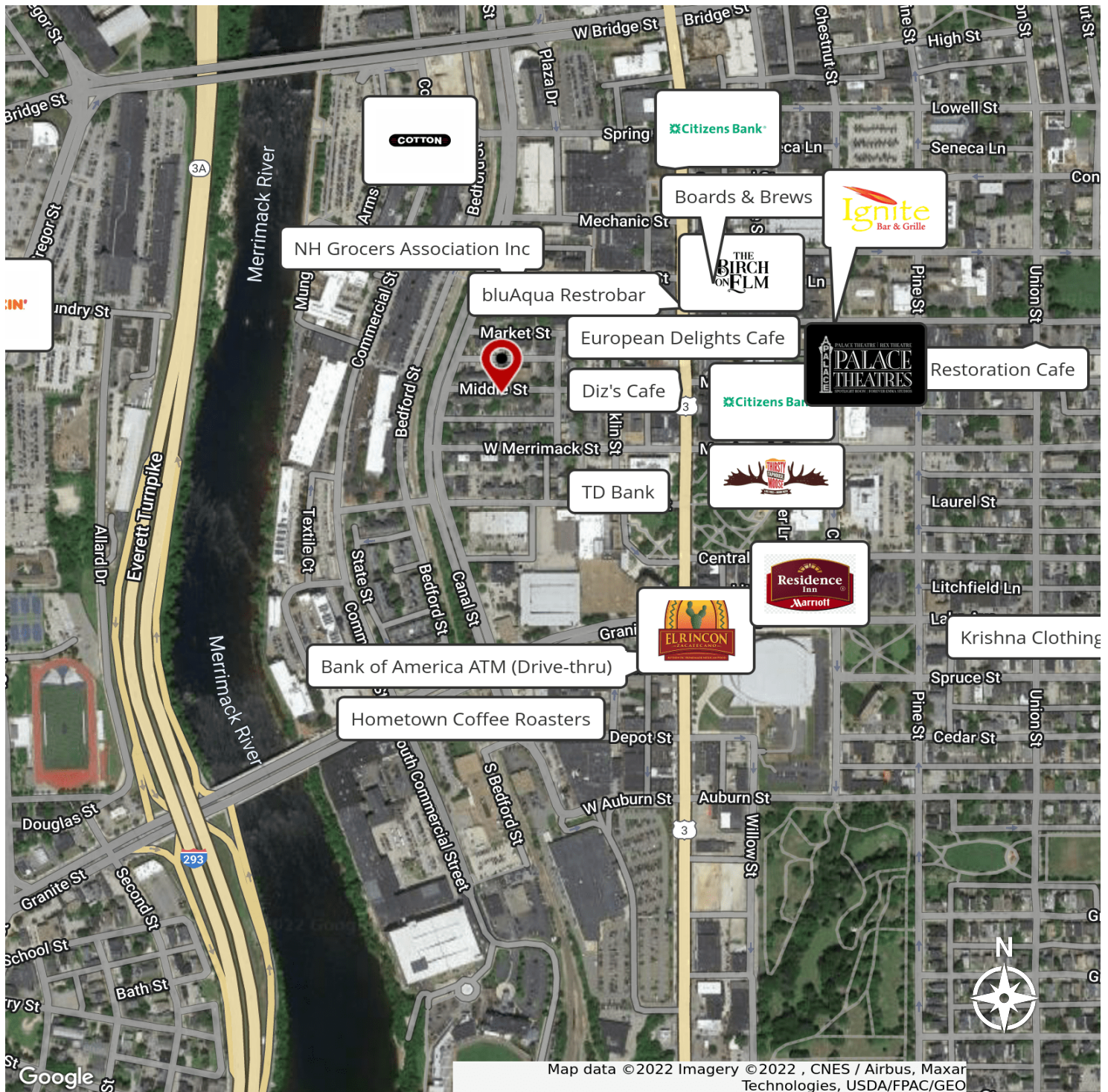
Update Frequency: Annually

03101



PRIVATE OFFICE SUITE

118 Middle St, Manchester, NH 03101



We obtained the information above from sources we believe to be reliable. However, we have not verified its accuracy and make no guarantee, warranty or representation about it. It is submitted subject to the possibility of errors, omissions, change of price, rental or other conditions, prior sale, lease or financing, or withdrawal without notice. We include projections, opinions, assumptions or estimates for example only, and they may not represent current or future performance of the property. You and your tax and legal advisors should conduct your own investigation of the property and transaction.

VIKTORIA ALKOVA
Commercial Real Estate Agent, MiPC
O: 603.610.8500
C: 646.577.1194
viktoria@kwclcg.com
NH #074657

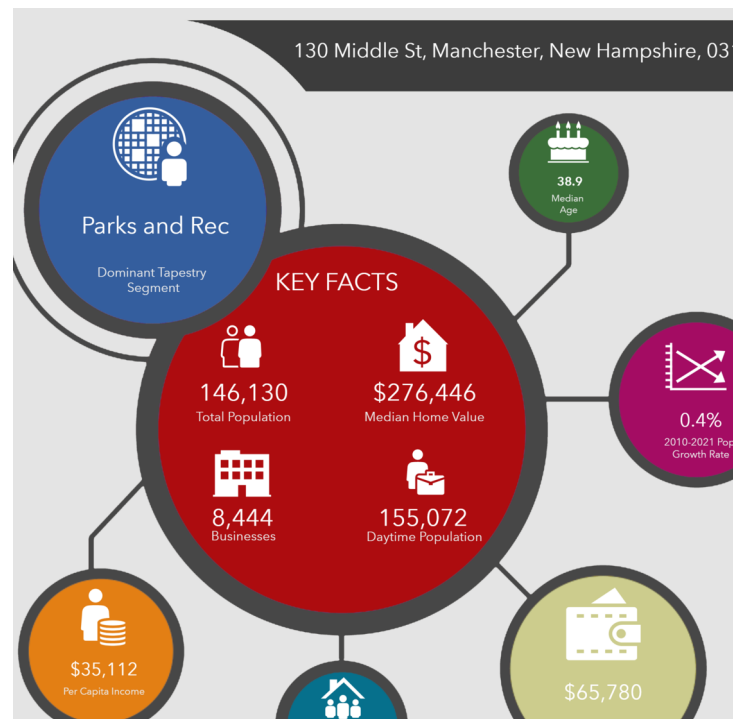
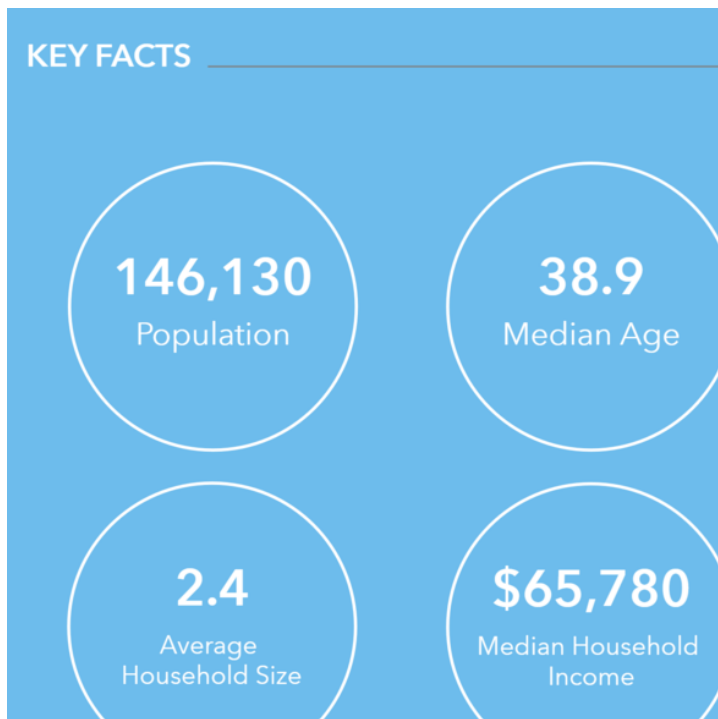
DAVE GARVEY
Managing Director
O: 603.610.8523
C: 603.491.2854
davegarvey@kwcommercial.com
NH #004637

KELLER WILLIAMS COASTAL REALTY
603.610.8500
750 Lafayette Rd.
Suite 201 - Coastal Land & Commercial Group
Portsmouth, NH 03801

Each Office Independently Owned and Operated kwclcg.com

PRIVATE OFFICE SUITE

118 Middle St, Manchester, NH 03101



We obtained the information above from sources we believe to be reliable. However, we have not verified its accuracy and make no guarantee, warranty or representation about it. It is submitted subject to the possibility of errors, omissions, change of price, rental or other conditions, prior sale, lease or financing, or withdrawal without notice. We include projections, opinions, assumptions or estimates for example only, and they may not represent current or future performance of the property. You and your tax and legal advisors should conduct your own investigation of the property and transaction.

VIKTORIA ALKOVA
Commercial Real Estate Agent, MiCP
O: 603.610.8500
C: 646.577.1194
viktorija@kwclcg.com
NH #074657

DAVE GARVEY
Managing Director
O: 603.610.8523
C: 603.491.2854
davegarvey@kwcommercial.com
NH #004637

KELLER WILLIAMS COASTAL REALTY
603.610.8500
750 Lafayette Rd.
Suite 201 - Coastal Land & Commercial Group
Portsmouth, NH 03801

Each Office Independently Owned and Operated kwclcg.com