

FOR LEASE

1275 E. Kemper Road Cincinnati, OH 45246



NAIBergman Office | 11,141 SF

- Former Day-Care available for Lease
- 11,141 SF
- Large parking Lot
- Many internal upgrades
- Play Grounds in Place
- Can be easily converted to Office or Medical use
- A must see!

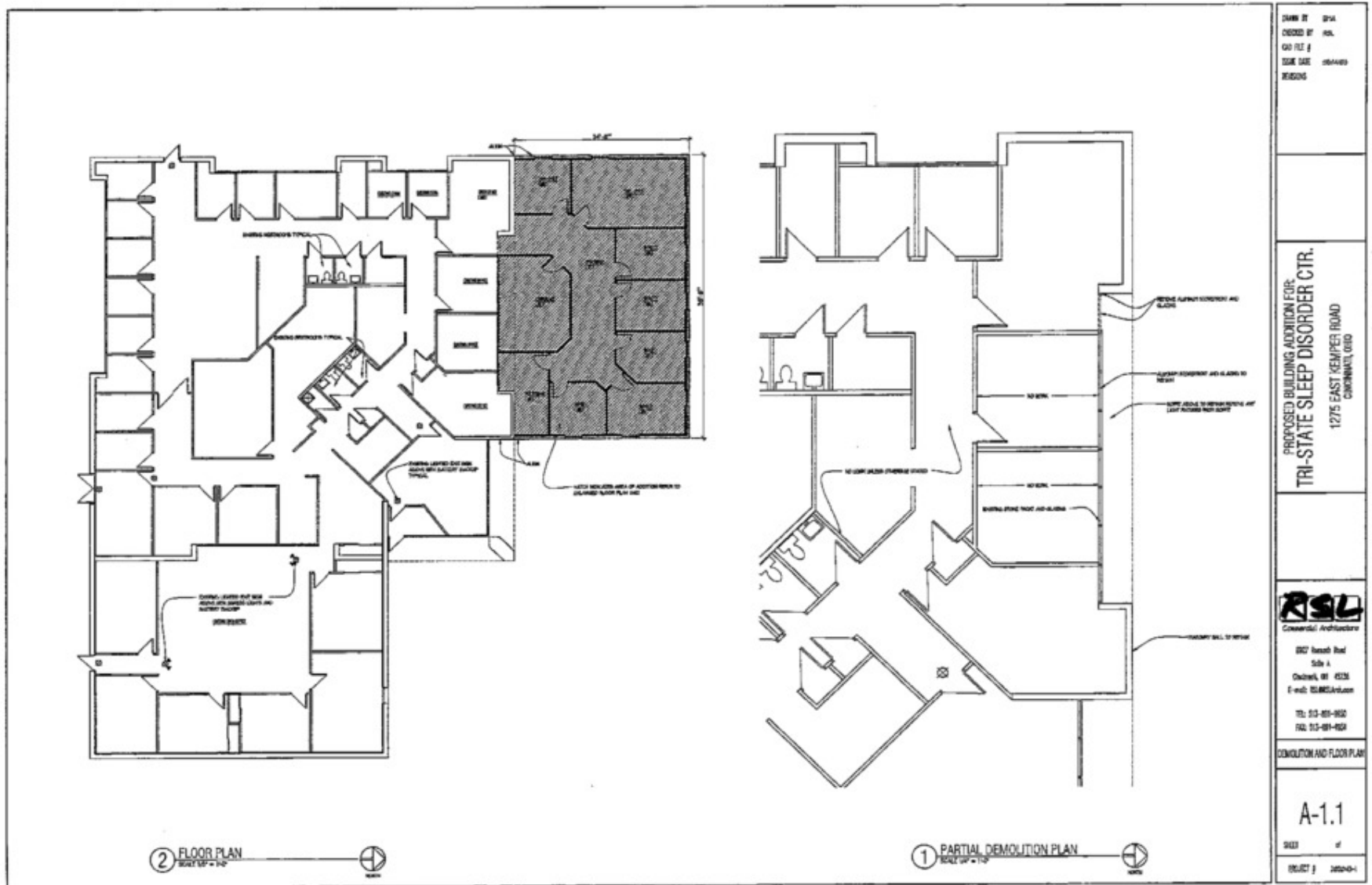


✉ **Billy Gillman**
+1 513 322 6319
billy@bergman-group.com

✉ **Rob Hock**
+1 513 322 6313
rob@bergman-group.com

FOR LEASE

1275 E. Kemper Road Cincinnati, OH 45246



No Warranty Or Representation, Express Or Implied, Is Made As To The Accuracy Of The Information Contained Herein, And The Same Is Submitted Subject To Errors, Omissions, Change Of Price, Rental Or Other Conditions, Prior Sale, Lease Or Financing, Or Withdrawal Without Notice, And Of Any Special Listing Conditions Imposed By Our Principals No Warranties Or Representations Are Made As To The Condition Of The Property Or Any Hazards Contained Therein Are Any To Be Implied.

✉ **Billy Gillman**
+1 513 322 6319
billy@bergman-group.com

✉ **Rob Hock**
+1 513 322 6313
rob@bergman-group.com

NABergman

FOR LEASE

1275 E. Kemper Road Cincinnati, OH 45246



Map data ©2022 Google Imagery ©2022, CNES / Airbus, Landsat / Copernicus, Maxar Technologies, U.S. Geological Survey, USDA/FPAC/GEBCO

No Warranty Or Representation, Express Or Implied, Is Made As To The Accuracy Of The Information Contained Herein, And The Same Is Submitted Subject To Errors, Omissions, Change Of Price, Rental Or Other Conditions, Prior Sale, Lease Or Financing, Or Withdrawal Without Notice, And Of Any Special Listing Conditions Imposed By Our Principals No Warranties Or Representations Are Made As To The Condition Of The Property Or Any Hazards Contained Therein Are Any To Be Implied.

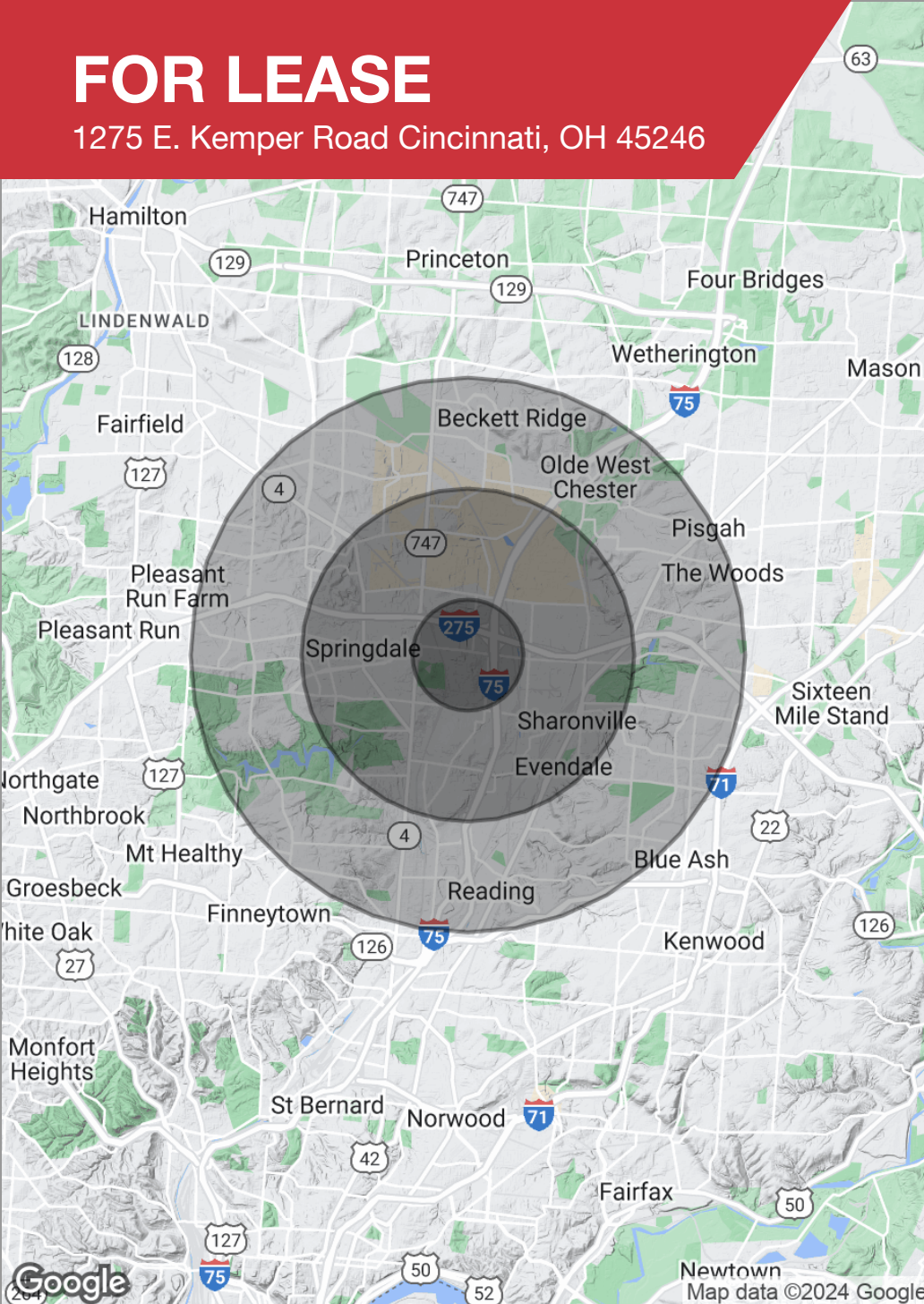
✉ **Billy Gillman**
+1 513 322 6319
billy@bergman-group.com

✉ **Rob Hock**
+1 513 322 6313
rob@bergman-group.com

NABergman

FOR LEASE

1275 E. Kemper Road Cincinnati, OH 45246



POPULATION

	1 MILE	3 MILES	5 MILES
Total population	4,068	33,672	129,379
Median age	34.5	37.3	38.1
Median age (male)	30.2	33.8	36.3
Median age (Female)	39.7	40.1	39.6

HOUSEHOLDS & INCOME

	1 MILE	3 MILES	5 MILES
Total households	1,565	13,512	51,429
# of persons per HH	2.6	2.5	2.5
Average HH income	\$60,381	\$67,266	\$73,646
Average house value	\$213,798	\$199,039	\$181,361

* Demographic data derived from 2020 ACS - US Census

No Warranty Or Representation, Express Or Implied, Is Made As To The Accuracy Of The Information Contained Herein, And The Same Is Submitted Subject To Errors, Omissions, Change Of Price, Rental Or Other Conditions, Prior Sale, Lease Or Financing, Or Withdrawal Without Notice, And Of Any Special Listing Conditions Imposed By Our Principals No Warranties Or Representations Are Made As To The Condition Of The Property Or Any Hazards Contained Therein Are Any To Be Implied.

✉ **Billy Gillman**
+1 513 322 6319
billy@bergman-group.com

✉ **Rob Hock**
+1 513 322 6313
rob@bergman-group.com

NABergman