

36,661 SF FORMER DEALERSHIP



FOR LEASE



35200 Grand River Ave

Farmington Hills, Michigan 48335

Property Highlights

- Former Farmington Hills Toyota Dealerships located on Grand River Ave with 288' of Frontage and on Drake Road in the Densely Populated Traveled Automotive Epicenter of Novi & Farmington Hills.
- Over 20 Nearby Car Dealerships Including: Porsche, Audi, Mazda, BMW, Jaguar, Buick, and Chrysler Dodge Jeep Ram and Many More.
- Great Freeway Access that is Located within 1 Mile of the Entrance Ramp of 696 & I-275.
- Neighboring Cities Within 4 Miles Include Novi, Northville, and Livonia.
- Lease Rate: \$22/PSF NNN

35200 Grand River Ave, Farmington Hills

Former Toyota Dealership - Complete

28,644 SF with 288' of Frontage on Grand River

Situated on 6.760 AC

Zoned: B-3

35200 Grand River Ave, Farmington Hills

Former Garage - Service/Fleet Facilities Repair

7,517 SF

Situated on 6.760 AC

Zoned: B-3

35200 Grand River Ave, Farmington Hills

Former Warehouses – Storage

500 SF

Situated on 6.760 AC

Zoned: B-3



Commercial Real Estate Services, Worldwide.

www.naifarbman.com

Ron Goldstone

Executive Vice President | 248.351.4371
goldstone@farbman.com

Brian Crawford

Vice President | 248.351.4376
crawford@farbman.com

Brandon Ben-Ezra

Leasing and Sales Associate | 947.517.6226
ben-ezra@farbman.com

NO WARRANTY, EXPRESS OR IMPLIED, IS MADE AS TO THE ACCURACY OF THE INFORMATION CONTAINED HEREIN. THIS INFORMATION IS SUBMITTED SUBJECT TO ERRORS, OMISSIONS, CHANGE OF PRICE, RENTAL OR OTHER CONDITIONS, WITHDRAWAL WITHOUT NOTICE, AND IS SUBJECT TO ANY SPECIAL LISTING CONDITIONS IMPOSED BY OUR PRINCIPALS. COOPERATING BROKERS, BUYERS, TENANTS AND OTHER PARTIES WHO RECEIVE THIS DOCUMENT SHOULD NOT RELY ON IT, BUT SHOULD USE IT AS A STARTING POINT OF ANALYSIS, AND SHOULD INDEPENDENTLY CONFIRM THE ACCURACY OF THE INFORMATION CONTAINED HEREIN THROUGH A DUE DILIGENCE REVIEW OF THE BOOKS, RECORDS, FILES AND DOCUMENTS THAT CONSTITUTE RELIABLE SOURCES OF THE INFORMATION DESCRIBED HEREIN. LOGOS ARE FOR IDENTIFICATION PURPOSES ONLY AND MAY BE TRADEMARKS OF THEIR RESPECTIVE COMPANIES. NAI Farbman, INC. CA BRE LIC. #01990696.

36,661 SF FORMER DEALERSHIP



FOR LEASE



36,661 SF
FORMER DEALERSHIP



FOR LEASE



Commercial Real Estate Services, Worldwide.
www.naifarberman.com

Ron Goldstone

Executive Vice President | 248.351.4371
goldstone@farberman.com

Brian Crawford

Vice President | 248.351.4376
crawford@farberman.com

Brandon Ben-Ezra

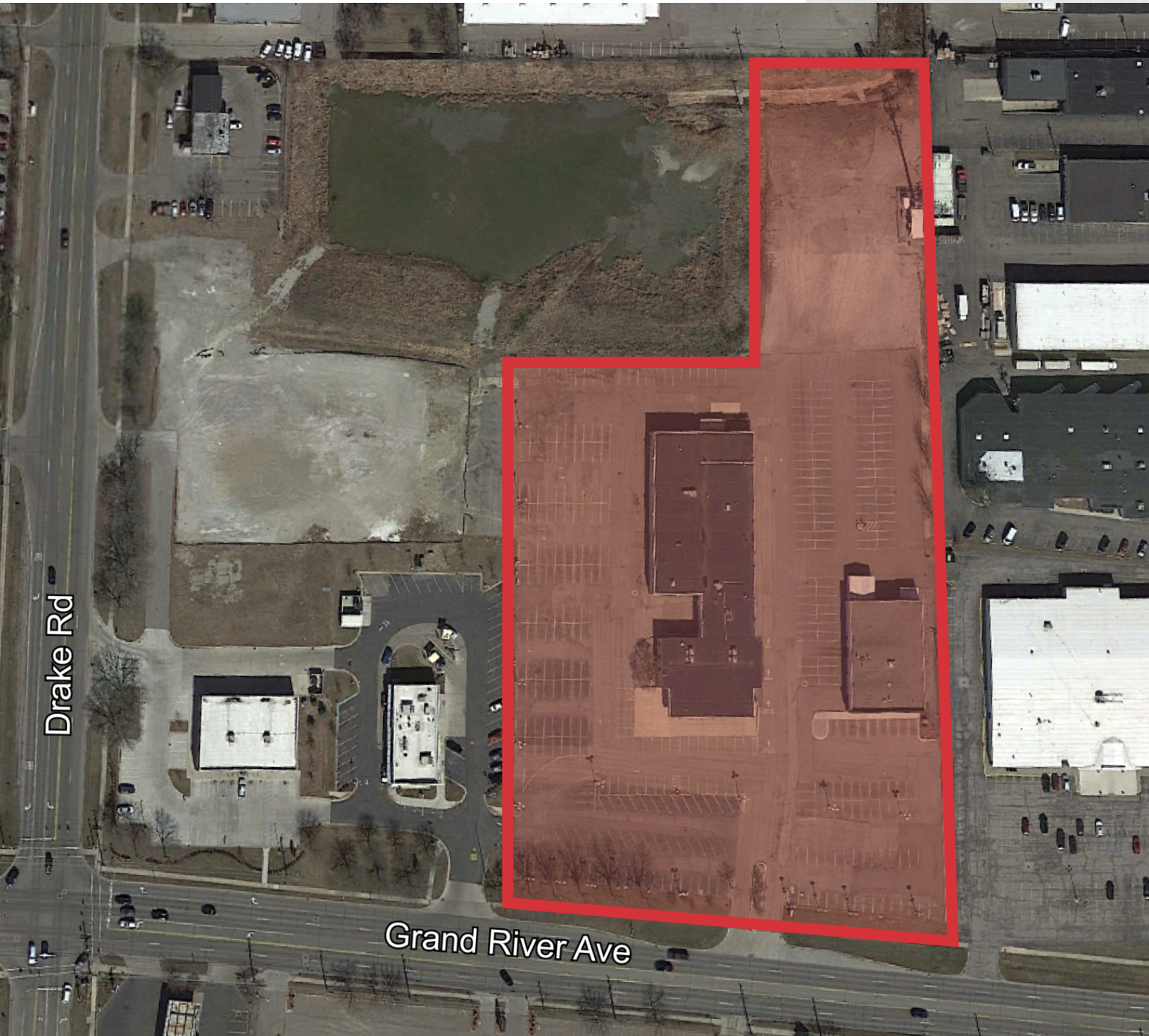
Leasing and Sales Associate | 947.517.6226
ben-ezra@farberman.com

NO WARRANTY, EXPRESS OR IMPLIED, IS MADE AS TO THE ACCURACY OF THE INFORMATION CONTAINED HEREIN. THIS INFORMATION IS SUBMITTED SUBJECT TO ERRORS, OMISSIONS, CHANGE OF PRICE, RENTAL OR OTHER CONDITIONS, WITHDRAWAL WITHOUT NOTICE, AND IS SUBJECT TO ANY SPECIAL LISTING CONDITIONS IMPOSED BY OUR PRINCIPALS. COOPERATING BROKERS, BUYERS, TENANTS AND OTHER PARTIES WHO RECEIVE THIS DOCUMENT SHOULD NOT RELY ON IT, BUT SHOULD USE IT AS A STARTING POINT OF ANALYSIS, AND SHOULD INDEPENDENTLY CONFIRM THE ACCURACY OF THE INFORMATION CONTAINED HEREIN THROUGH A DUE DILIGENCE REVIEW OF THE BOOKS, RECORDS, FILES AND DOCUMENTS THAT CONSTITUTE RELIABLE SOURCES OF THE INFORMATION DESCRIBED HEREIN. LOGOS ARE FOR IDENTIFICATION PURPOSES ONLY AND MAY BE TRADEMARKS OF THEIR RESPECTIVE COMPANIES. NAI Farberman, INC. CA BRE LIC. #01990696.

36,661 SF
FORMER DEALERSHIP



FOR LEASE



NAI Farbman

Commercial Real Estate Services, Worldwide.

www.naifarbman.com

Ron Goldstone

Executive Vice President | 248.351.4371
goldstone@farbman.com

Brian Crawford

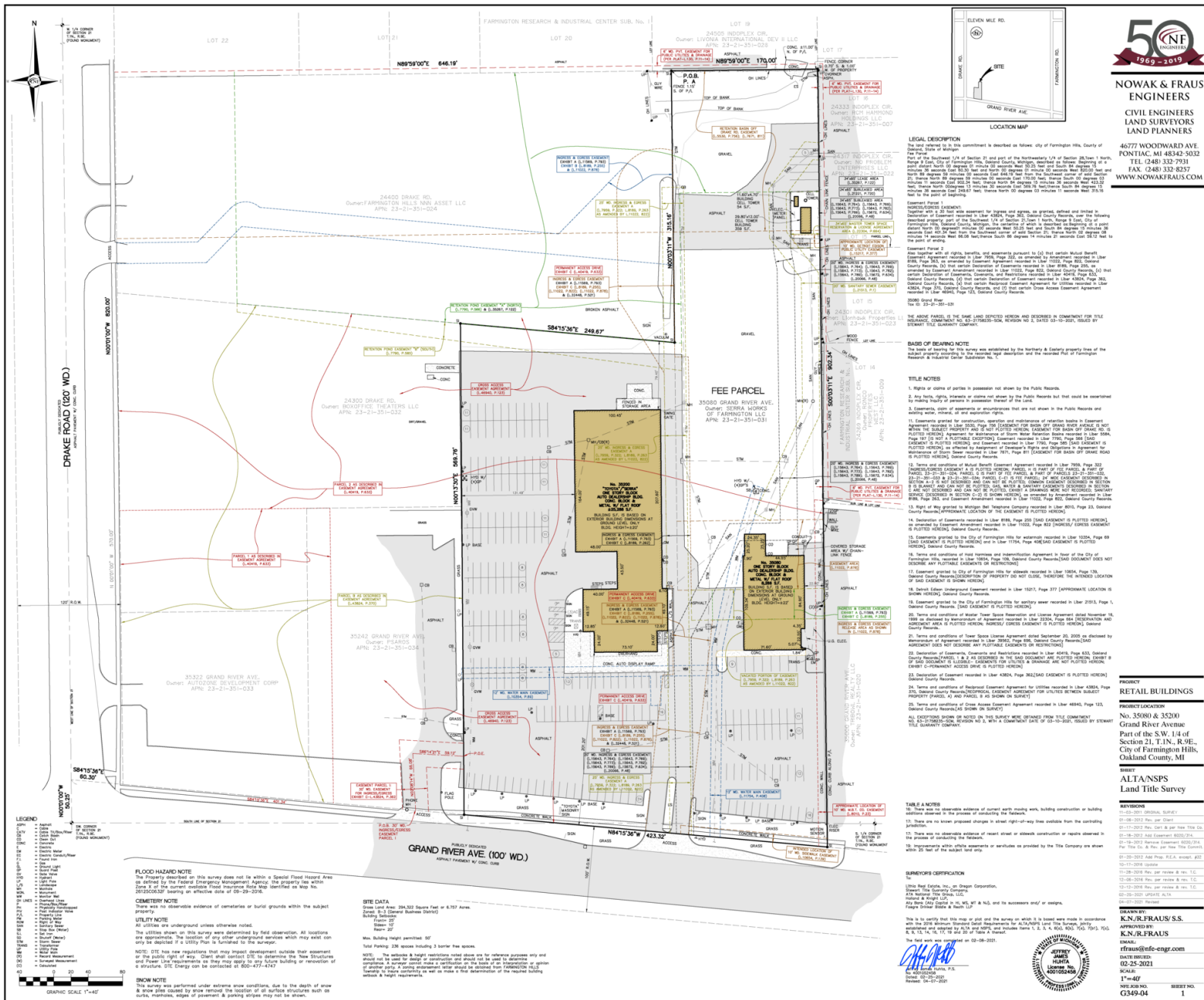
Vice President | 248.351.4376
crawford@farbman.com

Brandon Ben-Ezra

Leasing and Sales Associate | 947.517.6226
ben-ezra@farbman.com

NO WARRANTY, EXPRESS OR IMPLIED, IS MADE AS TO THE ACCURACY OF THE INFORMATION CONTAINED HEREIN. THIS INFORMATION IS SUBMITTED SUBJECT TO ERRORS, OMISSIONS, CHANGE OF PRICE, RENTAL OR OTHER CONDITIONS, WITHDRAWAL WITHOUT NOTICE, AND IS SUBJECT TO ANY SPECIAL LISTING CONDITIONS IMPOSED BY OUR PRINCIPALS. COOPERATING BROKERS, BUYERS, TENANTS AND OTHER PARTIES WHO RECEIVE THIS DOCUMENT SHOULD NOT RELY ON IT, BUT SHOULD USE IT AS A STARTING POINT OF ANALYSIS, AND SHOULD INDEPENDENTLY CONFIRM THE ACCURACY OF THE INFORMATION CONTAINED HEREIN THROUGH A DUE DILIGENCE REVIEW OF THE BOOKS, RECORDS, FILES AND DOCUMENTS THAT CONSTITUTE RELIABLE SOURCES OF THE INFORMATION DESCRIBED HEREIN. LOGOS ARE FOR IDENTIFICATION PURPOSES ONLY AND MAY BE TRADEMARKS OF THEIR RESPECTIVE COMPANIES. NAI Farbman, INC. CA BRE LIC. #01990696.

FOR LEASE



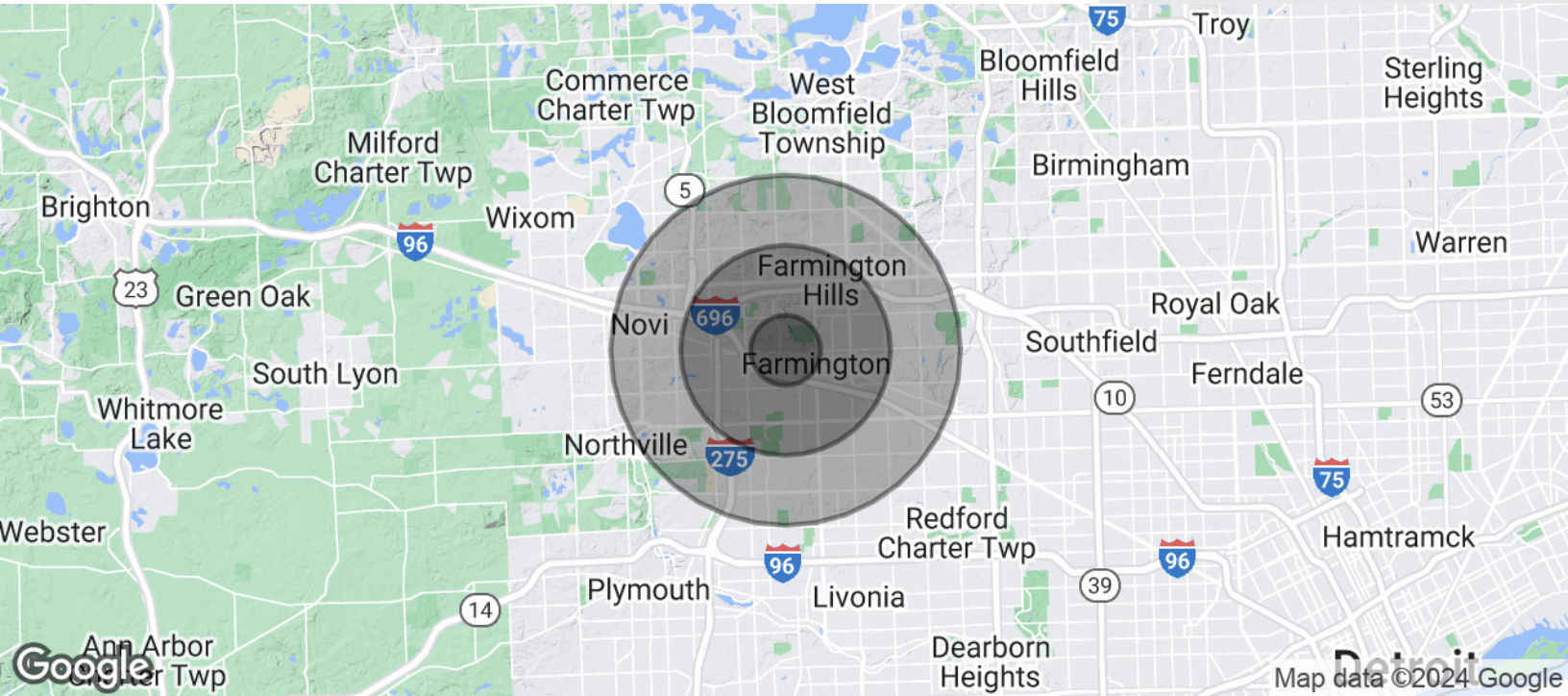
Brandon Ben-Ezra
Leasing and Sales Associate | 947.517.6226
ben-ezra@farbman.com

NO WARRANTY, EXPRESS OR IMPLIED, IS MADE AS TO THE ACCURACY OF THE INFORMATION CONTAINED HEREIN. THIS INFORMATION IS SUBMITTED SUBJECT TO ERRORS, OMISSIONS, CHANGE OF PRICE, RENTAL OR OTHER CONDITIONS, WITHDRAWAL WITHOUT NOTICE, AND IS SUBJECT TO ANY SPECIAL LISTING CONDITIONS IMPOSED BY OUR PRINCIPALS, COOPERATING BROKERS, BUYERS, TENANTS AND OTHER PARTIES WHO RECEIVE THIS DOCUMENT. SHOULD NOT RELY ON IT, BUT SHOULD USE IT AS A STARTING POINT OF ANALYSIS, AND SHOULD INDEPENDENTLY CONFIRM THE ACCURACY OF THE INFORMATION CONTAINED HEREIN THROUGH A DUE DILIGENCE INVESTIGATION. WE DO NOT WARRANT THAT THE INFORMATION CONTAINED HEREIN IS COMPLETE, ACCURATE, CURRENT, OR OTHERWISE RELIABLE. SOURCE OF THE INFORMATION DESCRIBED HEREIN. LOGOS ARE FOR IDENTIFICATION PURPOSES ONLY AND MAY BE TRADEMARKS OF THEIR RESPECTIVE COMPANIES. NO FEE/NO SHOW, CO. BOBBE L.S., #1390896.

36,661 SF FORMER DEALERSHIP



FOR LEASE



POPULATION

	1 MILE	3 MILES	5 MILES
Total Population	13,994	131,461	292,955
Average Age	38.7	38.4	38.7
Average Age (Male)	37.6	36.6	37.1
Average Age (Female)	40.0	40.5	40.1

HOUSEHOLDS & INCOME

	1 MILE	3 MILES	5 MILES
Total Households	5,297	51,687	114,724
# of Persons per HH	2.6	2.5	2.6
Average HH Income	\$63,328	\$56,579	\$57,453
Average House Value	\$138,143	\$138,417	\$151,549

* Demographic data derived from 2020 ACS - US Census



Commercial Real Estate Services, Worldwide.

www.naifarberman.com

Ron Goldstone

Executive Vice President | 248.351.4371
goldstone@farberman.com

Brian Crawford

Vice President | 248.351.4376
crawford@farberman.com

Brandon Ben-Ezra

Leasing and Sales Associate | 947.517.6226
ben-ezra@farberman.com

NO WARRANTY, EXPRESS OR IMPLIED, IS MADE AS TO THE ACCURACY OF THE INFORMATION CONTAINED HEREIN. THIS INFORMATION IS SUBMITTED SUBJECT TO ERRORS, OMISSIONS, CHANGE OF PRICE, RENTAL OR OTHER CONDITIONS, WITHDRAWAL WITHOUT NOTICE, AND IS SUBJECT TO ANY SPECIAL LISTING CONDITIONS IMPOSED BY OUR PRINCIPALS. COOPERATING BROKERS, BUYERS, TENANTS AND OTHER PARTIES WHO RECEIVE THIS DOCUMENT SHOULD NOT RELY ON IT, BUT SHOULD USE IT AS A STARTING POINT OF ANALYSIS, AND SHOULD INDEPENDENTLY CONFIRM THE ACCURACY OF THE INFORMATION CONTAINED HEREIN THROUGH A DUE DILIGENCE REVIEW OF THE BOOKS, RECORDS, FILES AND DOCUMENTS THAT CONSTITUTE RELIABLE SOURCES OF THE INFORMATION DESCRIBED HEREIN. LOGOS ARE FOR IDENTIFICATION PURPOSES ONLY AND MAY BE TRADEMARKS OF THEIR RESPECTIVE COMPANIES. NAI Farberman, INC. CA BRE LIC. #01990696.