



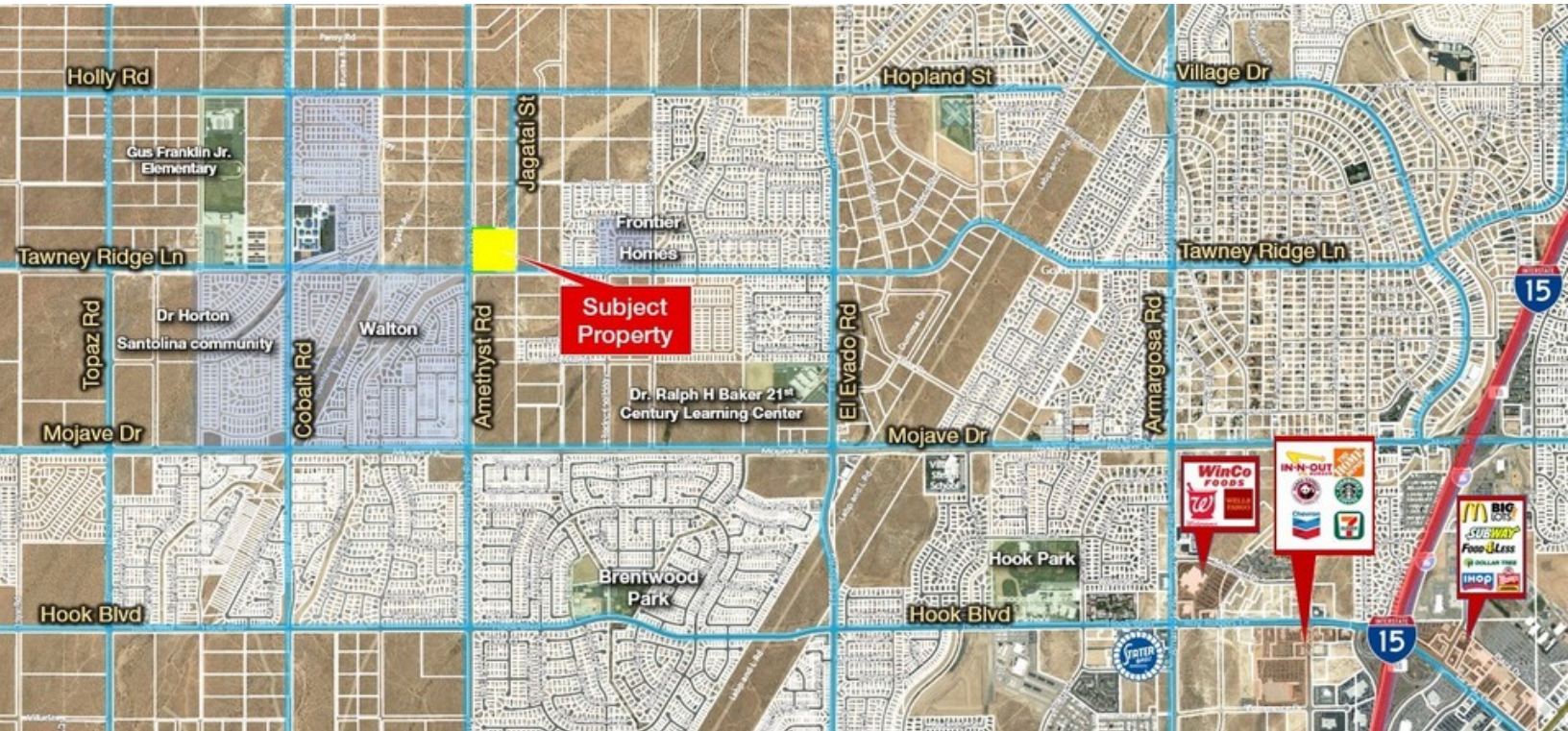
**FOR SALE**



**LAND**



**±9.84 ACRES**



# Tawney Ridge Ln

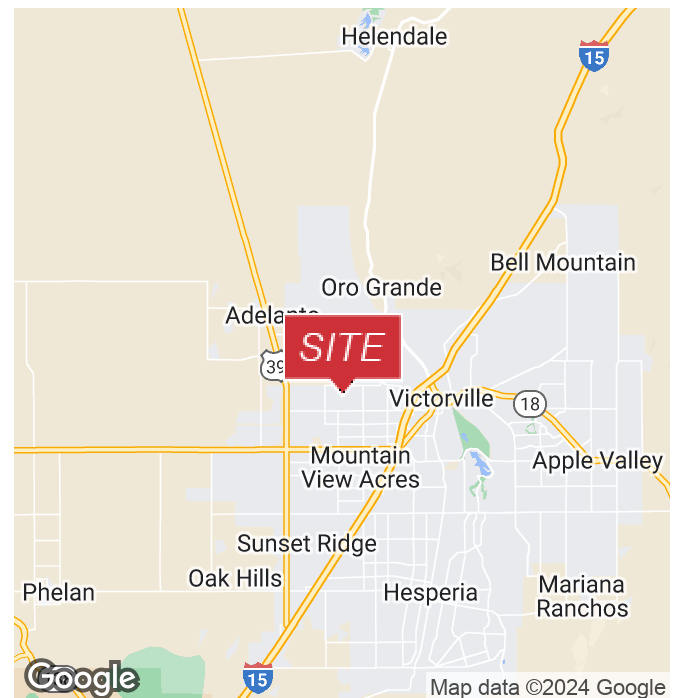
Victorville, California 92392

## Property Highlights

- ASKING: \$299,000
- SIZE: ± 9.84
- APN: 0394-021-04,05
- ZONING: R-1TB4

## Property Description

- Single family residential land
- Utilities at site
- Surrounded by existing communities
- Central location



**Mehdi Mostaedi, ALC**  
Executive Managing Director | 760.780.4210  
mmostaedi@naicapital.com | CalDRE #01392527

**Jonathan Pollak**  
Senior Associate | 760.780.4217  
jpollak@naicapital.com | CalDRE #02106603



www.naicapital.com

NO WARRANTY, EXPRESS OR IMPLIED, IS MADE AS TO THE ACCURACY OF THE INFORMATION CONTAINED HEREIN. THIS INFORMATION IS SUBMITTED SUBJECT TO ERRORS, OMISSIONS, CHANGE OF PRICE, RENTAL OR OTHER CONDITIONS. WITHDRAWAL WITHOUT NOTICE, AND IS SUBJECT TO ANY SPECIAL LISTING CONDITIONS IMPOSED BY OUR PRINCIPALS. COOPERATING BROKERS, BUYERS, TENANTS AND OTHER PARTIES WHO RECEIVE THIS DOCUMENT SHOULD NOT RELY ON IT, BUT SHOULD USE IT AS A STARTING POINT OF ANALYSIS, AND SHOULD INDEPENDENTLY CONFIRM THE ACCURACY OF THE INFORMATION CONTAINED HEREIN THROUGH A DUE DILIGENCE REVIEW OF THE BOOKS, RECORDS, FILES AND DOCUMENTS THAT CONSTITUTE RELIABLE SOURCES OF THE INFORMATION DESCRIBED HEREIN. LOGOS ARE FOR IDENTIFICATION PURPOSES ONLY AND MAY BE TRADEMARKS OF THEIR RESPECTIVE COMPANIES. NAI CAPITAL COMMERCIAL, INC. CAL DRE LIC. #02130474





**FOR SALE**



**LAND**



**±9.84 ACRES**



[www.naicapital.com](http://www.naicapital.com)

**Mehdi Mostaedi, ALC**  
Executive Managing Director | 760.780.4210  
[mmostaedi@naicapital.com](mailto:mmostaedi@naicapital.com) | CalDRE #01392527

**Jonathan Pollak**  
Senior Associate | 760.780.4217  
[jpollak@naicapital.com](mailto:jpollak@naicapital.com) | CalDRE #02106603

NO WARRANTY, EXPRESS OR IMPLIED, IS MADE AS TO THE ACCURACY OF THE INFORMATION CONTAINED HEREIN. THIS INFORMATION IS SUBMITTED SUBJECT TO ERRORS, OMISSIONS, CHANGE OF PRICE, RENTAL OR OTHER CONDITIONS, WITHDRAWAL WITHOUT NOTICE, AND IS SUBJECT TO ANY SPECIAL LISTING CONDITIONS IMPOSED BY OUR PRINCIPALS. COOPERATING BROKERS, BUYERS, TENANTS AND OTHER PARTIES WHO RECEIVE THIS DOCUMENT SHOULD NOT RELY ON IT, BUT SHOULD USE IT AS A STARTING POINT OF ANALYSIS, AND SHOULD INDEPENDENTLY CONFIRM THE ACCURACY OF THE INFORMATION CONTAINED HEREIN THROUGH A DUE DILIGENCE REVIEW OF THE BOOKS, RECORDS, FILES AND DOCUMENTS THAT CONSTITUTE RELIABLE SOURCES OF THE INFORMATION DESCRIBED HEREIN. LOGOS ARE FOR IDENTIFICATION PURPOSES ONLY AND MAY BE TRADEMARKS OF THEIR RESPECTIVE COMPANIES. NAI CAPITAL COMMERCIAL, INC. CAL DRE LIC. #02130474