



# FOR LEASE

■ 4217- 4219 SW High Meadow Ave

Palm City, FL 34990

## PROPERTY OVERVIEW

2,238 sf professional office with nice open reception area, conference, break room, 5 offices and two restrooms.

## LOCATION OVERVIEW

Palm City Business Park is conveniently located on High Meadows Ave off of Martin Hwy. Visible from Florida's Turnpike and easy access to the Turnpike and I-95.

## OFFERING SUMMARY

Unit Size: 2,238 sf  
Zoning: LI (Limited Industrial District) - Martin County

[CLICK HERE FOR PERMITTED USES](#)

LEASE RATE

\$19.50/SF MG



**JAIME CHAMBERLIN**  
VICE PRESIDENT, BROKER  
Mobile 772.486.3330  
[jaime@slccommercial.com](mailto:jaime@slccommercial.com)



**JEFFREY D. CHAMBERLIN**  
PRESIDENT/BROKER, CCIM,  
SIOR  
Mobile 772.528.6056  
[chamberlin@slccommercial.com](mailto:chamberlin@slccommercial.com)

772.220.4096 | [slccommercial.com](http://slccommercial.com)



**SLC Commercial**  
Realty & Development



The information contained herein has been obtained from sources believed to be reliable, but no warranty or representation, expressed or implied, is made. All sizes and dimensions are approximate. Any prospective buyer should exercise prudence and verify independently all significant data and property information. This is NOT an offer of sub-agency or co-brokerage.



# Additional Photos

PALM CITY BUSINESS PARK

FOR LEASE

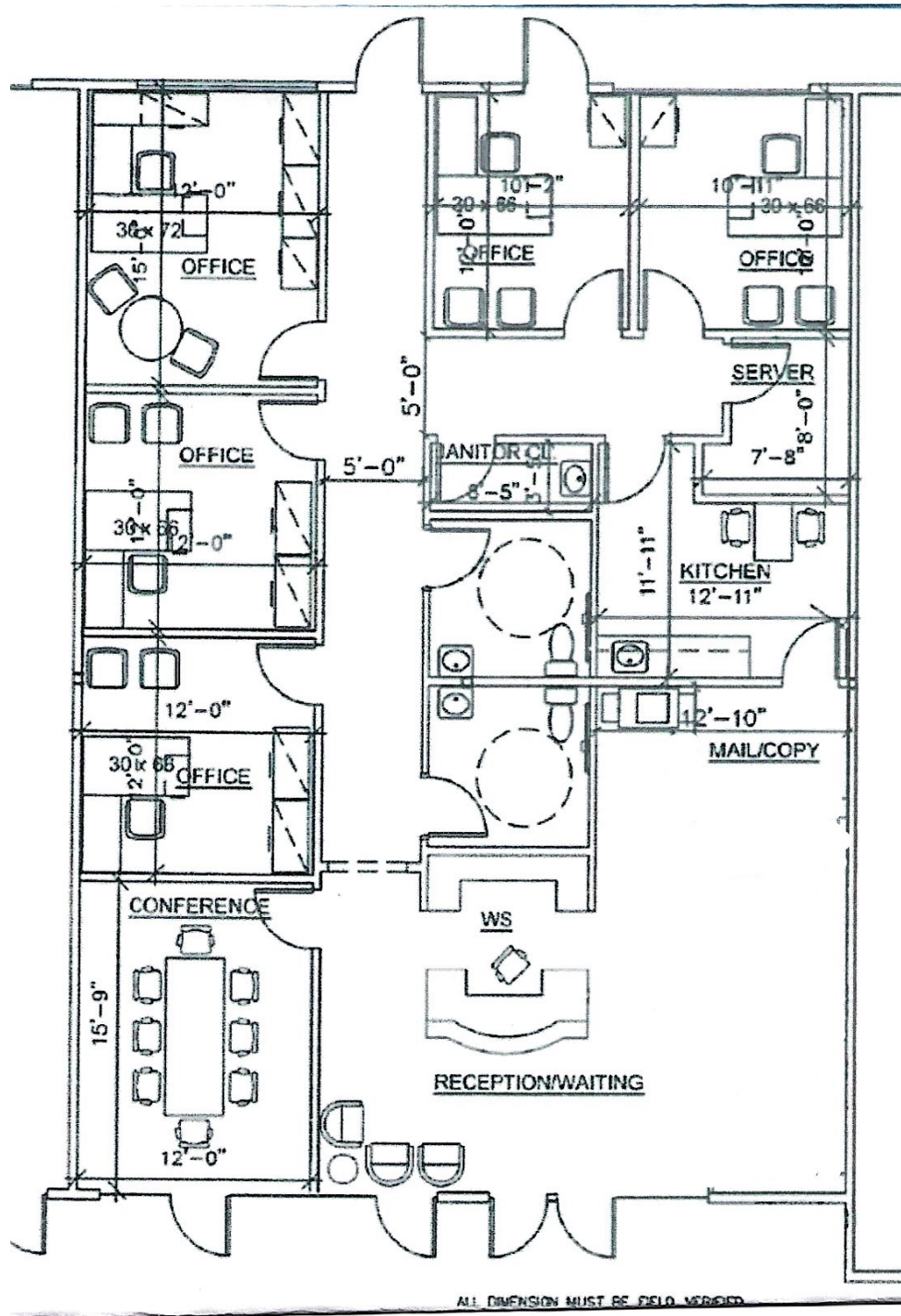




# Floor Plans

PALM CITY BUSINESS PARK

FOR LEASE



# Palm City Business Park

PALM CITY BUSINESS PARK

**FOR LEASE**

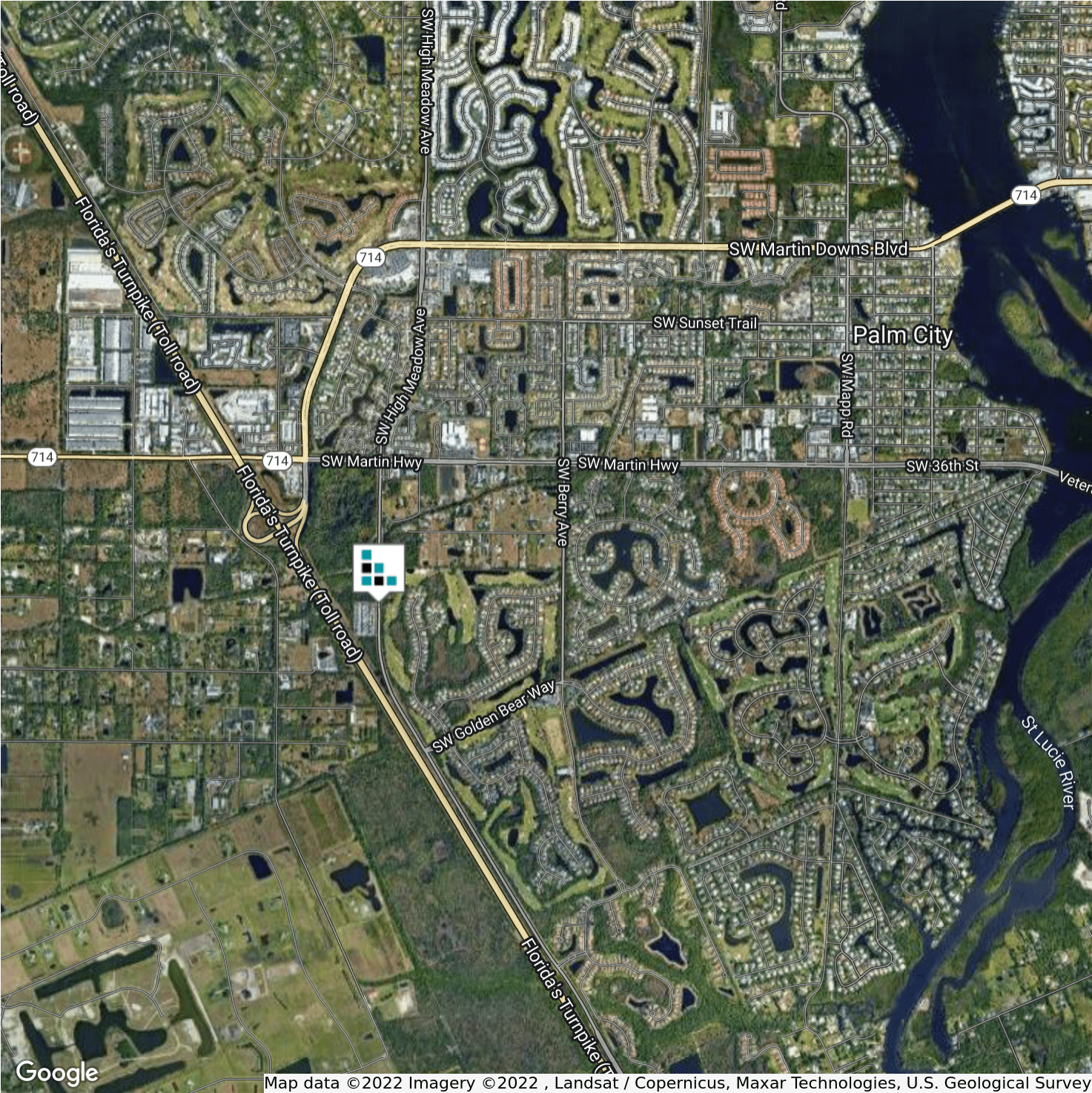




# Location Map

PALM CITY BUSINESS PARK

FOR LEASE



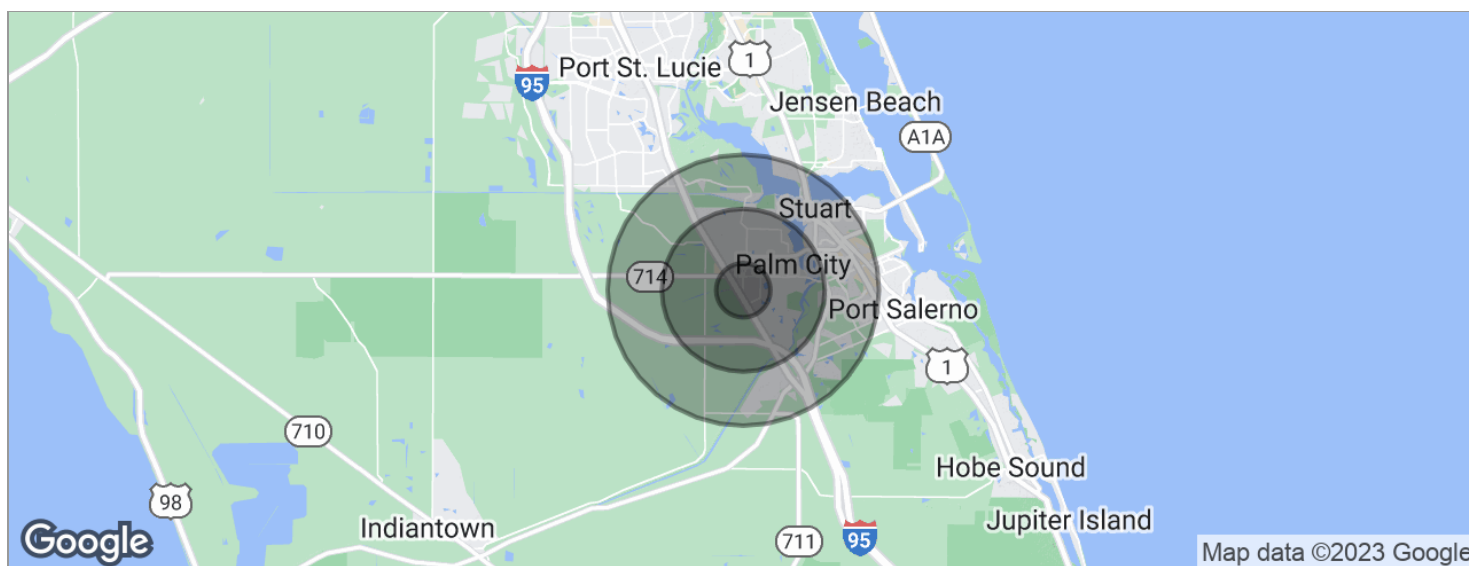
The information contained herein has been obtained from sources believed to be reliable, but no warranty or representation, expressed or implied, is made. All sizes and dimensions are approximate. Any prospective buyer should exercise prudence and verify independently all significant data and property information. This is NOT an offer of sub-agency or co-brokerage.



# Demographics Map

PALM CITY BUSINESS PARK

FOR LEASE



POPULATION	1 MILE	3 MILES	5 MILES
Total population	2,878	22,402	56,271
Median age	43.8	48.1	47.0
Median age (Male)	43.4	47.1	45.6
Median age (Female)	44.2	48.8	47.7
HOUSEHOLDS & INCOME	1 MILE	3 MILES	5 MILES
Total households	1,027	8,904	23,109
# of persons per HH	2.8	2.5	2.4
Average HH income	\$104,817	\$94,925	\$82,963
Average house value		\$490,086	\$338,124

\* Demographic data derived from 2020 ACS - US Census



# Disclaimer

## PALM CITY BUSINESS PARK

FOR LEASE

This presentation package has been prepared by the company representing the property for informational purposes only and does not purport to contain all information necessary to reach a purchase decision.

The information herein has been given by the Owner or other sources believed to be reliable, but it has not necessarily been independently verified by the Company representing the property and neither its accuracy nor its completeness is guaranteed.

This information is subject to errors, omissions, changes, prior sale or withdrawal without notice by the Company representing the property and does not constitute a recommendation, endorsement or advice as to the value for the purchase of any property. Each prospective lessee or purchaser is to rely upon his/her own investigation, evaluation and judgment as to the advisability of leasing or purchasing the property.

Furthermore, any financial information and calculations presented in this analysis are believed to be accurate, but are not guaranteed and are intended for the purposes of projection and analysis only. The user of this financial information contained herein should consult a tax specialist concerning his/her particular circumstances before making any investment.

