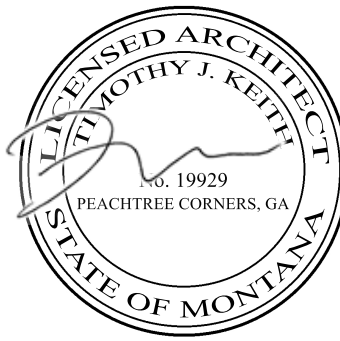
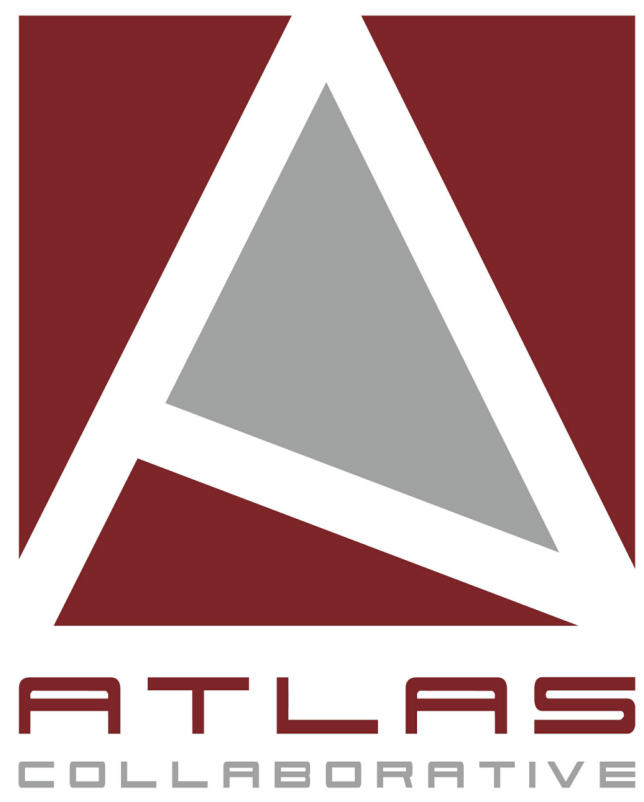


1 SITE PLAN  
SCALE: 1" = 40'-0"



SOUTH FRONTAGE  
DISTRIBUTION CENTER

BUILDING 200

BILLINGS, MONTANA

©2020, Atlas Collaborative LLC. These drawings are protected by the copyright laws of the United States. These drawings or any part thereof may not be used for any purpose or reproduced in any form or by any means without the written consent of Atlas Collaborative, LLC.

Print Record	
28 February 2022	ISSUED FOR PERMIT

Revisions

Issue Date	Job No.
03/28/2022	2201005

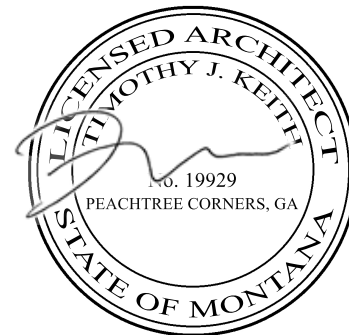
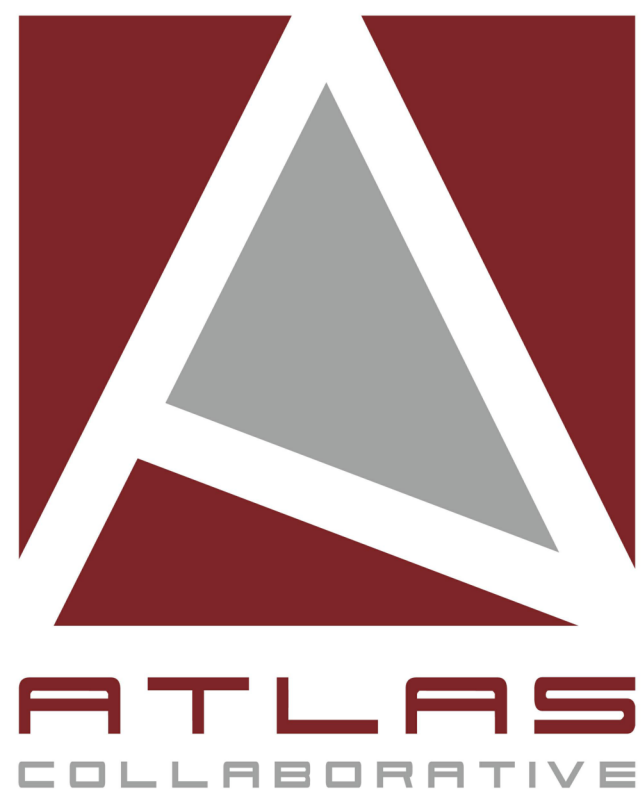
Sheet Title

ARCHITECTURAL SITE  
PLAN

Sheet No.

A.013

ISSUED FOR CONSTRUCTION



SOUTH FRONTAGE  
DISTRIBUTION CENTER

BUILDING 200

BILLINGS, MONTANA

©2020, Atlas Collaborative LLC. These drawings are protected by the copyright laws of the United States. These drawings or any part thereof may not be used for any purpose or reproduced in any form or by any means without the written consent of Atlas Collaborative, LLC.

Print Record

28 February 2022

ISSUED FOR PERMIT

Revisions

Issue Date

03/28/2022

Job No.

2201005

Sheet Title

OVERALL FLOOR PLAN

Sheet No.

A.101

ISSUED FOR CONSTRUCTION



KEYNOTES

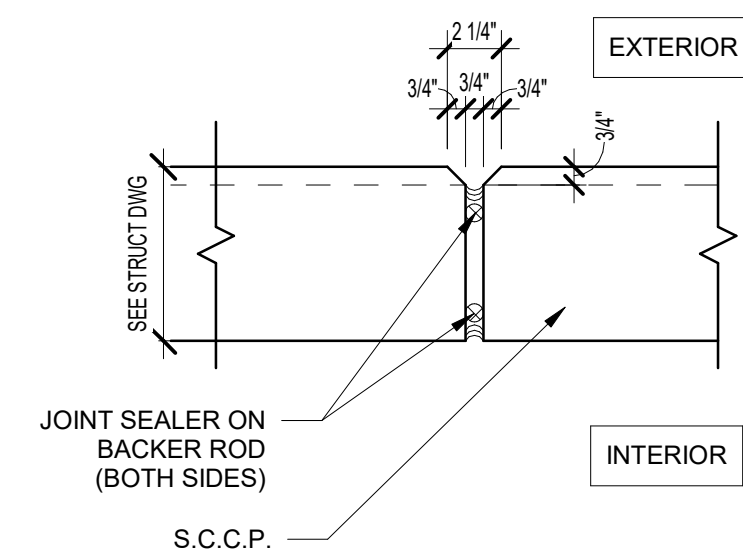
- 1 ACCESS LADDER TO CONCRETE ROOF OF ELECTRICAL ROOM - SEE ENLARGED PLANS.
- 2 3'-0" X 3'-0" ROOF HATCH WITH ACCESS LADDER FROM CONCRETE ROOF AT ELECTRICAL ROOF BELOW. G.C. TO COORDINATE WITH STRUCTURE. PAINTED SAFETY YELLOW - SEE ENLARGED PLANS AND ROOF PLAN.
- 3 FUTURE TENANT OFFICES
- 4 ELECTRICAL ROOM - 1 HOUR RATED
- 5 FIRE PUMP ROOM - 1 HOUR RATED
- 6 RAMP GUARDRAIL - SEE DETAILS 4, 12 & 13 ON A.401
- 7 5' X 5' CONCRETE PAD, SLOPE AWAY FROM BUILDING AT 1/4" PER FT. MAX.
- 8 9' X 9' 24 GAUGE METAL DOWNSPOUTS WITH KYNAR FINISH
- 10 9' X 10' DOCK DOOR
- 11 12' X 14' DRIVE-IN RAMP DOOR

GENERAL NOTES

1. BUILDING TO BE 32' CLEAR JUST PAST THE FIRST COLUMN LINE IN FROM THE DOCK WALL.
2. SLAB CONTROL JOINTS TO BE SAWCUT AND NOT TO EXCEED 15' - 0" ON CENTER. SEE STRUCTURAL DRAWINGS FOR FLOOR SLAB CONTROL JOINTS.
3. SLAB CONSTRUCTION JOINTS TO HAVE SMOOTH DOWELS AT 24" O.C. OR STEEL DIAMOND PLATES - SEE STRUCTURAL DRAWINGS.
4. SLAB WILL BE CURED WITH A WATER-BASED DISPENSITIVE CURING COMPOUND AND WILL RECEIVE ONE COAT SONNEBORNE LAPIDOLITH FLOOR HARDENER.
5. SLAB ON GRADE WILL BE PRE-TREATED WITH TERMITICIDE.
6. 10-MIL VAPOR BARRIER TO BE PROVIDED BELOW THE SLAB ON GRADE THROUGHOUT. ALL SEAMS AND PENETRATIONS TO BE SEALED AND TAPED.
7. 6" THICK REINFORCED, 4,000 PSI CONCRETE SLAB BEARING ON 6" GAB. SLAB TO RECEIVE HARD TROWEL FINISH AND LASER SCREED SHALL BE UTILIZED TO ATTAIN MINIMUM LOCAL & OVERALL SLAB TOLERANCE OF 1/4" 40PL 30.
8. PROVIDE A ESFR SPRINKLER SYSTEM THROUGHOUT.
9. PROVIDE PORTABLE FIRE EXTINGUISHERS OF THE QUANTITY AND AT THE LOCATIONS AS INDICATED OR AS REQUIRED BY THE AUTHORITY HAVING JURISDICTION. EXTINGUISHERS SHALL BE EQUAL TO J.L. INDUSTRIES COSMIC 10E, 10 POUND, 4A-KBGC. TO BE COORDINATED WITH OWNERS LAYOUT.
10. METAL ROOF DECK SHALL BE 1-1/2" TYPE "B" WIDE RIB DECKING SHOP PRIMED WHITE - SEE STRUCTURAL DRAWINGS.
11. RACKING, FLOOR STORAGE AND EQUIPMENT BY OTHERS.
12. SEE ELEVATIONS FOR GLASS SCHEDULE.
13. ALL BOLLARDS TO BE PAINTED SAFETY YELLOW. (PROVIDE BOLLARDS AT ALL DRIVE-IN OVERHEAD DOOR JAMBS, FIRE PROTECTION RISERS, ELECTRICAL TRANSFORMERS AND EXPOSED ELECTRICAL PANELS).
14. ALL BOLLARDS SHALL BE 6" O.D. SCHEDULE 80 STEEL PIPE SET MINIMUM 2'-0" DEEP IN 2'-0" DIAMETER CONCRETE FOOTING WITH PIPE EXTENDED 4'-0" ABOVE PAVING OR FLOOR. FILL PIPE WITH CONCRETE AND DOME TOP - FOOTING TO BE IN SONOTUBE.
15. ROOF ASSEMBLY: SINGLE PLY 45 MIL WHITE TPO MEMBRANE SYSTEM MECHANICALLY FASTENED OVER R-35 ROOF INSULATION OVER ENTIRE ROOF. OVER 1-1/2" METAL DECK. ROOF DECK WILL BE SHOP PRIMED WHITE, INCLUDING THE EDGES. 20-YEAR NOL WARRANTY.
16. ALL STAIRS AND RAILINGS TO BE GALVANIZED. ALL MISC. STEEL TO BE 10-GALVANIZED FOR EXTERIOR APPLICATIONS.
17. ALL SITE CAST CONCRETE PANEL WIDTHS ARE TO CENTERLINE OF CONCRETE PANEL VERTICAL JOINT U.N.O.
18. ALL TILT WALL PANELS SHALL BE CAULKED TO FULL HEIGHT, BOTH SIDES, WITH MASTERSEAL NP-2 POLYURETHANE SEALANT OR EQUAL WITH BACKER ROD BEHIND THE CAULK.
19. (EXTERIOR) ALL S.C.C.P. SHALL RECEIVE A TEXTURED ACRYLIC COATING SIMILAR TO SHERWIN WILLIAMS ULTRACRETE (MEDIUM TEXTURE) WITH ACCENT STRIPING. SEE ELEVATIONS.
20. (INTERIOR) WHERE NO INSULATION S.C.C.P. PANELS WILL BE HARD TROWEL FINISHED WITH CAPPED PICK AND BRACE POINTS AND SHALL RECEIVE ONE COAT OF WHITE LATEX PAINT.
21. PERSONNEL DOORS AND MISC. METALS SHALL RECEIVE ONE (1) PRIMER COAT AND ONE (1) FINISH COAT OF ENAMEL. PROVIDE FIRE DEPARTMENT ACCESS SIGNAGE PER DETAIL 9/A.002 AT EACH PERSONNEL DOOR.
22. INTERIOR COLUMNS TO BE PAINTED SAFETY YELLOW TO 12' A.F.F. REMINDER TO BE PAINTED WHITE.
23. STEEL GUARDS TO BE PROVIDED AT ALL OVERHEAD DOORS.
24. INTERIOR WALLS TO RECEIVE R-19 RIGID INSULATION - ENTIRE WALLS ALL WALLS OTHER THAN DOCK WALL WHERE INSULATION WILL BE FROM 100" A.F.F. TO DECK

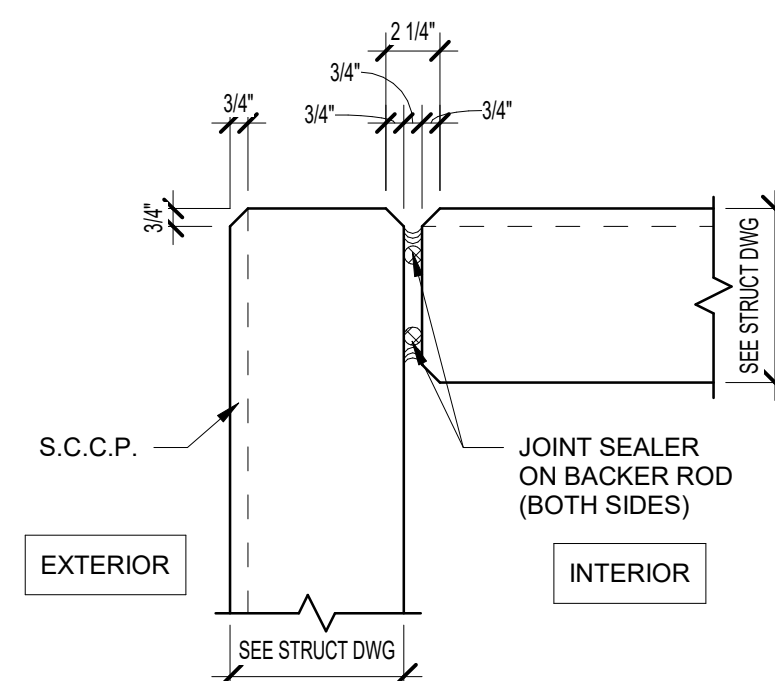
3 TYPICAL S.C.C.P. JOINT DETAIL

SCALE: 1 1/2" = 1'-0"



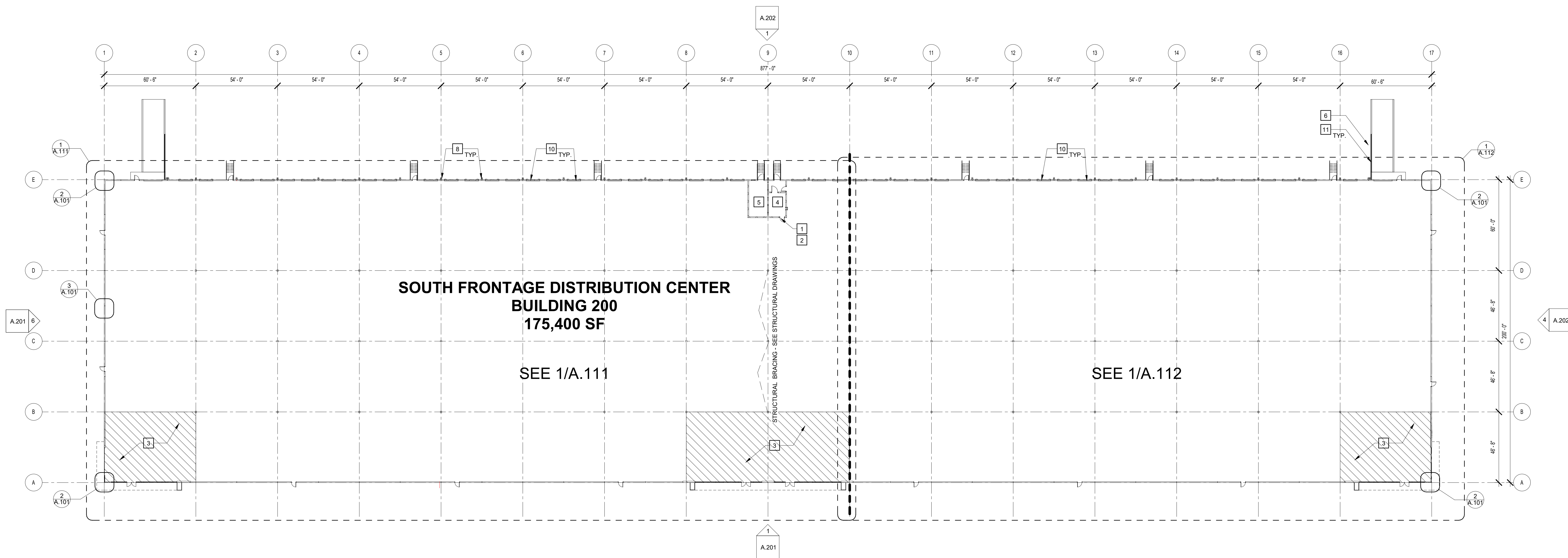
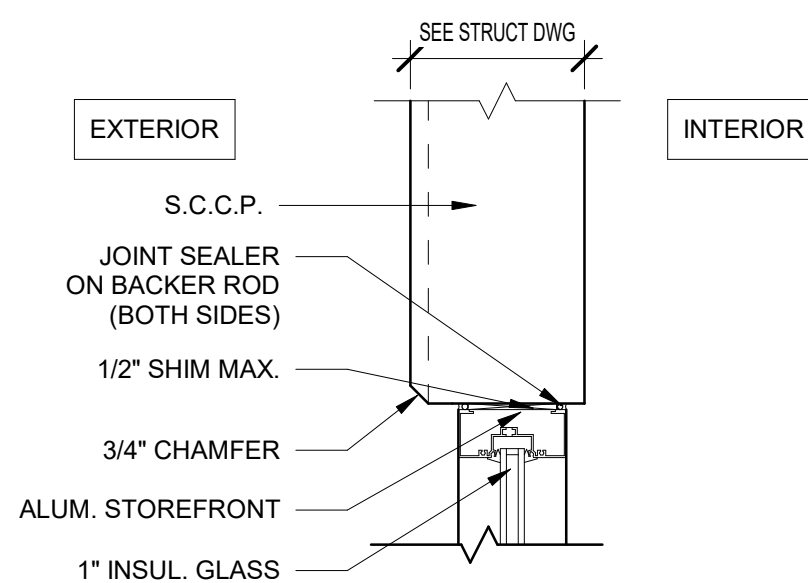
2 TYP. S.C.C.P. CORNER DETAIL

SCALE: 1 1/2" = 1'-0"



4 TYPICAL S.C.C.P./ SF DETAIL

SCALE: 1 1/2" = 1'-0"



1 OVERALL FLOOR PLAN

SCALE: 1" = 30'-0"





## GLASS SCHEDULE

<b>A</b> 1" INSULATED INNER PANE 1/4" OUTER PANE 1/4" INNER PANE HEAT STRENGTHENED OUTER PANE HEAT STRENGTHENED FABRICATOR: TBD STYLE: TBD COLOR: SOLARGREY WITH SOLARBAN 60 OR EQUAL  COATINGS: LowE ON #2 SURFACE U-VALUE: .30 SHGC: .25	<b>B</b> 1" INSULATED INNER PANE 1/4" OUTER PANE 1/4" INNER PANE TEMPERED OUTER PANE TEMPERED FABRICATOR: TBD STYLE: TBD COLOR: SOLARGREY WITH SOLARBAN 60 OR EQUAL  COATINGS: LowE ON #2 SURFACE U-VALUE: .30 SHGC: .25	<b>C</b> 1" INSULATED INNER PANE 1/4" OUTER PANE 1/4" INNER PANE TEMPERED OUTER PANE TEMPERED FABRICATOR: TBD STYLE: SUNGUARD SN 68 WITH DECO HT COLOR: GRAY-CLEAR COATINGS: Low-E ON #2 SURFACE WITH #4 SURFACE BLACK SPANDREL U-VALUE: - SHGC: -	<b>D</b> 1" INSULATED INNER PANE 1/4" OUTER PANE 1/4" INNER PANE HEAT STRENGTHENED OUTER PANE HEAT STRENGTHENED FABRICATOR: TBD STYLE: SUNGUARD SN 68 COLOR: GRAY-CLEAR  COATINGS: LowE ON #2 SURFACE U-VALUE: .29 SHGC: .25
---	---	--	---

NOTE: PROJECTS LOCATED WITHIN A MILE OF THE COASTAL MEAN HIGH WATER LINE AND HAVE DESIGN WIND SPEEDS OVER 130 MPH ARE TO BE CONSIDERED WIND-BORNE DEBRIS REGIONS. G.C. TO CONFIRM.  
NOTE: GLASS "A" SHALL ONLY BE USED AT AREAS NOT REQUIRED TO MEET 2018 IBC SECTION 2406. GLASS "B" SHALL BE USED AT AREAS AS PRESCRIBED IN 2018 IBC SECTION 2406, AS WELL AS HIGH ELEVATION AREAS TO PREEMPT THE HAZARDOUS POSSIBILITY OF BROKEN GLAZING FALLING UPON OCCUPANTS.

## EXTERIOR FINISH SCHEDULE

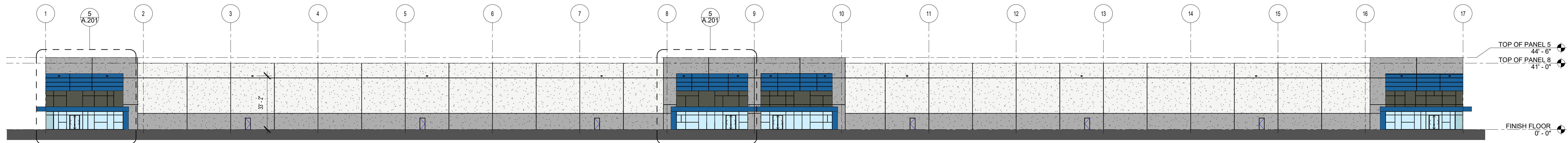
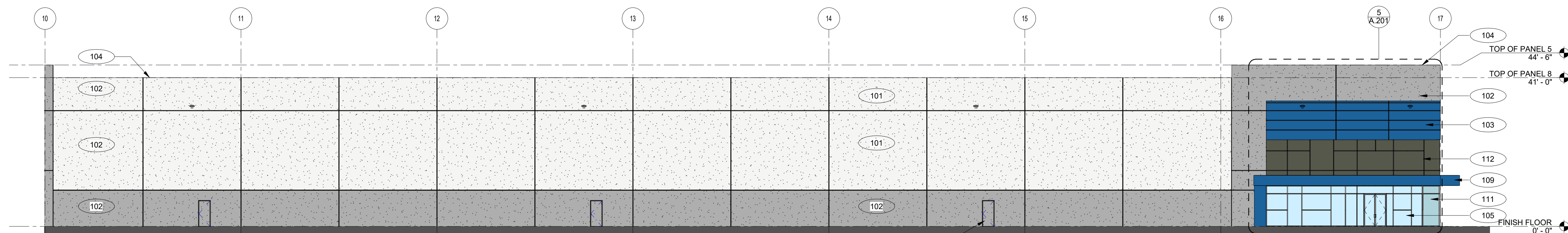
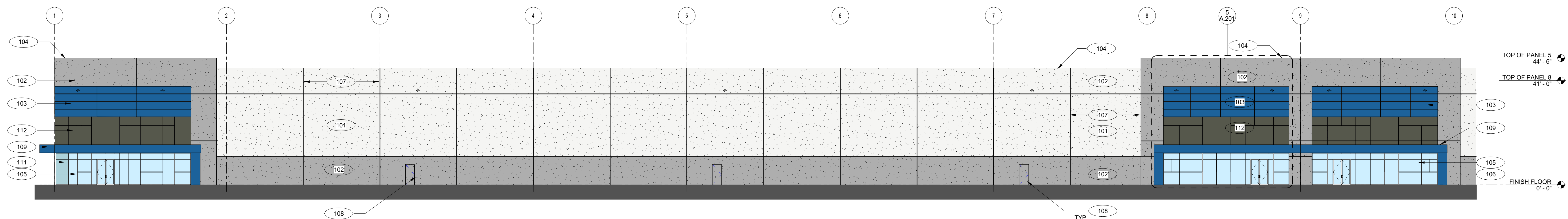
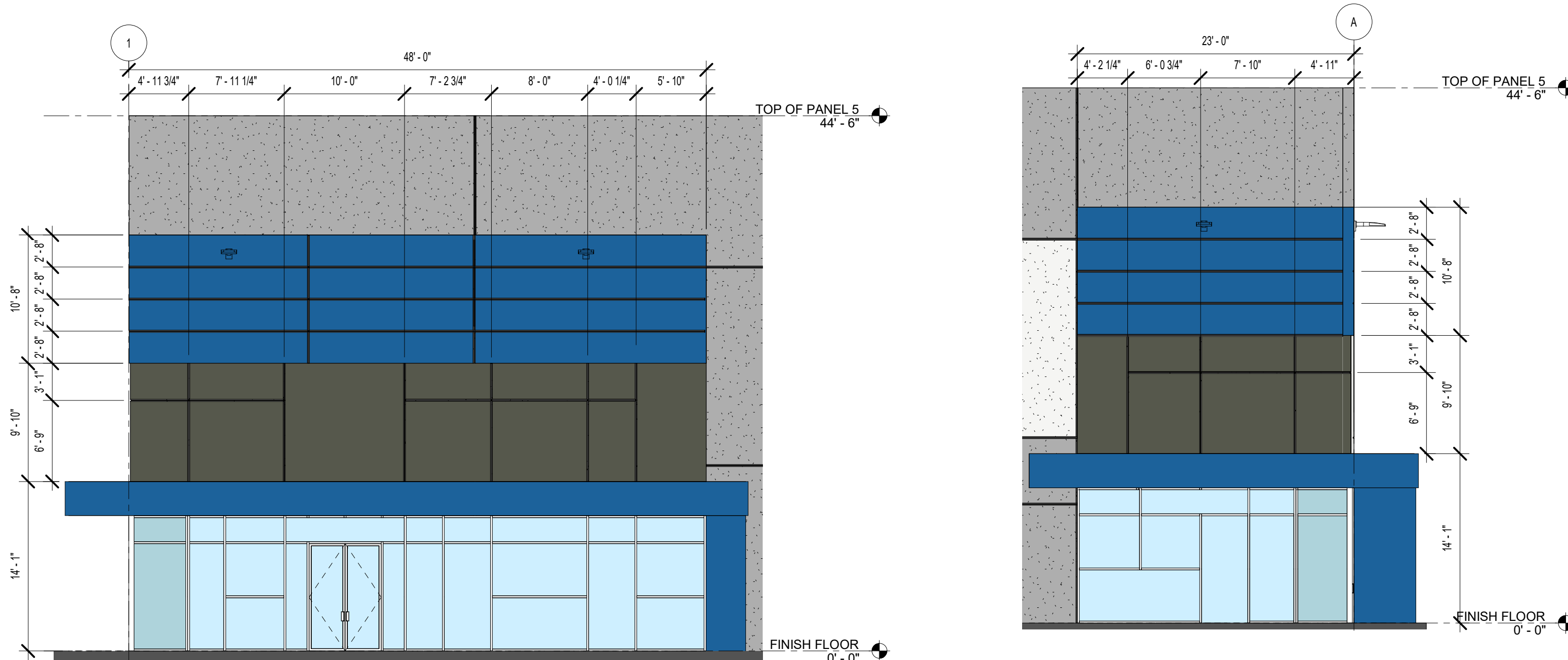
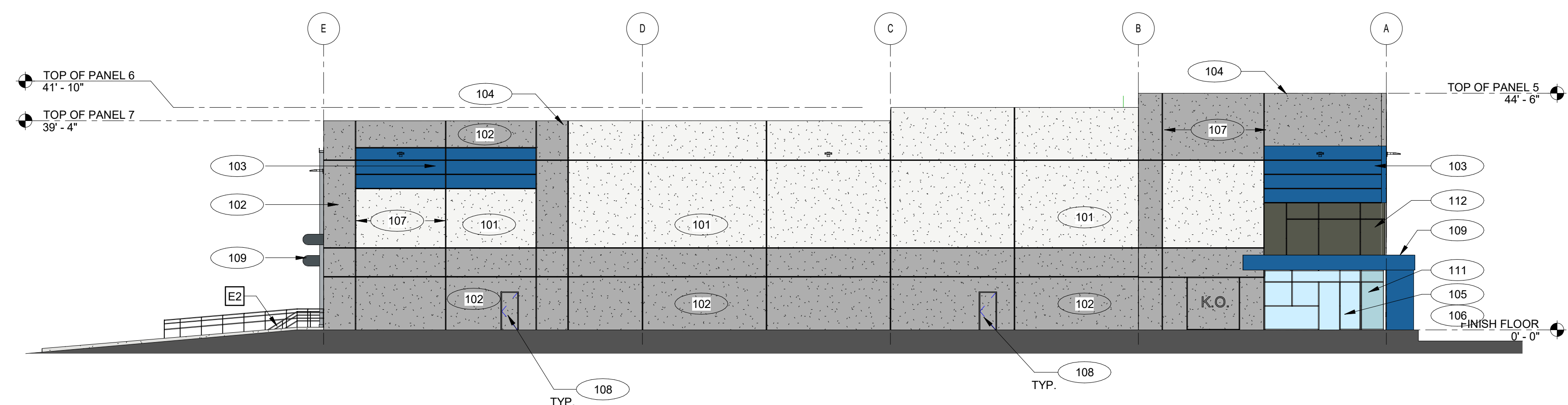
<b>101</b> EXTERIOR TEXTURE COATING: PAINTED CONCRETE SHERWIN WILLIAMS ULTRACRETE OR EQUAL COLOR: TBD	COLOR LEGEND SEE ELEVATION	<b>107</b> JOINT SEALER: S.C.C.P. JOINTS TREMCO DYMERIC 240FC OR EQUAL COLOR: TBD
<b>102</b> EXTERIOR TEXTURE COATING: PAINTED CONCRETE SHERWIN WILLIAMS ULTRACRETE OR EQUAL COLOR: TBD	COLOR LEGEND SEE ELEVATION	<b>108</b> EXTERIOR METAL DOORS & FRAMES COLOR: PAINTED TO MATCH ACCENT WALL
<b>103</b> EXTERIOR TEXTURE COATING: PAINTED CONCRETE SHERWIN WILLIAMS ULTRACRETE OR EQUAL COLOR: TBD	COLOR LEGEND SEE ELEVATION	<b>109</b> PRE-ENGINEERED METAL CANOPY COLOR: TBD
<b>104</b> PRE-FINISHED METAL GRAVEL STOP, GUTTER, COPING, AND DOWNSPOUTS COLOR: PAC-CLAD - TBD		<b>110</b> PRE-ENGINEERED BULLNOSE CANOPY
<b>105</b> ALUMINUM STOREFRONT/CURTAIN WALL AS MANUFACTURED BY KAWNEER COLOR: CLEAR ANODIZED		<b>111</b> SPANDREL GLASS
<b>106</b> JOINT SEALER: ALUM. STOREFRONT TREMCO DYMERIC 240FC OR EQUAL COLOR: ANODIZED ALUMINUM		<b>112</b> T.B.D.

## GENERAL NOTES

- ALL GLASS TO BE TYPE "A" U.N.O. ALL GLASS IN DOORS TO BE TEMPERED.
- ALL GLASS WITHIN 2' OF DOOR SWING TO BE TEMPERED.
- KAWNEER TRI-FAB 451 BASIS OF DESIGN FOR STOREFRONT.
- STOREFRONT SYSTEMS TO BE DESIGNED TO MEET ALL LOCAL AND DESIGN LOADS. SEE STRUCTURAL DRAWINGS FOR DESIGN LOAD REQUIREMENTS.
- EXTERIOR WALL PACKS ARE INCLUDED - SEE ELECTRICAL DRAWINGS FOR LOCATIONS.

## KEYNOTES

- E1** CONCRETE SERVICE RAMP, SEE 12/A.401
- E2** STAIR AND GUARDRAIL, TYP. SEE 6/A.401, 8/A.401, 10/A.401
- E3** DOCK BUMPER - SEE WALL SECTIONS
- E4** LOUVER - SEE MECHANICAL DRAWINGS
- E5** LED WALL PACK - SEE ELECTRICAL DRAWINGS
- E6** 9' X 9' KNOCK-OUT FUTURE FOR LOUVERS
- E7** 5' X 5' KNOCK-OUT FOR FUTURE CLERESTORY WINDOWS
- E8** CONCRETE STAIR AND PLATFORM, SEE 12/A.401
- E9** EXHAUST FAN AND LOUVER, FOR SIZE AND LOCATION COORDINATE WITH MECHANICAL
- E10** DOUBLE DOWNSPOUTS AT WARPED SIDE

**1 OVERALL EAST ELEVATION**  
SCALE: 1" = 30'-0"**2 PARTIAL EAST ELEVATION**  
SCALE: 1/16" = 1'-0"**3 PARTIAL EAST ELEVATION**  
SCALE: 1/16" = 1'-0"**5 ENLARGED EAST ELEVATION**  
SCALE: 1/8" = 1'-0"**6 ENLARGED NORTH ELEVATION1**  
SCALE: 1/8" = 1'-0"**4 OVERALL NORTH ELEVATION1**  
SCALE: 1/16" = 1'-0"



SHEET NAME: EXTERIOR ELEVATIONS SHEET NUMBER: A.202 PROJECT NAME: SOUTH FRONTAGE DISTRIBUTION CENTER

GLASS SCHEDULE

<b>A</b> 1" INSULATED INNER PANE 1/4" OUTER PANE 1/4" INNER PANE HEAT STRENGTHENED OUTER PANE HEAT STRENGTHENED FABRICATOR: TBD STYLE: TBD COLOR: SOLARGREY WITH SOLARBAN 60 OR EQUAL  COATINGS: LowE ON #2 SURFACE  U-VALUE: .30 SHGC: .25	<b>B</b> 1" INSULATED INNER PANE 1/4" OUTER PANE 1/4" INNER PANE TEMPERED OUTER PANE TEMPERED FABRICATOR: TBD STYLE: TBD COLOR: SOLARGREY WITH SOLARBAN 60 OR EQUAL  COATINGS: LowE ON #2 SURFACE  U-VALUE: .30 SHGC: .25	<b>C</b> 1" INSULATED INNER PANE 1/4" OUTER PANE 1/4" INNER PANE TEMPERED OUTER PANE TEMPERED FABRICATOR: GUARDIAN GLASS STYLE: SUNGUARD SN 68 WITH DECO HT COLOR: GRAY-CLEAR COATINGS: Low-E ON #2 SURFACE WITH #4 SURFACE BLACK SPANDREL  U-VALUE: - SHGC: -	<b>D</b> 1" INSULATED INNER PANE 1/4" OUTER PANE 1/4" INNER PANE HEAT STRENGTHENED OUTER PANE HEAT STRENGTHENED FABRICATOR: TBD STYLE: MEDIUM GRAY FRIT COLOR: PATTERN ON SURFACE GUARDIAN GLASS SUNGUARD SN 68 GRAY-CLEAR  COATINGS: LowE ON #2 SURFACE  U-VALUE: .29 SHGC: .25
---	---	---	---

NOTE: PROJECTS LOCATED WITHIN A MILE OF THE COASTAL MEAN HIGH WATER LINE AND HAVE DESIGN WIND SPEEDS OVER 130 MPH ARE TO BE CONSIDERED WIND-BORNE DEBRIS REGIONS. G.C. TO CONFIRM.  
NOTE: GLASS "A" SHALL ONLY BE USED AT AREAS NOT REQUIRED TO MEET 2018 IRC SECTION 2406.  
GLASS "D" SHALL BE USED AT AREAS AS PRESCRIBED IN 2018 IRC SECTION 2406, AS WELL AS HIGH ELEVATION AREAS TO PREEMPT THE HAZARDOUS POSSIBILITY OF BROKEN GLAZING FALLING UPON OCCUPANTS.

EXTERIOR FINISH SCHEDULE

<b>101</b> EXTERIOR TEXTURE COATING: PAINTED CONCRETE SHERWIN WILLIAMS ULTRACRETE OR EQUAL COLOR: TBD	COLOR LEGEND SEE ELEVATION
<b>102</b> EXTERIOR TEXTURE COATING: PAINTED CONCRETE SHERWIN WILLIAMS ULTRACRETE OR EQUAL COLOR: TBD	COLOR LEGEND SEE ELEVATION
<b>103</b> EXTERIOR TEXTURE COATING: PAINTED CONCRETE SHERWIN WILLIAMS ULTRACRETE OR EQUAL COLOR: TBD	COLOR LEGEND SEE ELEVATION
<b>104</b> PRE-FINISHED METAL GRAVEL STOP, GUTTER, COPING, AND DOWNSPOUTS COLOR: PAC-CLAD - TBD	
<b>105</b> ALUMINUM STOREFRONT/CURTAIN WALL AS MANUFACTURED BY KAWNEER COLOR: CLEAR ANODIZED	
<b>106</b> JOINT SEALER: ALUM. STOREFRONT TREMCO DYMERIC 240FC OR EQUAL COLOR: ANODIZED ALUMINUM	

<b>107</b> JOINT SEALER: S.C.C.P. JOINTS TREMCO DYMERIC 240FC OR EQUAL COLOR: TBD	
<b>108</b> EXTERIOR METAL DOORS & FRAMES COLOR: PAINTED TO MATCH ACCENT WALL	
<b>109</b> PRE-ENGINEERED METAL CANOPY COLOR: TBD	
<b>110</b> PRE-ENGINEERED BULLNOSE CANOPY	
<b>111</b> SPANDREL GLASS	
<b>112</b> T.B.D.	

GENERAL NOTES

- ALL GLASS TO BE TYPE "A" U.N.O. ALL GLASS IN DOORS TO BE TEMPERED.
- ALL GLASS WITHIN 2' OF DOOR SWING TO BE TEMPERED.
- KAWNEER TRI-FAB 451 BASIS OF DESIGN FOR STOREFRONT.
- STOREFRONT SYSTEMS TO BE DESIGNED TO MEET ALL LOCAL AND DESIGN LOADS. SEE STRUCTURAL DRAWINGS FOR DESIGN LOAD REQUIREMENTS.
- EXTERIOR WALL PACKS ARE INCLUDED - SEE ELECTRICAL DRAWINGS FOR LOCATIONS.

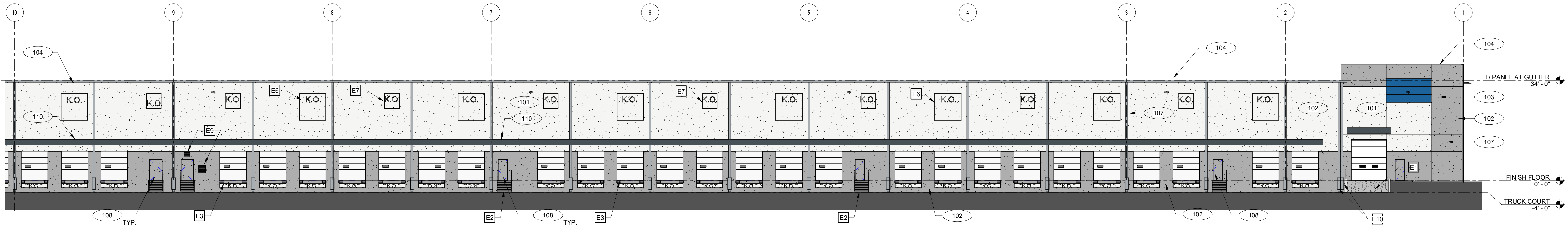
KEYNOTES

- E1** CONCRETE SERVICE RAMP, SEE 12/A.401
- E2** STAIR AND GUARDRAIL, TYP. SEE 6/A.401, 8/A.401, 10/A.401
- E3** DOCK BUMPER - SEE WALL SECTIONS
- E4** LOUVER - SEE MECHANICAL DRAWINGS
- E5** LED WALL PACK - SEE ELECTRICAL DRAWINGS
- E6** 9' X 9' KNOCK-OUT FUTURE FOR LOUVERS
- E7** 5' X 5' KNOCK-OUT FOR FUTURE CLERESTORY WINDOWS
- E8** CONCRETE STAIR AND PLATFORM, SEE 12/A.401
- E9** EXHAUST FAN AND LOUVER, FOR SIZE AND LOCATION COORDINATE WITH MECHANICAL
- E10** DOUBLE DOWNSPOUTS AT WARPED SIDE



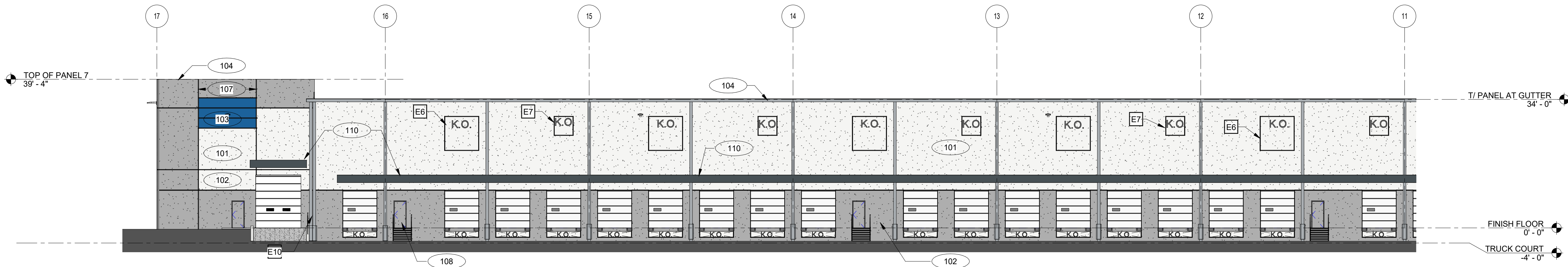
1 OVERALL WEST ELEVATION

SCALE: 1" = 30'-0"



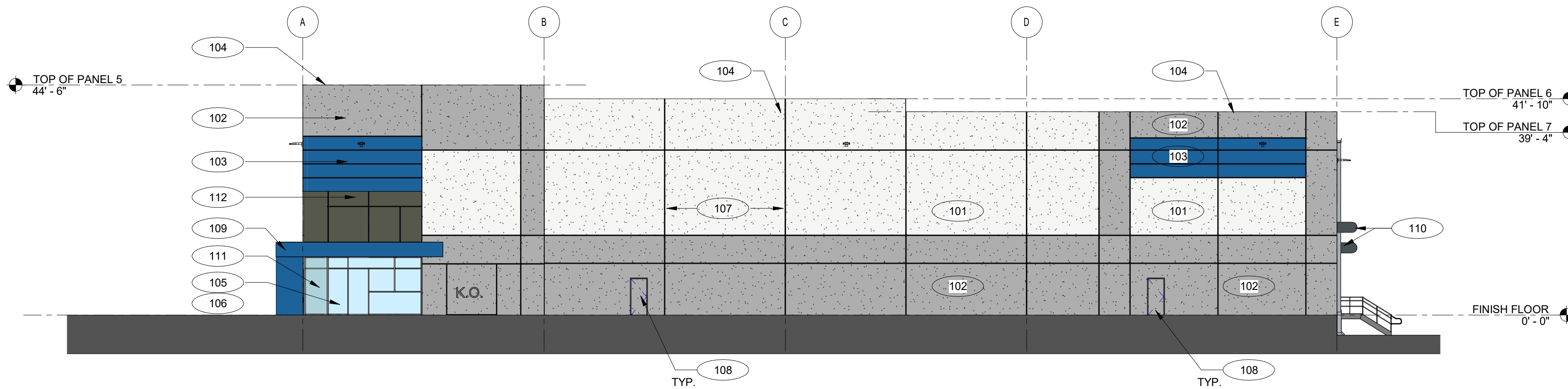
2 PARTIAL WEST ELEVATION

SCALE: 1/16" = 1'-0"



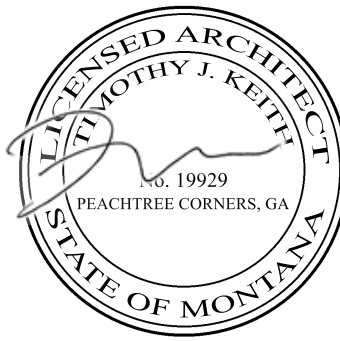
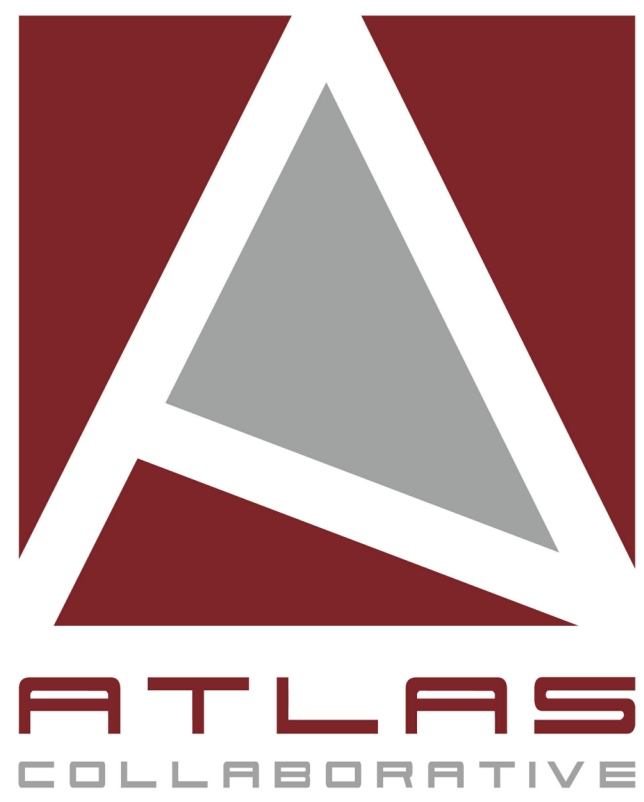
3 PARTIAL WEST ELEVATION

SCALE: 1/16" = 1'-0"



4 OVERALL SOUTH ELEVATION1

SCALE: 1/16" = 1'-0"



SOUTH FRONTAGE  
DISTRIBUTION CENTER

BUILDING 200

BILLINGS, MONTANA

©2020, Atlas Collaborative LLC. These drawings are protected by the copyright laws of the United States. These drawings or any part thereof may not be used for any purpose or reproduced in any form or by any means without the written consent of Atlas Collaborative, LLC.

Print Record

28 February 2022

ISSUED FOR PERMIT

Revisions

Issue Date

03/28/2022

Job No.

2201005

Sheet Title

EXTERIOR ELEVATIONS

Sheet No.

A.202

ISSUED FOR CONSTRUCTION

FILE PATH: BM 360/2201005 - South Frontage DC2201005 - South Frontage DC200.nt