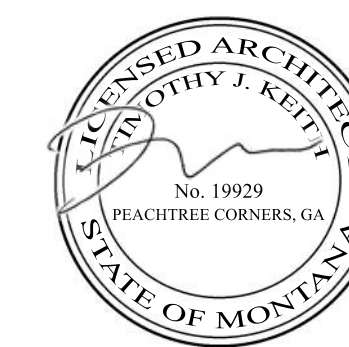


NOTE: ARCHITECTURAL SITE PLAN FOR
REFERENCE ONLY. SEE CIVIL DRAWINGS
FOR OFFICIAL SITE PLAN.

1 SITE PLAN
SCALE: 1" = 40'-0"

SCALE: 1" = 40'-0"



SOUTH FRONTAGE
DISTRIBUTION CENTER

BUILDING 100

BILLINGS, MONTANA

©2020, Atlas Collaborative LLC. These drawings are protected by the copyright laws of the United States. These drawings or any part thereof may not be used for any purpose or reproduced in any form or by any means without the written consent of Atlas Collaborative, LLC.

[Print Record](#)

28 February 2022

ISSUED FOR PERMIT

Revisions

Issue Date

03/28/2022

Job No. _____

2201005

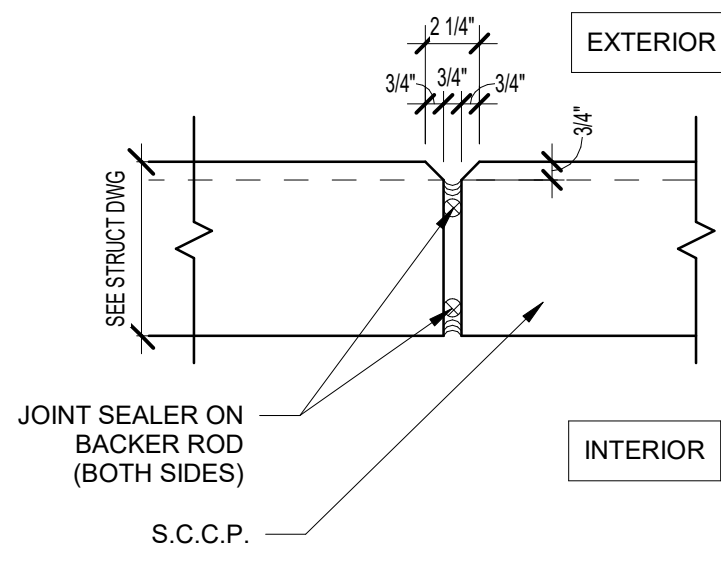
Sheet Title

ARCHITECTURAL SITE
PLAN

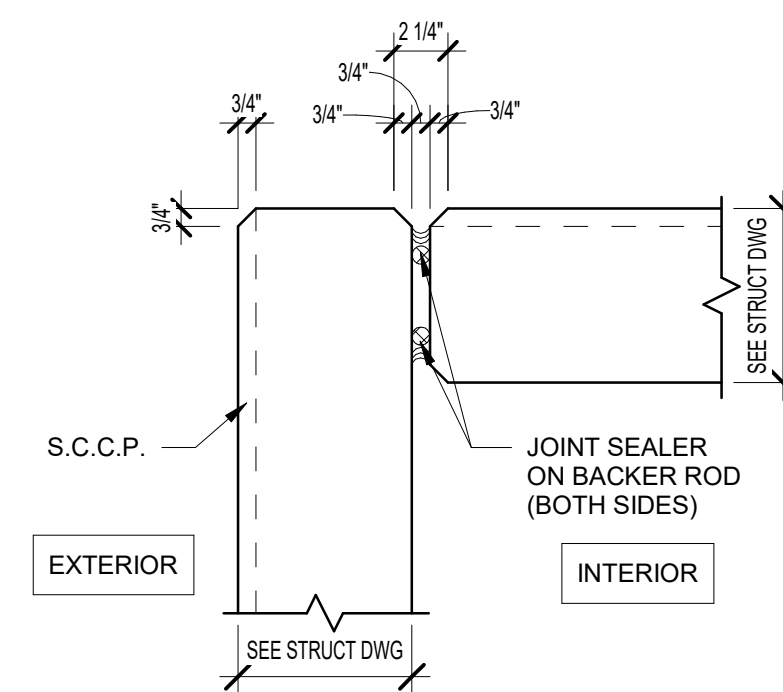
Sheet No. _____

A.013

ISSUED FOR CONSTRUCTION



3 TYPICAL S.C.C.P. JOINT DETAIL
SCALE: 1 1/2" = 1'-0"



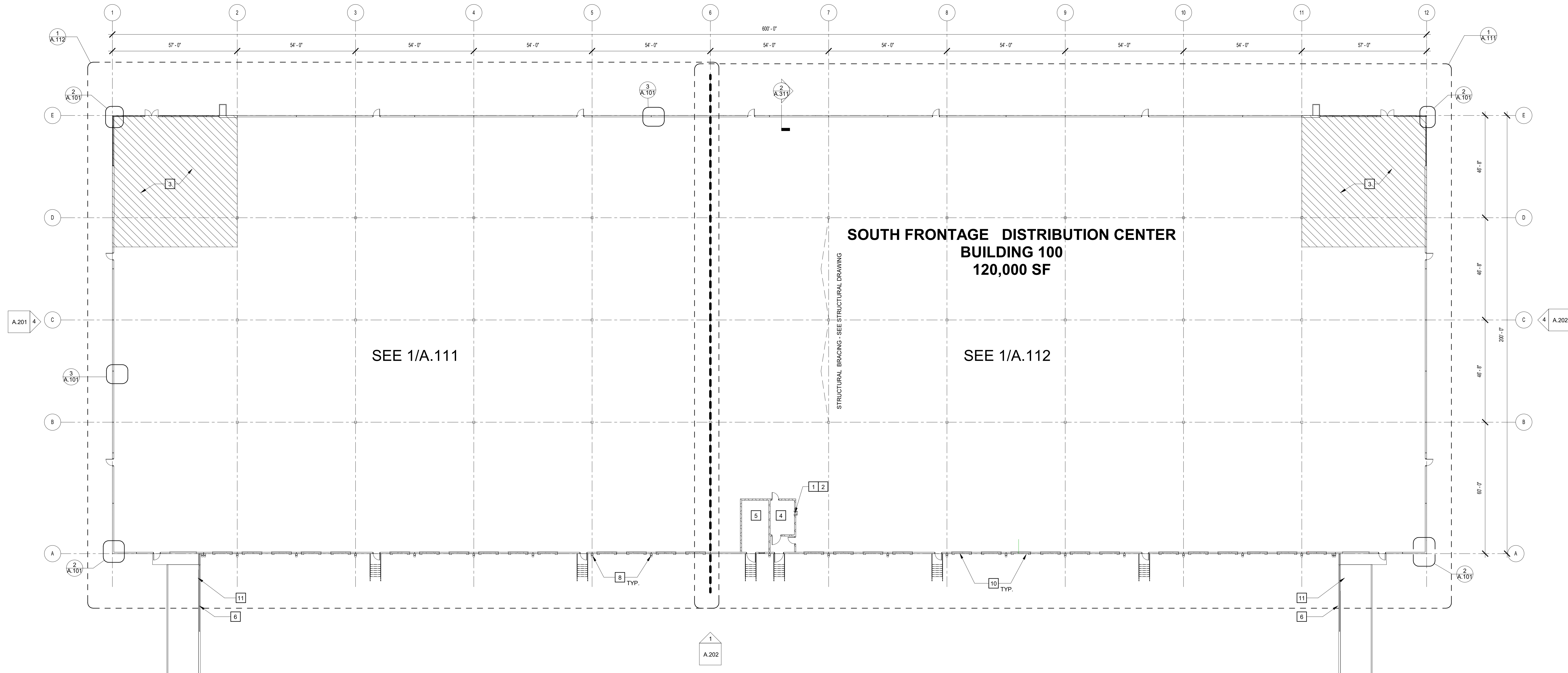
2 TYP. S.C.C.P. CORNER DETAIL
SCALE: 1 1/2" = 1'-0"

KEYNOTES

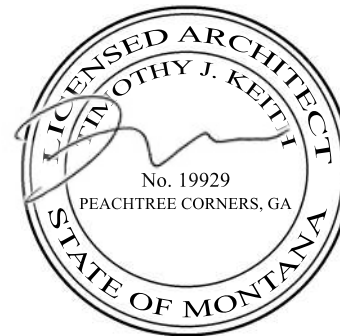
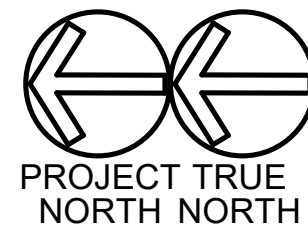
- 1 ACCESS LADDER TO CONCRETE ROOF OF ELECTRICAL ROOM - SEE ENLARGED PLANS.
- 2 3'-0" X 3'-0" ROOF HATCH WITH ACCESS LADDER FROM CONCRETE ROOF AT ELECTRICAL ROOF BELOW. G.C. TO COORDINATE WITH STRUCTURE. PAINTED SAFETY YELLOW - SEE ENLARGED PLANS AND ROOF PLAN.
- 3 FUTURE TENANT OFFICES
- 4 ELECTRICAL ROOM - 1 HOUR RATED
- 5 FIRE PUMP ROOM - 1 HOUR RATED
- 6 RAMP GUARDRAIL - SEE DETAILS 4, 12 & 13 ON A.401
- 7 5' X 5' CONCRETE PAD, SLOPE AWAY FROM BUILDING AT 1/4" PER FT. MAX.
- 8 9" X 9" 24 GAUGE METAL DOWNSPOUTS WITH KYNAR FINISH
- 9 RECESSED CAN LIGHT IN SOFFIT ABOVE. SEE ELECTRICAL
- 10 9' X 10' DOCK DOOR
- 11 12' X 14' DRIVE-IN RAMP DOOR

GENERAL NOTES

1. BUILDING TO BE 32' CLEAR JUST PAST THE FIRST COLUMN LINE IN FROM THE DOCK WALL.
2. SLAB CONTROL JOINTS TO BE SAWCUT AND NOT TO EXCEED 15' - 0" ON CENTER. SEE STRUCTURAL DRAWINGS FOR FLOOR SLAB CONTROL JOINTS.
3. SLAB CONSTRUCTION JOINTS TO HAVE SMOOTH DOWELS AT 24" O.C. OR STEEL DIAMOND PLATES - SEE STRUCTURAL DRAWINGS.
4. SLAB WILL BE CURED WITH A WATER-BASED DISSIPATIVE CURING COMPOUND AND WILL RECEIVE ONE COAT SONNEBORNE LAPIDOLITH FLOOR HARDENER.
5. SLAB ON GRADE WILL BE PRE-TREATED WITH TERMITICIDE.
6. 10-MIL VAPOR BARRIER TO BE PROVIDED BELOW THE SLAB ON GRADE THROUGHOUT. ALL SEAMS AND PENETRATIONS TO BE SEALED AND TAPED.
7. 6" THICK REINFORCED, 4000 PSI CONCRETE SLAB BEARING ON 6" GAB. SLAB TO RECEIVE HARD TROWEL FINISH AND LASER SCREED SHALL BE UTILIZED TO ATTAIN MINIMUM LOCAL & OVERALL SLAB TOLERANCE OF FF 40/FI 30.
8. PROVIDE A ESFR SPRINKLER SYSTEM THROUGHOUT.
9. PROVIDE PORTABLE FIRE EXTINGUISHERS OF THE QUANTITY AND AT THE LOCATIONS AS INDICATED OR AS REQUIRED BY THE AUTHORITY HAVING JURISDICTION. EXTINGUISHERS SHALL BE EQUAL TO J.L. INDUSTRIES COSMIC 10E, 10 POUND, 4A-60BC. TO BE COORDINATED WITH OWNERS LAYOUT.
10. METAL ROOF DECK SHALL BE 1-1/2" TYPE "B" WIDE RIB DECKING SHOP PRIMED WHITE - SEE STRUCTURAL DRAWINGS.
11. RACKING, FLOOR STORAGE AND EQUIPMENT BY OTHERS.
12. SEE ELEVATIONS FOR GLASS SCHEDULE.
13. ALL BOLLARDS TO BE PAINTED SAFETY YELLOW. (PROVIDE BOLLARDS AT ALL DRIVE-IN OVERHEAD DOOR JAMBS, FIRE PROTECTION RISERS, ELECTRICAL TRANSFORMERS AND EXPOSED ELECTRICAL PANELS).
14. ALL BOLLARDS SHALL BE 6" O.D. SCHEDULE 80 STEEL PIPE SET MINIMUM 2'-0" DEEP IN 2'-0" DIAMETER CONCRETE FOOTING WITH PIPE EXTENDED 4'-0" ABOVE PAVING OR FLOOR. FILL PIPE WITH CONCRETE AND DOME TOP - FOOTING TO BE IN SONOTUBE.
15. ROOF ASSEMBLY: SINGLE PLY 45 MIL WHITE TPO MEMBRANE SYSTEM MECHANICALLY FASTENED OVER R-35 ROOF INSULATIN OVER ENTIRE PROOF. OVER 1-1/2" METAL DECK, ROOF DECK WILL BE SHOP PRIMED WHITE, INCLUDING THE EDGES. 20-YEAR NOL WARRANTY.
16. ALL STAIRS AND RAILINGS TO BE GALVANIZED. ALL MISC. STEEL TO BE HD GALVANIZED FOR EXTERIOR APPLICATIONS.
17. ALL SITE CAST CONCRETE PANEL WIDTHS ARE TO CENTERLINE OF CONCRETE PANEL VERTICAL JOINT U.N.O.
18. ALL TILE WALL PANELS SHALL BE CAULKED TO FULL HEIGHT, BOTH SIDES, WITH MASTERSEAL NP-2 POLYURETHANE SEALANT OR EQUAL WITH BACKER ROD BEHIND THE CAULK.
19. (EXTERIOR) ALL S.C.C.P. SHALL RECEIVE A TEXTURED ACRYLIC COATING SIMILAR TO SHERWIN WILLIAMS ULTRACRETE (MEDIUM TEXTURE) WITH ACCENT STRIPING. SEE ELEVATIONS.
20. (INTERIOR) WHERE NO INSULATION S.C.C.P. PANELS WILL BE HARD TROWEL FINISHED WITH CAPPED PICK AND BRACE POINTS AND SHALL RECEIVE ONE COAT OF WHITE LATEX PAINT.
21. PERSONNEL DOORS AND MISC. METALS SHALL RECEIVE ONE (1) PRIMER COAT AND ONE (1) FINISH COAT OF ENAMEL. PROVIDE FIRE DEPARTMENT ACCESS SIGNAGE PER DETAIL 9A.002 AT EACH PERSONNEL DOOR.
22. INTERIOR COLUMNS TO BE PAINTED SAFETY YELLOW TO 12' A.F.F. WITH RED STRIPE ABOVE YELLOW, WHERE FIRE EXTINGUISHERS
23. STEEL GUARDS TO BE PROVIDED AT ALL OVERHEAD DOORS.
24. INTERIOR WALLS TO RECEIVE R-19 RIGID INSULATION - ENTIRE WALLS ALL WALLS OTHER THAN DOCK WALL WHERE INSULATION WILL BE FROM 100" A.F.F. TO DECK



1 OVERALL FLOOR PLAN
SCALE: 1" = 20'-0"



SOUTH FRONTAGE
DISTRIBUTION CENTER

BUILDING 100

BILLINGS, MONTANA

©2020, Atlas Collaborative LLC. These drawings are protected by the copyright laws of the United States. These drawings or any part thereof may not be used for any purpose or reproduced in any form or by any means without the written consent of Atlas Collaborative, LLC.

Print Record
28 February 2022 ISSUED FOR PERMIT

Revisions

Issue Date 03/28/2022 Job No. 2201005
Sheet Title

OVERALL FLOOR PLAN

Sheet No.
A.101
ISSUED FOR CONSTRUCTION

GLASS SCHEDULE

A 1" INSULATED INNER PANE 1/4" OUTER PANE 1/4" INNER PANE HEAT STRENGTHENED OUTER PANE HEAT STRENGTHENED FABRICATOR: TBD STYLE: TBD COLOR: SOLARGREY WITH SOLARBAN 60 OR EQUAL COATINGS: LowE ON #2 SURFACE U-VALUE: .30 SHGC: .25	B 1" INSULATED INNER PANE 1/4" OUTER PANE 1/4" INNER PANE TEMPERED OUTER PANE TEMPERED FABRICATOR: TBD STYLE: TBD COLOR: SOLARGREY WITH SOLARBAN 60 OR EQUAL COATINGS: LowE ON #2 SURFACE U-VALUE: .30 SHGC: .25	C 1" INSULATED INNER PANE 1/4" OUTER PANE 1/4" INNER PANE TEMPERED OUTER PANE TEMPERED FABRICATOR: GUARDIAN GLASS STYLE: SUNGUARD SN 68 WITH DECO HT COLOR: GRAY-CLEAR COATINGS: Low-E ON #2 SURFACE WITH #4 SURFACE BLACK SPANDREL U-VALUE: . SHGC: .	D 1" INSULATED INNER PANE 1/4" OUTER PANE 1/4" INNER PANE HEAT STRENGTHENED OUTER PANE HEAT STRENGTHENED FABRICATOR: GUARDIAN GLASS STYLE: SUNGUARD SN 68 WITH DECO HT COLOR: GRAY-CLEAR COATINGS: LowE ON #2 SURFACE U-VALUE: .29 SHGC: .25
---	---	---	---

NOTE: PROJECTS LOCATED WITHIN A MILE OF THE COASTAL MEAN HIGH WATER LINE AND HAVE DESIGN WIND SPEEDS OVER 130 MPH ARE TO BE CONSIDERED WIND-BORNE DEBRIS REGIONS. PROVIDE IMPACT RATED GLASS IN WIND-BORNE DEBRIS REGIONS. G.C. TO CONFIRM.
NOTE: GLASS "A" SHALL ONLY BE USED AT AREAS NOT REQUIRED TO MEET 2018 IBC SECTION 2406. GLASS "B" SHALL BE USED AT AREAS AS PRESCRIBED IN 2018 IBC SECTION 2406. AS WELL AS HIGH ELEVATION AREAS TO PREEMPT THE HAZARDOUS POSSIBILITY OF BROKEN GLAZING FALLING UPON OCCUPANTS.

EXTERIOR FINISH SCHEDULE

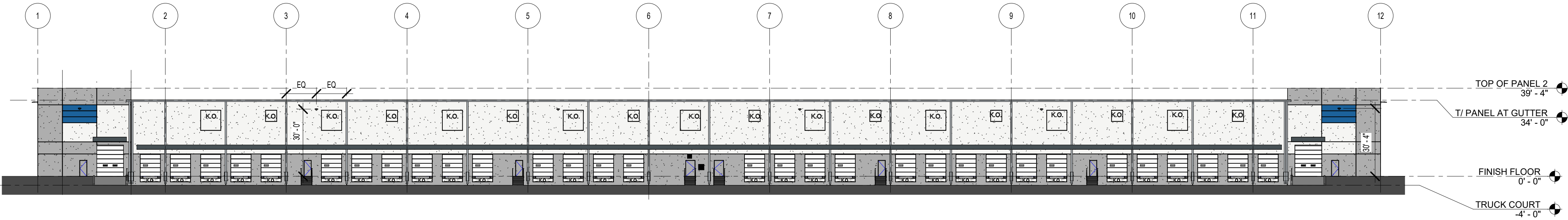
101 EXTERIOR TEXTURE COATING: PAINTED CONCRETE SHERWIN WILLIAMS ULTRACRETE OR EQUAL COLOR: TBD	COLOR LEGEND SEE ELEVATION	107 JOINT SEALER: S.C.C.P. JOINTS TREMCO DYMERIC 240FC OR EQUAL COLOR: TBD
102 EXTERIOR TEXTURE COATING: PAINTED CONCRETE SHERWIN WILLIAMS ULTRACRETE OR EQUAL COLOR: TBD	COLOR LEGEND SEE ELEVATION	108 EXTERIOR METAL DOORS & FRAMES COLOR: PAINTED TO MATCH ACCENT WALL
103 EXTERIOR TEXTURE COATING: PAINTED CONCRETE SHERWIN WILLIAMS ULTRACRETE OR EQUAL COLOR: TBD	COLOR LEGEND SEE ELEVATION	109 PRE-ENGINEERED METAL CANOPY COLOR: TBD
104 PRE-FINISHED METAL GRAVEL STOP, GUTTER, COPING, AND DOWNSPOUTS COLOR: PAC-CLAD - TBD		110 PRE-ENGINEERED BULLNOSE CANOPY
105 ALUMINUM STOREFRONT/CURTAIN WALL AS MANUFACTURED BY KAWNEER COLOR: CLEAR ANODIZED		111 SPANDREL GLASS
106 JOINT SEALER: ALUM. STOREFRONT TREMCO DYMERIC 240FC OR EQUAL COLOR: ANODIZED ALUMINUM		112 PAINT CONCRETE AND REVEAL - COLOR T.B.D.

GENERAL NOTES

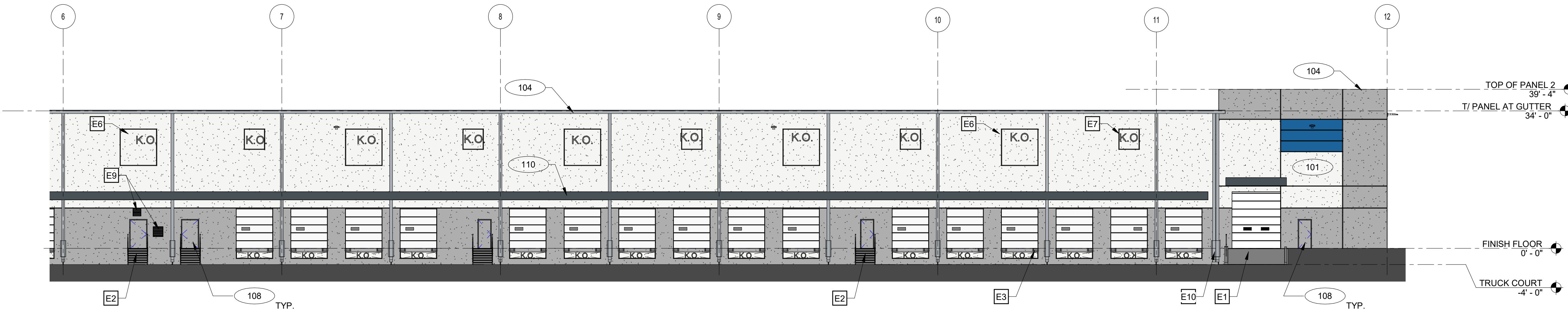
- ALL GLASS TO BE TYPE "A" U.N.O. ALL GLASS IN DOORS TO BE TEMPERED.
- ALL GLASS WITHIN 2' OF DOOR SWING TO BE TEMPERED.
- KAWNEER TRI-FAB 451 BASIS OF DESIGN FOR STOREFRONT.
- STOREFRONT SYSTEMS TO BE DESIGNED TO MEET ALL LOCAL AND DESIGN LOADS. SEE STRUCTURAL DRAWINGS FOR DESIGN LOAD REQUIREMENTS.
- EXTERIOR WALL PACKS ARE INCLUDED - SEE ELECTRICAL DRAWINGS FOR LOCATIONS.

KEYNOTES

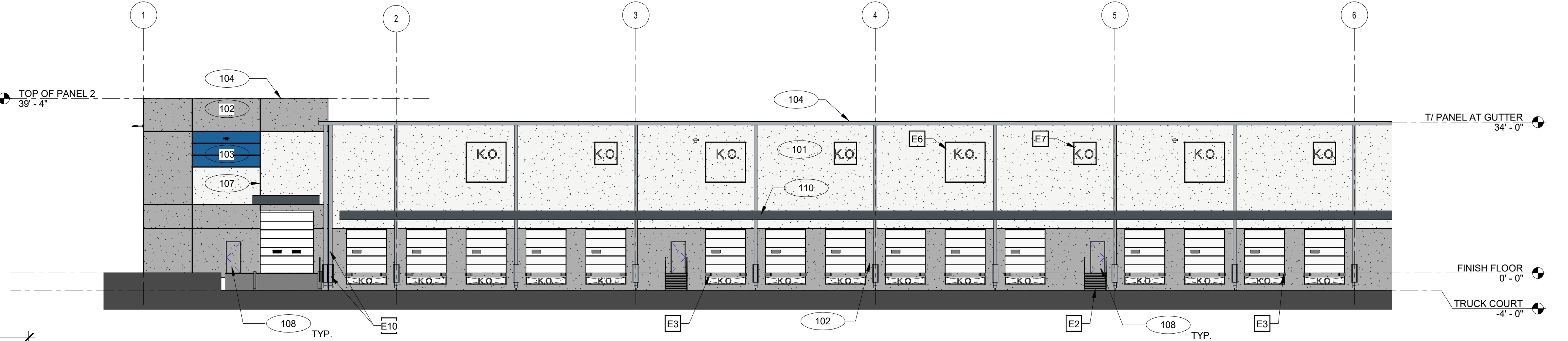
- E1 CONCRETE SERVICE RAMP, SEE 12/A.401
- E2 STAIR AND GUARDRAIL, TYP. SEE 6/A.401, 8/A.401, 10/A.401
- E3 DOCK BUMPER - SEE WALL SECTIONS
- E4 LOUVER - SEE MECHANICAL DRAWINGS
- E5 LED WALL PACK - SEE ELECTRICAL DRAWINGS
- E6 9' X 9' KNOCK- OUT FOR FUTURE LOUVERS
- E7 5' X 5' KNOCK- OUT FOR FUTURE CLERESTORY WINDOWS
- E8 CONCRETE STAIR AND PLATFORM, SEE 12/A.401
- E9 EXHAUST FAN AND LOUVER, FOR SIZE AND LOCATION COORDINATE WITH MECHANICAL
- E10 DOUBLE DOWNSPOUTS AT WARPED SIDE



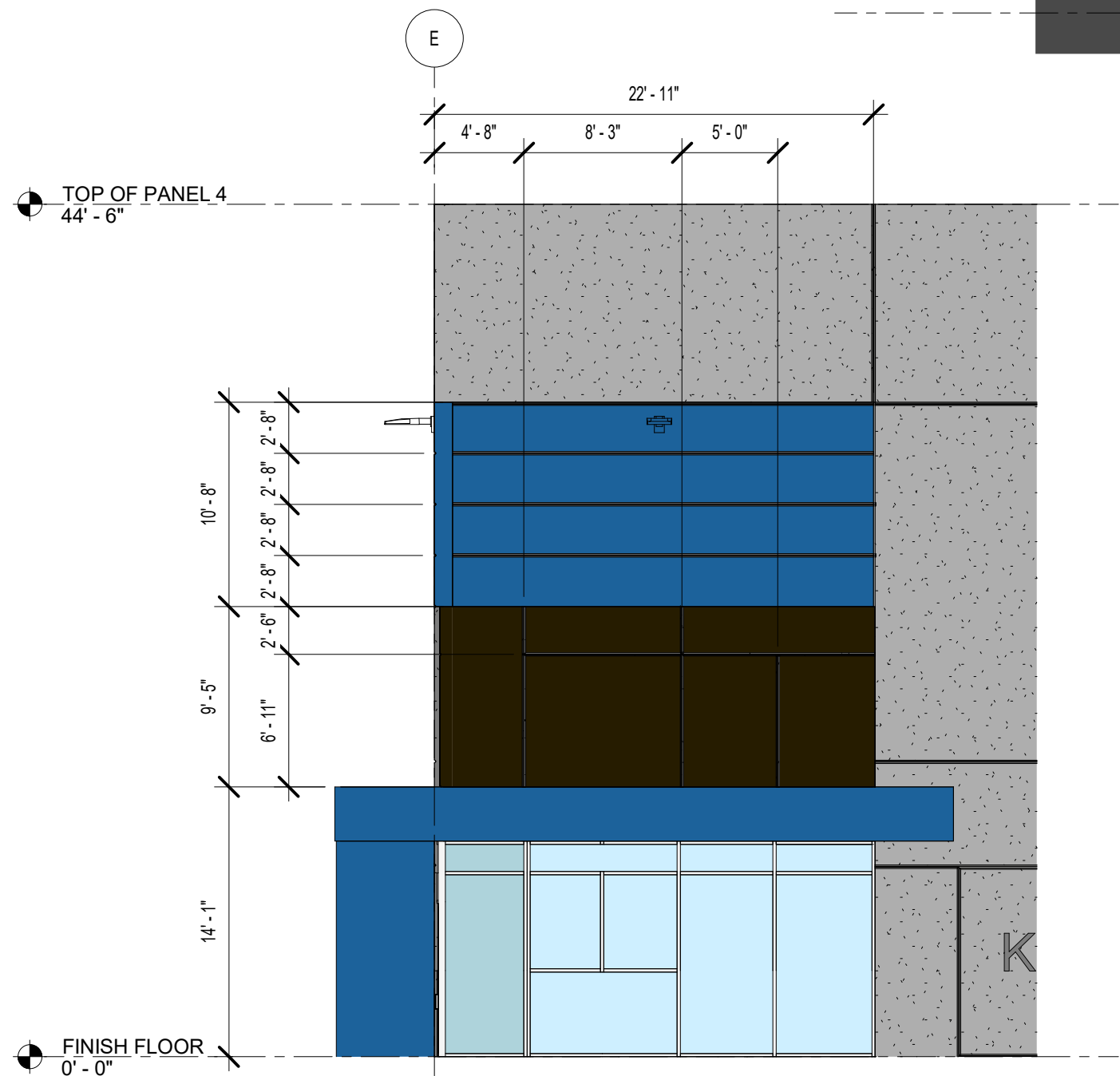
1 OVERALL WEST ELEVATION
SCALE: 1" = 30'-0"



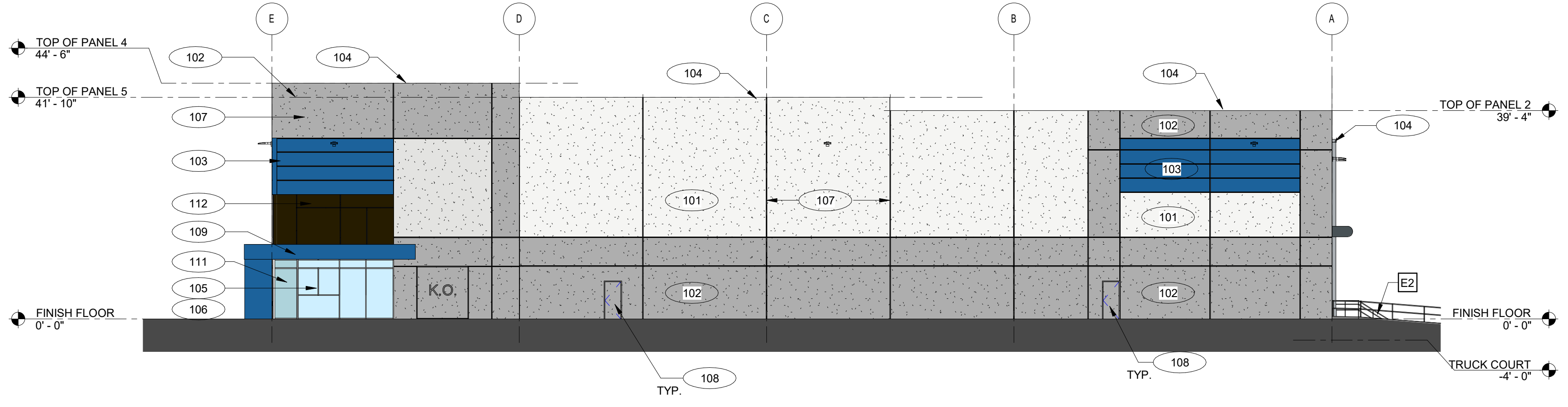
2 PARTIAL WEST ELEVATION
SCALE: 1/16" = 1'-0"



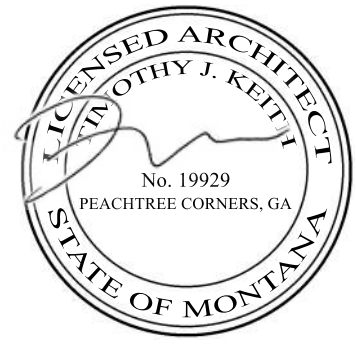
3 PARTIAL WEST ELEVATION
SCALE: 1/16" = 1'-0"



5 ENLARGED SOUTH ELEVATION
SCALE: 1/8" = 1'-0"



4 OVERALL SOUTH ELEVATION
SCALE: 1/16" = 1'-0"



SOUTH FRONTAGE
DISTRIBUTION CENTER

BUILDING 100

BILLINGS, MONTANA

©2020, Atlas Collaborative LLC. These drawings are protected by the copyright laws of the United States. These drawings or any part thereof may not be used for any purpose or reproduced in any form or by any means without the written consent of Atlas Collaborative, LLC.

Print Record
28 February 2022 ISSUED FOR PERMIT

Revisions

Issue Date 03/28/2022 Job No. 2201005

Sheet Title

EXTERIOR ELEVATIONS

Sheet No.

A.201

ISSUED FOR CONSTRUCTION

GLASS SCHEDULE

A 1" INSULATED INNER PANE 1/4" OUTER PANE 1/4" INNER PANE HEAT STRENGTHENED OUTER PANE HEAT STRENGTHENED FABRICATOR: TBD STYLE: TBD COLOR: SOLARGREY WITH SOLARBAN 60 OR EQUAL COATINGS: LowE ON #2 SURFACE U-VALUE: .30 SHGC: .25	B 1" INSULATED INNER PANE 1/4" OUTER PANE 1/4" INNER PANE TEMPERED OUTER PANE TEMPERED FABRICATOR: TBD STYLE: TBD COLOR: SOLARGREY WITH SOLARBAN 60 OR EQUAL COATINGS: LowE ON #2 SURFACE U-VALUE: .30 SHGC: .25	C 1" INSULATED INNER PANE 1/4" OUTER PANE 1/4" INNER PANE TEMPERED OUTER PANE TEMPERED GUARDIAN GLASS SUNGUARD SN 68 WITH DECO HT GRAY-CLEAR LowE ON #2 SURFACE WITH #4 SURFACE BLACK SPANDREL FABRICATOR: TBD STYLE: TBD COLOR: TBD COATINGS: LowE ON #2 SURFACE U-VALUE: .29 SHGC: .25	D 1" INSULATED INNER PANE 1/4" OUTER PANE 1/4" INNER PANE HEAT STRENGTHENED OUTER PANE HEAT STRENGTHENED GUARDIAN GLASS SUNGUARD SN 68 PATTERN ON SURFACE FABRICATOR: TBD STYLE: TBD COLOR: TBD COATINGS: LowE ON #2 SURFACE U-VALUE: .29 SHGC: .25
---	---	---	---

NOTE: PROJECTS LOCATED WITHIN A MILE OF THE COASTAL MEAN HIGH WATER LINE AND HAVE DESIGN WIND SPEEDS OVER 130 MPH ARE TO BE CONSIDERED WIND-BORNE DEBRIS REGIONS. PROVIDE IMPACT RATED GLASS IN WIND-BORNE DEBRIS REGIONS. G.C. TO CONFIRM.
NOTE: GLASS "A" SHALL ONLY BE USED AT AREAS NOT REQUIRED TO MEET 2018 IBC SECTION 2406. GLASS "B" SHALL BE USED AT AREAS AS PRESCRIBED IN 2018 IBC SECTION 2406, AS WELL AS HIGH ELEVATION AREAS TO PREEMPT THE HAZARDOUS POSSIBILITY OF BROKEN GLAZING FALLING UPON OCCUPANTS.

EXTERIOR FINISH SCHEDULE

101 EXTERIOR TEXTURE COATING: PAINTED CONCRETE SHERWIN WILLIAMS ULTRACRETE OR EQUAL COLOR: TBD	COLOR LEGEND SEE ELEVATION
102 EXTERIOR TEXTURE COATING: PAINTED CONCRETE SHERWIN WILLIAMS ULTRACRETE OR EQUAL COLOR: TBD	COLOR LEGEND SEE ELEVATION
103 EXTERIOR TEXTURE COATING: PAINTED CONCRETE SHERWIN WILLIAMS ULTRACRETE OR EQUAL COLOR: TBD	COLOR LEGEND SEE ELEVATION
104 PRE-FINISHED METAL GRAVEL STOP, GUTTER, COPING, AND DOWNSPOUTS COLOR: PAC-CLAD - TBD	
105 ALUMINUM STOREFRONT/CURTAIN WALL AS MANUFACTURED BY KAWNEER COLOR: CLEAR ANODIZED	
106 JOINT SEALER: ALUM. STOREFRONT TREMCO DYMERIC 240FC OR EQUAL COLOR: ANODIZED ALUMINUM	

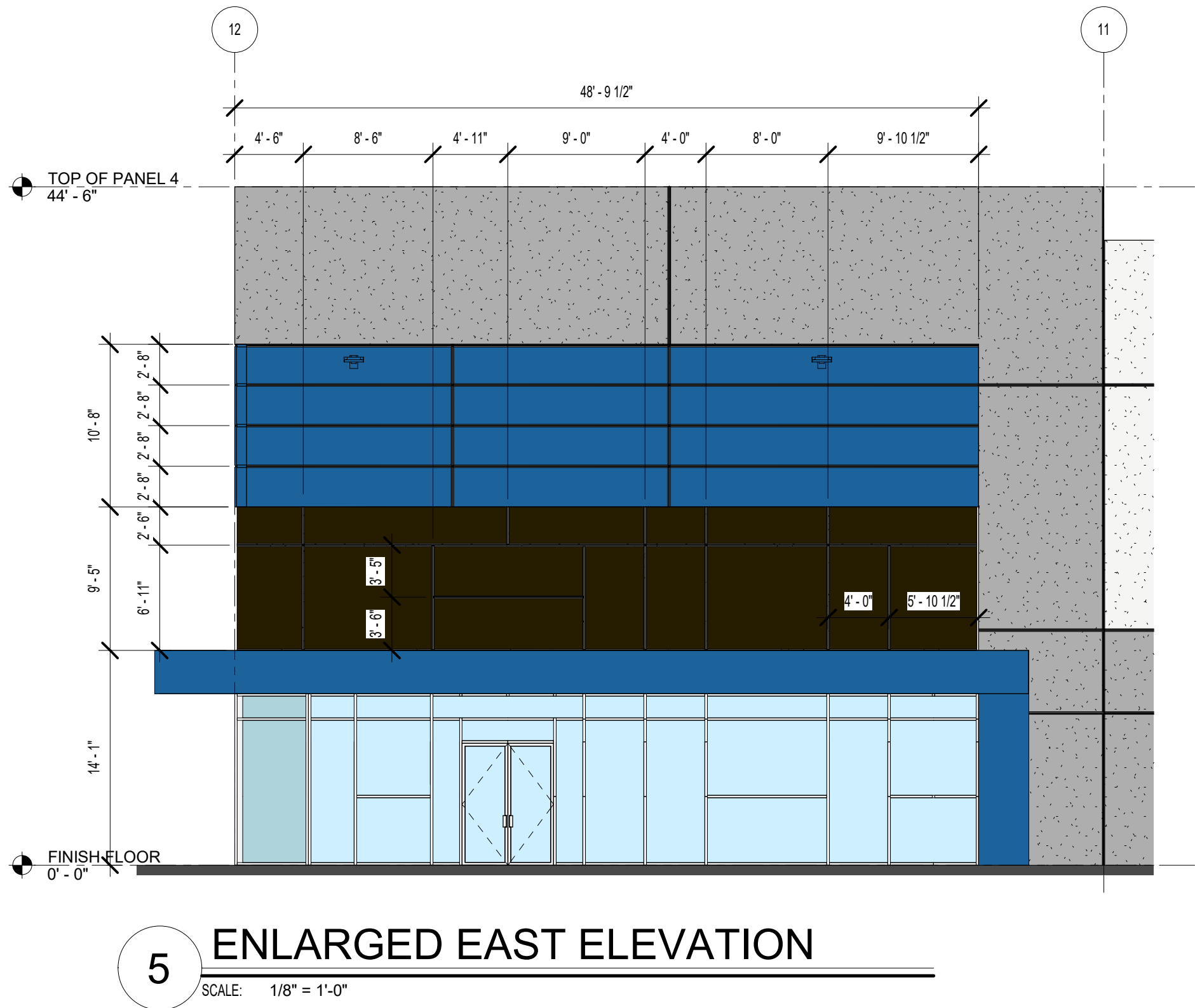
107 JOINT SEALER: S.C.C.P. JOINTS TREMCO DYMERIC 240FC OR EQUAL COLOR: TBD	
108 EXTERIOR METAL DOORS & FRAMES COLOR: PAINTED TO MATCH ACCENT WALL	
109 PRE-ENGINEERED METAL CANOPY COLOR: TBD	
110 PRE-ENGINEERED BULLNOSE CANOPY	
111 SPANDREL GLASS	
112 PAINT CONCRETE AND REVEAL - COLOR T.B.D.	

GENERAL NOTES

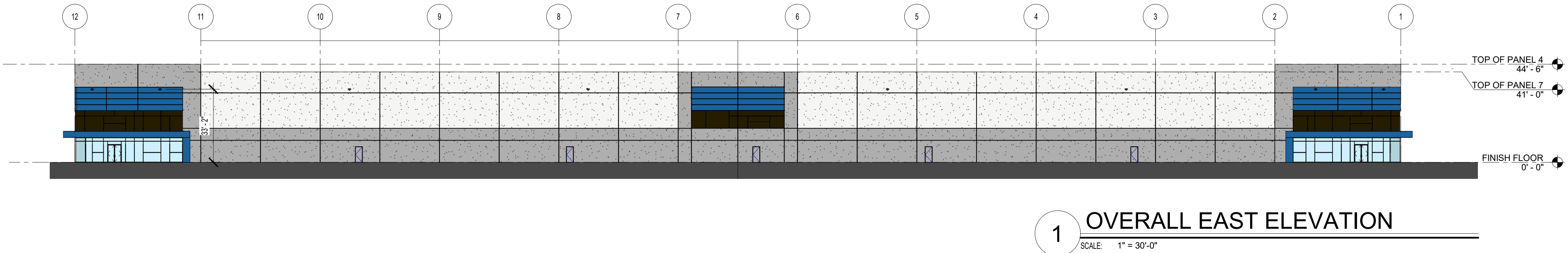
1. ALL GLASS TO BE TYPE "A" U.N.O. ALL GLASS IN DOORS TO BE TEMPERED.
2. ALL GLASS WITHIN 2' OF DOOR SWING TO BE TEMPERED.
3. KAWNEER TRI-FAB 451 BASIS OF DESIGN FOR STOREFRONT.
4. STOREFRONT SYSTEMS TO BE DESIGNED TO MEET ALL LOCAL AND DESIGN LOADS. SEE STRUCTURAL DRAWINGS FOR DESIGN LOAD REQUIREMENTS.
5. EXTERIOR WALL PACKS ARE INCLUDED - SEE ELECTRICAL DRAWINGS FOR LOCATIONS.

KEYNOTES

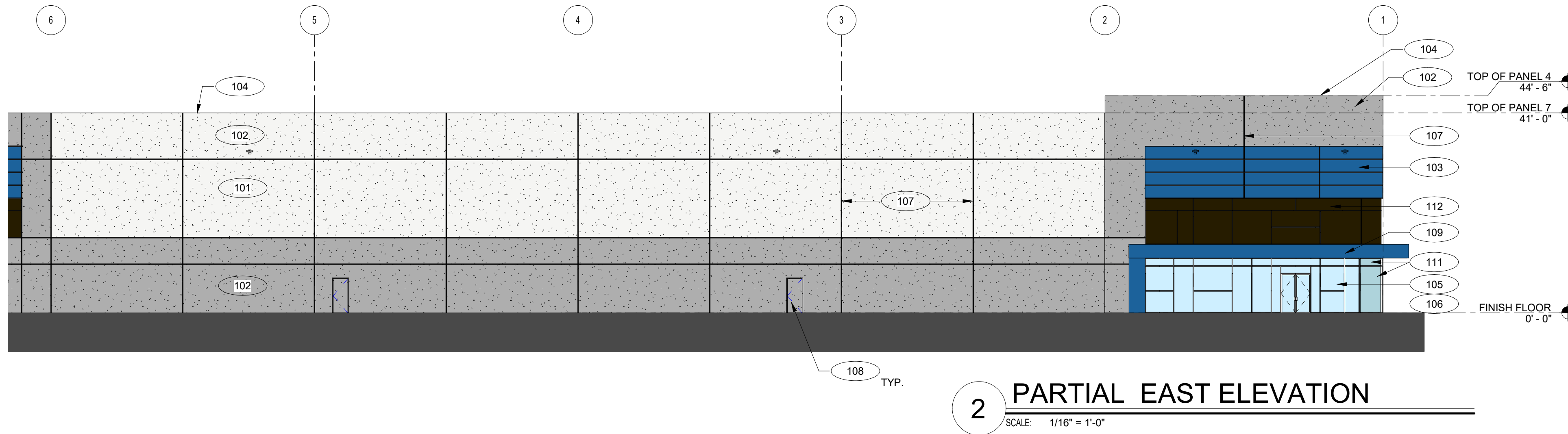
- E1 CONCRETE SERVICE RAMP, SEE 12/A.401
- E2 STAIR AND GUARDRAIL, TYP. SEE 6/A.401, 8/A.401, 10/A.401
- E3 DOCK BUMPER - SEE WALL SECTIONS
- E4 LOUVER - SEE MECHANICAL DRAWINGS
- E5 LED WALL PACK - SEE ELECTRICAL DRAWINGS
- E6 9' X 9' KNOCK-OUT FOR FUTURE LOUVERS
- E7 5' X 5' KNOCK-OUT FOR FUTURE CLERESTORY WINDOWS
- E8 CONCRETE STAIR AND PLATFORM, SEE 12/A.401
- E9 EXHAUST FAN AND LOUVER, FOR SIZE AND LOCATION COORDINATE WITH MECHANICAL
- E10 DOUBLE DOWNSPOUTS AT WARPED SIDE



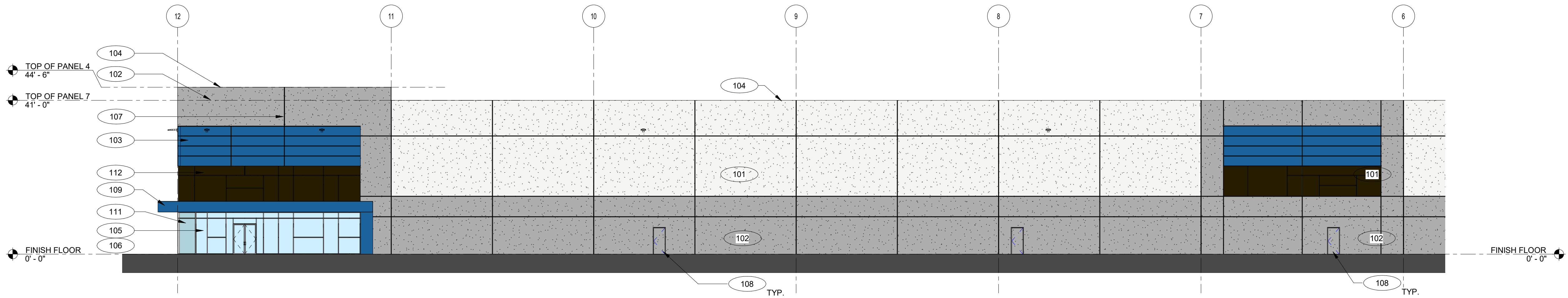
5 ENLARGED EAST ELEVATION



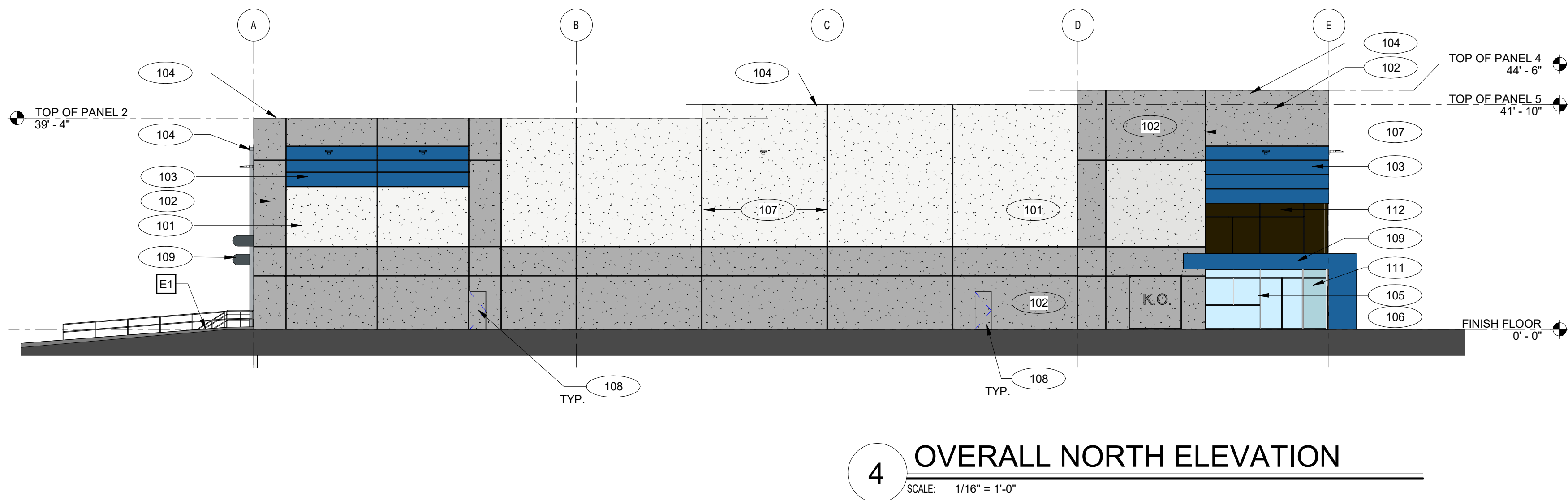
1 OVERALL EAST ELEVATION



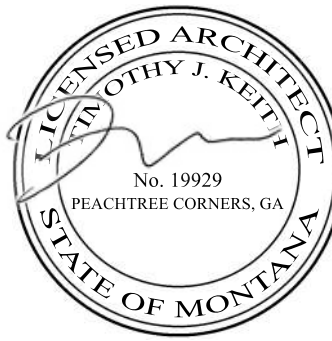
2 PARTIAL EAST ELEVATION



3 PARTIAL EAST ELEVATION



4 OVERALL NORTH ELEVATION



SOUTH FRONTAGE
DISTRIBUTION CENTER

BUILDING 100

BILLINGS, MONTANA

©2020, Atlas Collaborative LLC. These drawings are protected by the copyright laws of the United States. These drawings or any part thereof may not be used for any purpose or reproduced in any form or by any means without the written consent of Atlas Collaborative, LLC.

Print Record

28 February 2022 ISSUED FOR PERMIT

Revisions

Issue Date

03/28/2022

Sheet Title

EXTERIOR ELEVATIONS

Sheet No.

A.202

ISSUED FOR CONSTRUCTION