

Office space for lease with generous TI's

# Plaza de Campaña office building

3227 - 3317 E Bell Road | Phoenix, AZ



**Drew Sampson**  
D 480 423 7943  
C 602 820 3877  
[drew.sampson@avisonyoung.com](mailto:drew.sampson@avisonyoung.com)



**AVISON  
YOUNG**

# Property overview

**Office space with generous TI's**  
3227 - 3317 E Bell Road

Plaza de Campaña is a mixed-use retail and office project serving the local north Phoenix trade areas. The project is located in a high-population/high-traffic area with frontage on Bell Road (over 59,000 cpd).



Large parking field with multiple points of access



Monument signage available



Easy access to SR-51 and Loop-101 Freeways

## Offering Summary

Year built	1986
Building size	67,077 sf
Availability	21,017 sf (divisible to 4,000 sf)
Lease rate	\$22.00 sf, FS
Parking	8:1,000 sf (175 spaces)
Zoning	C-2, Phoenix



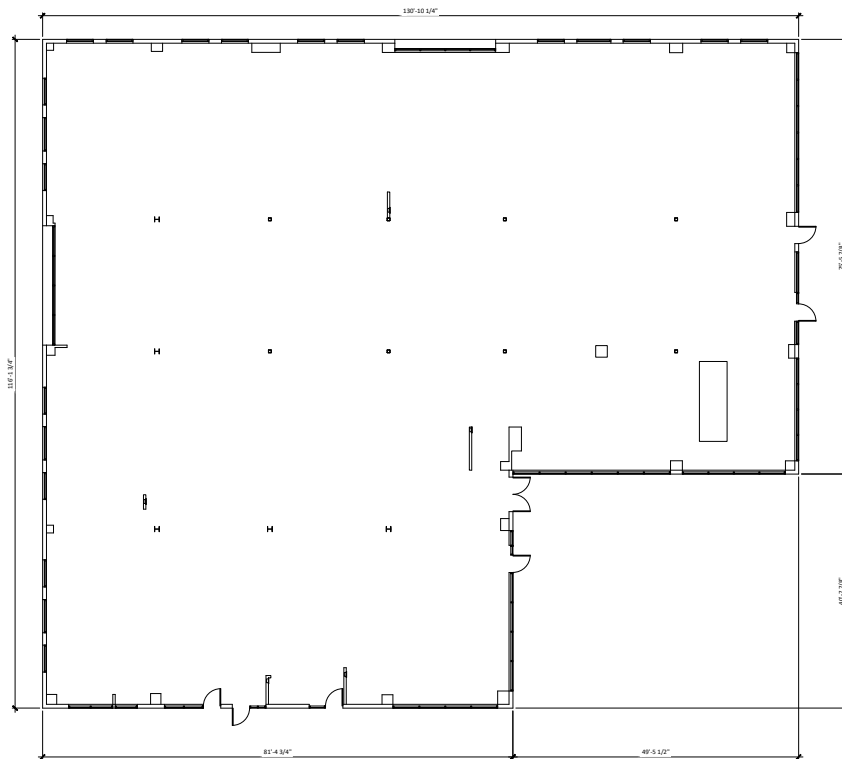
# Floor plans

Office space with generous TI's  
3227 - 3317 E Bell Road

## Suite D201

13,186 sf

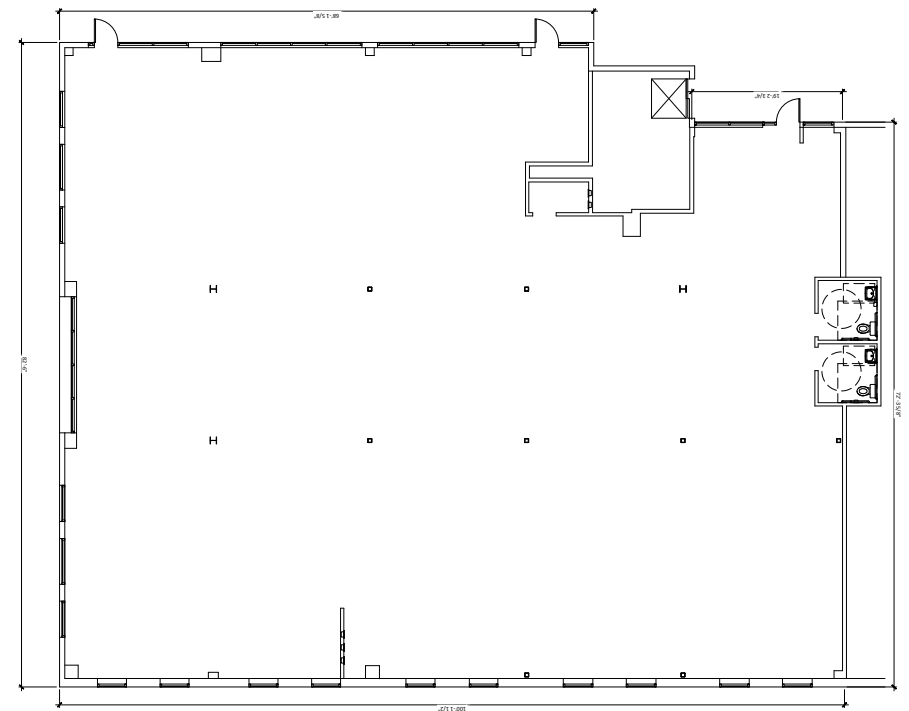
(Divisible to 4,000 sf)



## Suite D260

7,831 sf

(Divisible to 4,000 sf)



**Generous TI's for  
a turnkey buildout**



# Trade area

Office space with generous TI's  
3227 - 3317 E Bell Road





# For more information

**Drew Sampson**  
D 480 423 7943  
C 602 820 3877  
[drew.sampson@avisonyoung.com](mailto:drew.sampson@avisonyoung.com)



**Visit us online**  
[avisonyoung.com](http://avisonyoung.com)

© 2022 Avison Young - Arizona, Ltd. All rights reserved.

E. & O.E.: The information contained herein was obtained from sources which we deem reliable and, while thought to be correct, is not guaranteed by Avison Young.

2720 E Camelback Road | Suite 150 | Phoenix, AZ 85016 | 480 994 8155



**AVISON  
YOUNG**