

MIDTOWN  
PROFESSIONAL  
BUILDING



**LEASE**

# Midtown Professional Building

**14 W JORDAN STREET, SUITE 130**

Pensacola, FL 32503

**PRESENTED BY:**

**MICHAEL CARRO, CCIM**

O: 850.434.7500

mcarro@svn.com

FL #BK3179263

**ANNA GRIFFIN**

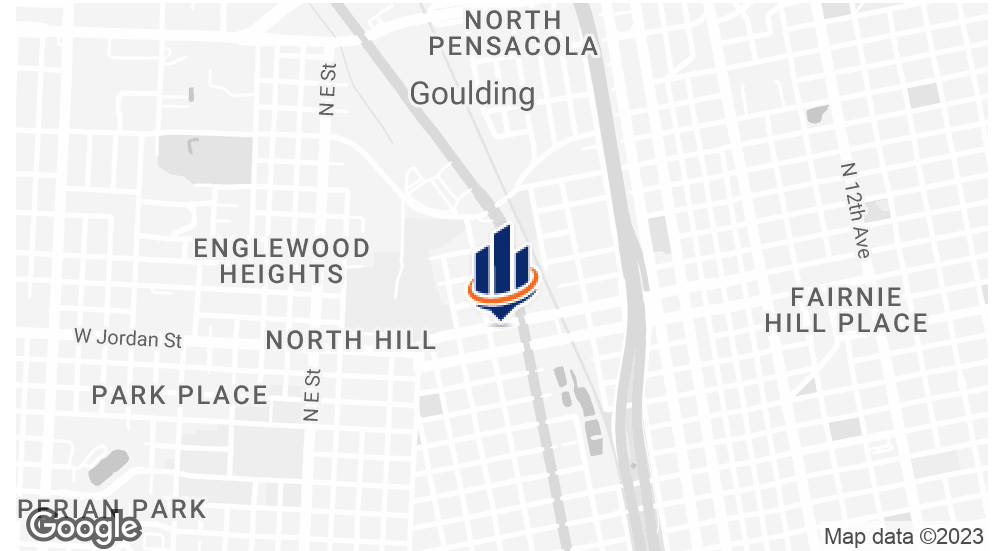
O: 850.434.7500 x112

anna.griffin@svn.com

FL #SL3582498



## PROPERTY SUMMARY



## OFFERING SUMMARY

LEASE RATE:	\$15.30/SF + NNN
AVAILABLE SF:	1,000
LOT SIZE:	1.706 Acres
MARKET:	Downtown
APN:	000S009010001124
VIRTUAL TOUR:	<a href="#">View Here</a>

**MICHAEL CARRO, CCIM**  
O: 850.434.7500  
mcarro@svn.com  
FL #BK3179263

**ANNA GRIFFIN**  
O: 850.434.7500 x112  
anna.griffin@svn.com  
FL #SL3582498

## PROPERTY OVERVIEW

Midtown Professional Building is a multi-tenant building home to a diverse community of Professionals.

Currently being utilized as a medical space, the 1,000 +/- SF can be divided for a variety of users or be suitable for one business.

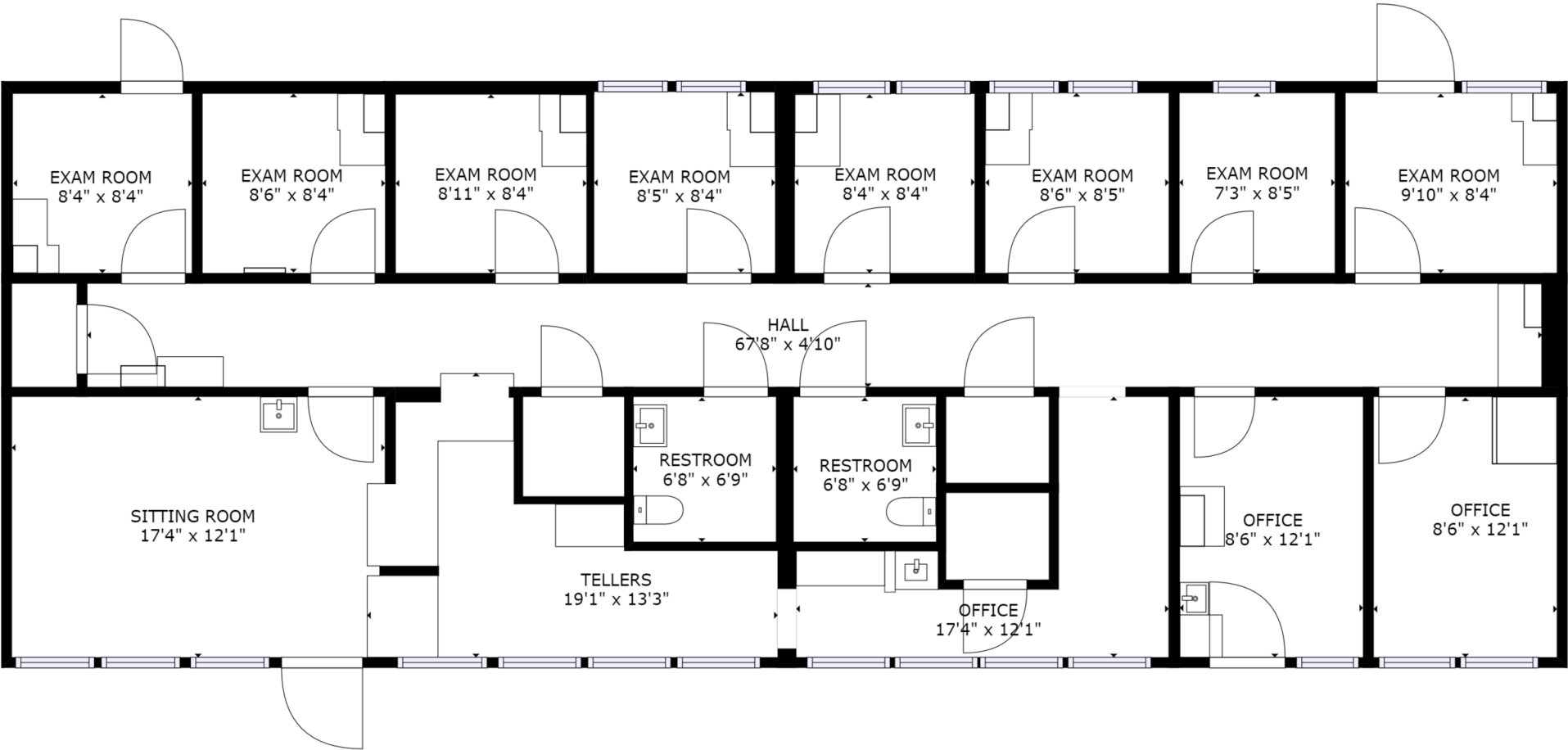
With easy access to I-10 and the Downtown core, this property is ideally located, allowing you to serve downtown and the greater Pensacola.

\* Internet, Parking, Utilities and more INCLUDED in rent amount.\*

## PROPERTY HIGHLIGHTS

- Large Open Area for Reception or Conference
- 12 Offices / Exam Rooms
- 2 Restrooms
- Downtown Pensacola - 1 Mile North of Cervantes

FLOOR PLAN



**MICHAEL CARRO, CCIM**  
O: 850.434.7500  
mcarro@svn.com  
FL #BK3179263

**ANNA GRIFFIN**  
O: 850.434.7500 x112  
anna.griffin@svn.com  
FL #SL3582498

## PARKING MAP



**MICHAEL CARRO, CCIM**

O: 850.434.7500

mcarro@svn.com

FL #BK3179263

**ANNA GRIFFIN**

O: 850.434.7500 x112

anna.griffin@svn.com

FL #SL3582498







# DEMOGRAPHICS MAP & REPORT

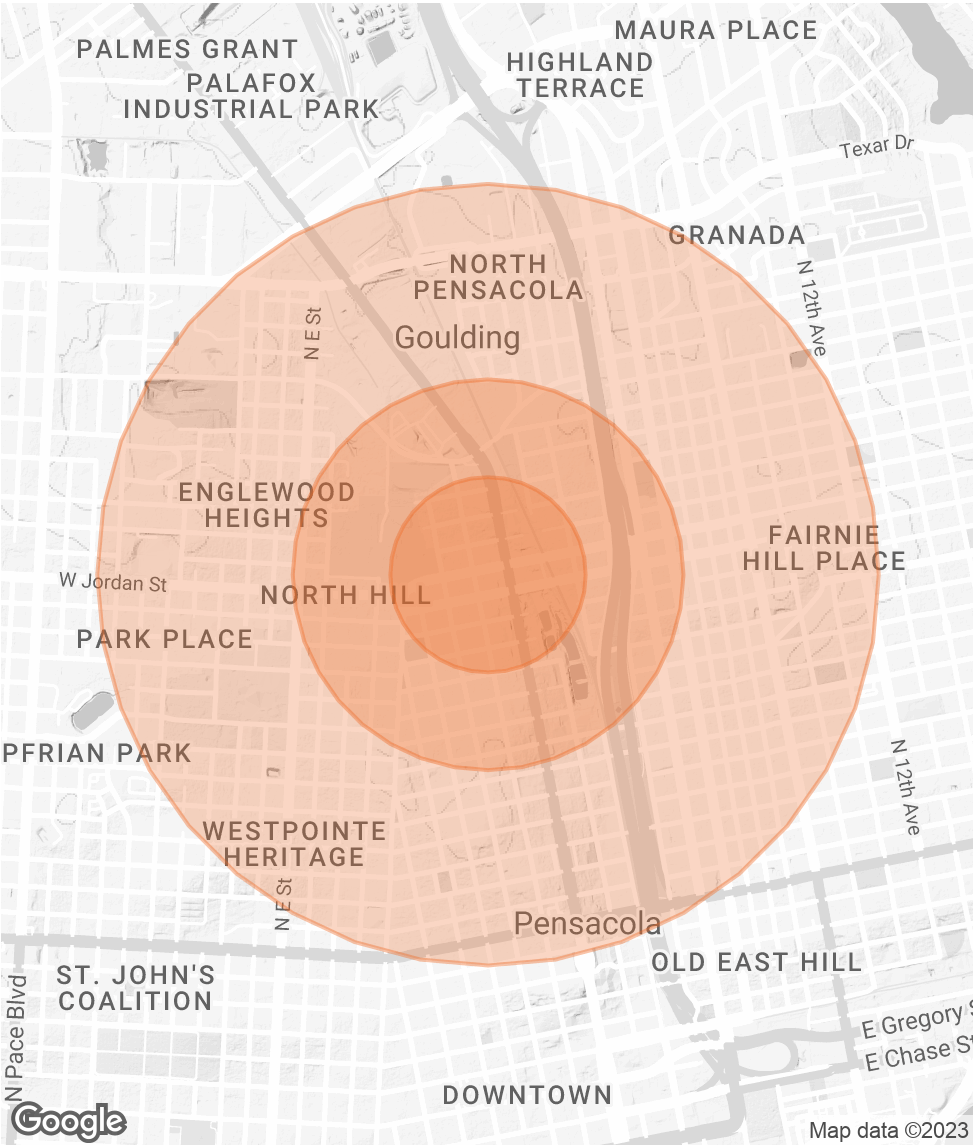
## POPULATION

	0.25 MILES	0.5 MILES	1 MILE
TOTAL POPULATION	548	2,123	8,189
AVERAGE AGE	39.7	40.4	37.8
AVERAGE AGE (MALE)	35.8	36.9	34.6
AVERAGE AGE (FEMALE)	43.3	44.2	42.6

## HOUSEHOLDS & INCOME

	0.25 MILES	0.5 MILES	1 MILE
TOTAL HOUSEHOLDS	247	980	3,739
# OF PERSONS PER HH	2.2	2.2	2.2
AVERAGE HH INCOME	\$60,934	\$52,031	\$48,661
AVERAGE HOUSE VALUE	\$565,746	\$328,086	\$258,041

\* Demographic data derived from 2020 ACS - US Census



**MICHAEL CARRO, CCIM**  
O: 850.434.7500  
mcarro@svn.com  
FL #BK3179263

**ANNA GRIFFIN**  
O: 850.434.7500 x112  
anna.griffin@svn.com  
FL #SL3582498



ADVISOR BIO



MICHAEL CARRO, CCIM

Senior Advisor, Principal

mcarro@svn.com  
Direct: 850.434.7500 | Cell: 850.380.3344

FL #BK3179263 // AL #000093777

PROFESSIONAL BACKGROUND

Michael Carro is a CCIM and Commercial Broker Licensed in Florida and Alabama. He is a Principal at SVN | SouthLand Commercial Real Estate with offices in Pensacola, Panama City and Tallahassee. Before starting SVN | SouthLand Commercial, he was the 2009, 2010, 2011 & 2012 Top Producer for NAI Halford. He received the NAIOP 2010 “Broker Deal of the Year” Award and the NAIOP “New Development of the Year” in 2014. He has been Top Producer for SVN | SouthLand Commercial in 2014-2020. In 2016, he was the #1 Top Producer in the State of Florida, and the #3 Top Producer in the USA for SVN. He was also the recipient of the NAIOP Broker Deal of the Year Award in 2016.

2016 #1 Top Producer in the State of Florida for SVN  
2016 #3 Top Producer in the USA for SVN  
2016 NAIOP Broker Deal of the Year Award Winner

Restaurant Background  
•Founded The Restaurant Realty Network and TheRestaurantRealty.com  
•Hosts “The Restaurant Realty Show” weekly on News Radio 1620.  
•In 1999 and 2000 oversaw the acquisition of 120 Hardee’s Restaurant locations in Springfield, IL; Biloxi, MS; Pensacola, FL; Huntsville, Montgomery and Mobile, AL  
•Was a member of the International Hardee’s Franchise Association (IHFA) and on the purchasing committee 2002-2006

EDUCATION

- Graduated from the University of Arizona with a BS in Business Administration
- Member of the Alpha Tau Omega fraternity
- Cheerleader for the University of Arizona from 1987 to 1990.

SVN | SouthLand Commercial  
186 N. Palafox Street  
Pensacola, FL 32502  
850.434.7500

<b>MICHAEL CARRO, CCIM</b>	<b>ANNA GRIFFIN</b>
O: 850.434.7500	O: 850.434.7500 x112
mcarro@svn.com	anna.griffin@svn.com
FL #BK3179263	FL #SL3582498



ADVISOR BIO



ANNA GRIFFIN

Assistant Advisor

anna.griffin@svn.com  
Direct: 850.434.7500 x112 | Cell: 850.586.0833

FL #SL3582498

PROFESSIONAL BACKGROUND

Anna Griffin joined SVN Southland Commercial in 2023 as an Associate Advisor. Earning her Bachelor’s degree in Communication and Digital Media Studies at Florida State University, Anna’s passion lies in revitalizing the community and driving economic development. As a Pensacola native, she is committed to building robust relationships that contribute to a stronger community, making her a valuable addition to the SVN family. Combining her local insights with knowledge of the commercial real estate industry, Anna strives to create a positive impact on her clients and the community.

SVN | SouthLand Commercial  
186 N. Palafox Street  
Pensacola, FL 32502  
850.434.7500

<b>MICHAEL CARRO, CCIM</b>	<b>ANNA GRIFFIN</b>
O: 850.434.7500	O: 850.434.7500 x112
mcarro@svn.com	anna.griffin@svn.com
FL #BK3179263	FL #SL3582498