



LAND FOR SALE

Vacant Industrial Land +/- 0.46 Acres

665 S Industry Road Cocoa, FL 32926

FOR SALE | \$300,000

presented by:

BRIAN L. LIGHTLE, CCIM, SIOR, CRE

Founder | Broker Associate

321.863.3228

brian@teamlbr.com

EXECUTIVE SUMMARY

M2 Zoned Industrial Land - 665 S Industry Road, Cocoa • 665 S Industry Road Cocoa, FL 32926



OFFERING SUMMARY

Sale Price: \$300,000

PROPERTY OVERVIEW

Fully Fenced Cleared Lot
All Utilities Plumbed to Site
M2 Zoning, City of Cocoa
Contractor Storage Yard
Parking Lot
Distribution , Warehousing, Manufacturing

Lot Size: 0.46 Acres

LOCATION OVERVIEW

Zoning: M2

Located Near Grissom Parkway and Industry Road - Industrial Hub in Cocoa
Immediate Proximity to Beachline Expressway
+/- 37 Miles to Orlando International Airport
+/- 30 Miles to Melbourne International Airport
+/- 10 Miles to Port Canaveral
Directly Across from Tropic Oil on Industry Road

APN#: 24-36-07-00-520

BRIAN L. LIGHTLE, CCIM, SIOR, CRE

Founder | Broker Associate
321.863.3228
brian@teamlbr.com

Lightle Beckner Robison, Inc.

321.722.0707 • teamlbr.com
70 W. Hibiscus Blvd.,
Melbourne, FL 32901

Information contained herein has been obtained through sources deemed reliable but cannot be guaranteed as to its accuracy. A purchaser or lessee is expected to verify all information to his/her own satisfaction. Zoning information subject to change and not warranted. Always confirm current requirements with local governing agencies.

ADDITIONAL PHOTOS

M2 Zoned Industrial Land - 665 S Industry Road, Cocoa • 665 S Industry Road Cocoa, FL 32926



BRIAN L. LIGHTLE, CCIM, SIOR, CRE

Founder | Broker Associate
321.863.3228
brian@teamlbr.com

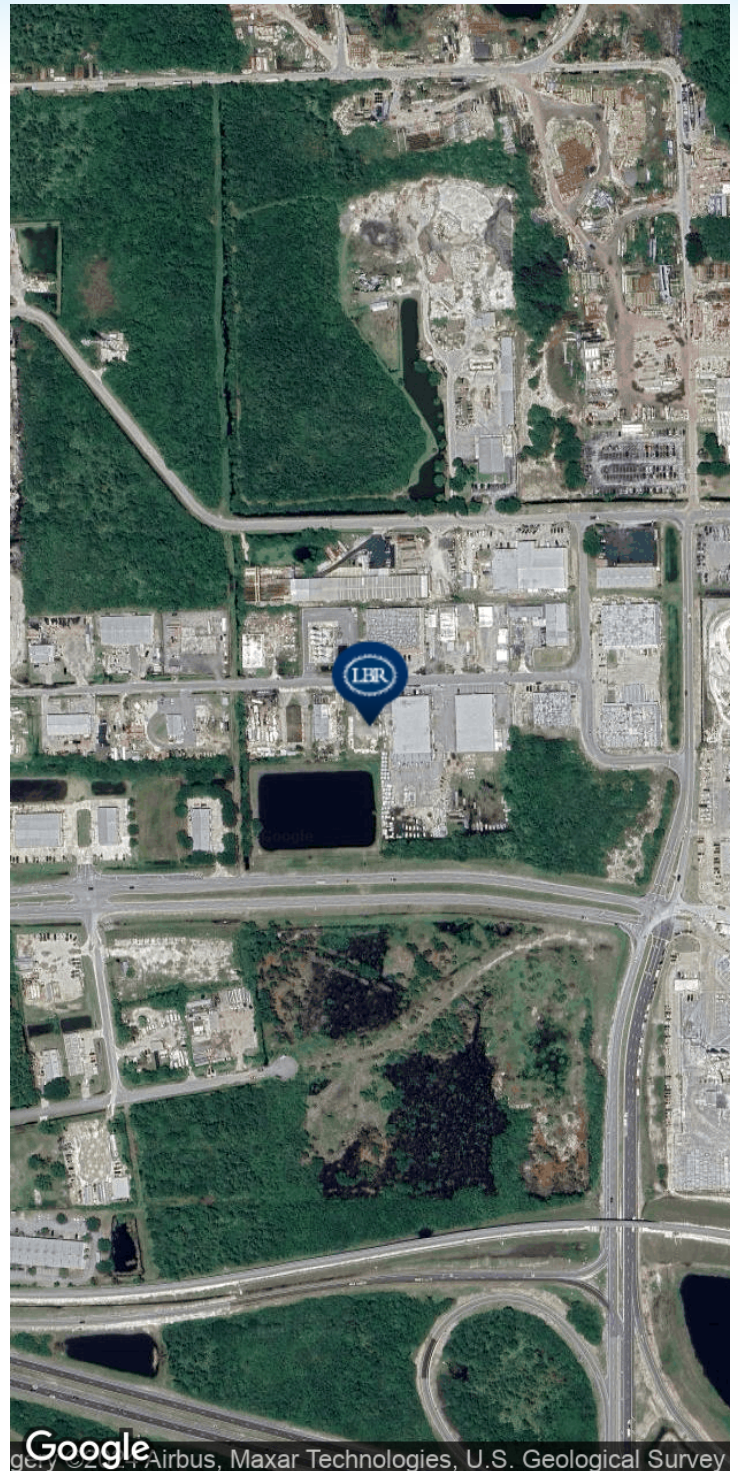
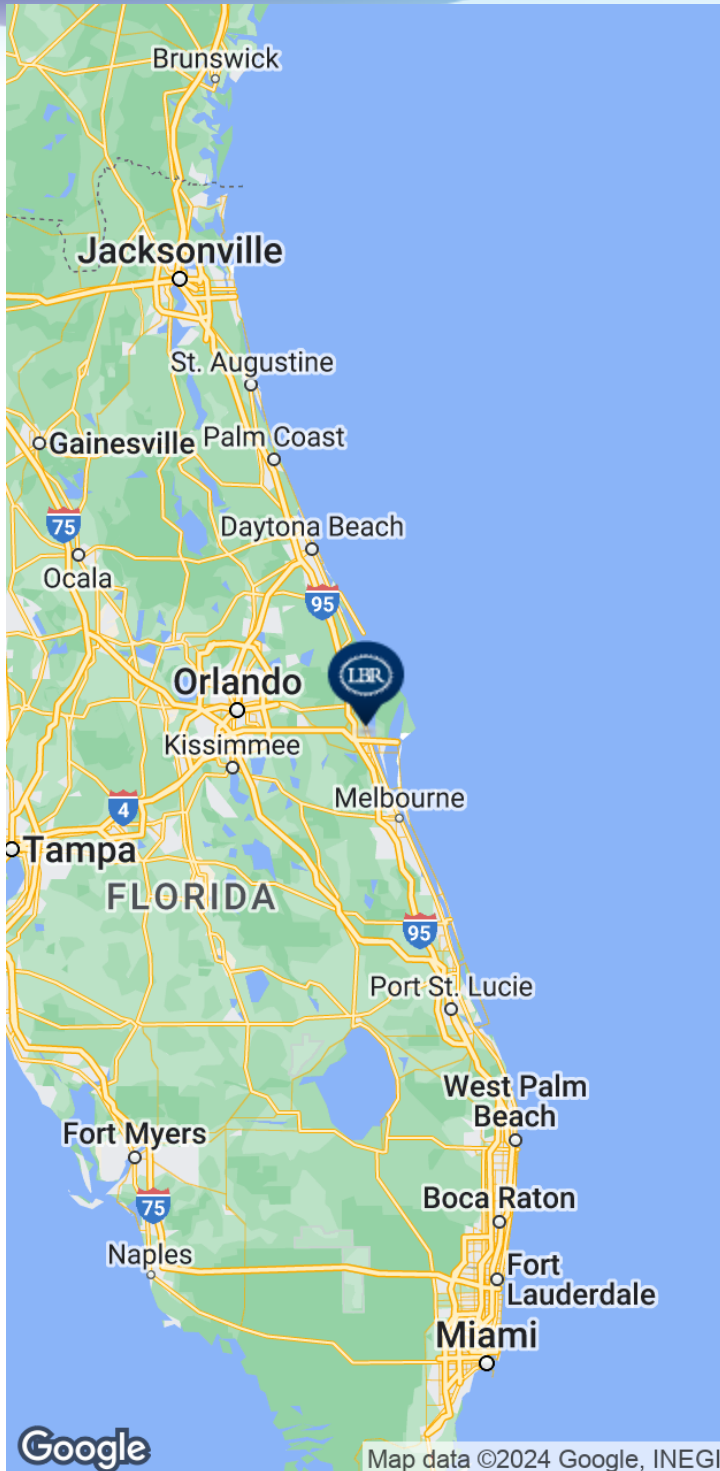
Information contained herein has been obtained through sources deemed reliable but cannot be guaranteed as to its accuracy. A purchaser or lessee is expected to verify all information to his/her own satisfaction. Zoning information subject to change and not warranted. Always confirm current requirements with local governing agencies.

Lightle Beckner Robison, Inc.

321.722.0707 • teamlbr.com
70 W. Hibiscus Blvd.,
Melbourne, FL 32901

LOCATION MAP

M2 Zoned Industrial Land - 665 S Industry Road, Cocoa • 665 S Industry Road Cocoa, FL 32926



BRIAN L. LIGHTLE, CCIM, SIOR, CRE

Founder | Broker Associate
321.863.3228
brian@teamlbr.com

Information contained herein has been obtained through sources deemed reliable but cannot be guaranteed as to its accuracy. A purchaser or lessee is expected to verify all information to his/her own satisfaction. Zoning information subject to change and not warranted. Always confirm current requirements with local governing agencies.

Lightle Beckner Robison, Inc.

321.722.0707 • teamlbr.com
70 W. Hibiscus Blvd.,
Melbourne, FL 32901