



22nd & Lewis

2202 Lewis Avenue | Billings, Montana 59102

Property Highlights

- 6 Units
- Covered parking
- 2 Laundry Rooms
- New windows in 2018
- New roofs in 2016 & 2015

OFFERING SUMMARY

Sale Price:	\$1,200,000
Number of Units:	6
CAP Rate	6.55%
Lot Size:	12,965 SF
Building Size:	6,480 SF

Property Description

Two building 6-plex in a highly desirable neighborhood just two blocks off 24th Street. Well maintained mix of 2 and 3 bed units. 4 of the 6 units have been remodeled/updated in the last few years. A laundry room for each building is provided to tenants with coin-operated washer and dryer. Owner pays gas and water. Tenant pays electric.

Sale Price: \$1,200,000





Matt Robertson, SIOR
 Broker/Principal | 406.294.6308
 mrobertson@naibusinessproperties.com

Haley Vannatta, CCIM
 Broker | 406.294.6317
 hvannatta@naibusinessproperties.com | MT #62446





UNIT TYPE	BEDS	BATHS	COUNT
Downstairs	3	2	2
Upstairs	2	1	4
TOTALS/AVERAGES			6





FOR SALE

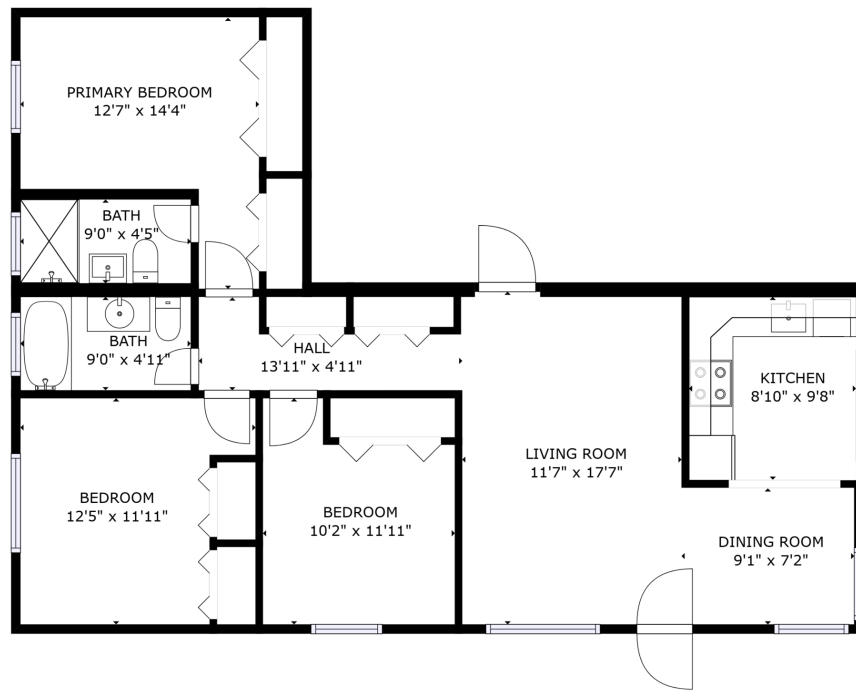


MULTIFAMILY

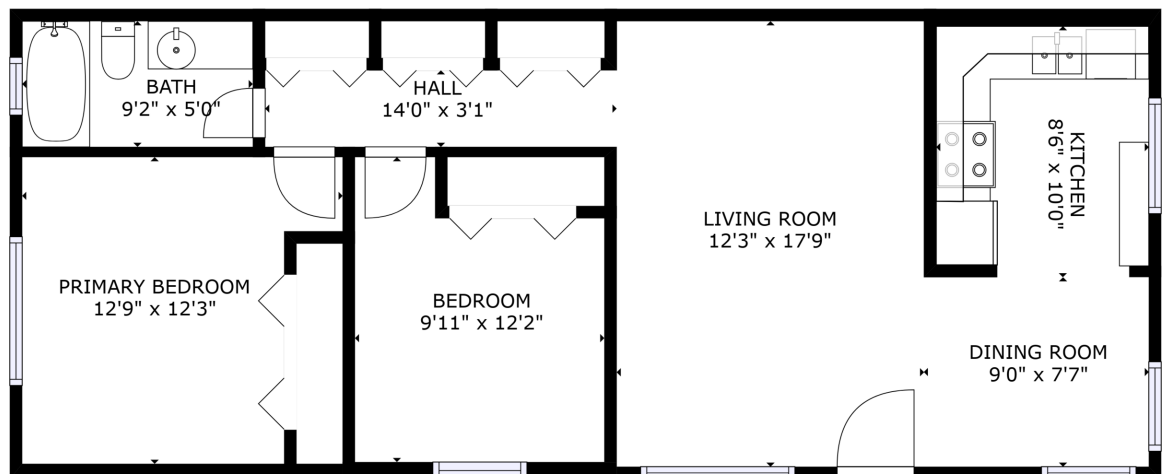


6,480

360° VIRTUAL TOUR



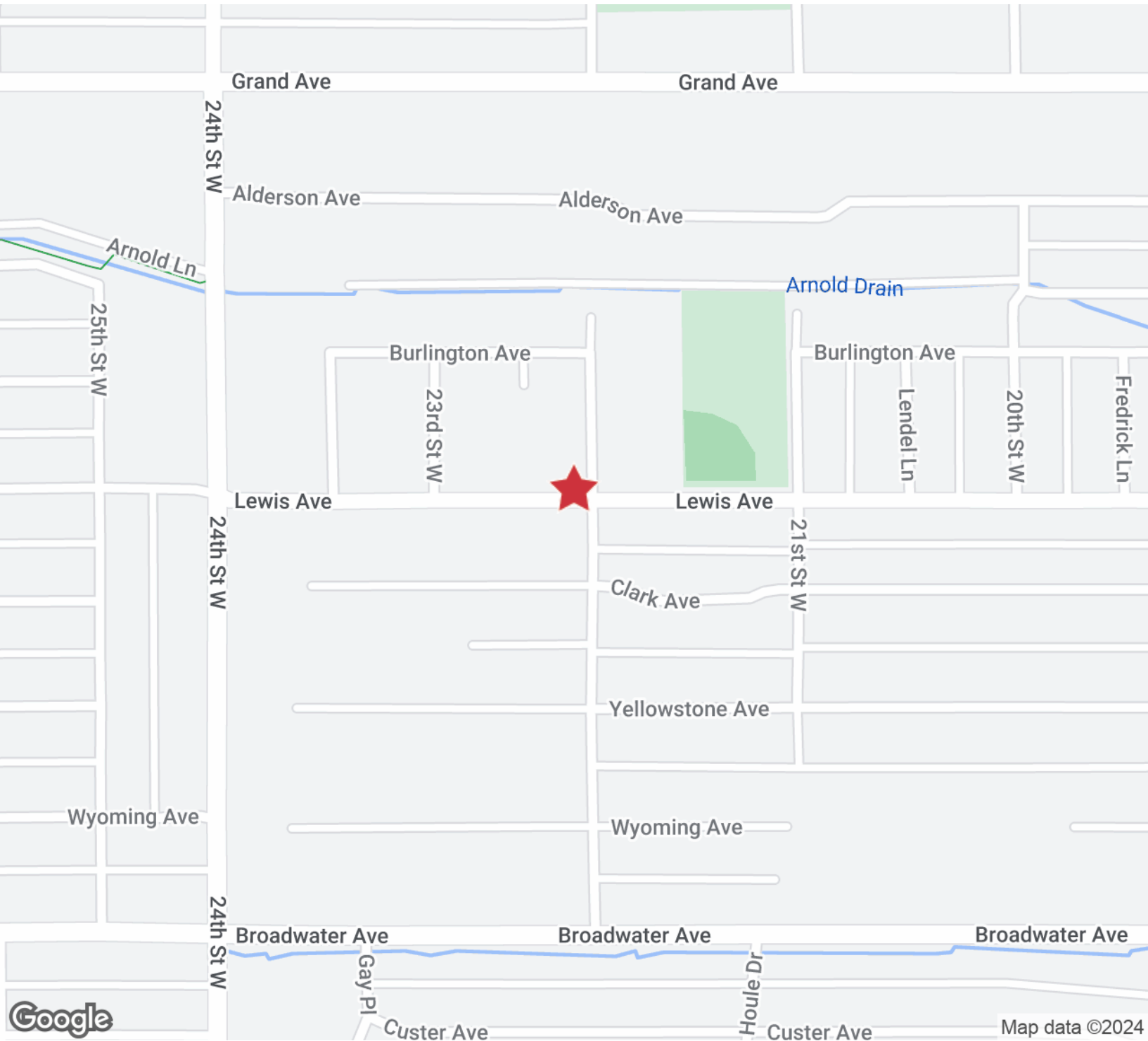
360° VIRTUAL TOUR



Matt Robertson, SIOR
Broker/Principal | 406.294.6308
mrobertson@naibusinessproperties.com

Haley Vannatta, CCIM
Broker | 406.294.6317
hvannatta@naibusinessproperties.com | MT #62446





Matt Robertson, SIOR
 Broker/Principal | 406.294.6308
 mrobertson@naibusinessproperties.com

Haley Vannatta, CCIM
 Broker | 406.294.6317
 hvannatta@naibusinessproperties.com | MT #62446

