

# FOR LEASE

EAST LA CIVIC CENTER PLAZA

131-251 S MEDNIK AVE | LOS ANGELES, CA 90022



**AARON GUIDO**

CALDRE #01924252

714.769.6117

AARON@CBM1.COM

**DANIEL BARRIGA**

CALDRE #02031360

949.608.4886

DANIEL@CBM1.COM

**CBM1.COM**

**CBM1**

LEASING

BROKERAGE

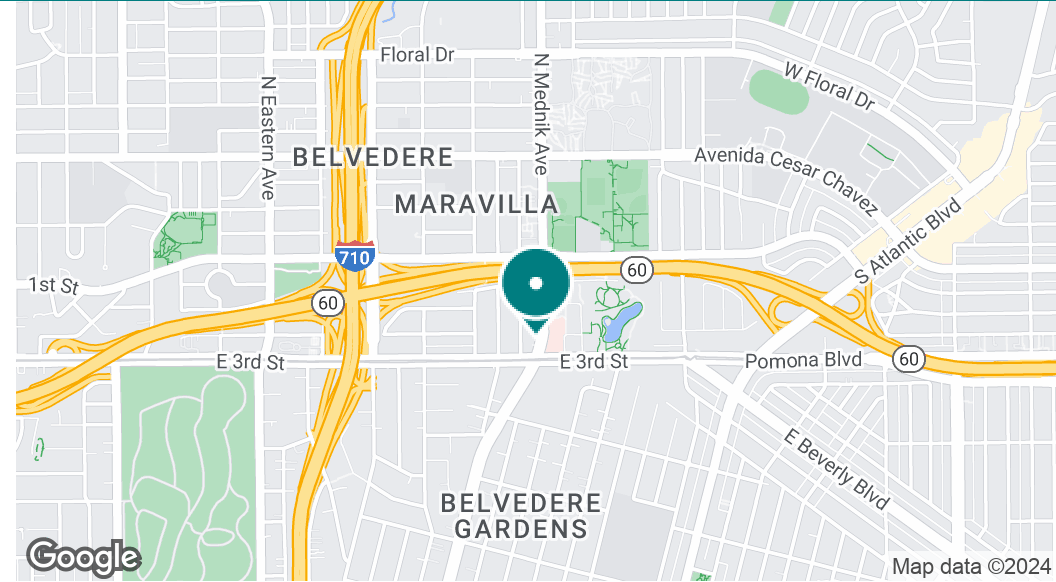
INVESTMENTS



## EXECUTIVE SUMMARY

EAST LA CIVIC CENTER PLAZA | 131-251 S MEDNIK AVE, LOS ANGELES, CA 90022

BROCHURE | PAGE 2



### OFFERING SUMMARY

Lease Rate:	\$2.50 SF/month (NNN)
Building Size:	4,294 SF
Available SF:	700 - 883 SF
Lot Size:	58,722 SF
Zoning:	LCM1*
Market:	Los Angeles
Submarket:	Southeast Los Angeles
Traffic Count:	17,052

### PROPERTY OVERVIEW

Join The Coffee Bean & Tea Leaf and other thriving businesses. Ample parking along with a newly renovated interior and tremendous monument signage visible from the signalized intersection of 3rd & Mednik. Directly across the street from East LA Civic Center, Courthouse, Library, Park, and Sheriff's Department.

### PROPERTY HIGHLIGHTS

- EXCELLENT PARKING
- UNITS ARE EASILY VISIBLE FROM STREET AND INTERSECTION
- MULTIPLE POINTS OF INGRESS/EGRESS
- MONUMENT SIGNAGE AVAILABLE
- NEXT TO BUS LINE & METRO
- ACROSS STREET FROM COURT HOUSE, POLICE STATION, LIBRARY, AND BELVEDERE PARK

**AARON GUIDO**  
CALDRE #01924252  
714.769.6117  
AARON@CBM1.COM

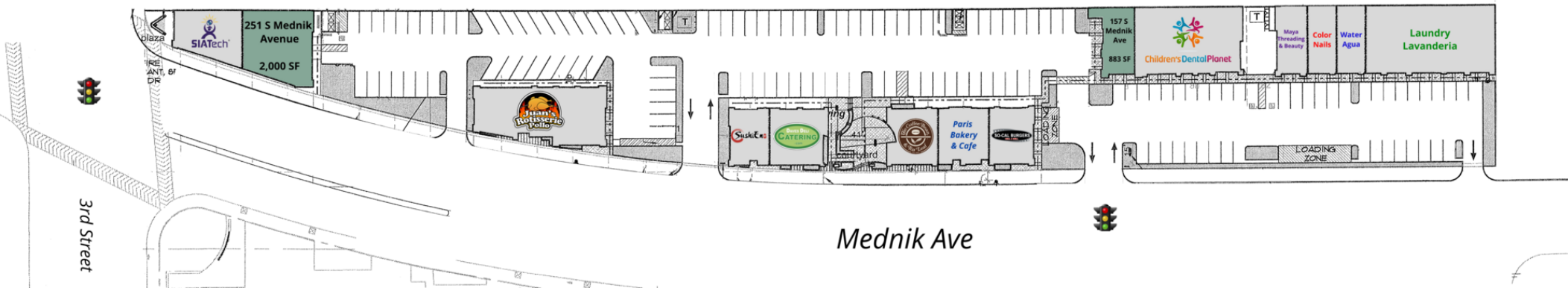
**DANIEL BARRIGA**  
CALDRE #02031360  
949.608.4886  
DANIEL@CBM1.COM

## LEASE SPACES

EAST LA CIVIC CENTER PLAZA | 131-251 S MEDNIK AVE, LOS ANGELES, CA 90022

BROCHURE | PAGE 3

(Not to Scale)



## LEASE INFORMATION

Lease Type:	NNN	Lease Term:	Negotiable
Total Space:	700 - 883 SF	Lease Rate:	\$2.50 SF/month

## AVAILABLE SPACES

SUITE	TENANT	SIZE	TYPE	RATE	DESCRIPTION	VIDEO
251 S Mednik Ave	-	2,000 SF	NNN	\$2.20 SF/month	Office/Retail/Medical	<a href="#">View Here</a>
157 S Mednik Ave	Available	883 SF	NNN	\$2.50 SF/month	End Cap Shop Space with ATM	<a href="#">View Here</a>

## AARON GUIDO

CALDRE #01924252

714.769.6117

AARON@CBM1.COM

## DANIEL BARRIGA

CALDRE #02031360

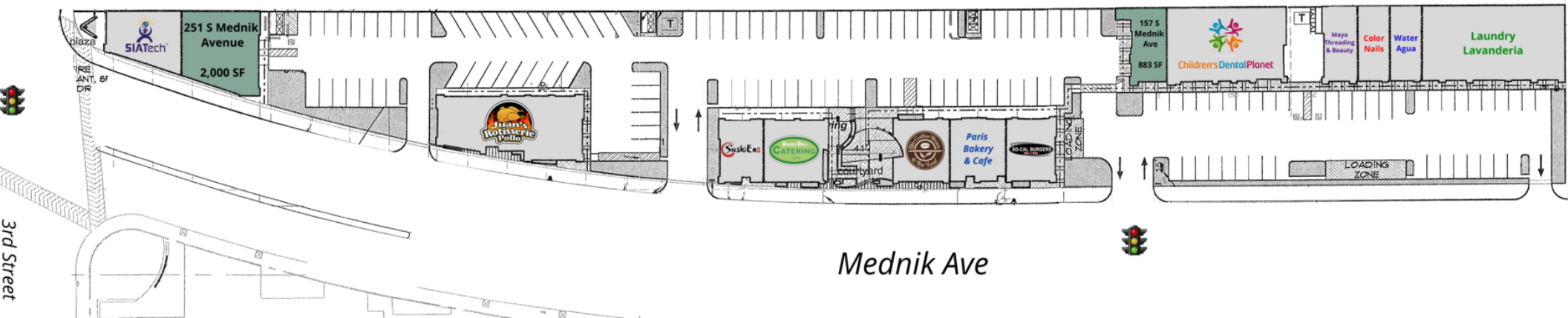
949.608.4886

DANIEL@CBM1.COM

## SITE PLAN

EAST LA CIVIC CENTER PLAZA | 131-251 S MEDNIK AVE, LOS ANGELES, CA 90022

BROCHURE | PAGE 4



**AARON GUIDO**

CALDRE #01924252

714.769.6117

AARON@CBM1.COM

**DANIEL BARRIGA**

CALDRE #02031360

949.608.4886

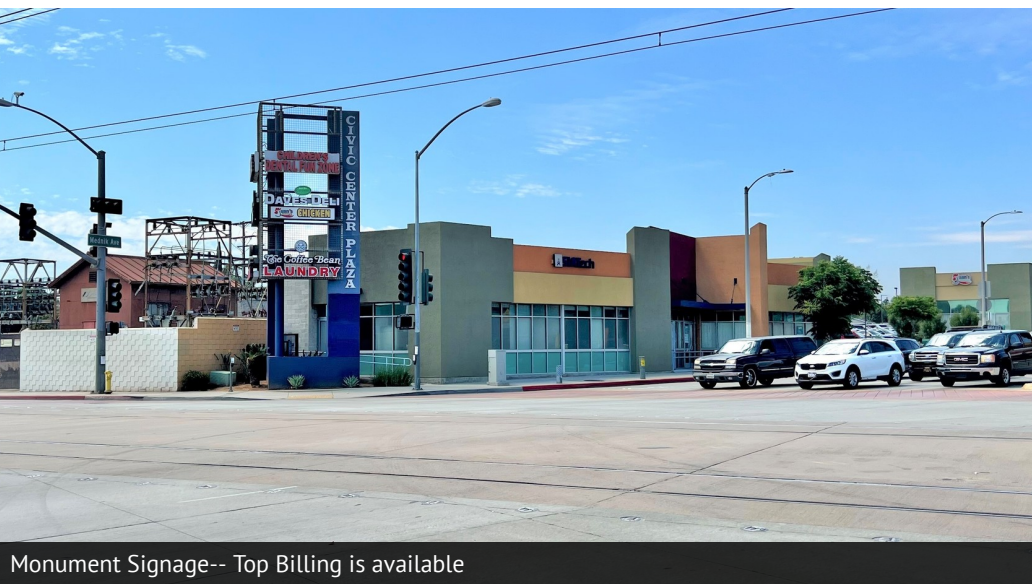
DANIEL@CBM1.COM



## ADDITIONAL PHOTOS

EAST LA CIVIC CENTER PLAZA | 131-251 S MEDNIK AVE, LOS ANGELES, CA 90022

BROCHURE | PAGE 5



**AARON GUIDO**  
CALDRE #01924252  
714.769.6117  
AARON@CBM1.COM

**DANIEL BARRIGA**  
CALDRE #02031360  
949.608.4886  
DANIEL@CBM1.COM



## SUITE 157 ADDITIONAL PHOTOS

EAST LA CIVIC CENTER PLAZA | 131-251 S MEDNIK AVE, LOS ANGELES, CA 90022

BROCHURE | PAGE 6



Frontage

**AARON GUIDO**  
CALDRE #01924252  
714.769.6117  
AARON@CBM1.COM

**DANIEL BARRIGA**  
CALDRE #02031360  
949.608.4886  
DANIEL@CBM1.COM



Interior



View from Intersection



## SUITE 251 ADDITIONAL PHOTOS

EAST LA CIVIC CENTER PLAZA | 131-251 S MEDNIK AVE, LOS ANGELES, CA 90022

BROCHURE | PAGE 7



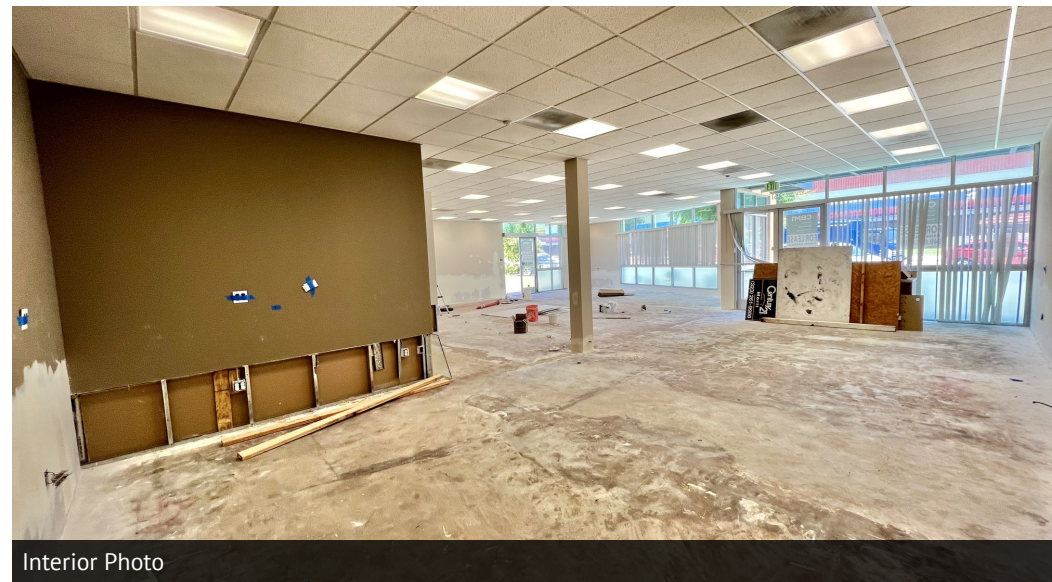
View from Intersection

**AARON GUIDO**  
CALDRE #01924252  
714.769.6117  
AARON@CBM1.COM

**DANIEL BARRIGA**  
CALDRE #02031360  
949.608.4886  
DANIEL@CBM1.COM



Excellent Parking

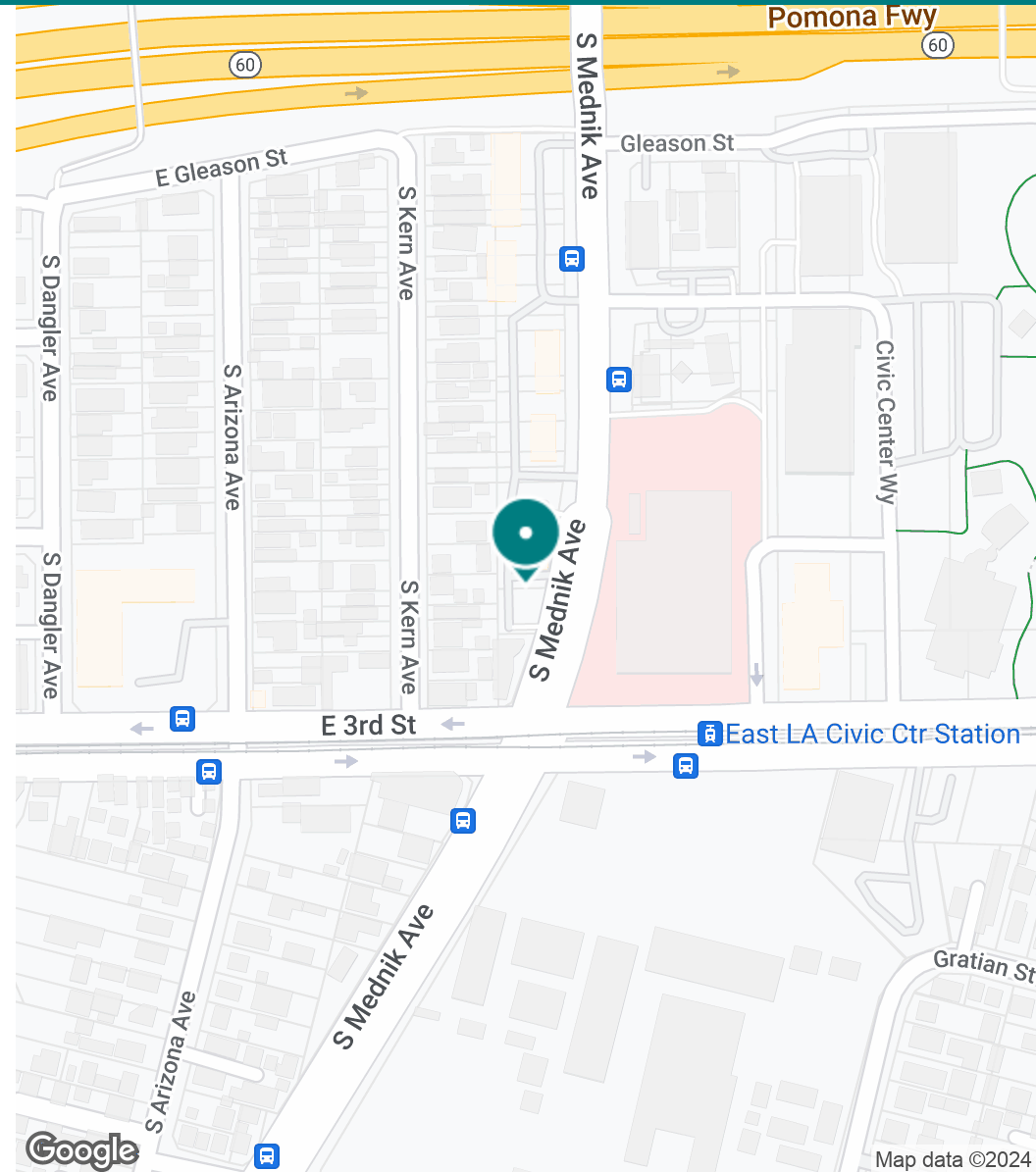
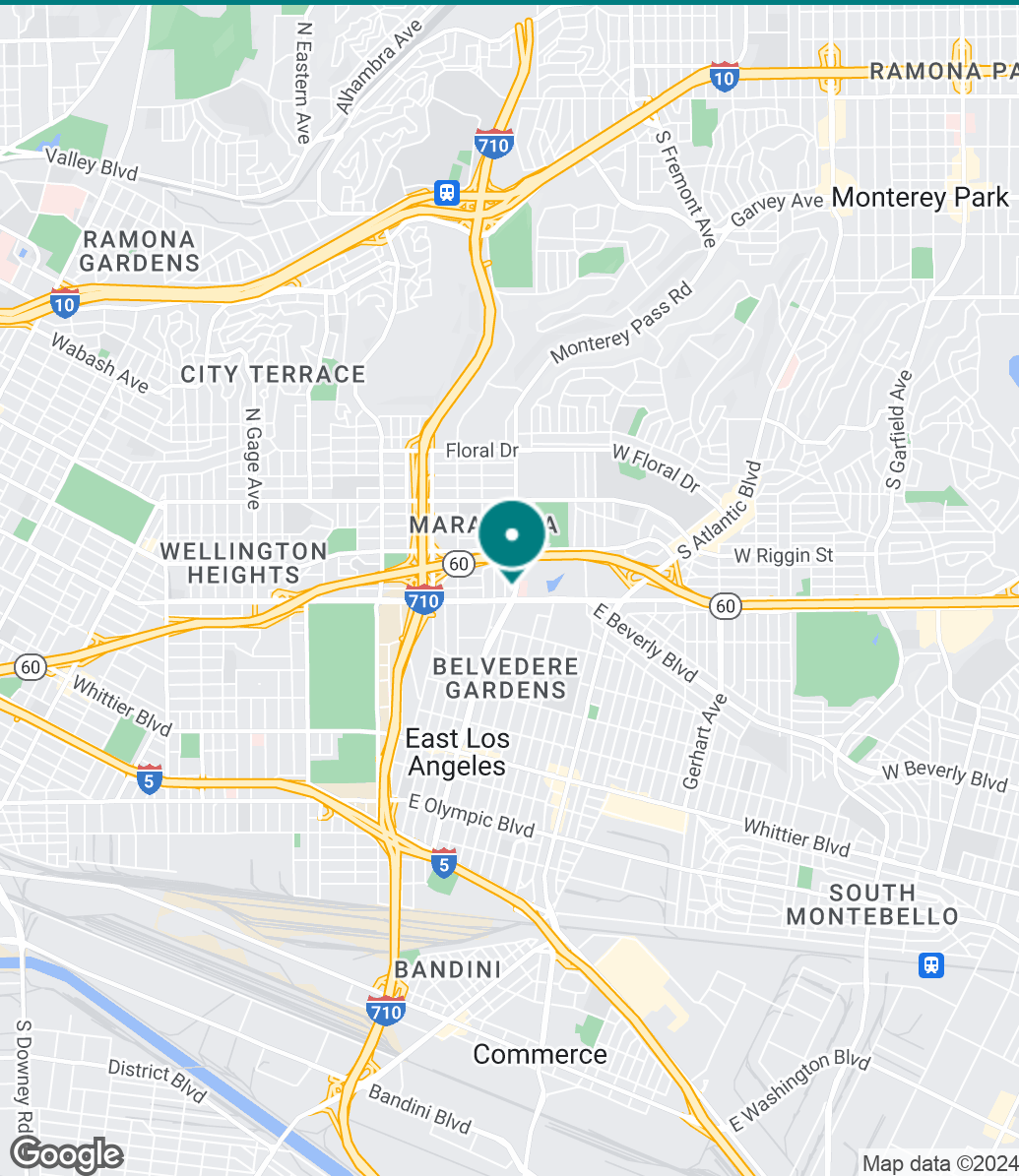


Interior Photo

## LOCATION MAP

EAST LA CIVIC CENTER PLAZA | 131-251 S MEDNIK AVE, LOS ANGELES, CA 90022

BROCHURE | PAGE 8



**AARON GUIDO**  
CALDRE #01924252  
714.769.6117  
AARON@CBM1.COM

**DANIEL BARRIGA**  
CALDRE #02031360  
949.608.4886  
DANIEL@CBM1.COM



# DEMOGRAPHICS MAP & REPORT

EAST LA CIVIC CENTER PLAZA | 131-251 S MEDNIK AVE, LOS ANGELES, CA 90022

BROCHURE | PAGE 9

POPULATION	1 MILE	3 MILES	5 MILES
Total Population	31,058	256,230	664,362
Average Age	32.4	34.9	36.2
Average Age (Male)	30.8	33.3	34.7
Average Age (Female)	33.6	36.5	37.7
HOUSEHOLDS & INCOME	1 MILE	3 MILES	5 MILES
Total Households	8,917	74,334	200,250
# of Persons per HH	3.5	3.4	3.3
Average HH Income	\$63,783	\$69,126	\$69,367
Average House Value	\$547,914	\$539,164	\$562,163
ETHNICITY (%)	1 MILE	3 MILES	5 MILES
Hispanic	88.4%	83.3%	71.3%
RACE	1 MILE	3 MILES	5 MILES
% White	37.3%	39.5%	37.5%
% Black	0.7%	0.9%	2.3%
% Asian	8.1%	11.9%	20.6%
% Hawaiian	0.1%	0.1%	0.1%
% American Indian	1.4%	1.0%	1.0%
% Other	43.9%	41.0%	32.6%

\* Demographic data derived from 2020 ACS - US Census

## AARON GUIDO

CALDRE #01924252

714.769.6117

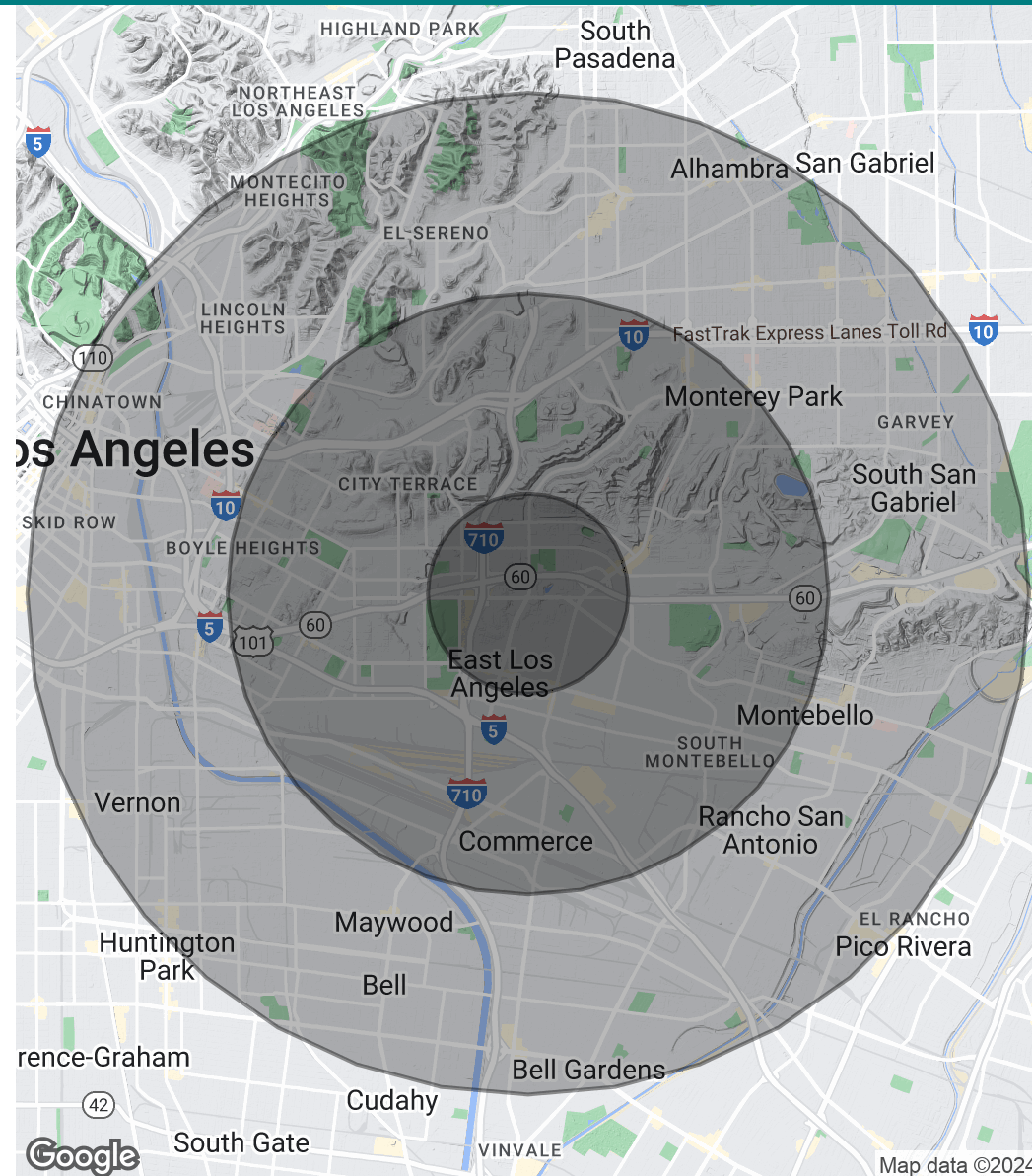
AARON@CBM1.COM

## DANIEL BARRIGA

CALDRE #02031360

949.608.4886

DANIEL@CBM1.COM



Map data ©2024

## MEET THE TEAM

EAST LA CIVIC CENTER PLAZA | 131-251 S MEDNIK AVE, LOS ANGELES, CA 90022

BROCHURE | PAGE 10



**AARON GUIDO**

Senior Vice President

**D:** 714.769.6117 | **C:** 714.335.9887

Aaron@cbm1.com

CaDRE #01924252



**DANIEL BARRIGA**

Vice President

**D:** 949.608.4886 | **C:** 714.394.5052

daniel@cbm1.com

CaDRE #02031360

**AARON GUIDO**

CALDRE #01924252

714.769.6117

AARON@CBM1.COM

**DANIEL BARRIGA**

CaDRE #02031360

949.608.4886

DANIEL@CBM1.COM