

# LAND FOR SALE

## Prime Development Opportunity

30801 UTICA RD  
ROSEVILLE, MI 48066



Fraser School District

Currently Zoned B-1 - Possible Rezoning

Many land uses / Development are possible



**P.A. COMMERCIAL**  
Corporate & Investment Real Estate



### OFFERING SUMMARY

Sale Price: \$300,000

Price / SF: \$3.44

Lot Size: 2 Acres

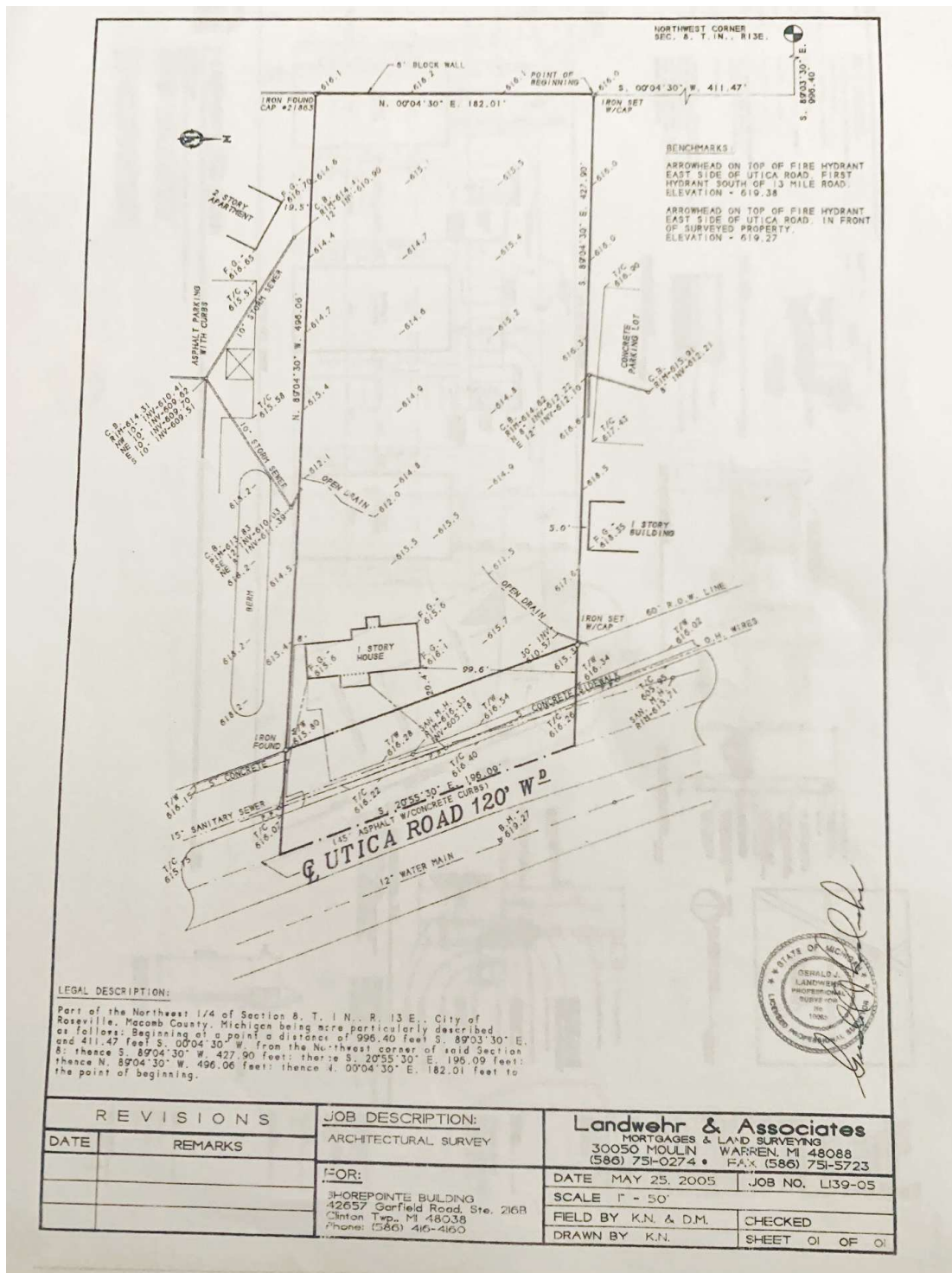
Zoning: B-1

### PROPERTY OVERVIEW

Excellent opportunity to develop this 2 acre site. Available for office, medical, retail or multi-family. Previous site plan approved for 24 condo units (1,080 SF; 2 bed, 1.5 bath and carport) Available with T.O.P.O. survey, soil boring report, phrase 1 study, site plan & construction drawings.

### PROPERTY HIGHLIGHTS

- Fraser School District
- Currently Zoned B-1 - Possible Rezoning
- Many land uses / Development are possible



**P.A. COMMERCIAL**  
Corporate & Investment Real Estate

26555 Evergreen Road, Suite 1500 • Southfield, MI 48076

FOR MORE INFORMATION CONTACT:

**PHILLIP MYERS** Senior Associate

phil@pacommercial.com (P) 248.281.9904 (C) 586.242.4047











