

W 2ND & LLOYD STREETS
CHESTER, PA

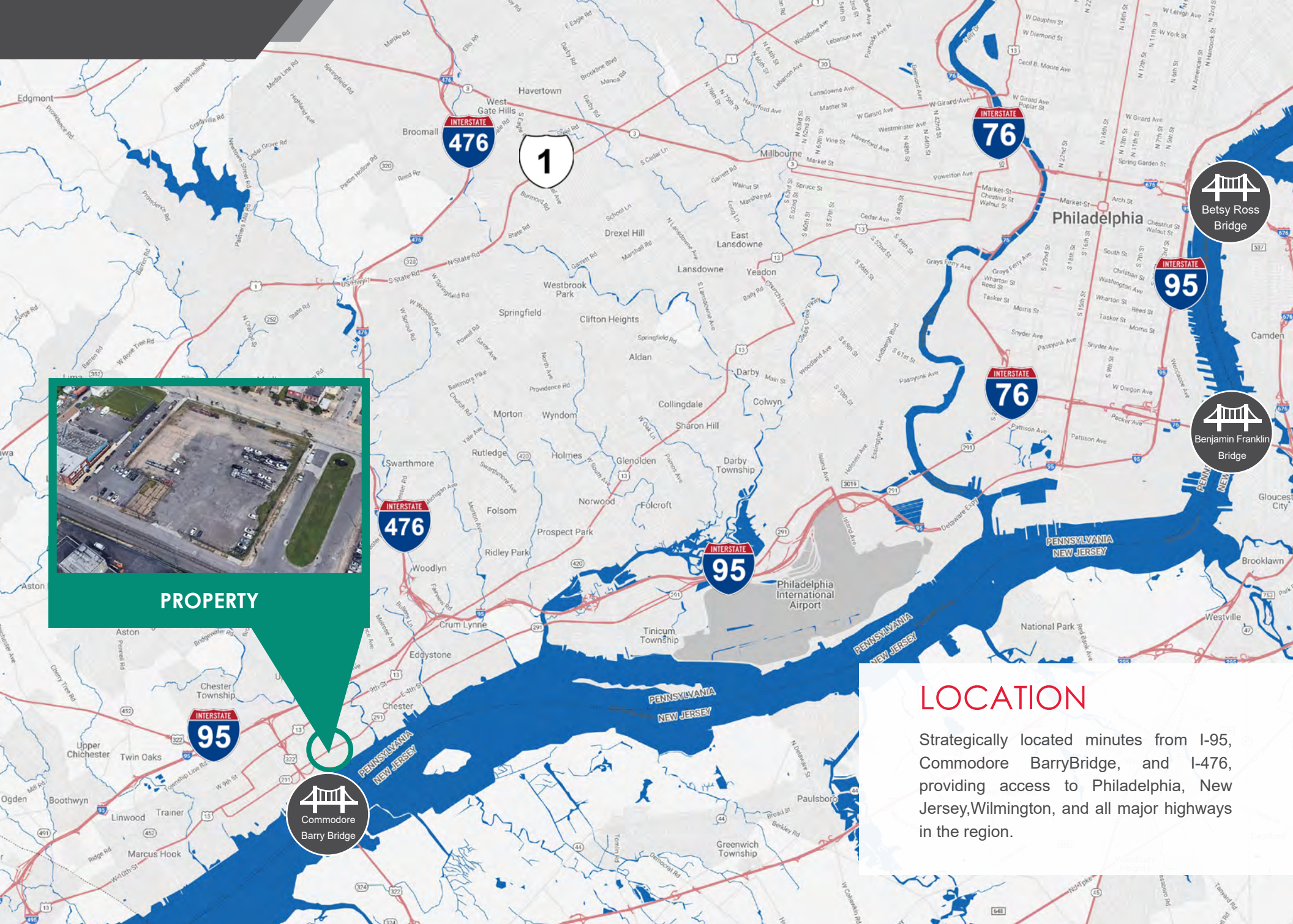
AVAILABLE FOR LEASE
VACANT LAND

2.1 Acres

PROPERTY HIGHLIGHTS

- **ZONING:**
LIC – Light Industrial / Commercial District (City of Chester)
- **FRONTAGE:**
W 2nd St – 295' & Pennell St – 315' & Lloyd St – 300' & W Front St – 315'
- **PERMISSIBLE USES:**
Warehousing and storage, port facilities not involving hazardous materials, self-storage, distribution center, industrial equipment sales, tractor trailer parking





PROPERTY



LOCATION

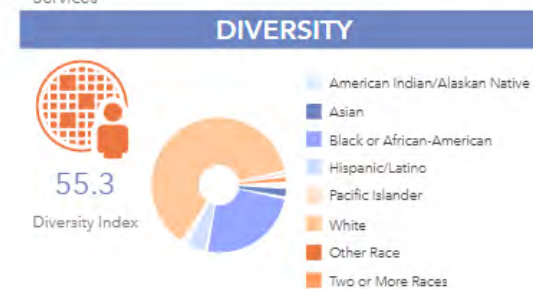
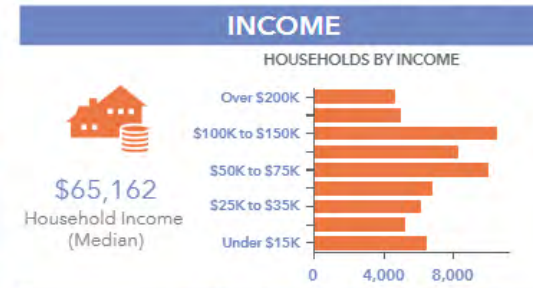
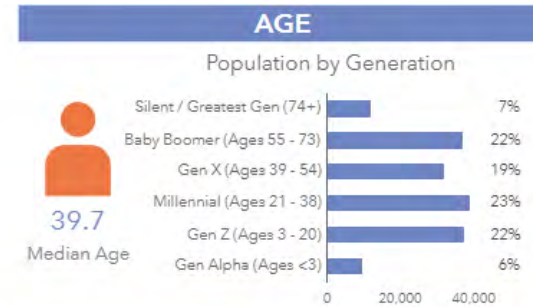
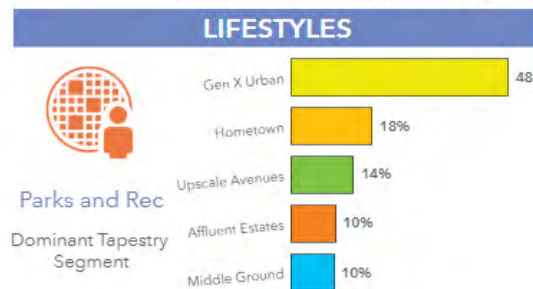
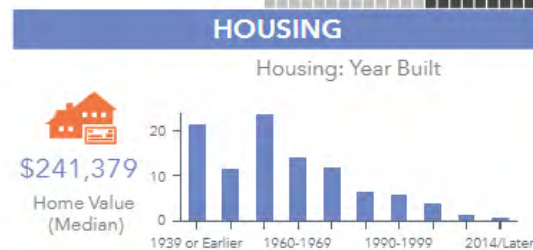
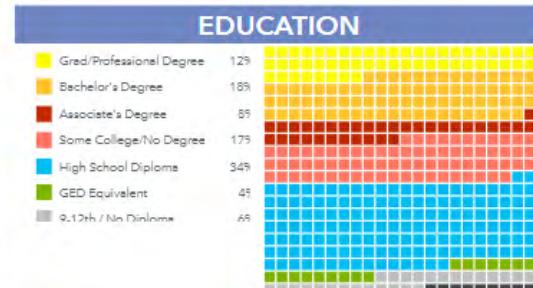
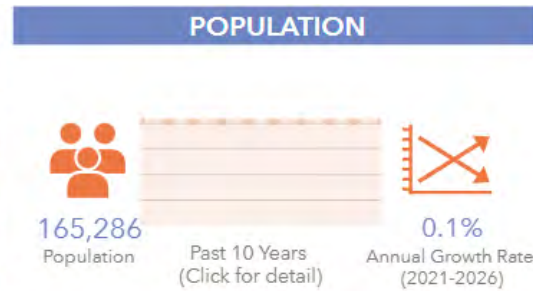
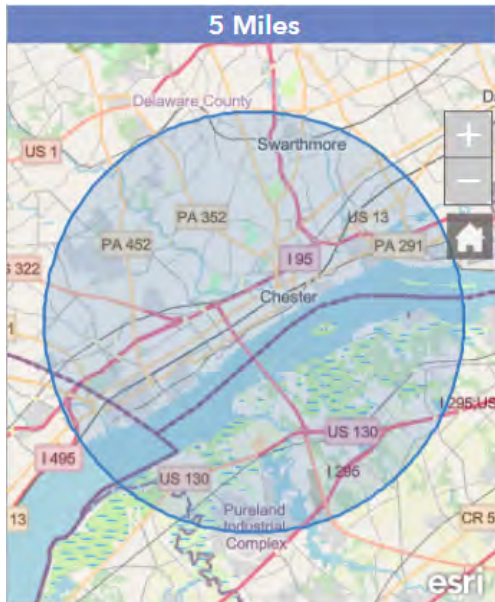
Strategically located minutes from I-95, Commodore Barry Bridge, and I-476, providing access to Philadelphia, New Jersey, Wilmington, and all major highways in the region.

W 2nd & Lloyd Streets, Chester, PA 19013

AERIAL



DEMOGRAPHICS



v1.0

CONTACT



Chris Pennington

Partner & Senior Vice President

215.448.6053

cpennington@binswanger.com



Three Logan Square
1717 Arch Street, Suite 5100
Philadelphia, PA, 19103
Phone: 215.448.6000
binswanger.com

The information contained herein is from sources deemed reliable, but no warranty or representation is made as to the accuracy thereof and no liability may be imposed.