

LAKEVIEW PLAZA

6003-6063 NW 31ST AVE



PROPERTY DETAILS

- Base rent: \$14.00 PSF
- Estimated OPEX: \$3.51 PSF
- Space Available: 11,307 +/- SF
- Building A fronts NW 31st Street, features retail-showroom type warehouse bays
- Ceiling height: 18'
- Each bay/suite is separately metered for tenant electrical

ABOUT PROPERTY



PRICE

\$14.00 SF/yr (NNN)



YEAR BUILT

1978



AVAILABLE SF

11,307



PARKING

Surface



LOCATION

North Broward County

For more information:

Jonathan Thiel

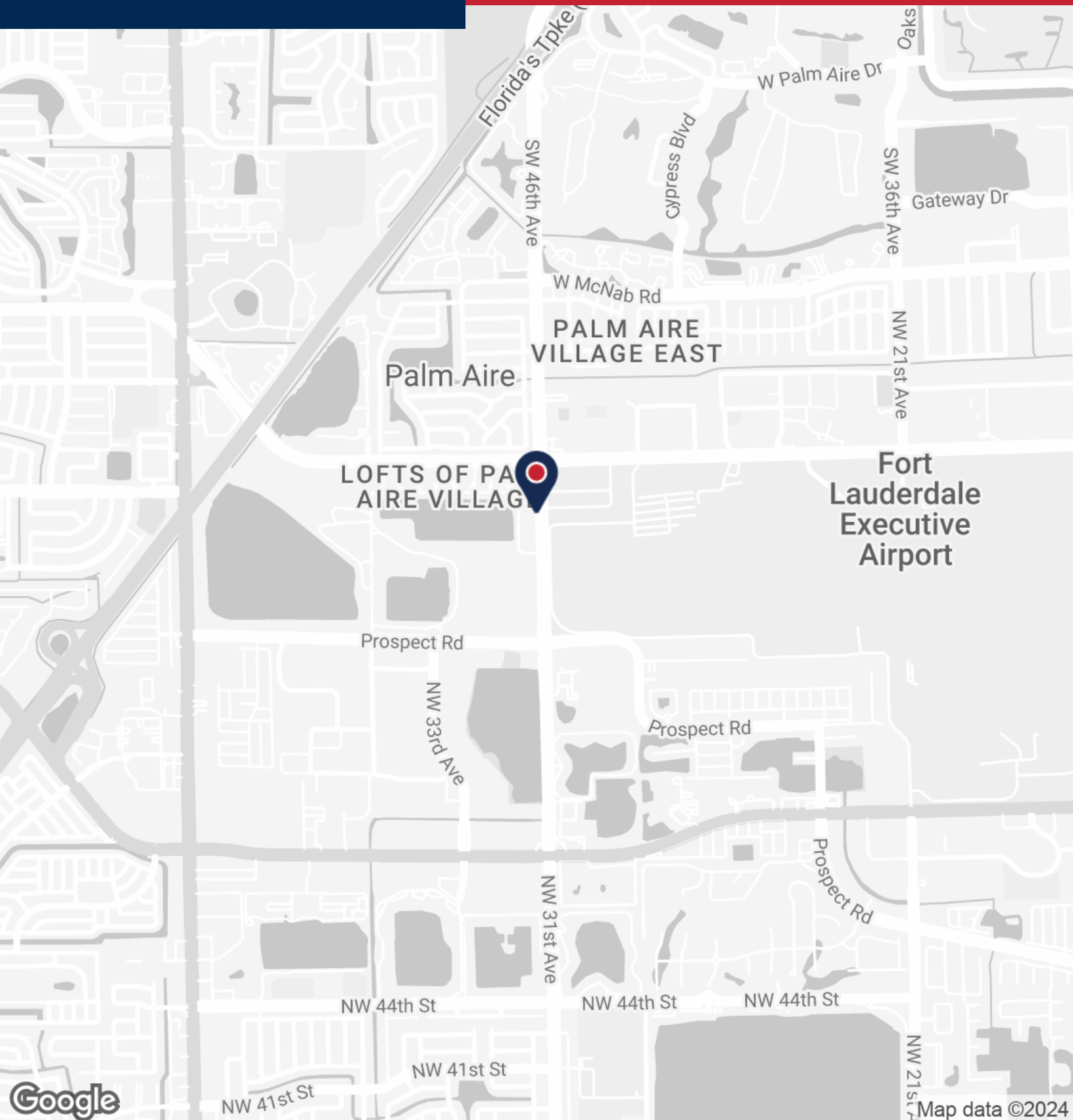
954.652.2020 | Jthiel@Bergercommercial.Com
bergercommercial.com

St. George Guardabassi

954.652.2032 | St.George@Bergercommercial.Com



Information furnished regarding this property is from sources deemed reliable, but no warranty or representation as to the accuracy thereof and it is submitted subject to errors, omissions, prior sale, lease or withdrawal without prior notice.



For more information:

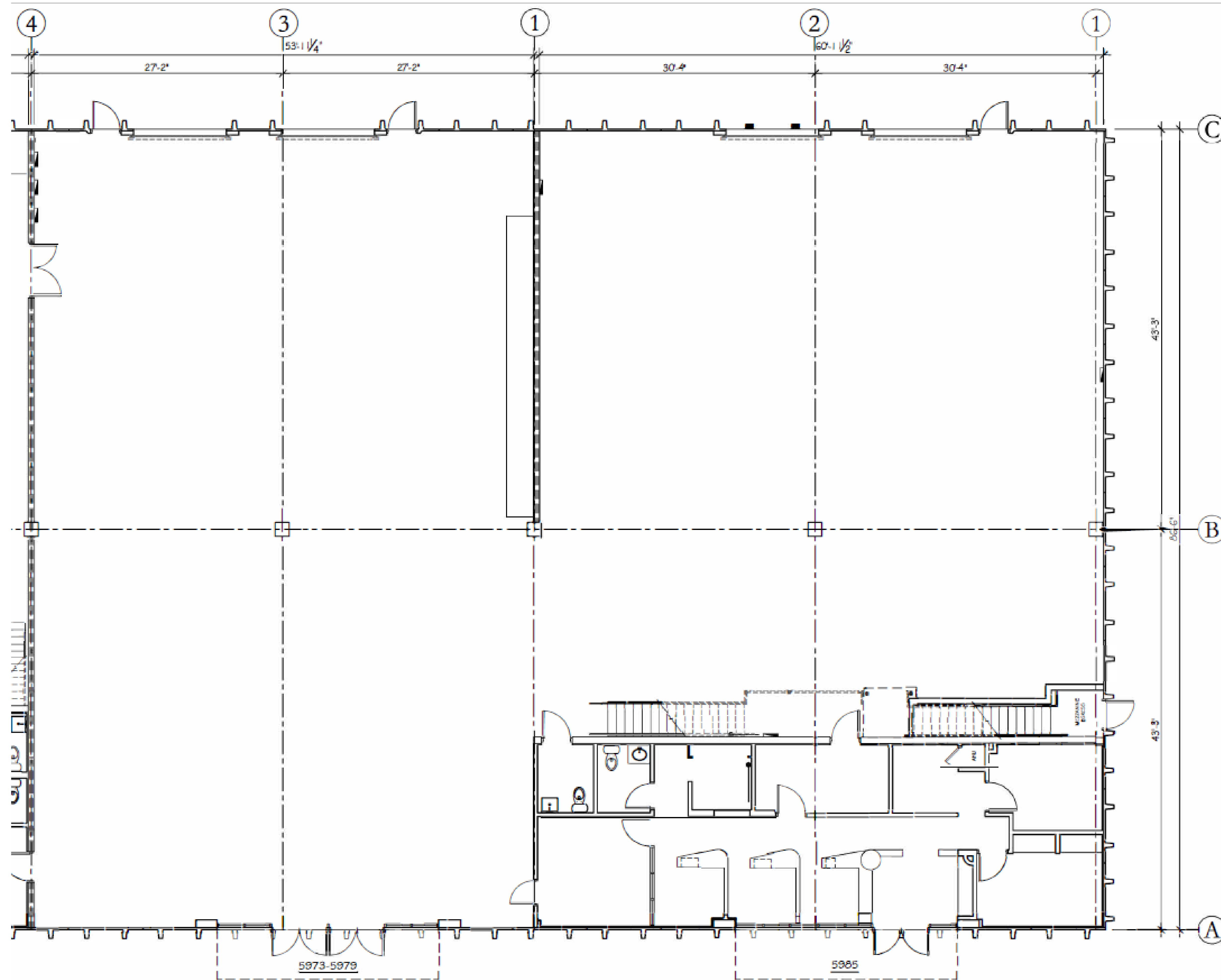
Jonathan Thiel

954.652.2020 | Jthiel@Bergercommercial.Com
bergercommercial.com

St. George Guardabassi

954.652.2032 | St.George@Bergercommercial.Com





Suite #5985= 5,319 SQ.FT.
MEZZANINE 1,270 SQ.FT.

Suite #5973 -#5979= 4,718 SQ.FT.
TOTAL 11,307 SQ.FT.