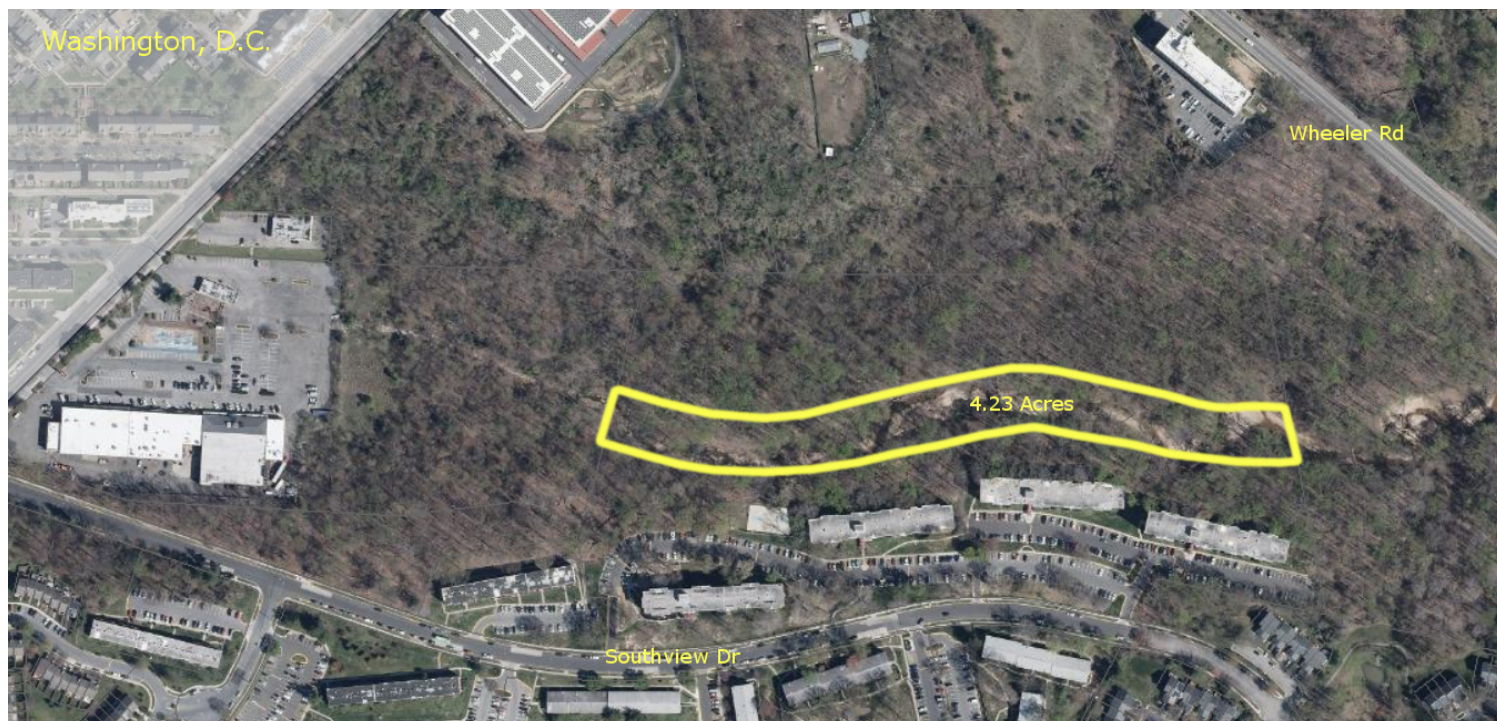


LAND FOR SALE

SOUTHVIEW DRIVE LAND

Southview Drive, Oxon Hill, MD 20750

Available: 4.23 Acres



LISTING DATA

AVAILABLE SF: 4.23 Acres

ECONOMIC DATA

SALE PRICE: \$60,000

PROPERTY INFORMATION

COUNTY: Prince George's

MARKET: Oxon Hill

SUBMARKET: Barnaby Run Stream Valley Park

PROPERTY OVERVIEW

Recreational Land For Sale - 4+ acres of privacy and 1,500 ft of Barnaby Run Creek frontage. Have your own private, idyllic, wooded campsite on the river. Only minutes from Washington D.C.!!

PROPERTY HIGHLIGHTS

- 4.23 Wooded Acres
- Zoned RMF-20
- 1500 ft of Barnaby Run Creek Frontage
- Backs to open space/Barnaby Run Stream Valley Park
- 15' wide sewer easement
- Approximately 120' wide x 1500' long
- 300 Yards from Washington D.C.
- Outdoor Teaching
- Nature Preserve
- Private Camp/Get Away
- Fish Farm, Mushroom Farm, Urban Farm/Garden

Steve Weiss
Senior Vice President
443.741.4051
sweiss@lee-associates.com

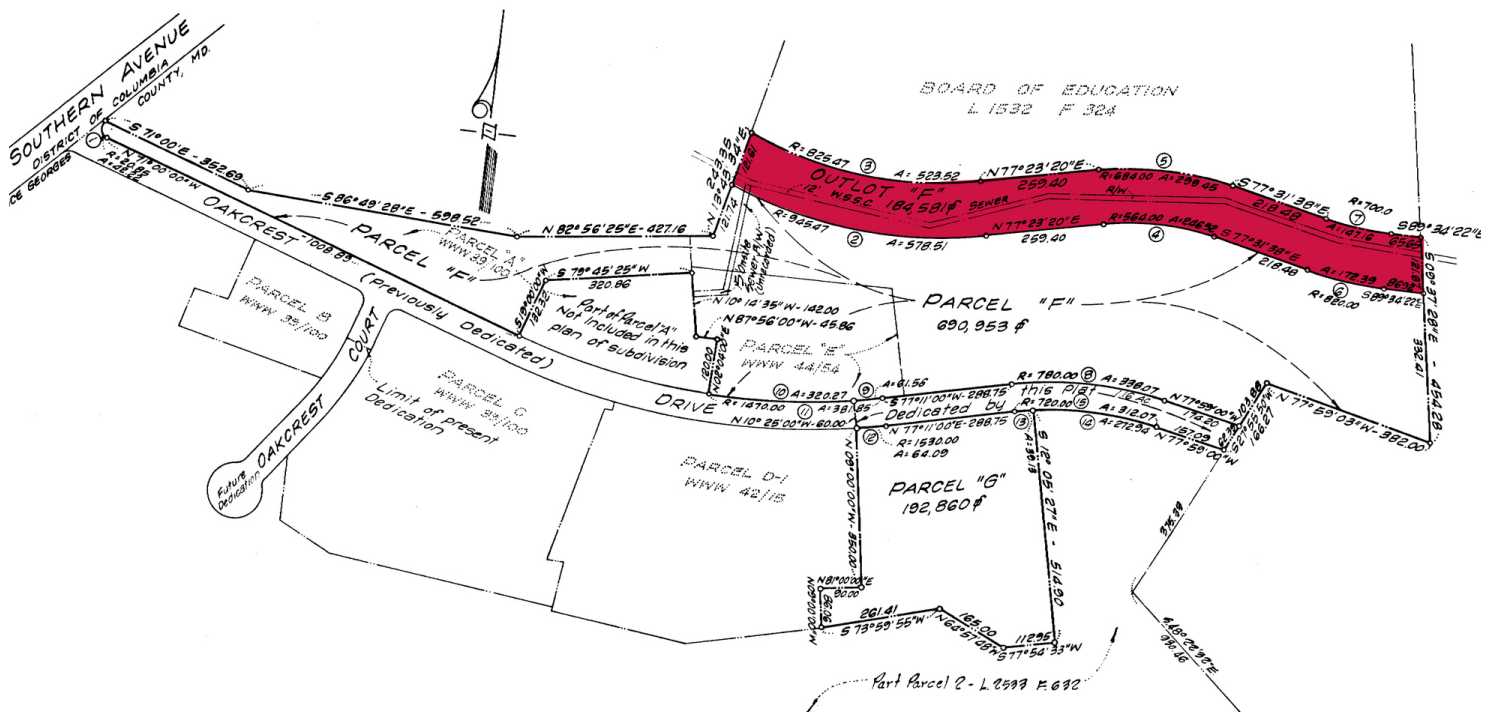
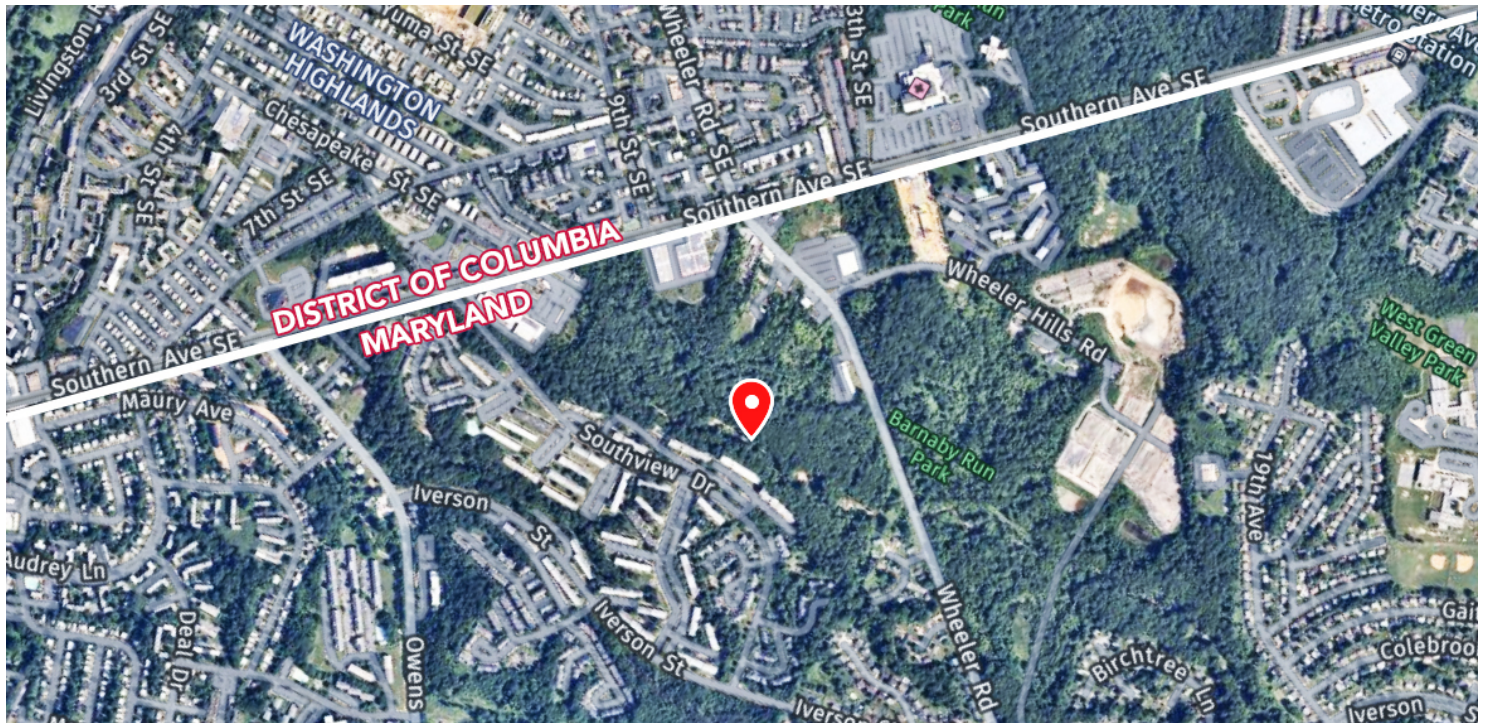
All information furnished regarding property for sale, rental or financing is from sources deemed reliable, but no warranty or representation is made to the accuracy thereof and same is submitted to errors, omissions, change of price, rental or other conditions prior to sale, lease or financing or withdrawal without notice. No liability of any kind is to be imposed on the broker herein.

LAND FOR SALE

SOUTHVIEW DRIVE LAND

Southview Drive, Oxon Hill, MD 20750

Available: 4.23 Acres



Steve Weiss
Senior Vice President
443.741.4051
sweiss@lee-associates.com

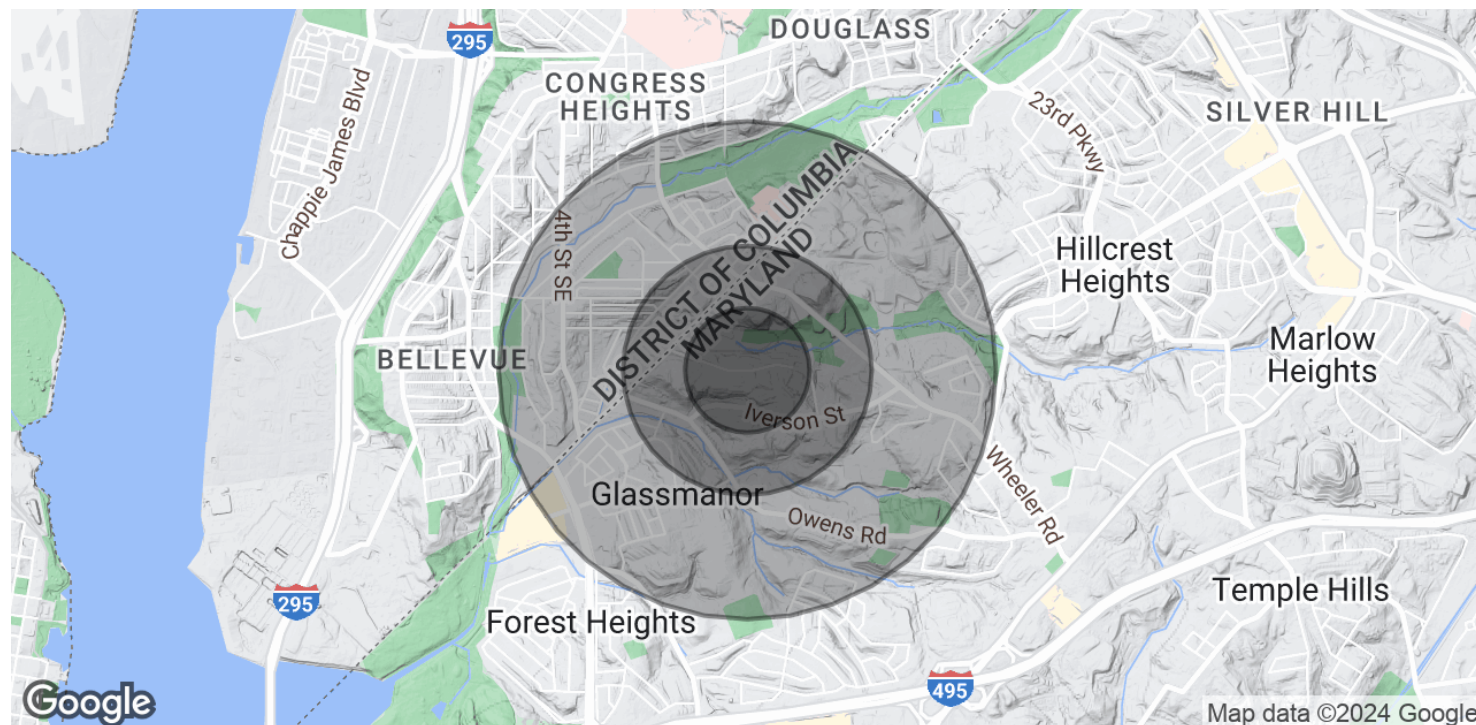
All information furnished regarding property for sale, rental or financing is from sources deemed reliable, but no warranty or representation is made to the accuracy thereof and same is submitted to errors, omissions, change of price, rental or other conditions prior to sale, lease or financing or withdrawal without notice. No liability of any kind is to be imposed on the broker herein.

LAND FOR SALE

SOUTHVIEW DRIVE LAND

Southview Drive, Oxon Hill, MD 20750

Available: 4.23 Acres



POPULATION

	0.25 MILES	0.5 MILES	1 MILE
Total Population	1,976	8,883	29,813
Average Age	32.8	33.4	33.4
Average Age (Male)	24.2	31.4	32.0
Average Age (Female)	34.0	34.9	36.0

HOUSEHOLDS & INCOME

	0.25 MILES	0.5 MILES	1 MILE
Total Households	949	4,144	13,758
# of Persons per HH	2.1	2.1	2.2
Average HH Income	\$56,531	\$56,122	\$54,814
Average House Value	\$502,032	\$337,519	\$307,250

* Demographic data derived from 2020 ACS - US Census

Steve Weiss
Senior Vice President
443.741.4051
sweiss@lee-associates.com

All information furnished regarding property for sale, rental or financing is from sources deemed reliable, but no warranty or representation is made to the accuracy thereof and same is submitted to errors, omissions, change of price, rental or other conditions prior to sale, lease or financing or withdrawal without notice. No liability of any kind is to be imposed on the broker herein.