



ANOKA SHOPPING CENTER & OFFICES

500 WEST MAIN STREET
ANOKA, MN 55303

Frank Jermusek, JD
President / Managing Director
952.820.1615
frank.jermusek@svn.com

Emilia Molle
Principal
952.820.1618
emilia.molle@svn.com

Anoka Shopping Center & Offices



LEASE OVERVIEW

Office Suite Available 885 SF
Negotiable Gross

Office Suite Available 526 SF
Negotiable Gross

Vehicles Per Day: Hwy 10/US 169- 60,000
Main St- 16,000

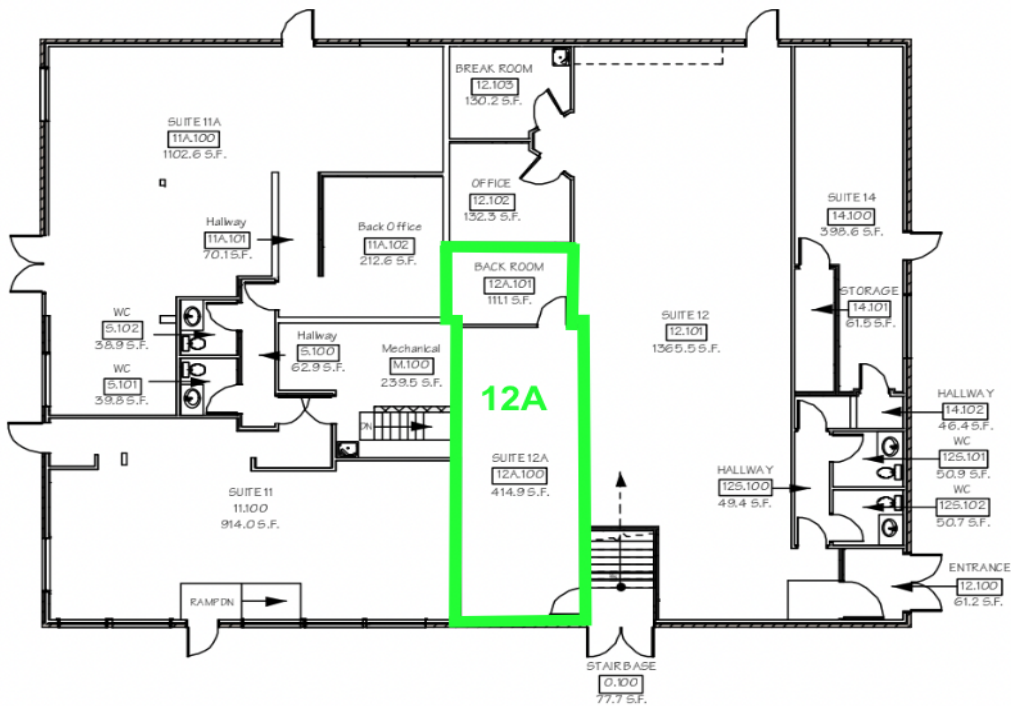
PROPERTY DESCRIPTION

The Anoka Shopping Center & Offices are almost full, but we still have two office suites available! One 885 sf office suite with 3 private offices, reception area, break room with kitchenette, and storage room, and an additional 526 sf office suite with a reception area and private office located on the ground level. With a prime location off of Main Street and Hwy 10/US 169, the Center experiences high vehicle per day counts and a loyal customer base. The Center has been a staple in the Anoka market for decades and continues to provide tenants and customers with an exceptional experience. Contact SVN | Northco now to be a part of this prime opportunity and before the building is full.

PROPERTY HIGHLIGHTS

- NOW OFFERING GREAT INCENTIVE PACKAGES INCLUDING FREE RENT!
- Two office suites are currently available. One 885 sf suite that has 3 private offices, a reception area, a break room with a kitchenette and a storage room, and a 526 sf suite located on the ground level with a reception area and private office.
- New parking lot, signage, landscaping and common area improvements
- Nearly full office building with an adjacent full retail center
- Great co-tenants: Krown Bakery & Eatery, Jellybean & Julia's BBQ, Toni's Flowers, La Monarquita Restaurant and Grocery, Desired Health Chiropractic, H&R Block, Goodfellas Barber Studio, Cellectronix, Shiatsu Cave Massage, Avalon Home Health Care, Hovland Music, The Wash House, Open Box Buys, Trane Transportation, Front Porch Quilt Shop

Available Office Space



SPACE	LEASE RATE	LEASE TYPE	SIZE	COMMENTS
Office Suite 12A	Negotiable	Gross	526 SF	Office suite with reception area and private office located on the ground level

The floor plan of the 26th floor is outlined in green. It includes the following rooms and areas:

- 26** (Large central area, outlined in green)
- 26.201** (Main Room)
- 26.202** (Office)
- 26.203** (Office)
- 26.204** (Office)
- 26.205** (Storage)
- 26.206** (Storage)
- 26.207** (Storage)
- 26.208** (Storage)
- 26.209** (Storage)
- 26.210** (Storage)
- 26.211** (Storage)
- 26.212** (Storage)
- 26.213** (Storage)
- 26.214** (Storage)
- 26.215** (Storage)
- 26.216** (Storage)
- 26.217** (Storage)
- 26.218** (Storage)
- 26.219** (Storage)
- 26.220** (Storage)
- 26.221** (Storage)
- 26.222** (Storage)
- 26.223** (Storage)
- 26.224** (Storage)
- 26.225** (Storage)
- 26.226** (Storage)
- 26.227** (Storage)
- 26.228** (Storage)
- 26.229** (Storage)
- 26.230** (Storage)
- 26.231** (Storage)
- 26.232** (Storage)
- 26.233** (Storage)
- 26.234** (Storage)
- 26.235** (Storage)
- 26.236** (Storage)
- 26.237** (Storage)
- 26.238** (Storage)
- 26.239** (Storage)
- 26.240** (Storage)
- 26.241** (Storage)
- 26.242** (Storage)
- 26.243** (Storage)
- 26.244** (Storage)
- 26.245** (Storage)
- 26.246** (Storage)
- 26.247** (Storage)
- 26.248** (Storage)
- 26.249** (Storage)
- 26.250** (Storage)
- 26.251** (Storage)
- 26.252** (Storage)
- 26.253** (Storage)
- 26.254** (Storage)
- 26.255** (Storage)
- 26.256** (Storage)
- 26.257** (Storage)
- 26.258** (Storage)
- 26.259** (Storage)
- 26.260** (Storage)
- 26.261** (Storage)
- 26.262** (Storage)
- 26.263** (Storage)
- 26.264** (Storage)
- 26.265** (Storage)
- 26.266** (Storage)
- 26.267** (Storage)
- 26.268** (Storage)
- 26.269** (Storage)
- 26.270** (Storage)
- 26.271** (Storage)
- 26.272** (Storage)
- 26.273** (Storage)
- 26.274** (Storage)
- 26.275** (Storage)
- 26.276** (Storage)
- 26.277** (Storage)
- 26.278** (Storage)
- 26.279** (Storage)
- 26.280** (Storage)
- 26.281** (Storage)
- 26.282** (Storage)
- 26.283** (Storage)
- 26.284** (Storage)
- 26.285** (Storage)
- 26.286** (Storage)
- 26.287** (Storage)
- 26.288** (Storage)
- 26.289** (Storage)
- 26.290** (Storage)
- 26.291** (Storage)
- 26.292** (Storage)
- 26.293** (Storage)
- 26.294** (Storage)
- 26.295** (Storage)
- 26.296** (Storage)
- 26.297** (Storage)
- 26.298** (Storage)
- 26.299** (Storage)
- 26.300** (Storage)

The information presented here is deemed to be accurate, but it has not been independently verified. We make no guarantee, warranty or representation. It is your responsibility to independently confirm accuracy and cor.

Additional Photos



City Of Anoka



ANOKA, MN

The Anoka Shopping Center on Main Street is a half mile west of Downtown Anoka, a premiere destination with some of the most progressive and unique shops that the Twin Cities metro area has to offer. The community of diverse local merchants is here to serve visitors, offering antique shops, clothing and gift boutiques, furniture and home décor. The classic and historic riverfront town of Anoka is located just 20 minutes north of Minneapolis and St. Paul on highways 10 or 169. Walk to the many fine eateries including cafés, specialty restaurants, ice cream and pastry shops, bar and grills, co-ops and cool coffee shops. Enjoy live theater and music along with annual art festivals and parades. Stay at the local B&B, walk the trails and corridors or visit the Mississippi River Community Park.

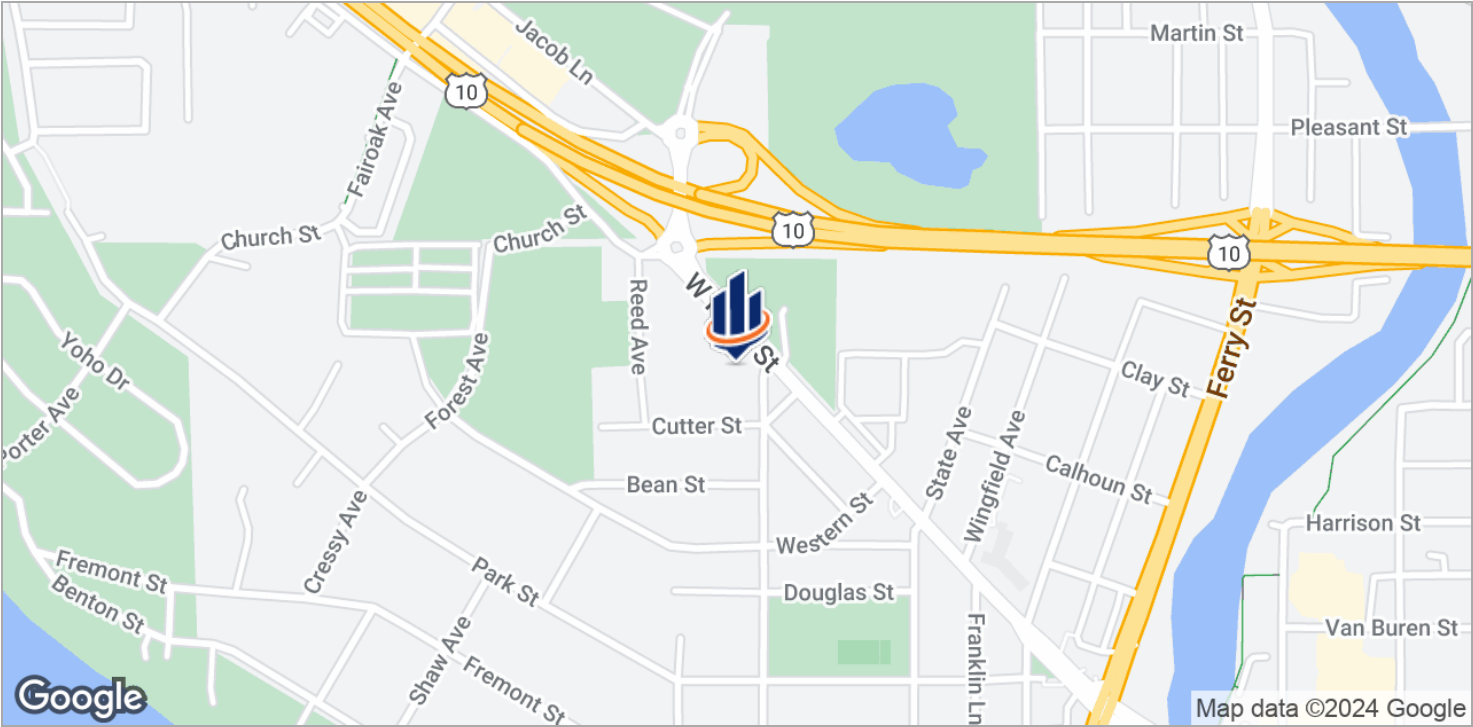
ECONOMIC & BUSINESS CLIMATE

Anoka's downtown business community continues to grow into a fully developed shopping destination housed within the framework of historic buildings and our nostalgic Main Street. In 2012, Downtown Anoka's two-year makeover was complete, with wider sidewalks, brand new roads and stunning landscaping. Main Street was left looking refreshed and as welcoming and authentic as ever.

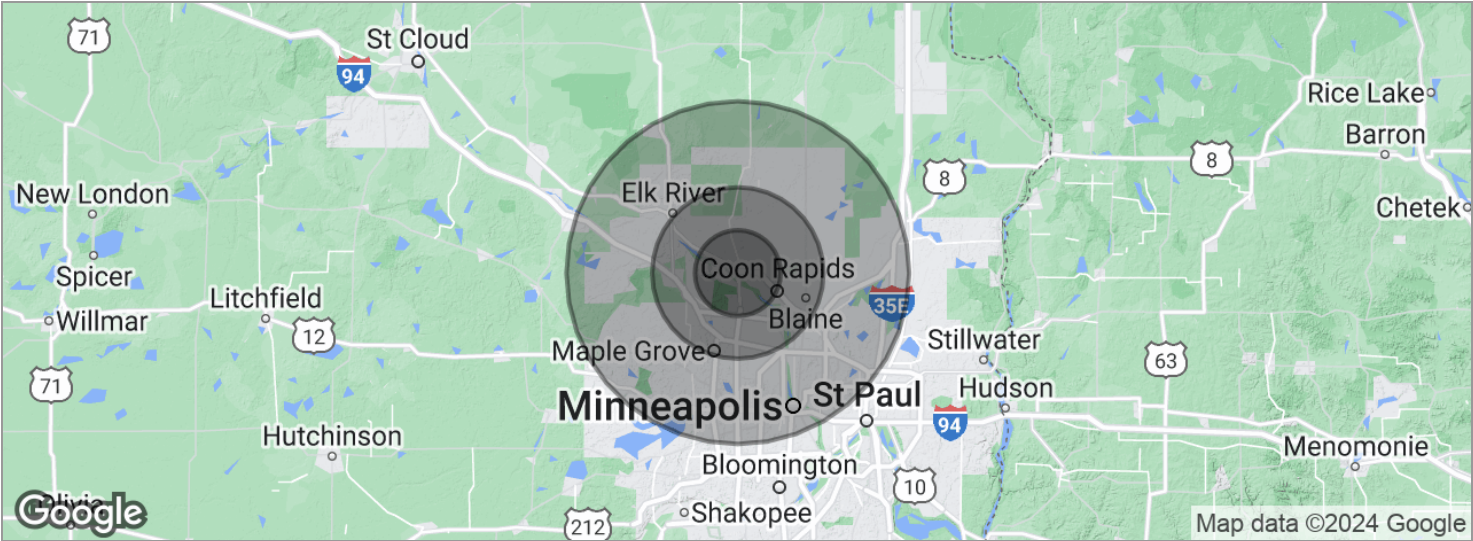
Aerial Photos



Location Maps



Demographics Map



POPULATION	5 MILES	10 MILES	20 MILES
Total population	125,181	438,163	1,508,281
Median age	40.0	39.0	38.1
Median age [Male]	38.8	37.7	37.2
Median age [Female]	40.4	39.8	38.8
HOUSEHOLDS & INCOME	5 MILES	10 MILES	20 MILES
Total households	47,801	165,386	618,140
# of persons per HH	2.6	2.6	2.4
Average HH income	\$100,252	\$101,594	\$100,907
Average house value	\$259,234	\$261,624	\$276,596

* Demographic data derived from 2020 ACS - US Census