



Shop space available at Phoenix shopping center



Join Walmart, Petco, Big Lots,
Mattress Firm, and Starbucks



Great visibility and
traffic counts



Located near Loop-101
and SR-51 freeways

Get more information

James DeCremer

D 480 423 7958

C 602 909 0957

james.decremer@avisonyoung.com

Matt Milinovich

D 480 423 7959

C 602 885 9393

matt.milinovich@avisonyoung.com

Alec Miller

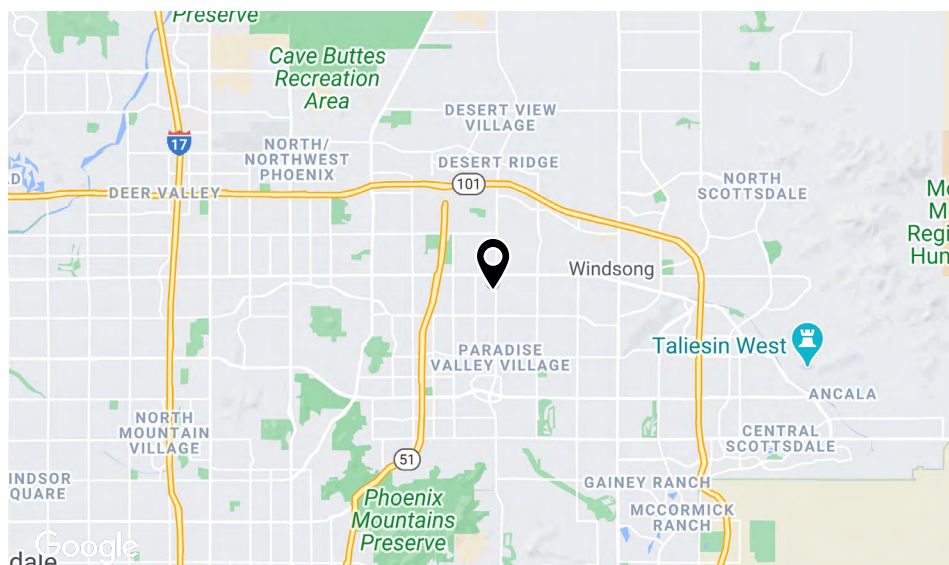
D 480 423 7955

C 480 531 0369

alec.miller@avisonyoung.com

Location

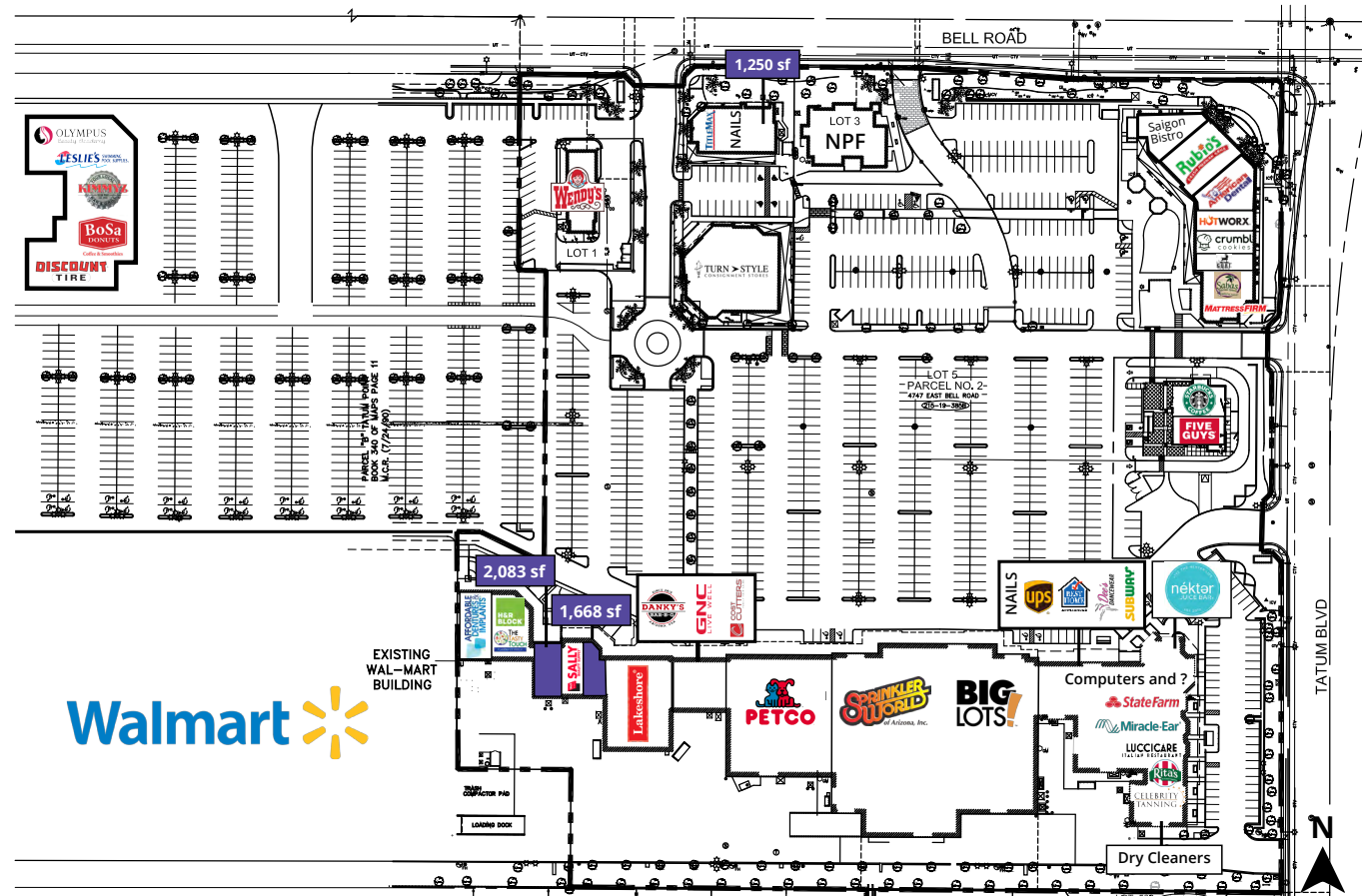
Shop space available
SWC Tatum Blvd & Bell Rd



Site plan & availability

Shop space available
SWC Tatum Blvd & Bell Rd

#	Tenant	Size
1	Affordable Dentures	3,200 sf
3	H&R Block	2,027 sf
5	The Tasty Touch Flavors of India	1,400 sf
11	Available - former animal hospital	2,083 sf
13	Sally Beauty	1,608 sf
15	Available	1,668 sf
25	Lakeshore Learning Materials	8,800 sf
31	Danky's BBQ	1,328 sf
33	GNC	1,306 sf
35	Cost Cutters	1,328 sf
37	Petco	16,560 sf
38	Sprinkler World of Arizona	16,394 sf
39	Big Lots	30,000 sf
43	Love Polish	1,307 sf
45	UPS	1,307 sf
47	Best Home Appliances	6,558 sf
49	Dee's Dancewear	2,400 sf
53	Dry Cleaners	1,830 sf
55	Celebrity Tanning	1,568 sf
57	Rita's Italian Ice	1,200 sf
59	Luccicare Italian Restaurant	1,824 sf
61	Miracle Ear	1,251 sf
63	State Farm Insurance	1,200 sf
65	Computers and ?	848 sf
67	Nekter	1,509 sf
69	Subway	1,240 sf
A-1	Discount Tire	6,889 sf
A-5	Bosa Donuts	1,845 sf
A-9	Kimmyz	3,691 sf
A-13	Leslie's	3,642 sf
A-15	Olympus Beauty Academy	3,064 sf
C-1	TitleMax of Arizona	2,854 sf
C-2	Above and Beyond Nails	1,003 sf



#	Tenant	Size
C-3	Available	1,250 sf
E-1	Mattress Firm	3,737 sf
E-5	Saba's Mediterranean	1,493 sf
E-7	GOAT Haircuts	1,493 sf
E-9	Crumble Cookies	1,493 sf
E-11	Hotworx	1,903 sf
E-15	American Dental Companies	3,635 sf


#	Tenant	Size
E-17	Rubio's	2,435 sf
E-19	Saigon Bistro	1,997 sf
4701	Wendy's	4,000 sf
4711	Turn Style	10,116 sf
4617	Walmart	-
16900-10	Five Guys	2,329 sf
16900-11	Starbucks Coffee	1,964 sf


Trade area


Shop space available
SWC Tatum Blvd & Bell Rd





Demographics

	1-mile	3-miles	5-miles
Population	12,036	111,407	322,628


	1-mile	3-miles	5-miles
Median age	39.9	39.4	39.4

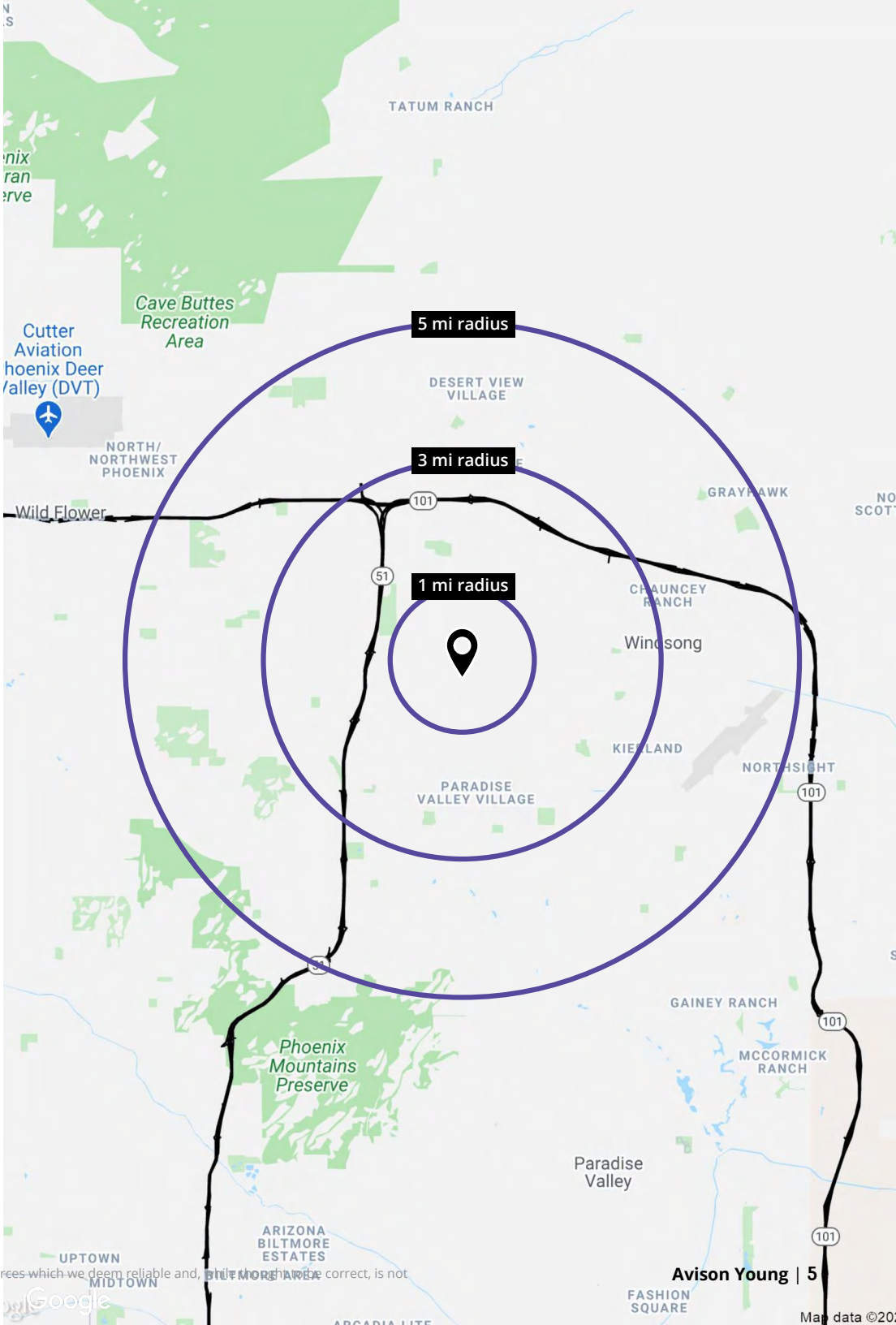
	1-mile	3-miles	5-miles
Daytime employment	5,757	39,056	100,142

	1-mile	3-miles	5-miles
Avg. HH income	\$87,339	\$93,885	\$86,949

	1-mile	3-miles	5-miles
HH units	4,722	45,745	134,988

Traffic counts

	Tatum Boulevard	±72,108 cpd
	Bell Road	±82,163 cpd





Contact us

James DeCremer

D 480 423 7958

C 602 909 0957

james.decremer@avisonyoung.com

Matt Milinovich

D 480 423 7959

C 602 885 9393

matt.milinovich@avisonyoung.com

Alec Miller

D 480 423 7955

C 480 531 0369

alec.miller@avisonyoung.com

Visit us online
avisonyoung.com

© 2022 Avison Young - Arizona, Ltd. All rights reserved.

E. & O.E.: The information contained herein was obtained from sources which we deem reliable and, while thought to be correct, is not guaranteed by Avison Young.

2720 E Camelback Road | Suite 150 | Phoenix, AZ 85016 | 480 994 8155

**AVISON
YOUNG**