

FOR LEASE

1647 BENNING RD NE, WASHINGTON, DC 20002



EXCLUSIVE ADVISORS:

STEVE SOLOMON
202.441.3360
steve@solomonreal.com

ERIK ULSAKER
703.861.0373
EU@Inf.com

CHRISTINA CHA
410.303.5520
ccha@Inf.com



1647 Benning Rd NE represents an opportunity to lease three floors of medical office space in the Northeast Submarket. The Greater Northeast Medical Center has 38 parking spaces, an elevator and is just off the Benning Rd Bus Line. Neighboring tenants include McDonald's next door, and across the street from the Hechinger Mall which includes Starbucks, Safeway, Pizza Hut, Dollar Tree, Ross and more.

Highlights:

Address: 1647 Benning Rd NE, Washington, DC 20002

Building Size: 18,197 SF

Lease Rate: Negotiable

Parcel: 4510-0151

Size: 466-1,258 SF

Walk Score: 97 (Walker's Paradise)

Zoning: MU-4

Property Type: Medical Office



EXCLUSIVE ADVISORS:

STEVE SOLOMON
202.441.3360
steve@solomonreal.com

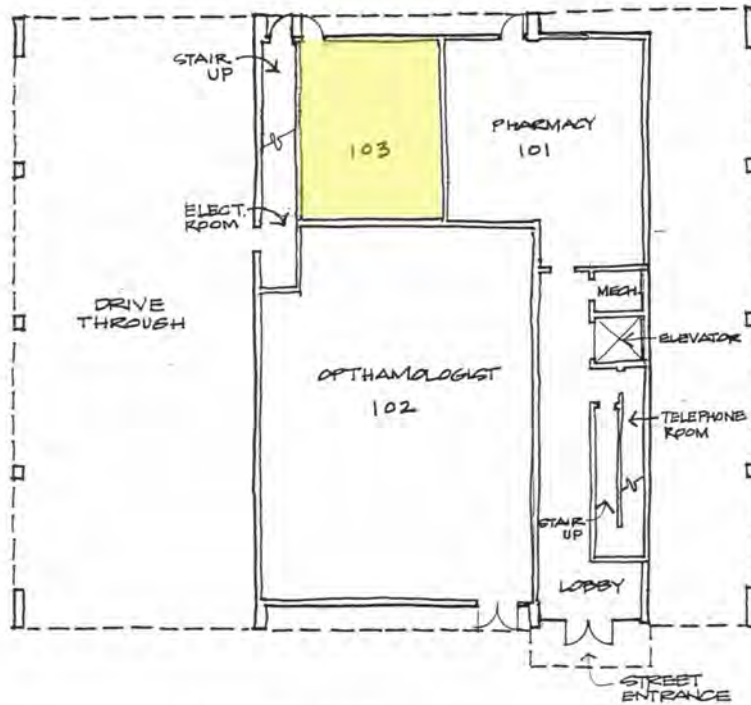
ERIK ULSAKER
703.861.0373
EU@Inf.com

CHRISTINA CHA
410.303.5520
ccha@Inf.com

LONG & FOSTER
COMMERCIAL DIVISION

1647 BENNING ROAD, NE

WASHINGTON, DC



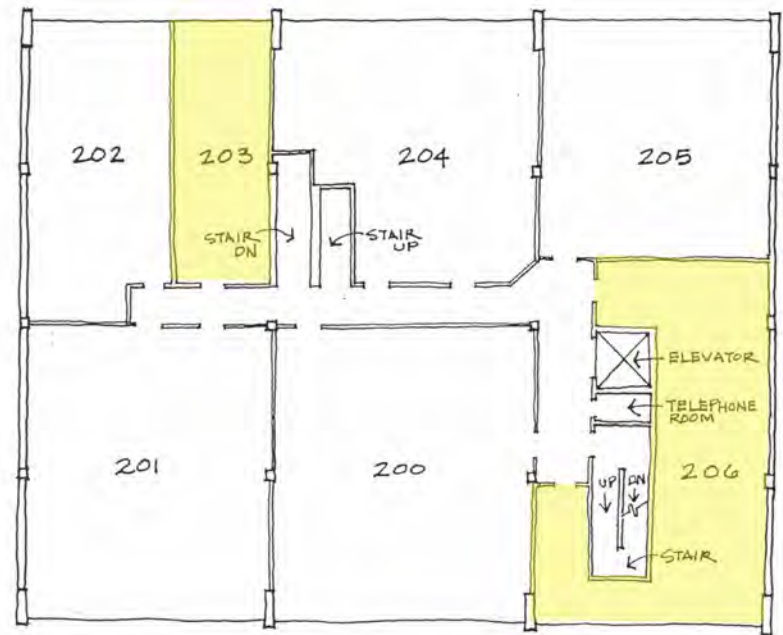
FIRST FLOOR
EXISTING CONDITION

1

SCALE: 1/16" = 1'-0"

1647 BENNING ROAD, N.E.

WASHINGTON, D.C.



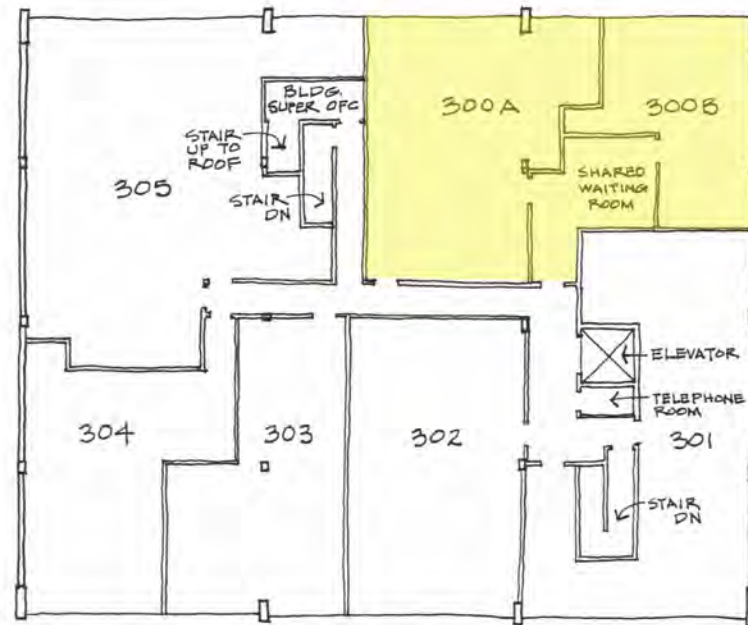
SECOND FLOOR
EXISTING CONDITION

2

SCALE: 1/16" = 1'-0"

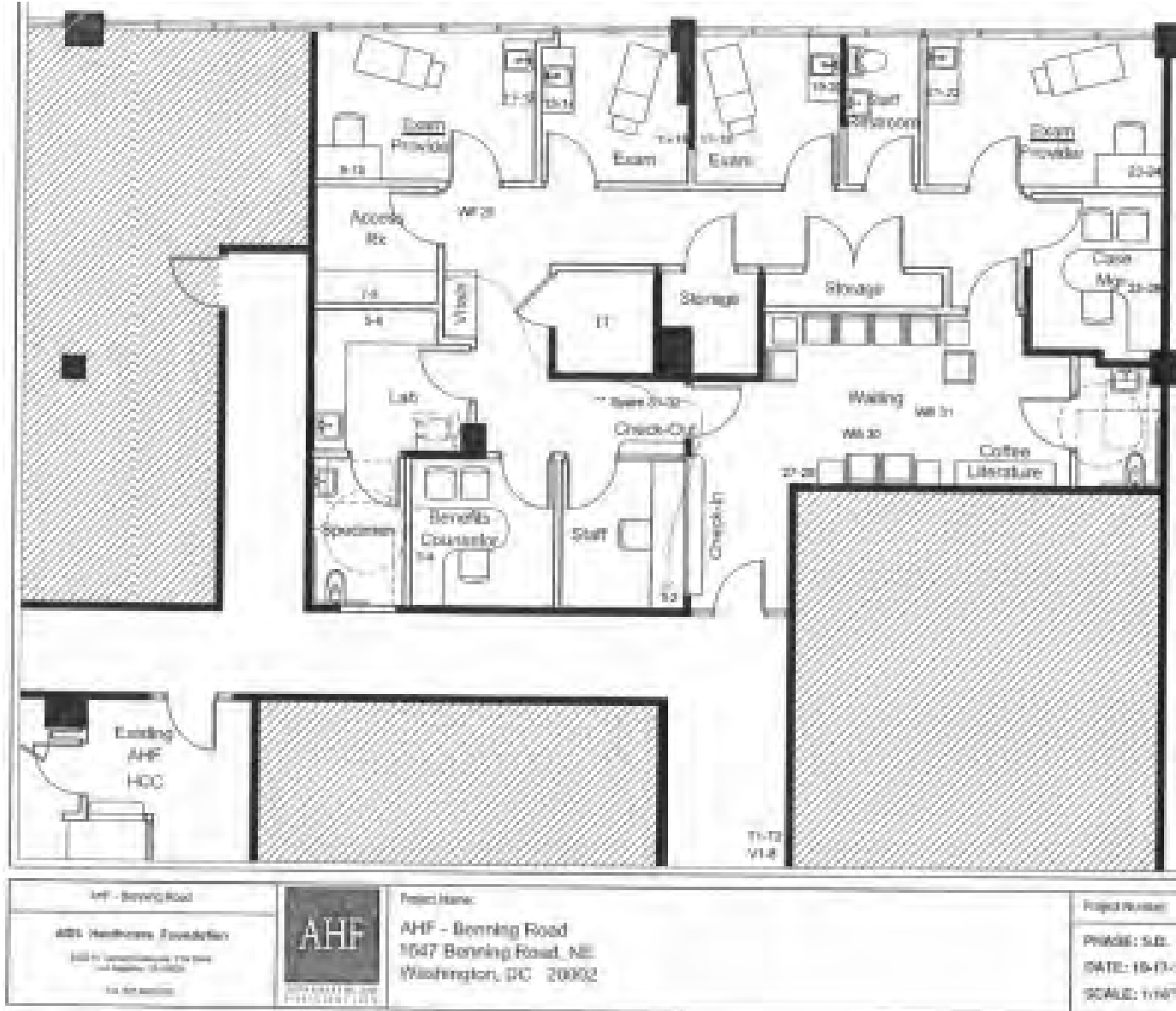


1647 BENNING ROAD, N.E.
WASHINGTON, DC.



THIRD FLOOR
EXISTING CONDITION
③
SCALE: 1/16" = 1'-0"

Floor Plan - Suite 300A & 300B



Exclusive Advisors

STEVE SOLOMON
202.441.3360
steve@solomonreal.com

ERIK ULSAKER
703.861.0373
EU@Inf.com

CHRISTINA CHA
410.303.5520
ccha@Inf.com

LONG & FOSTER
COMMERCIAL DIVISION

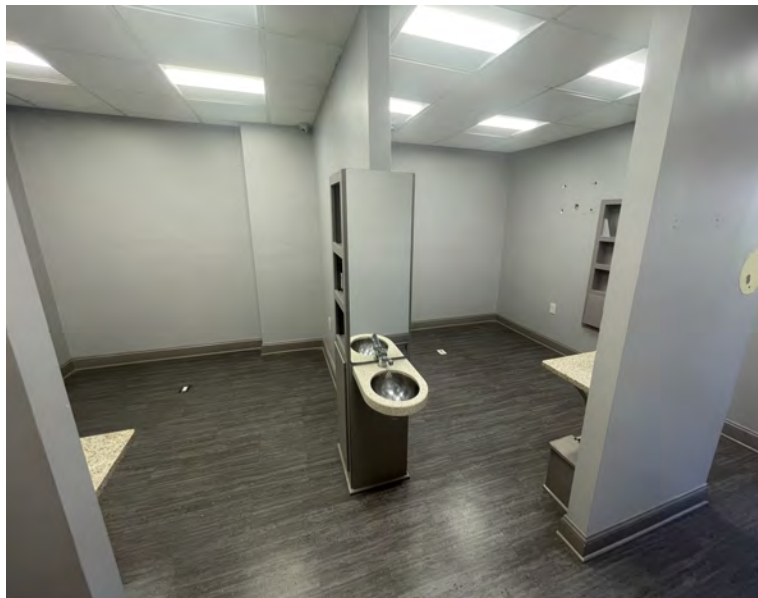
Additional Photos



Suite 203



Suite 206



Suite 206



Suite 300A

Exclusive Advisors

STEVE SOLOMON
202.441.3360
steve@solomonreal.com

ERIK ULSAKER
703.861.0373
EU@lnf.com

CHRISTINA CHA
410.303.5520
ccha@lnf.com

LONG & FOSTER
COMMERCIAL DIVISION



Exclusive Advisors

STEVE SOLOMON
202.441.3360
steve@solomonreal.com

ERIK ULSAKER
703.861.0373
EU@Inf.com

CHRISTINA CHA
410.303.5520
ccha@Inf.com

LONG & FOSTER
COMMERCIAL DIVISION