

Development Site

Highway 21 Covington, LA 70433

EXECUTIVE SUMMARY



Offering Summary

Sale Price:	\$850,000
Available SF:	
Lot Size:	1.28 Acres
Price / Acre:	\$664,063
Zoning:	HC-2

Property Highlights

- One of the last remaining development sites along Highway 21
- Located in close proximity to St. Tammany Parish Regional Hospital
- Surrounded by medical offices, professional offices, and traditional retail
- No wetlands (current approved Jurisdictional Determination)

Matthew Pittman, CCIM

504.322.1275

mpittman@beaibox.com

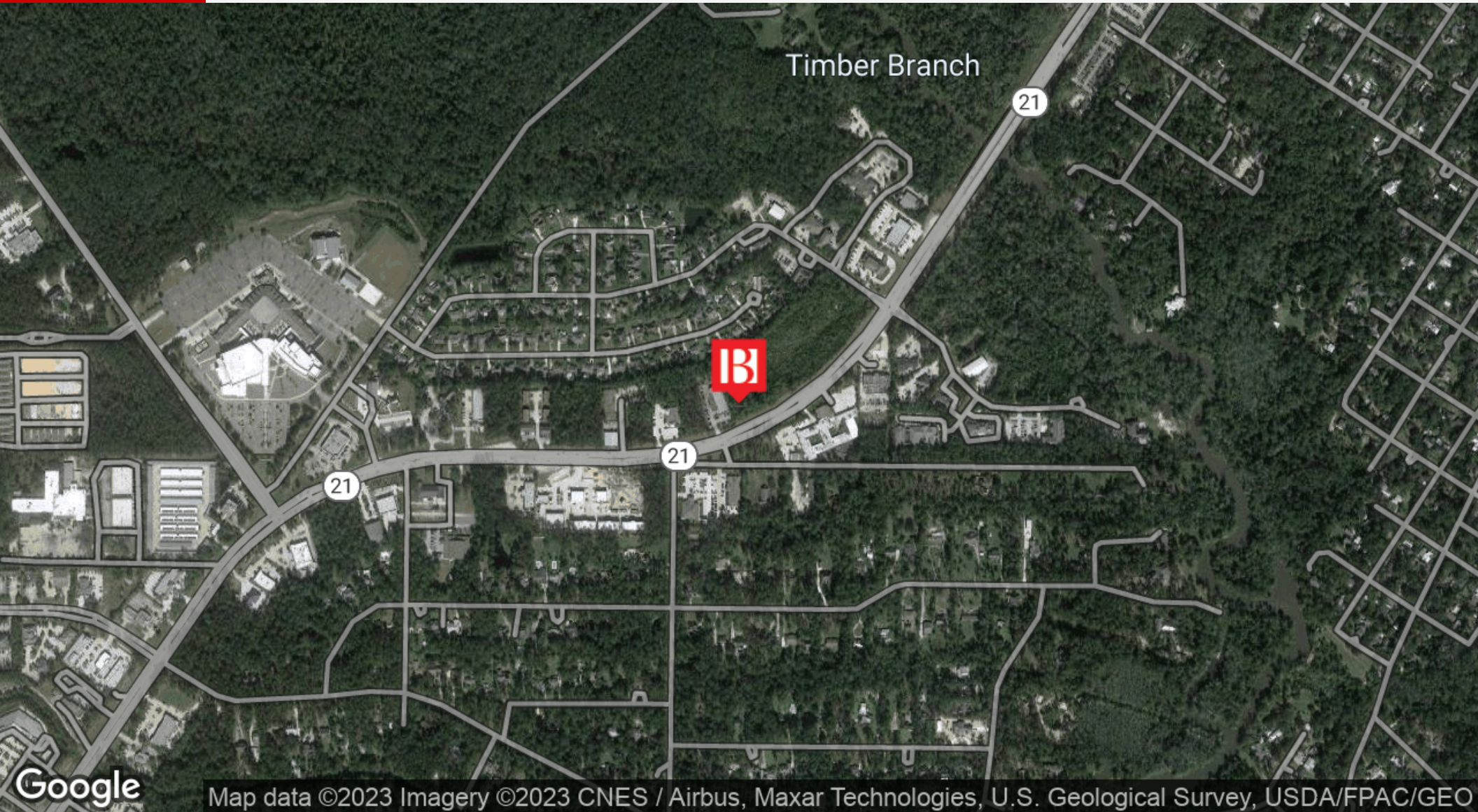
Broker of Record, Beau J. Box; Licensed by the Louisiana Real Estate Commission, Mississippi Real Estate Commission, Alabama Real Estate Commission and Florida Real Estate Commission, USA. This information has been secured from sources we believe to be reliable, but we make no representations or warranties, expressed or implied, as to the accuracy of the information. References to square footage or age are approximate. Buyer must verify the information and bears all risk for any inaccuracies. © Beau Box Commercial Real Estate. | January 10, 2023



Development Site

Highway 21 Covington, LA 70433

LOCATION MAP



Matthew Pittman, CCIM
504.322.1275
mpittman@beaibox.com

Broker of Record, Beau J. Box; Licensed by the Louisiana Real Estate Commission, Mississippi Real Estate Commission, Alabama Real Estate Commission and Florida Real Estate Commission, USA. This information has been secured from sources we believe to be reliable, but we make no representations or warranties, expressed or implied, as to the accuracy of the information. References to square footage or age are approximate. Buyer must verify the information and bears all risk for any inaccuracies. © Beau Box Commercial Real Estate. | January 10, 2023



Development Site

Highway 21 Covington, LA 70433

ADDITIONAL PHOTOS



Matthew Pittman, CCIM
504.322.1275
mpittman@beaibox.com

Broker of Record, Beau J. Box; Licensed by the Louisiana Real Estate Commission, Mississippi Real Estate Commission, Alabama Real Estate Commission and Florida Real Estate Commission, USA. This information has been secured from sources we believe to be reliable, but we make no representations or warranties, expressed or implied, as to the accuracy of the information. References to square footage or age are approximate. Buyer must verify the information and bears all risk for any inaccuracies. © Beau Box Commercial Real Estate. | January 10, 2023



Development Site

Highway 21 Covington, LA 70433

ADDITIONAL PHOTOS



Matthew Pittman, CCIM
504.322.1275
mpittman@beaibox.com

Broker of Record, Beau J. Box; Licensed by the Louisiana Real Estate Commission, Mississippi Real Estate Commission, Alabama Real Estate Commission and Florida Real Estate Commission, USA. This information has been secured from sources we believe to be reliable, but we make no representations or warranties, expressed or implied, as to the accuracy of the information. References to square footage or age are approximate. Buyer must verify the information and bears all risk for any inaccuracies. © Beau Box Commercial Real Estate. | January 10, 2023



Development Site

Highway 21 Covington, LA 70433

ADDITIONAL PHOTOS



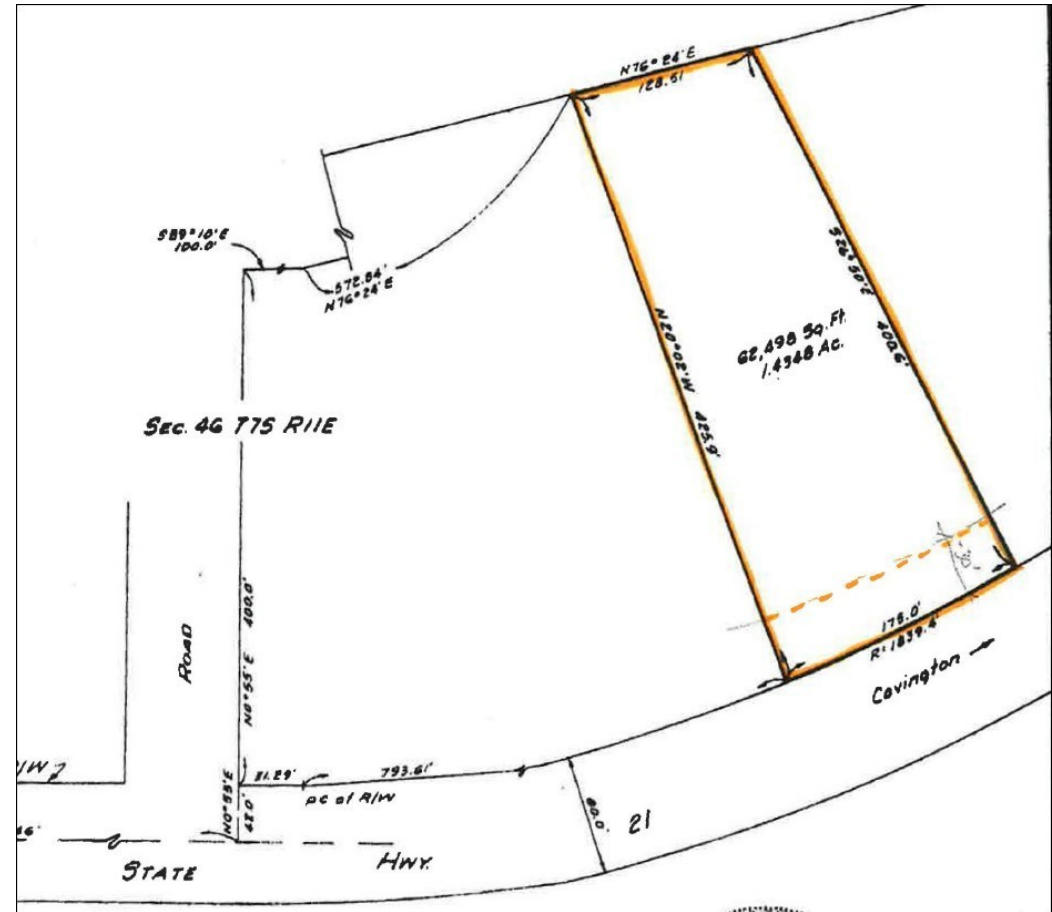
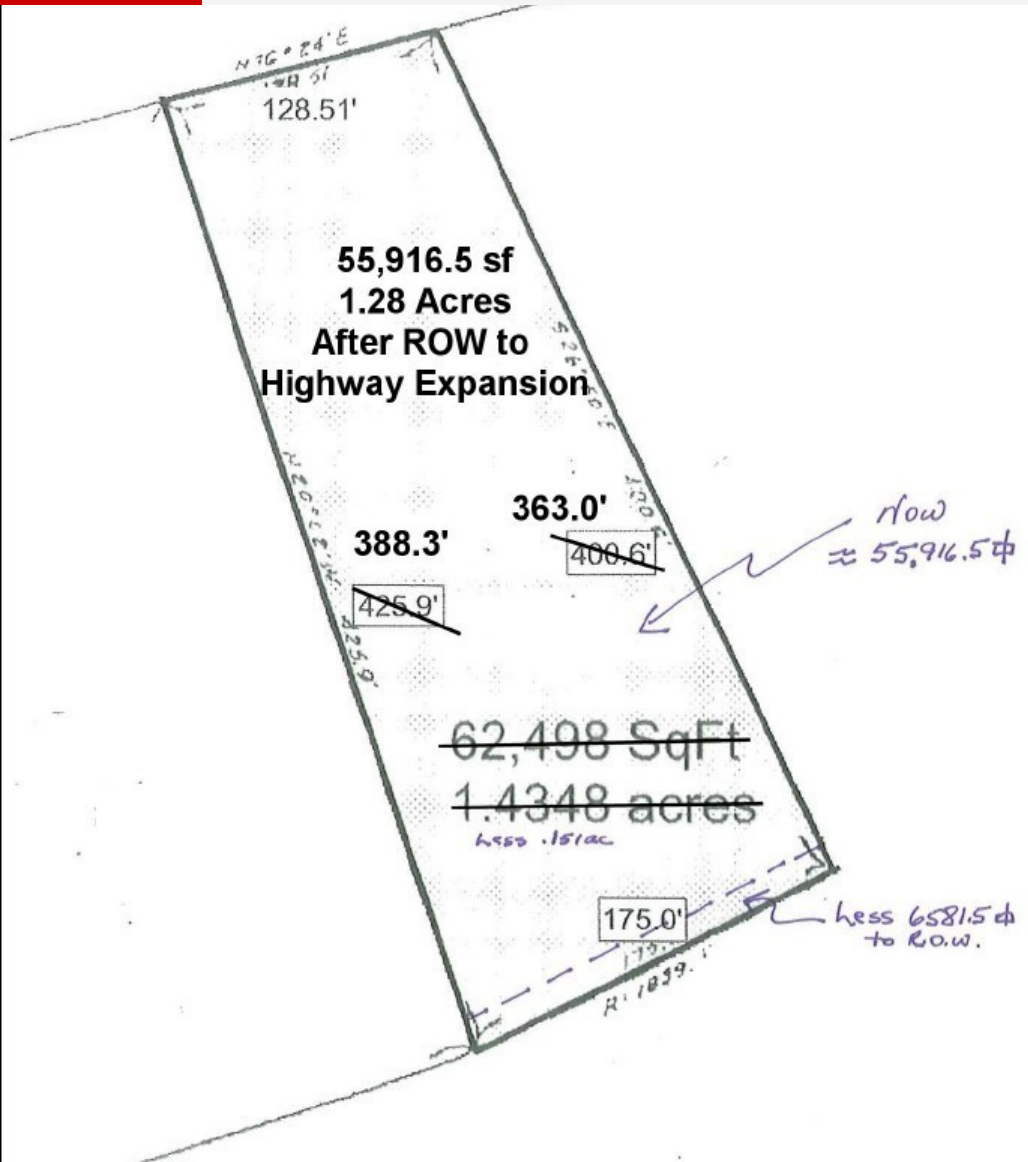
Matthew Pittman, CCIM
504.322.1275
mpittman@beaubox.com

Broker of Record, Beau J. Box; Licensed by the Louisiana Real Estate Commission, Mississippi Real Estate Commission, Alabama Real Estate Commission and Florida Real Estate Commission, USA. This information has been secured from sources we believe to be reliable, but we make no representations or warranties, expressed or implied, as to the accuracy of the information. References to square footage or age are approximate. Buyer must verify the information and bears all risk for any inaccuracies. © Beau Box Commercial Real Estate. | January 10, 2023



Development Site Highway 21 Covington, LA 70433

SURVEY



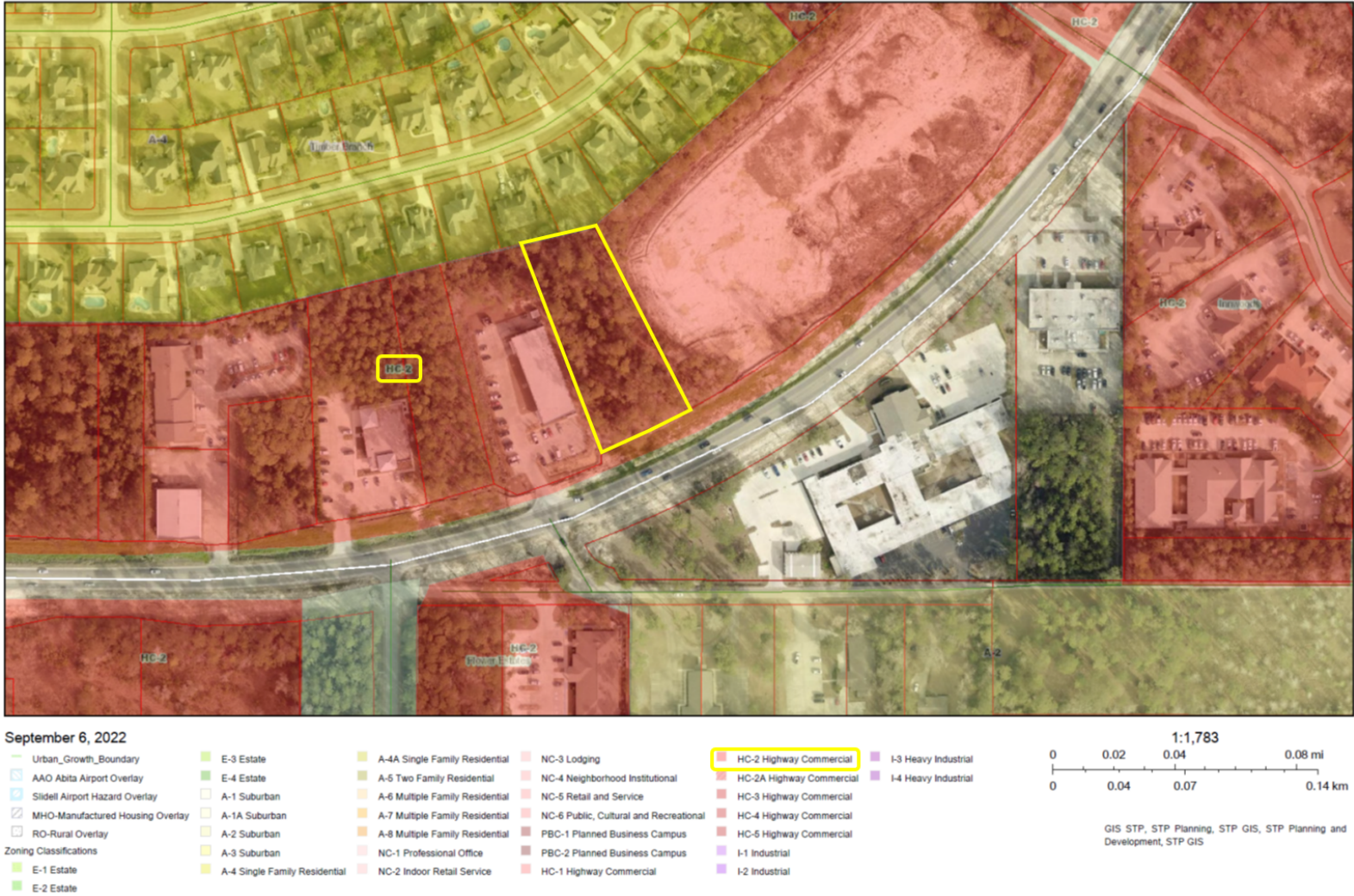
Matthew Pittman, CCIM
504.322.1275
mpittman@beaibox.com

Broker of Record, Beau J. Box; Licensed by the Louisiana Real Estate Commission, Mississippi Real Estate Commission, Alabama Real Estate Commission and Florida Real Estate Commission, USA. This information has been secured from sources we believe to be reliable, but we make no representations or warranties, expressed or implied, as to the accuracy of the information. References to square footage or age are approximate. Buyer must verify the information and bears all risk for any inaccuracies. © Beau Box Commercial Real Estate. | January 10, 2023



ZONING MAP

St. Tammany External GIS Portal



Matthew Pittman, CCIM
504.322.1275
mpittman@beaubox.com

Broker of Record, Beau J. Box; Licensed by the Louisiana Real Estate Commission, Mississippi Real Estate Commission, Alabama Real Estate Commission and Florida Real Estate Commission, USA. This information has been secured from sources we believe to be reliable, but we make no representations or warranties, expressed or implied, as to the accuracy of the information. References to square footage or age are approximate. Buyer must verify the information and bears all risk for any inaccuracies. © Beau Box Commercial Real Estate. | January 10, 2023

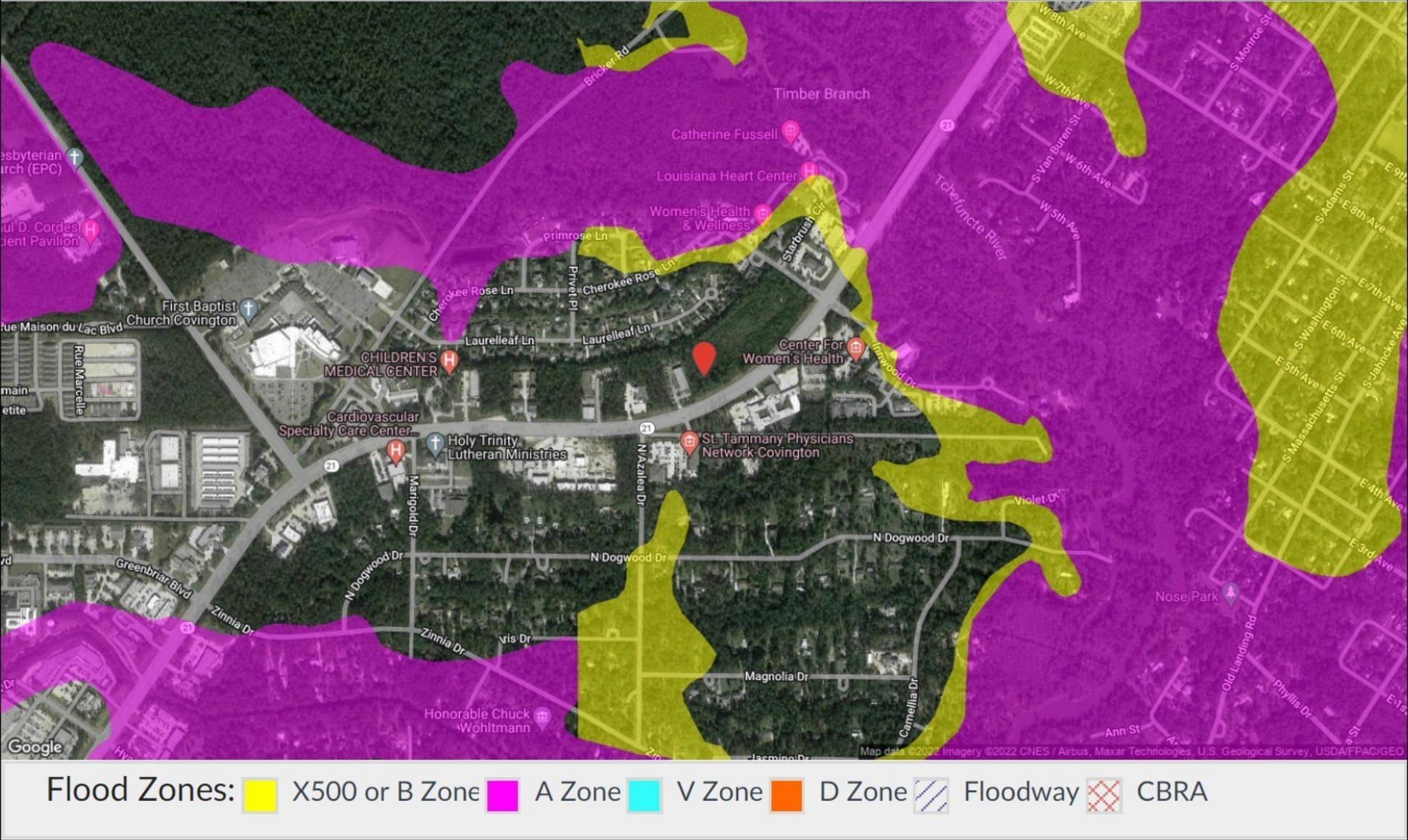




BEAU BOX
REAL ESTATE

Development Site
Highway 21 Covington, LA 70433

FLOOD MAP



Matthew Pittman, CCIM
504.322.1275
mpittman@beaubox.com

Broker of Record, Beau J. Box; Licensed by the Louisiana Real Estate Commission, Mississippi Real Estate Commission, Alabama Real Estate Commission and Florida Real Estate Commission, USA. This information has been secured from sources we believe to be reliable, but we make no representations or warranties, expressed or implied, as to the accuracy of the information. References to square footage or age are approximate. Buyer must verify the information and bears all risk for any inaccuracies. © Beau Box Commercial Real Estate. | January 10, 2023

