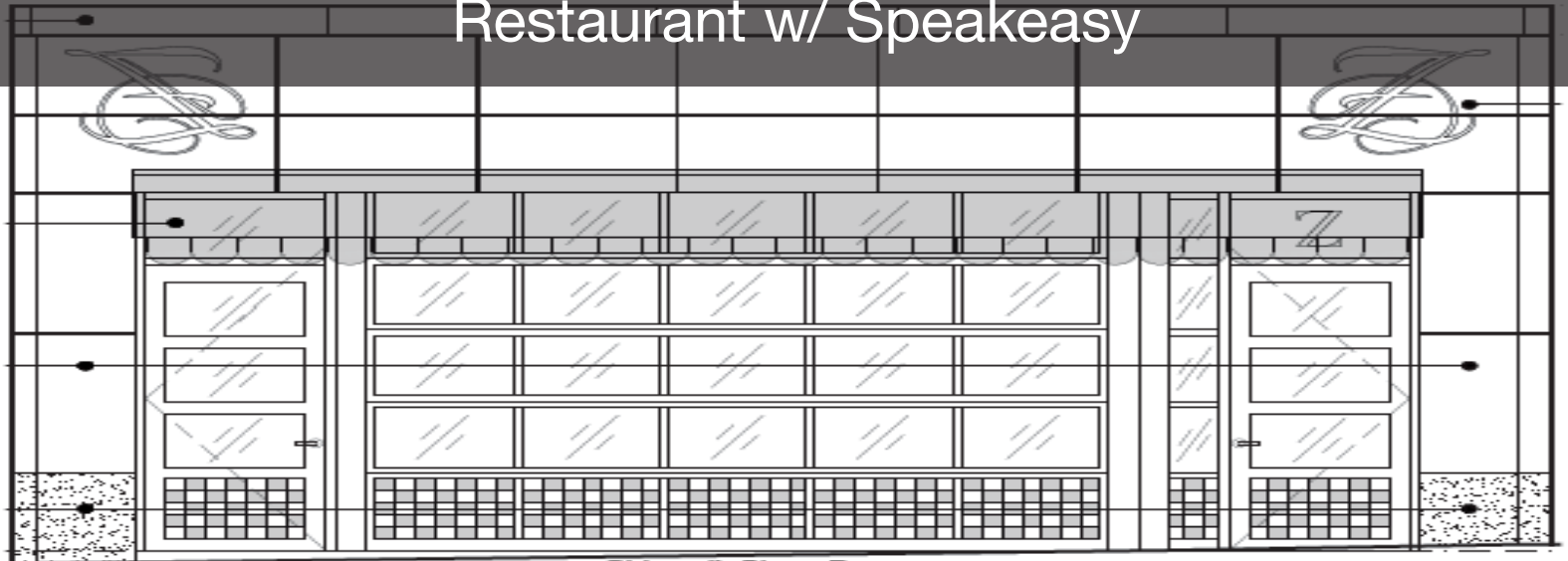


Restaurant w/ Speakeasy



833 N Market St

Wilmington, Delaware 19801

Property Features

- Renovated Historic Building
- Access and Frontage on N. Market St. & Shipley St.
- Approved for Restaurant & Speakeasy (opportunity for multiple operators w/ potential for shared kitchen)
- Street level will feature only roll-up (Raynor AlumaView® AV200) garage doors on the block for sleek sightlines and historical look.

First Floor – Restaurant

- 2,187sf
- Table Seating – 46
- Bar Seating – 11

Lower Level – Speakeasy

- 1,527sf
- Table Seating – 44
- Bar Seating – 11

Rental Rate:

First Floor: \$4,500/mo.

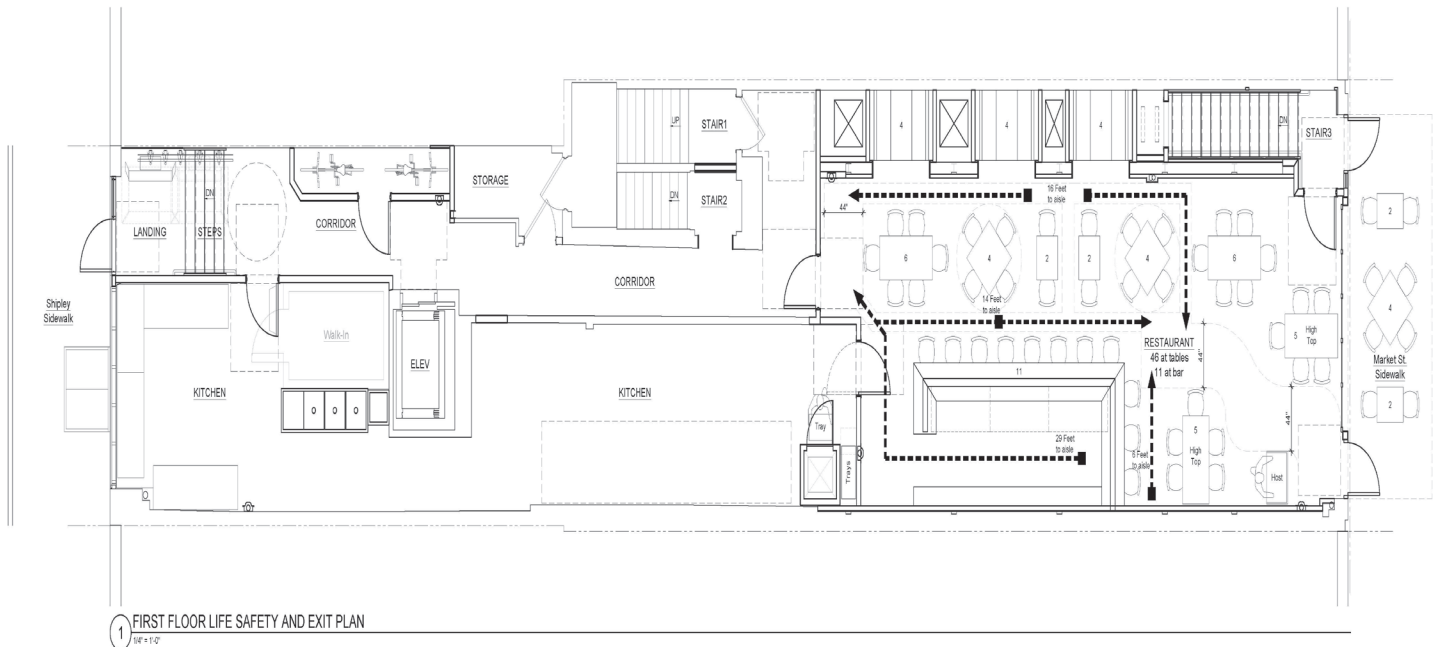
Lower Level: \$1,500/mo.

Call for sale pricing!



For more information:
Neil Kilian SIOR, CCIM
302 322 9500
302 521 7291
NeilKilian@emoryhill.com

First Floor



Lower Level

