

JAMESON.

430

PARK AVENUE | HIGHLAND PARK

1,831-4,355 SF DELUXE
OFFICE SPACE FOR LEASE

STEVEN GOLDSTEIN

SENIOR VICE PRESIDENT

312.840.9002

STEVE@CHICAGOBROKER.COM



EXECUTIVE SUMMARY



BUILDING SIZE

26,800 SF

SPACE AVAILABLE

1,831-4,155 RSF

YEAR BUILT/RENOVATED

1920 / 2012

MARKET

CHICAGO NORTH SHORE

ZONING

B-5

FOR LEASE:

\$30 MG SF/YR

PROPERTY DESCRIPTION

BOUTIQUE OFFICE BUILDING WITH SPACES READY TO GO! 1,831-4,155 RSF SUITES AVAILABLE FOR IMMEDIATE OCCUPANCY! \$9.33/FT RE TAX AND CAM. FANTASTIC NATURAL LIGHT! CLOSE TO MANY SHOPS, RESTAURANTS, AND METRA STATION. ATTENTIVE LOCAL MANAGEMENT!

AREA TENANTS

- LAO TZE CHUAN CHINESE RESTAURANT
- TAMALES
- NORTONS
- PERFECT BLEND
- SUSHI KUSHI
- CHASE BANK

JAMESON.

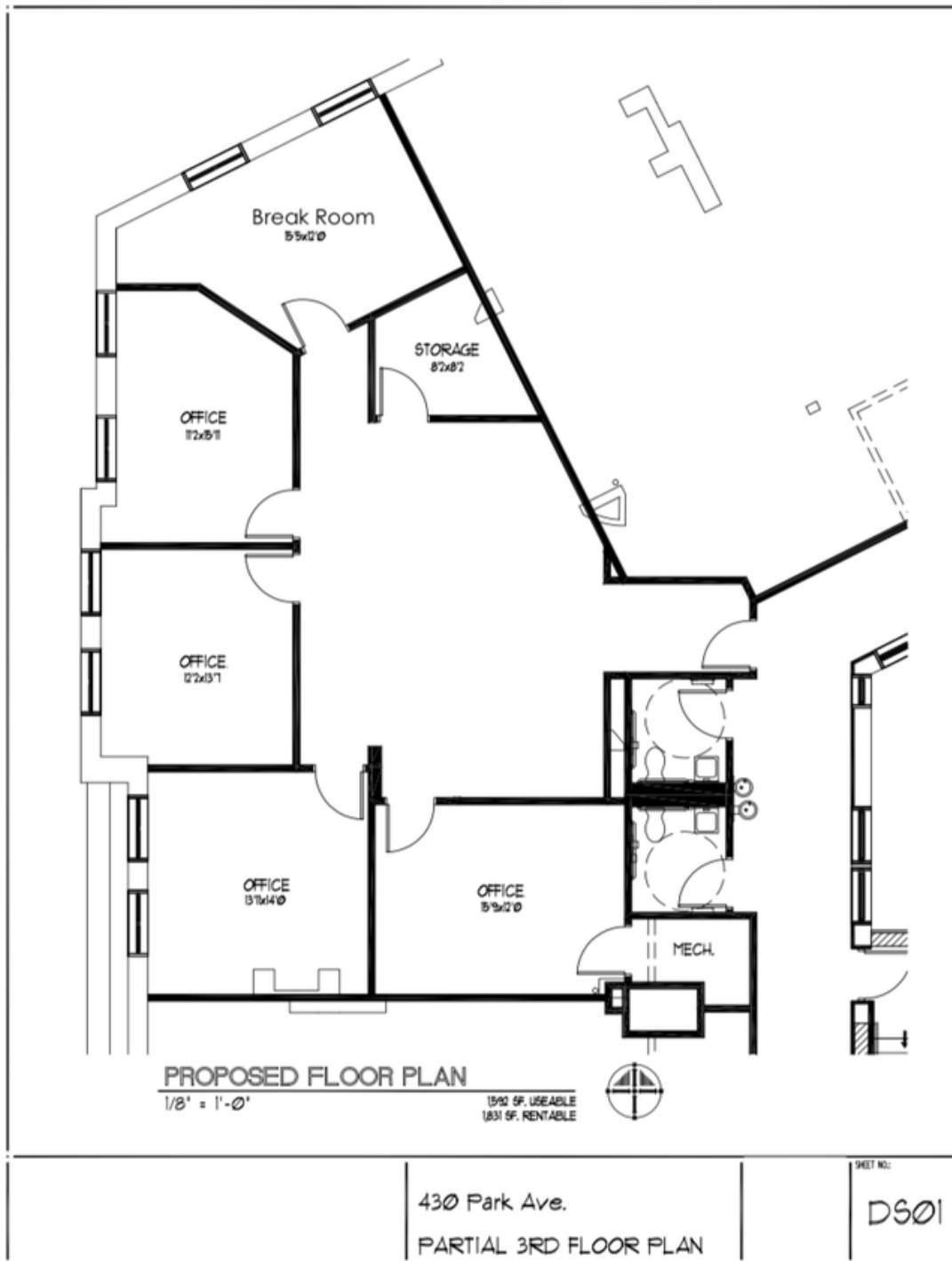
STEVEN GOLDSTEIN
SENIOR VICE PRESIDENT
312.840.9002
STEVE@CHICAGOBROKER.COM



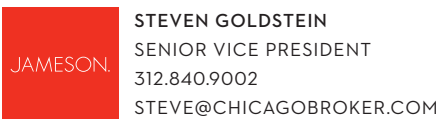
SPACE PLAN - SUITE 3B - 1,831 RSF

430 PARK AVENUE

HIGHLAND PARK, IL

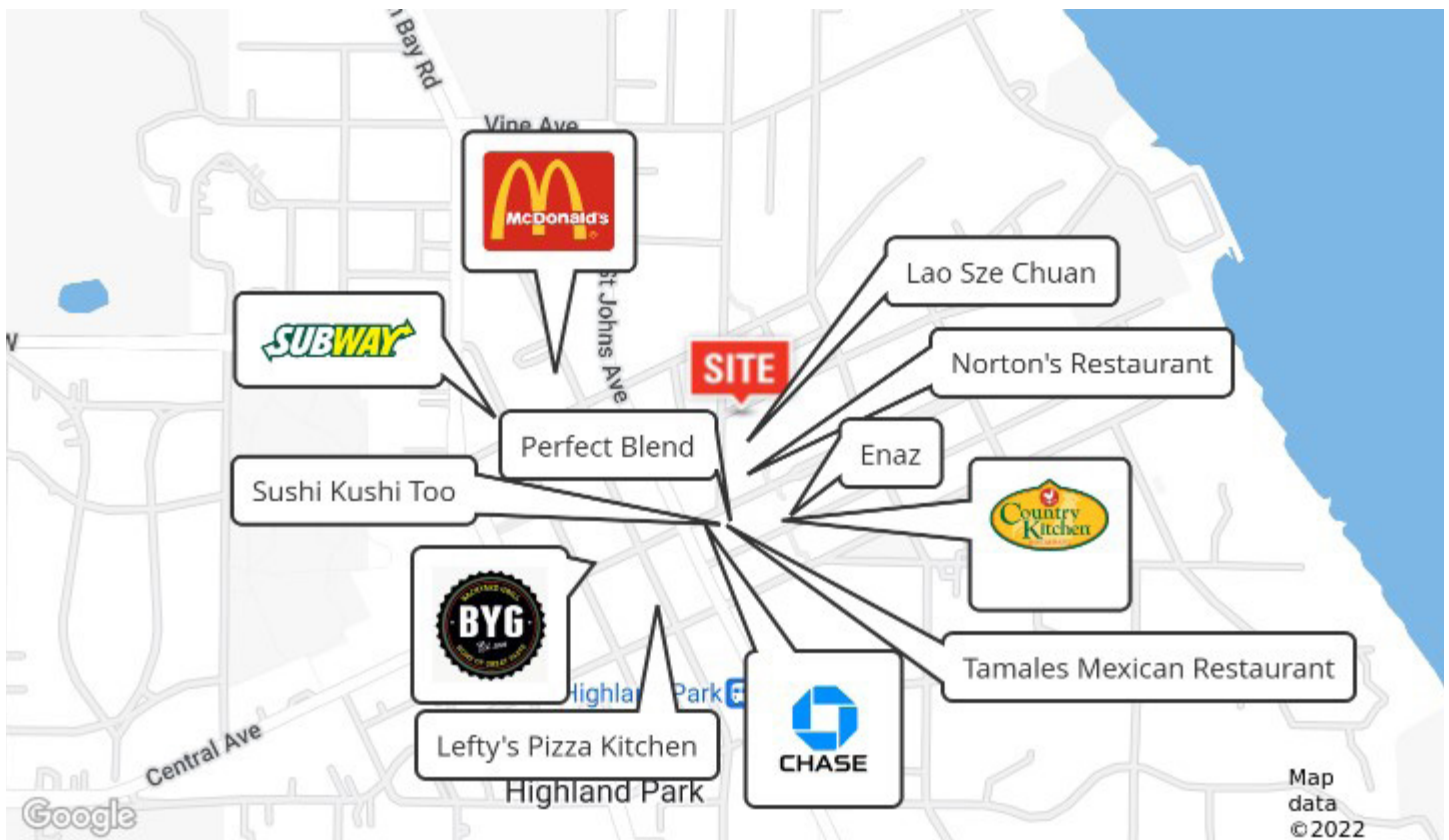


HIGHLAND PARK, IL



RETAIL MAP

430 PARK AVENUE
HIGHLAND PARK, IL



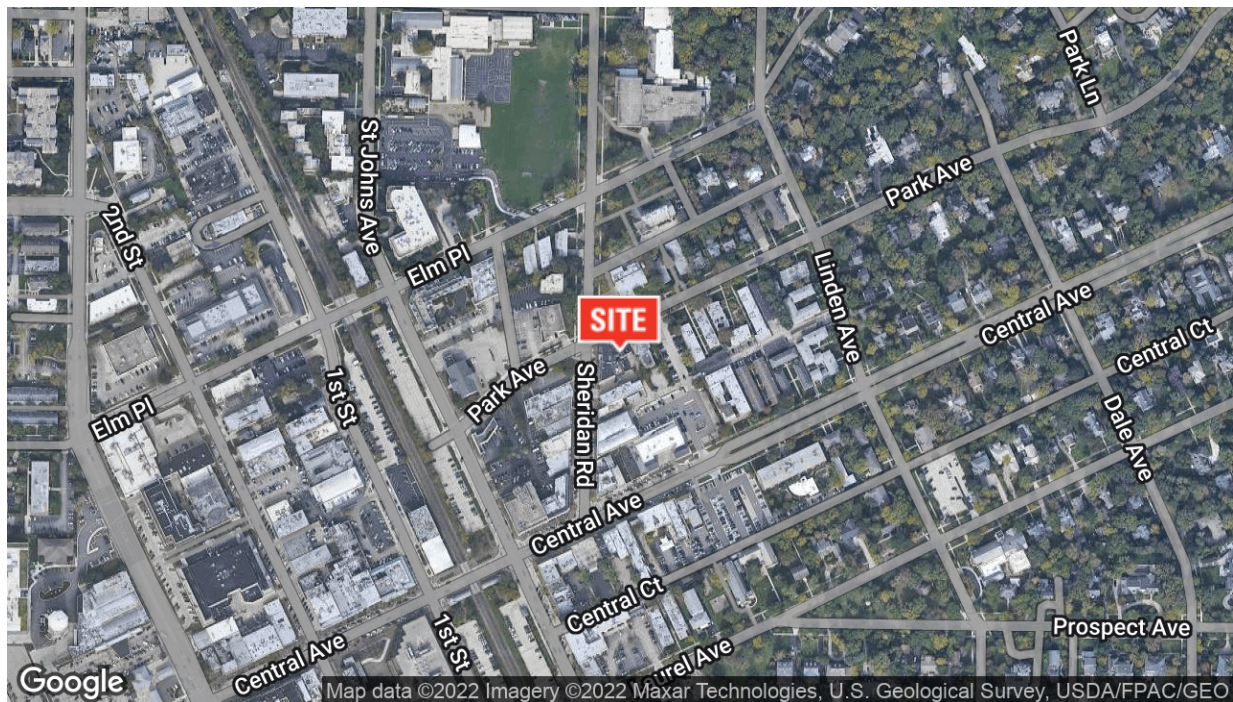
JAMESON.

STEVEN GOLDSTEIN
SENIOR VICE PRESIDENT
312.840.9002
STEVE@CHICAGOBROKER.COM

AERIAL & STREET DETAIL

430 PARK AVENUE

HIGHLAND PARK, IL



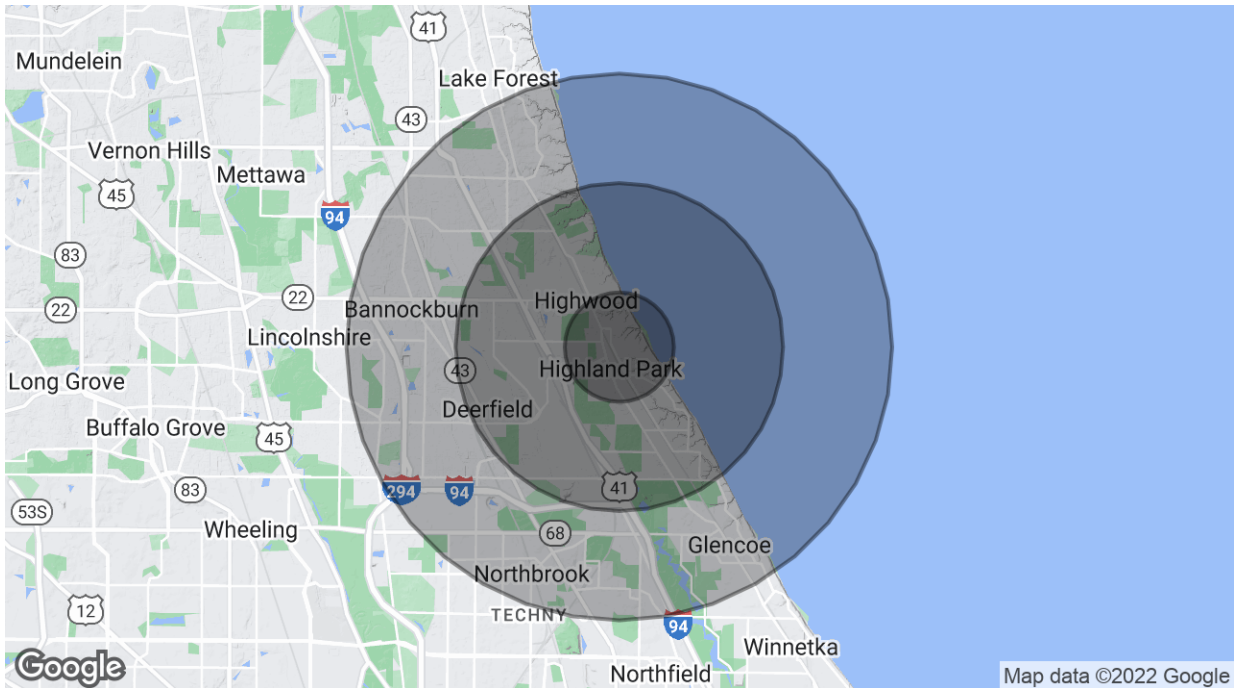
JAMESON.

STEVEN GOLDSTEIN
SENIOR VICE PRESIDENT
312.840.9002
STEVE@CHICAGOBROKER.COM

DEMOGRAPHICS MAP

430 PARK AVENUE

HIGHLAND PARK, IL



POPULATION

	1 MILE	3 MILES	5 MILES
Total Population	5,778	45,719	101,681
Average age	44.1	43.3	43.2
Average age (Male)	43.9	43.3	42.3
Average age (Female)	44.7	43.8	43.9

HOUSEHOLDS & INCOME

	1 MILE	3 MILES	5 MILES
Total households	2,346	17,112	36,818
# of persons per HH	2.5	2.7	2.8
Average HH income	\$155,748	\$159,447	\$179,251
Average house value	\$566,532	\$591,228	\$663,832

** Demographic data derived from 2020 ACS - US Census*

JAMESON.

STEVEN GOLDSTEIN
SENIOR VICE PRESIDENT
312.840.9002
STEVE@CHICAGOBROKER.COM