

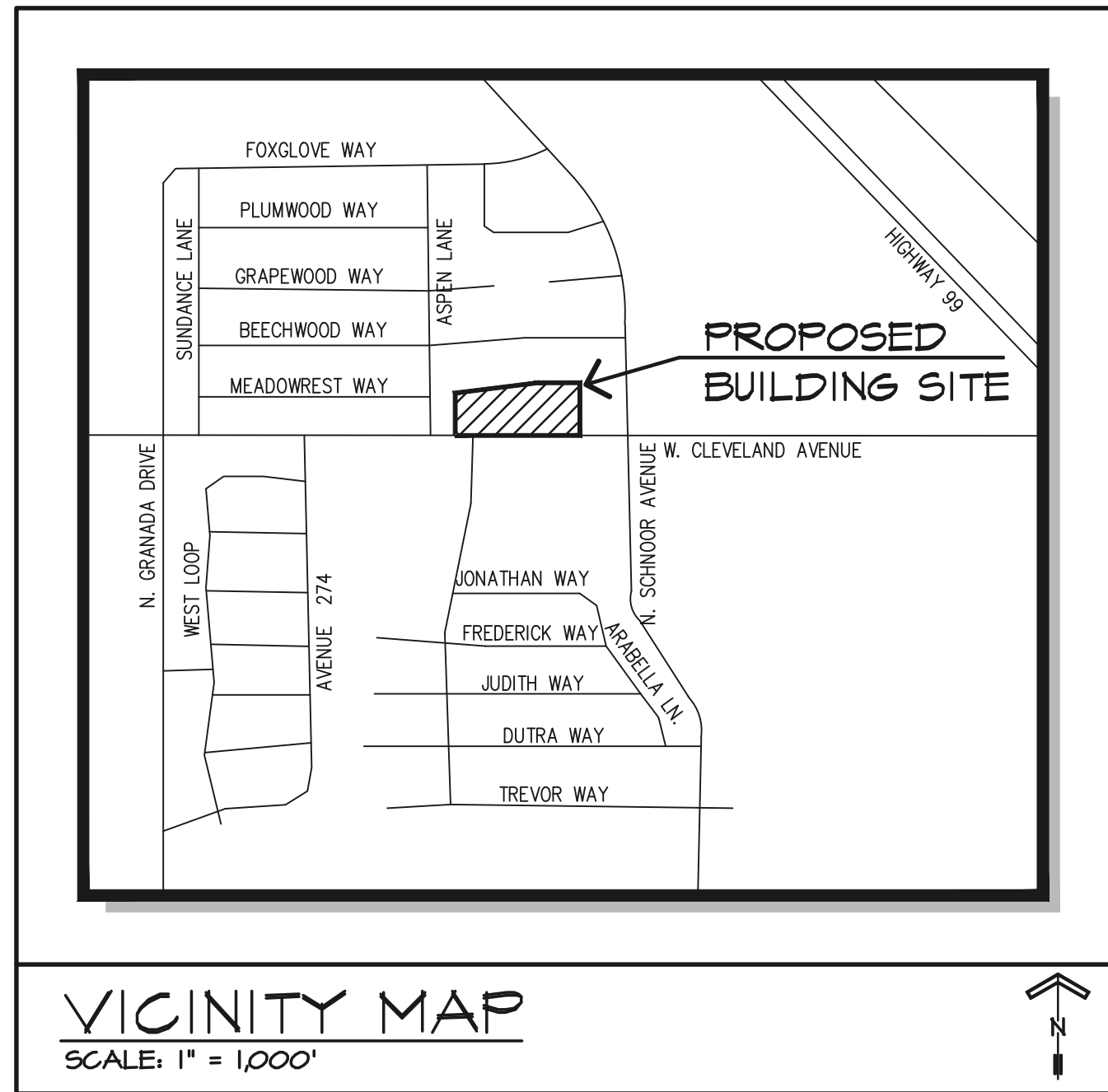
SITE NOTES :

1. MINIMUM 2% SLOPE FOR A MINIMUM OF 5' FOR DRAINAGE AWAY FROM BUILDING.
2. NO WATER SHALL DRAIN TO ADJACENT PROPERTY WITH NO ON-SITE WATER RETENTION.
3. ALL GRADINGS SHALL COMPLY WITH THE 2001 CALIFORNIA BUILDING CODE. COMPACTION REPORT SHALL BE PREPARED BY AN APPROVED TESTING AGENCY UPON COMPLETION OF GRADING.
4. PROVIDE SOIL COMPACTION FROM AN APPROVED TESTING LAB FOR ALL AREAS WHERE LOOSE FILL IS USED OR WHERE BUILDING FOOTING WILL OCCUR.
5. ANY SURVEY MONUMENTS WITHIN THE AREA OF CONSTRUCTION SHALL BE PRESERVED OR RESET BY A REG. CIVIL ENGINEER OR LICENSED LAND SURVEYOR.
6. INSTALL STREET ADDRESS NUMERALS AT LEAST SIX INCHES HIGH WITH MINIMUM 3/8-INCH STROKE MOUNTED ON A CONTRASTING BACKGROUND CLEARLY VISIBLE FROM THE STREET. ADDRESS NUMBERS SHALL HAVE PROVISIONS TO BE ILLUMINATED DURING EVENING HOURS.
7. ALL REQUIRED EXIT DOORS SHALL BE OPENABLE FROM THE INSIDE WITHOUT A KEY OR ANY SPECIAL KNOWLEDGE OR EFFORT (IBC 3304.6).
8. HIGH STRENGTH BOLTING, CONCRETE WITH F'C GREATER THAN 2500 PSI, SHOP AND FIELD WELDING MUST BE INSPECTED BY AN APPROVED INDEPENDENT INSPECTORS RETAINED BY THE OWNER. INSPECTIONS SHALL SUBMIT THEIR REPORTS DIRECTLY TO CITY OF MADERA DEV. SERVICES DIVISION.
9. FIRE HYDRANTS SHALL BE TESTED AND APPROVED FIRE ACCESS ROADS MADE SERVICEABLE PRIOR TO DELIVERY OF COMBUSTIBLE MATERIALS ON SITE. ALL CONSTRUCTION WORK ON THIS PROJECT IS SUBJECT TO A "STOP WORK ORDER" IF ACCESS ROADS BECOME IMPASSABLE OR HYDRANTS BECOME INOPERABLE.
10. A CHEMICAL TOILET IS REQUIRED TO BE ON-SITE DURING CONSTRUCTION.
11. LIGHTING WHERE PROVIDED TO ILLUMINATE PARKING, SALES OR DISPLAY AREAS SHALL BE HOODED AND SO ARRANGED AND CONTROLLED SO AS NOT TO CAUSE A NUISANCE EITHER TO HIGHWAY TRAFFIC OR TO THE LIVING ENVIRONMENT. THE AMOUNT OF LIGHT SHALL BE PROVIDED ACCORDING TO THE STANDARDS OF THE DEPARTMENT OF PUBLIC WORKS.
12. THIS PROJECT HAS BEEN DESIGNED WITH A UNIFORM LOAD OF 2.0 POUNDS/S.F. TO SUPPORT A FUTURE FIRE SPRINKLER SYSTEM. ADDITIONALLY, I HAVE DESIGNED THE MAIN SUPPORT MEMBERS (PURLINS, FRAMES, JOIST, ETC.) TO SUPPORT CONCENTRATED LOADS OF LARGER SPRINKLER LINES.
13. ANY WORK TO BE PERFORMED WITHIN THE CITY RIGHT-OF-WAY WILL REQUIRE AN ENCROACHMENT PERMIT FROM THE ENGINEERING DEPARTMENT. THE WORK TO BE DONE WITHIN THE RIGHT-OF-WAY MUST BE COMPLETED PRIOR TO RECEIVING AN OCCUPANCY PERMIT. ANY EXISTING IMPROVEMENTS THAT ARE DAMAGED DURING THE CONSTRUCTION PROCESS, DELIVERY OF MATERIALS OR BY ANY OTHER MEANS, MUST BE REPAIRED PRIOR TO OCCUPANCY. CONTACT THE ENGINEERING DEPARTMENT.
14. ALL GATES SHALL HAVE FIRE DEPARTMENT APPROVED LOCKS OR MEANS OF ACCESS FOR EMERGENCY VEHICLES.

SIGNED ENGINEER LIG. #2663

ACCESSIBILITY NOTES :

1. AT LEAST ONE ACCESSIBLE ROUTE SHALL BE PROVIDED WITHIN THE SITE FROM ACCESSIBLE PARKING SPACES AND ACCESSIBLE PASSENGER LOADING ZONES, PUBLIC STREETS AND SIDEWALKS, AND PUBLIC TRANSPORTATION STOPS TO THE ACCESSIBLE BUILDING OR FACILITY ENTRANCE THEY SERVE. WHERE MORE THAN ONE ROUTE IS PROVIDED, ALL ROUTES MUST BE ACCESSIBLE (2013 CBC IIB-206.2.1).
2. AT LEAST ONE ACCESSIBLE ROUTE SHALL CONNECT ACCESSIBLE BUILDINGS, ACCESSIBLE FACILITIES, ACCESSIBLE ELEMENTS, AND ACCESSIBLE SPACES THAT ARE ON THE SAME SITE, UNLESS THE ONLY MEANS OF ACCESS BETWEEN THEM IS A VEHICULAR WAY NOT PROVIDING PEDESTRIAN ACCESS. (2013 CBC IIB-206.2.2)
3. ACCESSIBLE ROUTES SHALL COINCIDE WITH OR BE LOCATED IN THE SAME AREA AS GENERAL CIRCULATION PATHS, WHERE CIRCULATION PATHS ARE INTERIOR, REQUIRED ACCESSIBLE ROUTES SHALL ALSO BE INTERIOR. (2013 CBC IIB-206.3)
4. DIRECTIONAL SIGNS COMPLYING W/ 2013 CBC SECTION IIB-103.5, INCLUDING THE INTERNATIONAL SYMBOL OF ACCESSIBILITY COMPLYING W/ 2013 CBC SECTION IIB-103.5.1, INDICATES THE ACCESSIBLE ROUTE TO THE NEAREST ACCESSIBLE ENTRANCE SHALL PROVIDED AT JUNCTIONS WHEN THE ACCESSIBLE ROUTE DIVERGES FROM THE REGULAR CIRCULATION PATH (2013 CBC SECTION IIB-216.6)
5. THE RUNNING SLOPE OF WALKING SURFACES SHALL NOT BE STEEPER THAN 1:20 (5%). THE CROSS SLOPE OF WALKING SURFACES SHALL NOT BE STEEPER THAN 1:48 (2%). WHEN THE SLOPE OF ANY WALKING SURFACE EXCEEDS 1:20 (5%), IT SHALL COMPLY WITH THE PROVISIONS OF 2013 CBC SECTION IIB-405. (2013 CBC SECTION IIB-403.3)
6. THE RUNNING SLOPE OF CURB RAMPS SHALL NOT BE STEEPER THAN 1:12 (8.33%) THE RUNNING SLOPE OF BLENDED TRANSITIONS SHALL NOT BE STEEPER THAN 1:20 (5%). THE CROSS SLOPE OF CURB RAMPS AND BLENDED TRANSITIONS SHALL BE 1:48 (2%) MAX. (2013 CBC SECTION IIB-406.2.1, IIB-406.3.1, IIB-406.4.1 AND IIB-406.5.1)
7. THE SURFACE OF EACH CURB RAMP AND ITS FLARED SIDES, WHERE APPLICABLE, SHALL COMPLY WITH 2013 CBC SECTION IIB-302, FLOOR AND GROUND SURFACES, IIB-405.4 AND IIB-405.10. (2013 CBC SECTION IIB-406.5.4 AND IIB-406.5.5)
8. ALL CURB RAMPS SHALL HAVE A GROOVED BORDER 12 INCHES WIDE ALONG THE TOP OF THE CURB RAMP AT THE LEVEL SURFACE OF THE TOP LANDING AND AT THE OUTSIDE EDGES OF THE FLARED SIDES. THE GROOVED BORDER SHALL CONSIST OF A SERIES OF GROOVES 1/4 INCH WIDE BY 1/4 INCH DEEP AT 3/4 INCH O.C. (2013 CBC SECTION IIB-406.5.11)
9. DETECTABLE WARNINGS AT CURB RAMPS SHALL EXTEND 36 INCHES IN THE DIRECTION OF TRAVEL AND SHALL EXTEND THE FULL WIDTH OF THE RAMP RUN, EXCLUDING ANY FLARED SIDES AND BE LOCATED SO THE EDGE NEAREST THE CURB IS 6 INCHES MIN. AND 8 INCHES MAX. FROM THE LINE AT THE FACE OF THE CURB MARKING THE TRANSITION BETWEEN THE CURB AND GUTTER, STREET OR HIGHWAY. ON PARALLEL CURB RAMPS, DETECTABLE WARNINGS SHALL BE PLACED ON THE TURNING SPACE AT THE FLUSH TRANSITION BETWEEN STREET AND SIDEWALK. DETECTABLE WARNINGS SHALL CONSIST OF RAISED TRUNCATED DOMES PER 2013 CBC SECTION IIB-105.1.1 AND FIGURE IIB-105.1, AND SHALL CONTRAST VISUALLY WITH ADJACENT WALKING SURFACES (2013 CBC SECTION IIB-406.5.2, IIB-105.1.1.3, AND IIB-105.1.2.2)
10. ACCESSIBLE PARKING SPACES SERVING A PARTICULAR BUILDING OR FACILITY SHALL BE LOCATED ON THE SHORTEST ACCESSIBLE ROUTE FROM PARKING TO AN ACCESSIBLE ENTRANCE. (2013 CBC SECTION IIB-208.3.1)
11. PROVIDE THE APPROPRIATE NUMBER OF ACCESSIBLE PARKING SPACES AS REQUIRED BY 2013 CBC TABLE IIB-208.2.
12. ONE IN EVERY SIX ACCESSIBLE PARKING SPACES, BUT NOT LESS THAN ONE, SHALL BE SERVED BY AN ACCESS AISLE 46 INCHES WIDE MINIMUM PLACED ON THE SIDE OPPOSITE THE DRIVERS SIDE WHEN THE VEHICLE IS GOING FORWARD INTO THE PARKING SPACE AND SHALL BE DESIGNATED VAN ACCESSIBLE AS REQUIRED BY 2013 CBC SECTION IIB-502 (2013 CBC SECTION IIB-208.2.4)
13. PARKING SPACES AND ACCESS AISLES SHALL BE DESIGNED SO THAT PERSONS USING THEM ARE NOT REQUIRED TO TRAVEL BEHIND PARKING SPACES OTHER THAN TO PASS BEHIND THE PARKING SPACE IN WHICH THEY PARKED. (2013 CBC SECTION IIB-502.7.1)
14. THE MAXIMUM CROSS SLOPE IN ANY DIRECTION OF AN ACCESSIBLE PARKING SPACE OR THE ADJACENT ACCESS AISLE SHALL NOT EXCEED 1:48 (2%). (2013 CBC SECTION IIB-502.4)
15. PROVIDE THE FOLLOWING INFORMATION FOR ACCESSIBLE PARKING :
  - A. EACH PARKING SPACE RESERVED FOR PERSONS WITH DISABILITIES SHALL BE IDENTIFIED BY A REFLECTORIZED SIGN PERMANENTLY POSTED IMMEDIATELY ADJACENT TO THE PARKING SPACE OR WITHIN THE PROJECTED PARKING SPACE WIDTH AT THE HEAD END OF THE PARKING SPACE OR PERMANENTLY POSTED ON A WALL AT THE INTERIOR END OF THE PARKING SPACE CONSISTING OF THE INTERNATIONAL SYMBOL OF ACCESSIBILITY. ADDITIONAL LANGUAGE OR AND ADDITIONAL SIGN BELOW THE INTERNATIONAL SYMBOL OF ACCESSIBILITY SHALL STATE "MINIMUM FINE \$250". SIGNS SHALL BE 60 INCHES MIN. ABOVE THE FINISH FLOOR OR GROUND SURFACE MEASURED TO THE BOTTOM OF THE SIGN. SIGNS LOCATED WITHIN AN ACCESSIBLE ROUTE SHALL BE A MIN. OF 80 INCHES ABOVE THE FINISH FLOOR OR GROUND SURFACE MEASURED TO THE BOTTOM OF THE SIGN. (2013 CBC SECTION IIB-502.6)
  - B. THE SURFACE OF EACH ACCESSIBLE STALL SHALL HAVE A SURFACE IDENTIFICATION COMPLYING WITH EITHER 201 CBC SECTION IIB-502.6.4.1 OR IIB-502.6.4.2 (2013 CBC SECTION IIB-502.6.4)
  - C. AN APPROVED SIGN TO BE POSTED IN CONSPICUOUS PLACE AT EACH ENTRANCE TO THE OFF-STREET PARKING FACILITY OR IMMEDIATELY ADJACENT TO ON-SITE ACCESSIBLE PARKING AND VISIBLE FROM EA. PARKING SPACE WHICH DISPLAYS THE TOW-AWAY WARNING PER 2013 CBC SECTION IIB-502.8.2. (2013 CBC SECTION 502.8)
16. THRESHOLDS, IF PROVIDED AT DOORWAYS, SHALL BE 1/2 INCH HIGH MAX. CHANGE IN LEVEL BETWEEN 1/4 INCH HIGH MIN. AND 1/2 INCH HIGH MAX. SHALL BE BEVELED WITH A SLOPE NOT STEEPER THAN 1:2 (50%). CHANGE IN LEVEL GREATER THAN 1/2 INCH HIGH SHALL BE RAMPED, AND SHALL COMPLY WITH 2013 CBC SECTION IIB-405 OR IIB-406. (2013 CBC SECTION IIB-404.2.5 AND IIB-309)



No.	Issue/Revision	Date
1	PLAN CHECK	04/16/15

Date	04/16/15
Scale	1"=30'-0"
Dr. By	J. JAIME
Job No.	2014.174
Dwg. No.	14174MSD
Sheet	A-1
Revision No.	