

FOR LEASE

1881 - A NORTH M L KING JR BLVD, TALLAHASSEE, FL 32303

NAI TALCOR

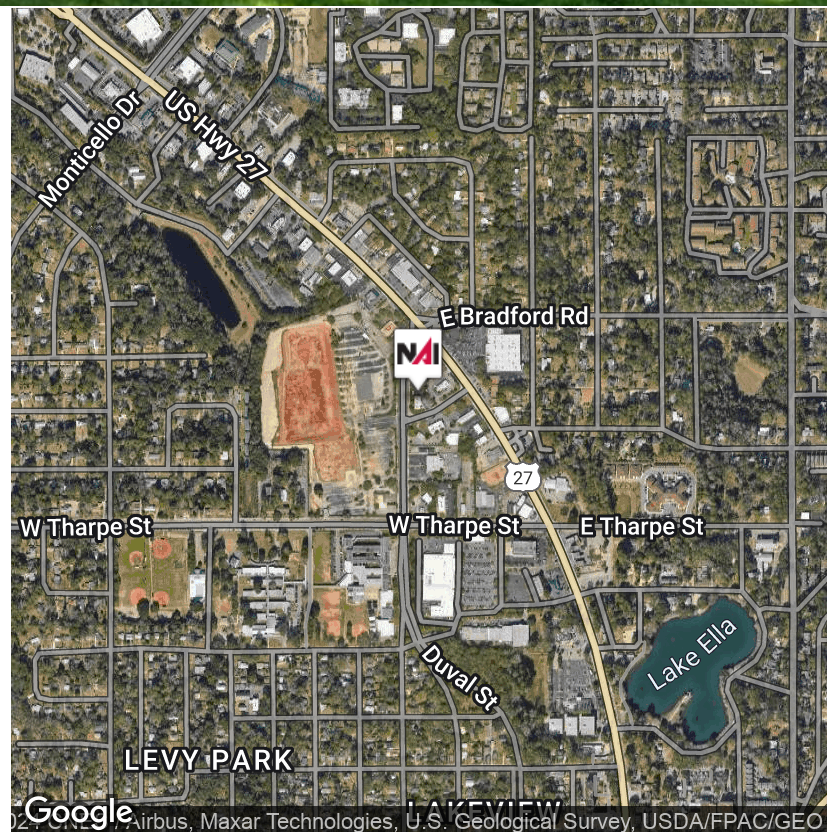


OFFICE | 1,270 SF

1,270 SF building previously used and set up as a medical facility. The property is in Activity Center Zoning allowing for all types of commercial uses including retail, office and more!

- Great Location In the new Northwood Development in Midtown Tallahassee.
- Perfect for medical or other office uses with ample parking
- Zoned Activity Center:
- Uses allowed in Activity Center Zoning (1) Minor Commercial, (2) Neighborhood Commercial, (3) Community Commercial (4) Regional Commercial, (5) Highway Commercial, (6) Minor or major Office, 7 Light / minor Industrial

Lease Rate: \$2,500.00/Month
+ Utilities/ Janitorial



✉ **Kee Elwell, CCIM**
+1 850 509 5242
kee@talcorm.com

No Warranty Or Representation, Express Or Implied, Is Made As To The Accuracy Of The Information Contained Herein, And The Same Is Submitted Subject To Errors, Omissions, Change Of Price, Rental Or Other Conditions, Prior Sale, Lease Or Financing, Or Withdrawal Without Notice, And Of Any Special Listing Conditions Imposed By Our Principals No Warranties Or Representations Are Made As To The Condition Of The Property Or Any Hazards Contained Therein Are Any To Be Implied.

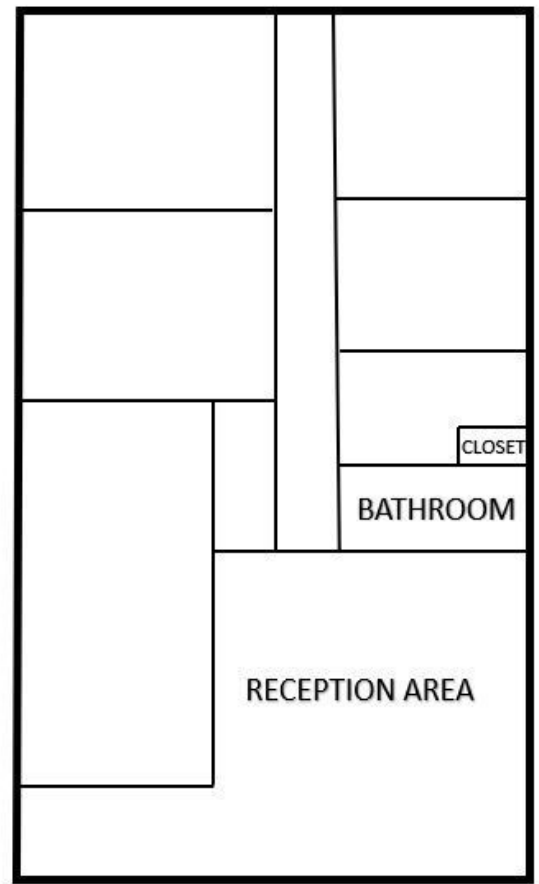


NAI TALCOR

1018 Thomasville Road, Suite 200A
talcorm.com

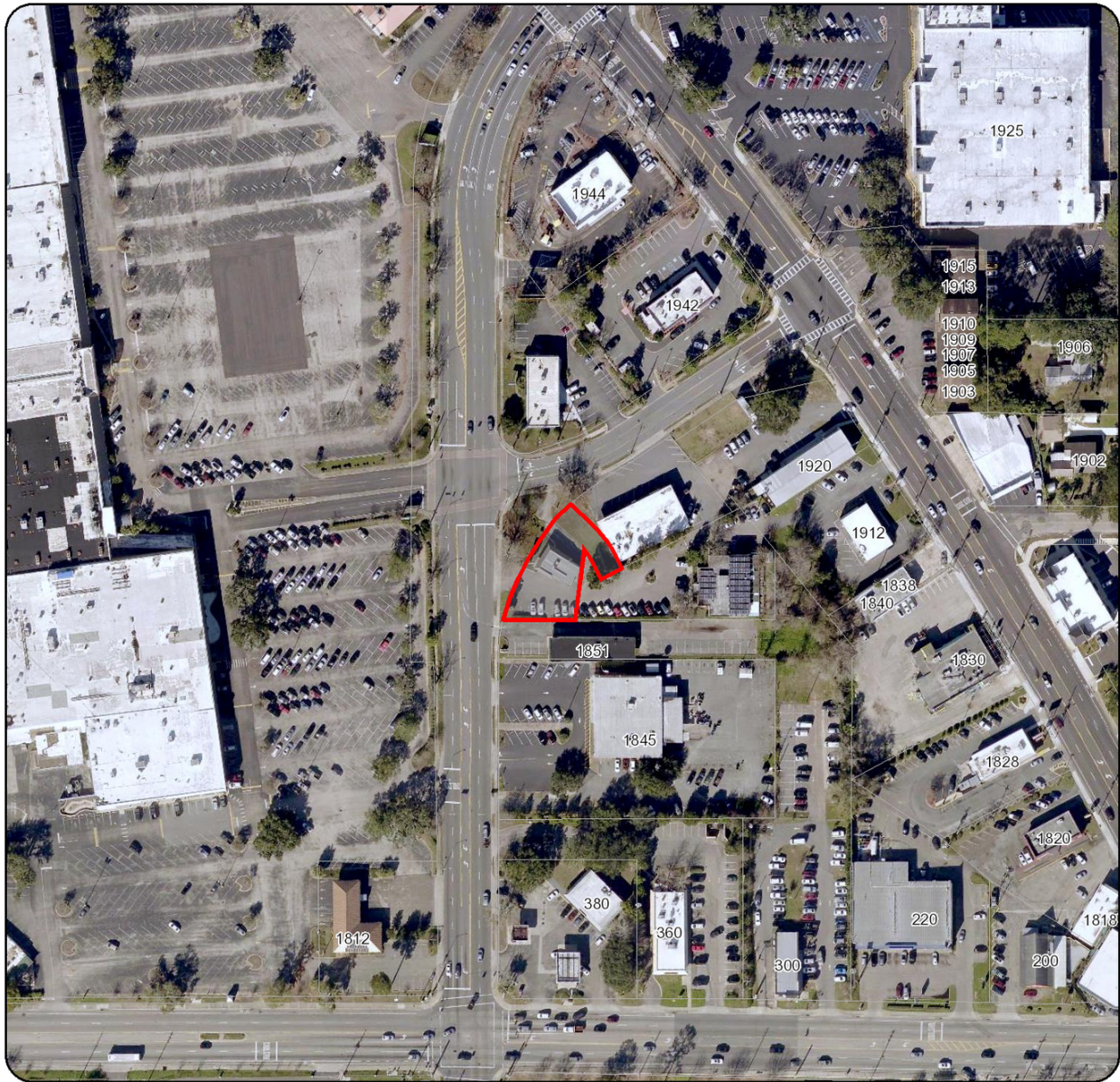
FOR LEASE

1881- A North ML KING JR BLVD Tallahassee, FL 32303

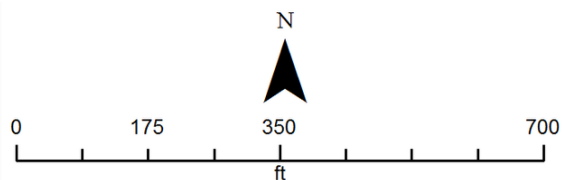
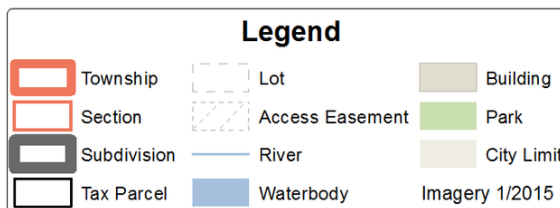


FOR LEASE

1881- A North ML KING JR BLVD Tallahassee, FL 32303



2124206010000



Akin Akinyemi, R.A.
Leon County Property Appraiser

315 S. Calhoun St, Third Floor
Tallahassee, FL 32301

Phone: (850) 606-6200
Fax: (850) 606-6201

Email: admin@leonpa.org
Website: leonpa.org

DISCLAIMER: This product has been compiled from the most accurate source data from Leon County, the City of Tallahassee, and the Leon County Property Appraiser's Office. However, this product is for reference purposes only and is not to be construed as a legal document or survey instrument. Any reliance on the information contained herein is at the user's own risk. Leon County, the City of Tallahassee, and the Leon County Property Appraiser's Office assume no responsibility for any use of the information contained herein or any loss resulting therefrom.

Date Drawn: Sep 22, 2022

FOR LEASE

1881 N M L KING JR BLVD- A Tallahassee, FL 32303



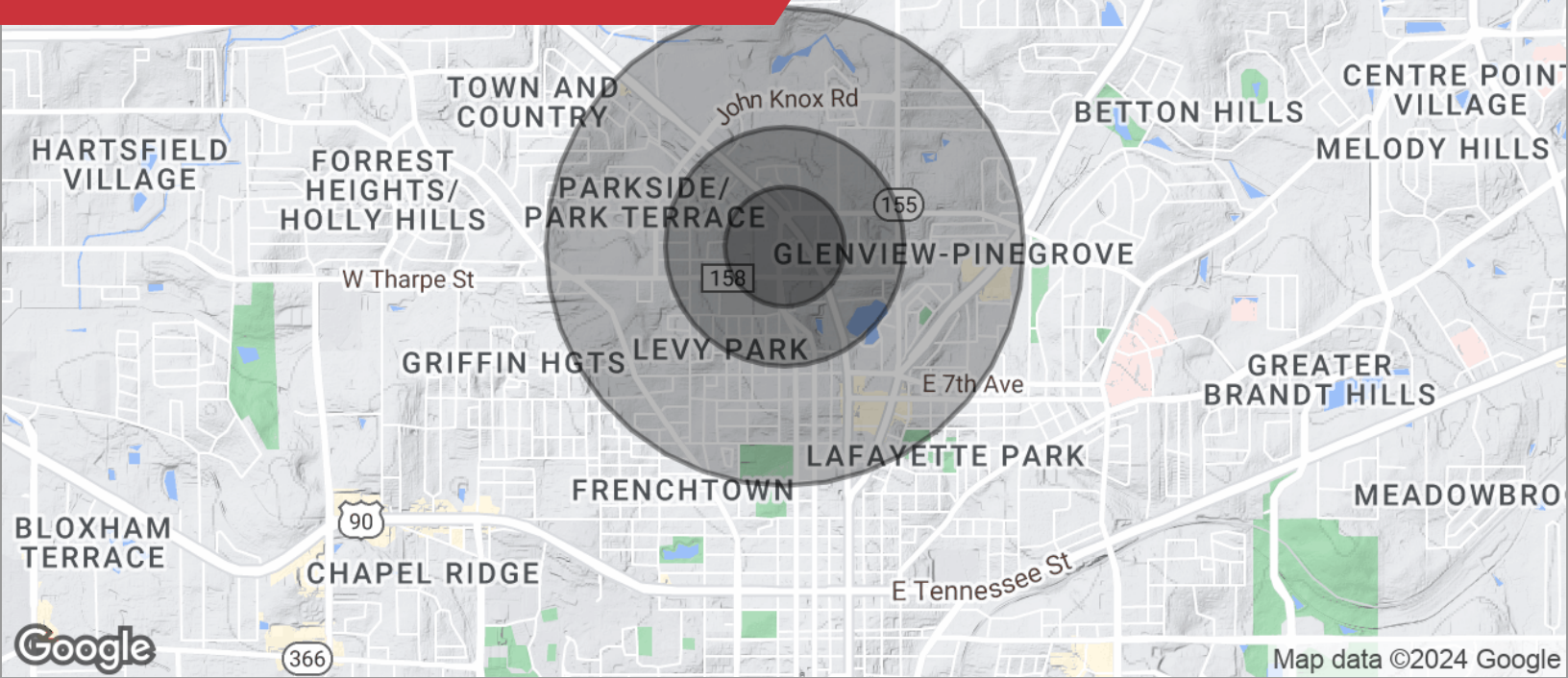
✉ **Kee Elwell, CCIM**
+1 850 509 5242
kee@talcor.com

No Warranty Or Representation, Express Or Implied, Is Made As To The Accuracy Of The Information Contained Herein, And The Same Is Submitted Subject To Errors, Omissions, Change Of Price, Rental Or Other Conditions, Prior Sale, Lease Or Financing, Or Withdrawal Without Notice, And Of Any Special Listing Conditions Imposed By Our Principals No Warranties Or Representations Are Made As To The Condition Of The Property Or Any Hazards Contained Therein Are Any To Be Implied.

NAITALCOR

FOR LEASE

1881 N M L KING JR BLVD- A Tallahassee, FL 32303



DEMOGRAPHICS

POPULATION	0.25 MILES	0.5 MILES	1 MILE
Total population	480	2,659	14,198
Median age	30.3	33.0	32.5
Median age (male)	33.4	34.8	32.7
Median age (Female)	25.3	31.0	33.4
HOUSEHOLDS & INCOME	0.25 MILES	0.5 MILES	1 MILE
Total households	296	1,509	6,673
# of persons per HH	1.6	1.8	2.1
Average HH income	\$76,691	\$58,099	\$52,725
Average house value	\$703,379	\$446,286	\$256,717

* Demographic data derived from 2020 ACS - US Census