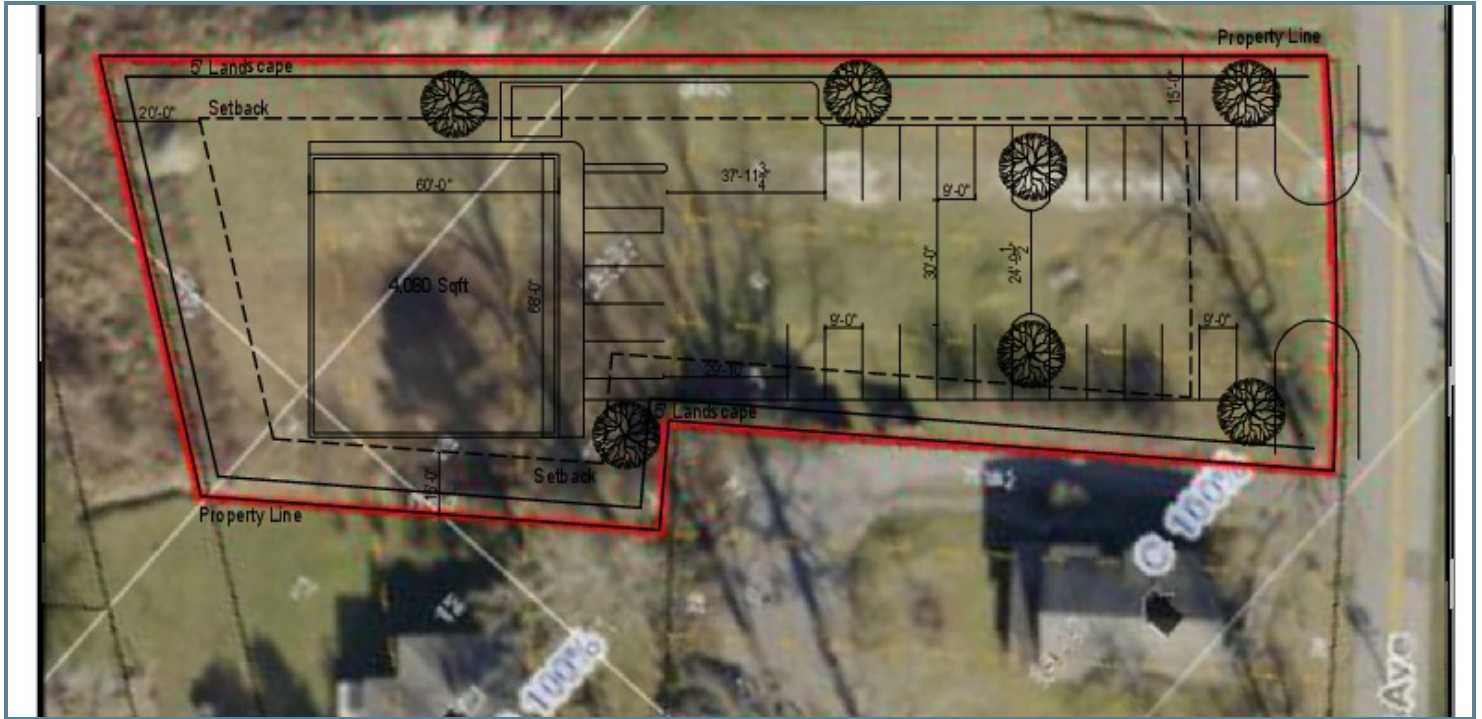


# 208 CHADWICK AVE.

208 CHADWICK AVE., HENDERSONVILLE, NC 28792

## PROPERTY SUMMARY

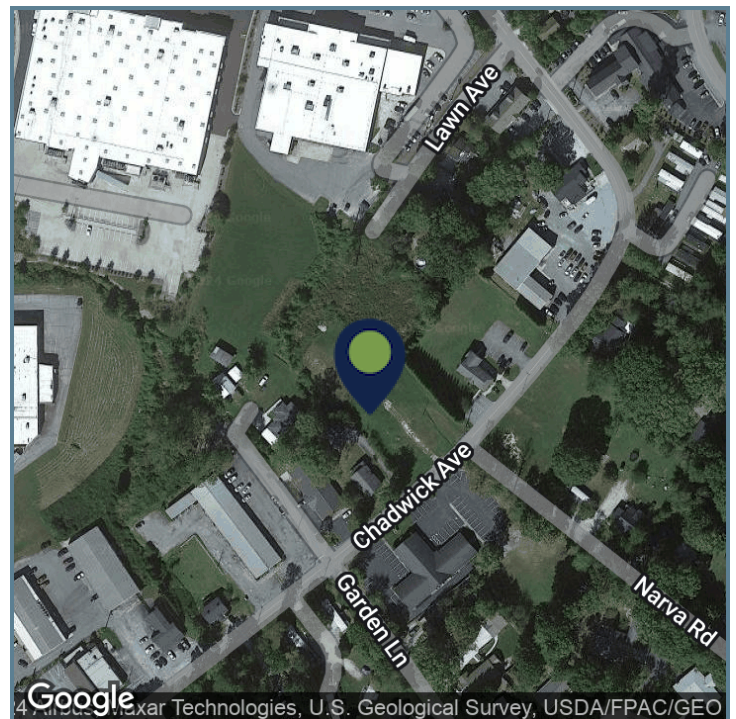


## PROPERTY DESCRIPTION

This 4,080 SF new build is available for lease in Hendersonville, NC. This 0.66 Acre lot is situated on a high-traffic location that sees over 15,000 vehicles per day between Chadwick Ave and Garden Ln. Hendersonville's average household income within a 1mi radius of this location is \$41,185. Don't miss this opportunity to position your business in this brand new building coming in 2023 in a booming SW city south of Asheville.

## PROPERTY HIGHLIGHTS

DEMOGRAPHICS	0.5 MILES	1 MILE	1.5 MILES
Total Households	717	2,791	5,243
Total Population	1,498	5,587	10,182
Average HH Income	\$47,960	\$44,580	\$47,789



Presented By:

Legacy Commercial Property

847-904-9000

info@legacypro.com



# 208 CHADWICK AVE.

208 CHADWICK AVE., HENDERSONVILLE, NC 28792

## RETAILER MAP



Presented By:

Legacy Commercial Property

847-904-9000

info@legacypro.com



**LEGACY**  
COMMERCIAL PROPERTY

209 Powell Place  
Brentwood, TN 37027  
<http://legacypro.com>