

SMALL BAY INDUSTRIAL FLEX SPACE

Small Bay Industrial Flex Space • 1865 Canova Street Palm Bay , FL 32909



OFFERING SUMMARY

Available SF: 6,040 SF

Lease Rate: \$12/Sf/Yr

Lot Size: 0.51 Acres

Building Size: 6,040 SF

Market: Industrial

Submarket: Light manufacturing

PROPERTY OVERVIEW

Within one mile of I-95 right off of Malabar Rd and Babcock Street in Palm Bay, 1865 Canova St is a newly renovated 6,000sf flex space building perfect for light manufacturing and distribution or great warehouse/shop space for prospective tenants. The building features three bay doors, brand new lighting, updated flooring and remodeled office space, and more. Sitting on a half acre, the space includes plenty of fenced in yard space and easy access from both sides of the street. Landlord is looking for a minimum lease term of 3 years and a desired term of 5 years at \$12.00/sf (MG).

PROPERTY HIGHLIGHTS

- 6,040sf Completely Renovated lighting/flooring/etc
- Three bay doors
- New office space
- .51 acre lot with fenced yard space
- \$12/sf/Yr Modified Gross
- 12' Clear Height

MIKE MOSS, SIOR

Principal | Industrial Team Director
321.543.2498
mike@teamlbr.com

Lightle Beckner Robison, Inc.

321.722.0707 • teamlbr.com
70 W. Hibiscus Blvd.,
Melbourne, FL 32901

Information contained herein has been obtained through sources deemed reliable but cannot be guaranteed as to its accuracy. A purchaser or lessee is expected to verify all information to his/her own satisfaction. Zoning information subject to change and not warranted. Always confirm current requirements with local governing agencies.

PHOTOS

Small Bay Industrial Flex Space • 1865 Canova Street Palm Bay , FL 32909



MIKE MOSS, SIOR

Principal | Industrial Team Director
321.543.2498
mike@teamlbr.com

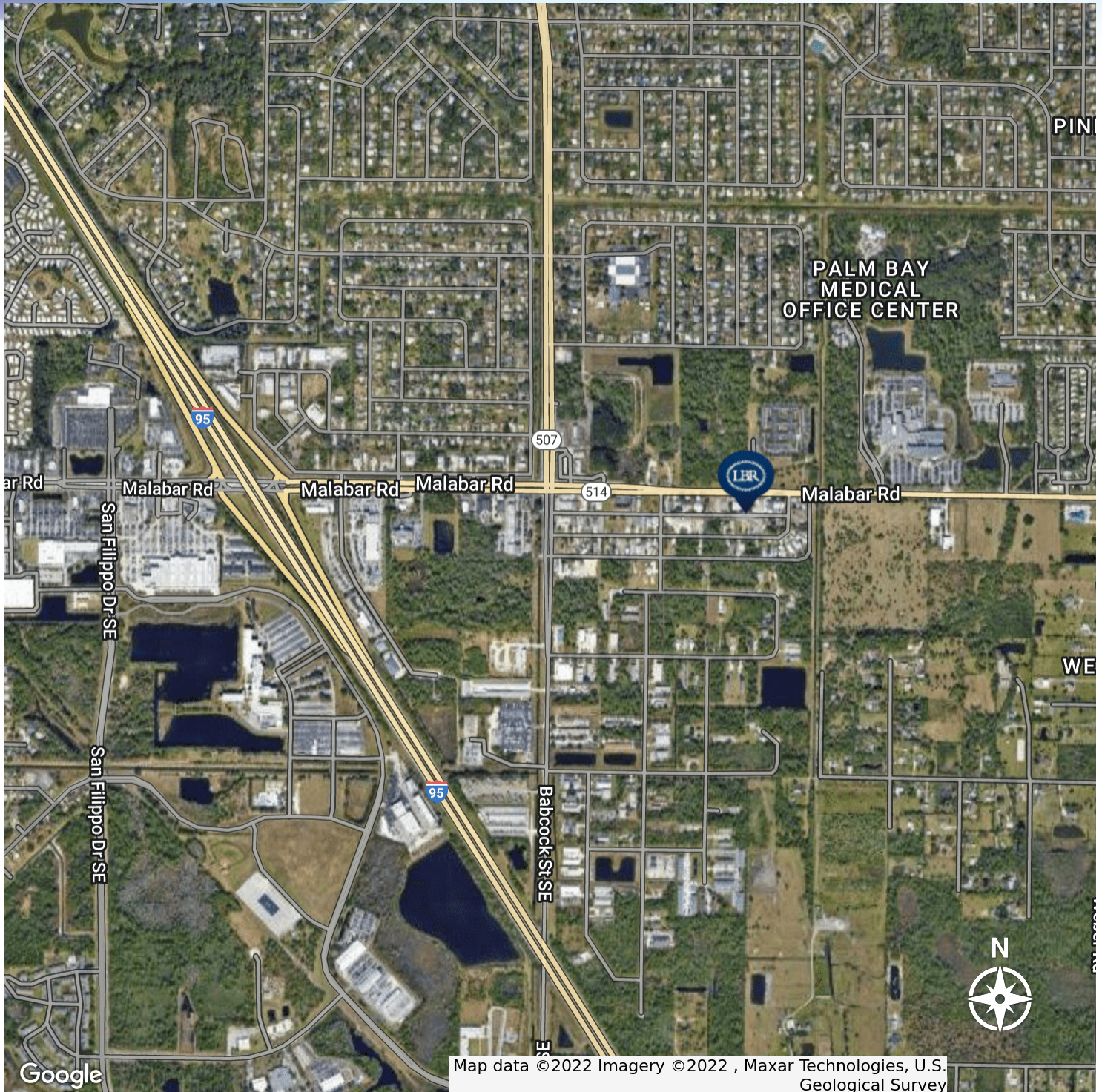
Information contained herein has been obtained through sources deemed reliable but cannot be guaranteed as to its accuracy. A purchaser or lessee is expected to verify all information to his/her own satisfaction. Zoning information subject to change and not warranted. Always confirm current requirements with local governing agencies.

Lightle Beckner Robison, Inc.

321.722.0707 • teamlbr.com
70 W. Hibiscus Blvd.,
Melbourne, FL 32901

MAP

Small Bay Industrial Flex Space • 1865 Canova Street Palm Bay , FL 32909



MIKE MOSS, SIOR

Principal | Industrial Team Director
321.543.2498
mike@teamlbr.com

Lightle Beckner Robison, Inc.

321.722.0707 • teamlbr.com
70 W. Hibiscus Blvd.,
Melbourne, FL 32901

Information contained herein has been obtained through sources deemed reliable but cannot be guaranteed as to its accuracy. A purchaser or lessee is expected to verify all information to his/her own satisfaction. Zoning information subject to change and not warranted. Always confirm current requirements with local governing agencies.